

Product datasheet for **MG210214**

Mycbpap (NM_170671) Mouse Tagged ORF Clone

Product data:

Product Type:	Expression Plasmids
Product Name:	Mycbpap (NM_170671) Mouse Tagged ORF Clone
Tag:	TurboGFP
Symbol:	Mycbpap
Synonyms:	4932408B01Rik; AMAP-1; AW125474
Mammalian Cell Selection:	Neomycin
Vector:	pCMV6-AC-GFP (PS100010)
E. coli Selection:	Ampicillin (100 ug/mL)



[View online »](#)

ORF Nucleotide Sequence:

>MG210214 representing NM_170671
 Red=Cloning site Blue=ORF Green=Tags(s)

TTTTGTAATACGACTCACTATAGGGCGGCCGGGAATTCGTCGACTGGATCCGGTACCGAGGAGATCTGCC
 GCC**CGGATCGCC**

ATGATGAAGAAGATTACTGAAAGGCAGTCCCCGCTCAAGTTGCTCGAAAAGAAGCGGGCGAAGGCACCTG
 AACAGCCCACTCCCCCATTAGGAAGAGCCTGAGCCTGTGAGCAATGTCTTACAAGGAGATGACATTCT
 TGCCCTTGCCATTAAAAAGGAAGACTTGAGGAAGCAACATGTTCCCTCAGTTTGAAGAAACAGGAGAAAAG
 CCTGTGGTACACAGAAATTTATCATCCGTAAGCTCAAACCGAAAGACTTAGCAAAAAGGGTCTACCACT
 TGGTAGCACATCCTGCTACTCCAGATGCCGCCACCAAGCCTCTGGACTACTCCGGTCTCATGACAGCTT
 CTTAAGCAGTGGCCAGATCCTCCCTCACCAGATCTTGGGAAGTCTCCAGGACTTTAAAAGAATCGCGGTT
 GCTCGAGGGAACCCAGCTGGTAAGCTGATTCACATCCAGCCCTGCCTGATGACCCTCATCTCAGCCA
 AAGAAGAGCCAAAGCCAAAGCCCCCAAGGAGGAGAGACCTTCTCCATGGGCCCCACCTCCTCAGCA
 CAACTTCTAAAGAACTGGAGACGGCACATTGCCTTGGCGAAGAAGCAACAGGAAGCTCTCAGCAAGCAC
 CTGAAGAAGCCAGCCAGTGGAGCTTTGATGCATACCGGGGAGAGCTATAGGAAGATCCAGGAGGAGCGCG
 AGGTCATTGACCGTGCATTTCCACCCAGCATGACGGAAGCAACCAAGTTGGTCTGGAGTCCACTGGA
 ATACCTGGGTGATGAGATGACAGGTCTTCTCATGACAAAAAGAAAAGTCAAGCTGGTCTGGTGGAAACC
 ATCACACACATCAGGAAGCCCTCTCCATCCAAGTGGAGACTGGATTACCAGCCAGAAGGATGCTTGGT
 ACCGCTACACCTGGGACCGGAGTCTGTTTCTGATCTACCGACGCAAGGAGCTGCAGAGTATCATGGCAGA
 GCTGGATTTACAGCAGCAGGATATTGATGGCTGGAGTGGTGGCCATGGGAAGCCCTTCTCATCTGTC
 ACAGTGAAGAACATTTGCCACCTGAAAAGATCCAGAAGAGCTCCTCGAAGACACGGTATTTCTAGACT
 CCTTGGCAACCTCTCCGACATGGTCCCATGCCTATTTCTCGGCCCTTCGCTGCTTCTGTGGGAAGCC
 AGCTTGGTGGTTCAGAGGCAGTAACCCAGAGGACAAGAAAAACATCGGAATTGGTGTCCGCTGACATTT
 GAAACCCTTGAAGGGGAGAGAAGCTCCTCAGAAGTACTGTGGTCAATAACGGCACGGTGGCCATTTGGT
 ACAACTGGCGAAGGCGGCCCCACCAGGATTTTTTCCAAGACTAAAGCAAAAAGAGCGCAGAGGTTTTTA
 CTTTAAACAACCGGAAGGTGTGATTCTGCCCGGGGAAACCAAACACTTTACCTTCTTCTCAAGTCTCTG
 AATGCTGGCATCTTCAGGAATCTTGGGAGTTGGGACCCACCCTACACTCCTGGGAGGTGCTGCTCTTC
 AGGTCACCCTCCATGCCATCTCACTGACCCAGGACATTTTTATGGATGAGAGGAAGTTGTTGGAGACAAA
 GCTGGCTGCCACGAGGCCATCACCATTGCCAGAGCGTGTGCAGGACTTACTGAGGGGATCTCCACG
 CCAGAGCGCACACCATCCCCGGTGGACGGTATCTCACCAGGAGGACTTGTCAACTACAGGAATCCTA
 GGTTCATTACCAGCATCAAGTGGTGCAAACTTGCACCAGCTGTGGCAACAGTACAGGAAGGCCAAGGC
 AACCCAGAAGGAAACCCCGCCTCAGAACTCCAGTGCCGTTACTGTTGGTGGAGAAGGCCCTCAGGTTTCG
 ATAAGCCCCAGGAACCTGGTCTCAGAGTACTCGCAGCTGTACCAGCATCAGGAGATGGACACCGCCAGGA
 AGACTCGGACTTCTTCTGTCTCTGAAGTCTAGCATAGGAAAGAAGAGTGTGGCACGGAAGAGCATTAT
 GGAGGAAGTGTGGTGGAGGAGGGTCCGGACAGGGAGACCACCCAGCGCCCTGGGCTCTGAAAAGCATT
 TCCCCGCTAAGTGAACCTGTGTCTAGAGGACTTACAGAGGCAGTGTGACCTTCCCCGAGGAGCTCC
 AGAGAGAGGATGCCCTCATCCAGCTCAATAAGGCGGCAATGGAGCTGTGTGAGGAGCAGAAGCCACTGCA
 GTCGGACCTCCTATACCAGATGTGTCTGCAGCTGTGGCGAGACGTGATTGACAGCCTGGTAAGCCAGTCC
 CTGTGGCTAAGAAATCTTCTGGGCTGCCTGAGAAGGAGACGGTTTATTTGGATCTTCCAGATGAACAAG
 GTCAAAAATCCCCCAGTACAGAGTCAAGGTGACAAGTGGGAAAGCTGGGAAGGAGGATCGGAGAGG
 GGGCGCACAGGAGAAGAAACAAGTGGTACCAAAGACAAAGATGATAAAAGGGGTTCCAAGACACCAGGG
 AAAGAGGACCGCCGAATAGCAAAAACTGAAGCCAAAAGATGACAAGAAAGTGGTAAAGTCTGCAAGCC
 GGGACAGGCTGCTCTCAGAAGATCCTCCCCCTGACAGCACGGCACCCCTCCAGGAGCCATAGACCCCTT
 GGTTCATGGAGAAATATACCAGCGGTTGCAGCTGAGGTCTATGCGTTGCTGGACAACCTGGTGACAGAT
 GTGATGGTCTGGCTGATGAGCTCAGCTCTACAAAGAATGTTGAAGAGTCTTTACGTTTTTGCAGC

AGCGGACCGACGCGTACGCGGCCGCTCGAG - GFP Tag - GTTTAA

Protein Sequence: >MG210214 representing NM_170671
 Red=Cloning site Green=Tags(s)

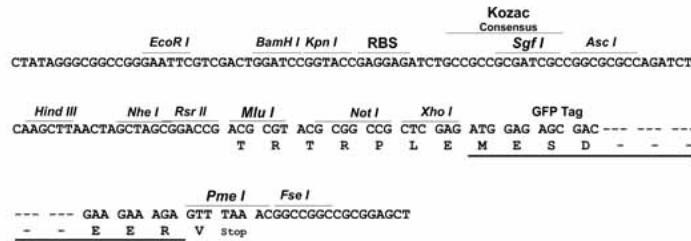
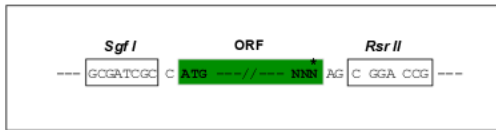
MMKKITERQSPLKLEKKRAKAPQPTPIQEPEPVS NVLQGDDILALAIKKEDLRKQHPVQFEETGEK
 PVVTQKFIIIRKLPKDSSKR VYHLVAHPATPDAATKPLDYSGPHDSFLSSGQILPHQILGSLQDFKRIAV
 ARGNTQLAKLIHIQPCLMTLISAKEEPKPKPKEEERPSWAPPPQHNF LKNWRRHIALRKKQQEALSKH
 LKKPASELLMHTGESYRKIQEEREVIDRALPTQHDGKATSWFWSPLEYLGDEMTGLLMTKKKTQRGLVEP
 ITHIRKPLSIQVETGLPAQKDAWYRYTWDRSLFLIYRRKELQSIMAE LDFSQQDIDGLEVVGHGKPFSSV
 TVEEHLPEKIQKSSSEDTVFLDSLNLSDMVPMPILGPSLLFCGKPACWVRGSPEDKKNIGIGVRLTF
 ETLEGERTSSELTVVNGTVAIWYNWRRRPHQDFQDLKQNKTRQFYFNNREGVILPGETKHFTFFFKSL
 NAGIFRESWEFGHTPTLLGGAVLQVTLHAISLTQDIFMDERKLL ETKLAHEAITIAQSVLQDLLRGIST
 PERTPSPVDAYL TEEDLFNRYNPR LHYQHVVQNLHQLWQYRKAKATQKETPSLRTPVPLLLVEKASGS
 ISPRNLVSEYSQLSPHQEMDTARKTRDFFLSLKSSIGKKS VARKSIMEELLVEEGPDRETTQRPWALKSI
 SPPKWNLCLEDFRQAVMTFPEELQREDALIQLNKAAMELCQE QKPLQSDLLYQMCLQLWRVDVIDSLVSQS
 LWLRNLLGLPEKETVYLDLPDEQGQKSPPVTESKVTSGKAGKEDRRGGAQEKKQLGTDKDKDKRGSKTPG
 KEDRPNSKKLKPDKDKKVVKSASRDRLLEDPPDSTAPSQEPIDPLVMEKYTQRLHA EYVALLDNLVTD
 VMVLADELSSTKNVEESLRFCS

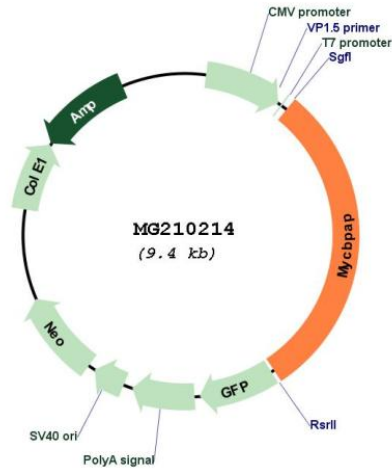
SGPTRRRLE - GFP Tag - V

Restriction Sites: SgfI-RsrII

Cloning Scheme:

Cloning sites used for ORF Shuttling:



Plasmid Map:


ACCN: NM_170671

ORF Size: 2796 bp

OTI Disclaimer: The molecular sequence of this clone aligns with the gene accession number as a point of reference only. However, individual transcript sequences of the same gene can differ through naturally occurring variations (e.g. polymorphisms), each with its own valid existence. This clone is substantially in agreement with the reference, but a complete review of all prevailing variants is recommended prior to use. [More info](#)

OTI Annotation: This clone was engineered to express the complete ORF with an expression tag. Expression varies depending on the nature of the gene.

Components: The ORF clone is ion-exchange column purified and shipped in a 2D barcoded Matrix tube containing 10ug of transfection-ready, dried plasmid DNA (reconstitute with 100 ul of water).

Reconstitution Method:

1. Centrifuge at 5,000xg for 5min.
2. Carefully open the tube and add 100ul of sterile water to dissolve the DNA.
3. Close the tube and incubate for 10 minutes at room temperature.
4. Briefly vortex the tube and then do a quick spin (less than 5000xg) to concentrate the liquid at the bottom.
5. Store the suspended plasmid at -20°C. The DNA is stable for at least one year from date of shipping when stored at -20°C.

RefSeq: [NM_170671.2](#), [NP_733771.2](#)

RefSeq Size: 2944 bp

RefSeq ORF: 2799 bp

Locus ID: 104601

UniProt ID: [Q5SUV2](#)

Cytogenetics: 11 D

Gene Summary: May play a role in spermatogenesis. May be involved in synaptic processes (By similarity).
[UniProtKB/Swiss-Prot Function]