

## Product datasheet for **MG210211**

### Ankrd6 (NM\_001012450) Mouse Tagged ORF Clone

#### Product data:

Product Type:	Expression Plasmids
Product Name:	Ankrd6 (NM_001012450) Mouse Tagged ORF Clone
Tag:	TurboGFP
Symbol:	Ankrd6
Synonyms:	di
Mammalian Cell Selection:	Neomycin
Vector:	pCMV6-AC-GFP (PS100010)
E. coli Selection:	Ampicillin (100 ug/mL)



[View online »](#)

ORF Nucleotide  
Sequence:

>MG210211 representing NM\_001012450  
Red=Cloning site Blue=ORF Green=Tags(s)

TTTTGTAATACGACTCACTATAGGGCGGCCGGGAATTCGTCGACTGGATCCGGTACCGAGGAGATCTGCC  
GCC**CGGATCGCC**

ATGAGCCAGCAGGATGCGGTGCTGCGCTTTCAGAACGCCTGCTCATAGCTGCGTACAAAGGCCAAACAG  
AGAATGTGGTTCAGCTCATCAACAAGGGTGCCAAGGTAGCCGTTACCAAGCATGGCCGGACCCCTTGCA  
CCTCGCTGCCAATAAGGGTCATCTTTCTGTGGTGCAGATTTTGCTGAAGGCTGGCTGTGACCTCGATGTG  
CAAGATGATGGGGACCAGACAGCCTTGACCCGGGCCACTGTGGTGGGAAACACCGAGATCCTCACAGCGC  
TTATCCGGGAGGGGTGTGCCCTGGACAGACAGGACAAGGATGGGAATACAGCCCTGCATGAAGCCGCTG  
GCACGGATTAGCCAGTCAGCCAAGCTGCTCGTTAAAGCCGGAGCCAATGTGCTTCCAGAAACAAGGCA  
GGGAACACAGCTCTGCACCTGGCCTGCCAGAATAGTCACTCCAGAGCACTCGCATCCTCCTGCTGGGCG  
GCTCCCGGGTGCCTCAAAAACAACGCAGGGGACACCTGTCTGCACGTGGCTGCGCGGTATAACCACTT  
GTCCGTGCTCAGACTCCTCCTCAATGCTTCTGCTCTGTCCATGAAAAGAACCAGGCTGGAGACACGGCC  
CTCCATGTGGCTGCTGCCCTAAATCACAGAAGGTAGTTAAAGTCTGCTGGAAGCTGGTGTGACACAA  
CCATTGTGAACAATGCAGGCCAGACCCCGCTGGAGACTGCCCGCTACCACAATAATCCTGAAGTCCGACT  
ACTCCTCACCAAGGCTCCCCAGATCTTGCGCTTCAGTCTGGGCGAAGCCTGAGGAAAAGGAGAGAGAGG  
CTCAAGGAAGAGAGGAGGGCCAGTCTGTGCCCGAGATGAGGTGGCACAGAGCAAGGGAAGTGTCTCAG  
CAGGAGATACCCCGAGCAGTGAACAAGCAGTACCCAAAAAGAGGAAGCTAGAAGAGATTGTCCACCAGC  
TTCCAGGAGCCAAGAAAGGATGAGAGGAGGAGAAAGTCGAGGCCAGAGGTGTACGCGTTATCTGACCC  
ACCCAGCCGAGACCAACAGCCTGGACACCAAAAAGAACCTGCACAGTCATCACACCCCAAAAAGAAGA  
GCAGACATCGGTGTTGGTCCACCTCCACCCACGGGTTACAGGGCGTACCAGCTATACACGCTGTACCG  
GGGCGAGGATGGAAAAGTATGCAGGCACCAATAAAAGGTTGTCGCTGTGAACCTCTAATCAACAAGCTG  
GAGAACCAGTTGGAGGCGACTGTGGAGGAAATCAGAGCTGAGTTAGGCTCGGTGCAGGATAAAGTGAACG  
CGAAGCTGGGCCAGATGGAGAGCAAAACCCAGCACCAATGTGCGTTTTGGACAACTGATGGTGGAAACG  
GCTGTCCGCGGAGAGAACAGAATGCATGAATCGCCTGCAACAGCATGCAGCTGCTGAGAAGCAGGAGGGA  
GAGAAACGTCAGATGTCTTTGGTAGATGAACTAAAAGCCTGGTGCATGTTGAAGATCCAGAGTCTGGAGC  
TAAGACTCTCTGGAGAGTCTCGGACCTCAGAGCTAAATCCACACCACCTCCGTCTGACTCCACTCCAGC  
TGTAGACCAACCAGTGGTAGCTGCAGGGCCAGGAGCAGCTCCGACAGCTCCTCTCAGGTTGTGAGGCC  
AAGGATAAAGGCGCTCAATGCCTCGCTGCCACAGCCACCAGCAGGAGCTGCCTCCTCTGACTGTACAG  
GGTCTGGGTTAAGGAAGATCAAGGCCCGGGTGTCTCCAGGTGTGATCAGCAGACTGGATCCTGTGTCAA  
CCGAGGCACTCAGACCAAGAAGTCTGGGAGAAGTGGGCAGACCAAGCATCGAGGCCAGCAGCCCACTGCC  
AGCAGCCCAAGTGGGCAGCAGCCATCAGCAGCAAGCAGTGTGCGGAGACGCCTCACAAGCCCTGGAGC  
TAACTCAGTATTTTTTGGAGCCGTTTCTGCACAGATGGAAAAGTGGTATGAACGGAAAATTGAAGAAGC  
ACGGAGCCAAGCAAGTCAGAAAGCTCAGCAGGATGAGGCCACATTGAAGGAACACATCAGAAGTCTGGAG  
GAGGAGCTTGCCAGGCTGCGGACAAAGGTGCAGAAG

**ACGCGT**ACGCGGCCGCTCGAG - GFP Tag - GTTTAA

**Protein Sequence:** >MG210211 representing NM\_001012450  
 Red=Cloning site Green=Tags(s)

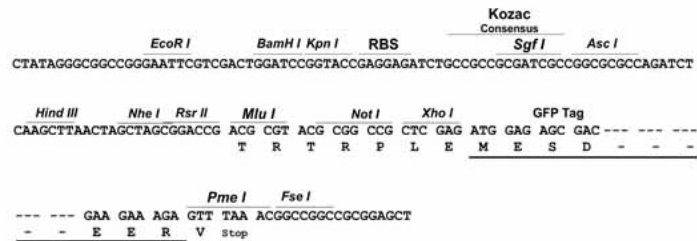
```
MSQQDAVAALSERLLIAAYKGQTENVVQLINKGAKVAVTKHGRTPLHLAANKGHL SVVQILLKAGCDLDV
QDDGDQ TALHRATVVGNT EIL TAL IREGCALDRQDKGNTALHEAAWHGFSQSAKLLVKAGANVLARNKA
GNTALHLACQNSHSQSTRILL LGGSRADLKNAGDTCLHVAARYNHL SVVRLLLNAFCVHEKNQAGDTA
LHVAAALNHKKVVKVLL EAGADTTIVNAGQTPLETARYHNNPEVALLLTKAPQILRFSRGRSLRKRER
LKEERRAQSVPRDEVAQSKGSVSAGDTPSEQAVPQKEEARRDPCPPASQEPKDERRRKSRPEVSALSDP
TPAADQQPGHQKNLHSHHPK KSRHRCWSPPPHGFRA YQLYTLYRGEDGKVMQAPIKGCRCPEPLINKL
ENQLEATVEEIRAELGSVQDKVNAKLGQMESKTQHQM CVL DKL MVERLSAERTECMNRLQQHAAAEKQEG
EKRQMSLVDELKAWCMLKIQSLELR LSGESRTFRAKSTPPPSDSTPAVDQPVVAAGPGAASDSSSQVVRP
KDKALNASAAHSHQQLPPSDCTGSLR KIKAPGASRCDQQTGSCVNRGTQTKKSGRSGQTKHRGQQPTA
SSPSGQQPSAASDVRDASQALEL TQYFFEAVSAQMEK WYERKIEEARSQASQKAQQDEATLKEHIRSLE
EELARLR TKVQK
```

TRTRPLE - GFP Tag - V

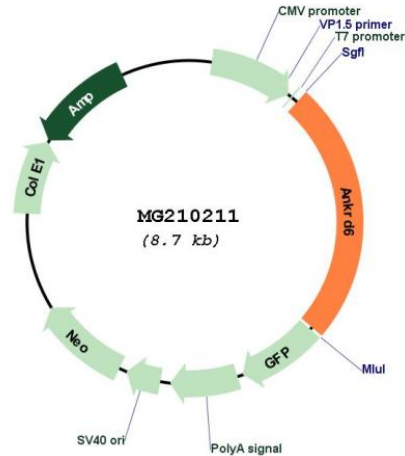
**Restriction Sites:** SgfI-MluI

**Cloning Scheme:**

Cloning sites used for ORF Shutting:



## Plasmid Map:



ACCN: NM\_001012450

ORF Size: 2139 bp

**OTI Disclaimer:** The molecular sequence of this clone aligns with the gene accession number as a point of reference only. However, individual transcript sequences of the same gene can differ through naturally occurring variations (e.g. polymorphisms), each with its own valid existence. This clone is substantially in agreement with the reference, but a complete review of all prevailing variants is recommended prior to use. [More info](#)

**OTI Annotation:** This clone was engineered to express the complete ORF with an expression tag. Expression varies depending on the nature of the gene.

**Components:** The ORF clone is ion-exchange column purified and shipped in a 2D barcoded Matrix tube containing 10ug of transfection-ready, dried plasmid DNA (reconstitute with 100 ul of water).

**Reconstitution Method:**

1. Centrifuge at 5,000xg for 5min.
2. Carefully open the tube and add 100ul of sterile water to dissolve the DNA.
3. Close the tube and incubate for 10 minutes at room temperature.
4. Briefly vortex the tube and then do a quick spin (less than 5000xg) to concentrate the liquid at the bottom.
5. Store the suspended plasmid at -20°C. The DNA is stable for at least one year from date of shipping when stored at -20°C.

RefSeq: [NM\\_001012450.1](#)

RefSeq Size: 4733 bp

RefSeq ORF: 2139 bp

Locus ID: 140577

UniProt ID: [Q69ZU8](#)

Cytogenetics: 4 A5

**Gene Summary:** This gene encodes a protein which is thought to be involved in the Wnt signaling pathway and embryonic axis formation. Similar genes have been found in human, rhesus macaque, and zebrafish. Three transcript variants encoding the same protein have been found for this gene. [provided by RefSeq, Jul 2008]