

## Product datasheet for **MG210209**

### **PPP1R37 (NM\_199149) Mouse Tagged ORF Clone**

#### **Product data:**

Product Type:	Expression Plasmids
Product Name:	PPP1R37 (NM_199149) Mouse Tagged ORF Clone
Tag:	TurboGFP
Symbol:	PPP1R37
Synonyms:	Gm158; Lrrc68
Mammalian Cell Selection:	Neomycin
Vector:	pCMV6-AC-GFP (PS100010)
E. coli Selection:	Ampicillin (100 ug/mL)



[View online »](#)

ORF Nucleotide  
Sequence:

>MG210209 representing NM\_199149  
 Red=Cloning site Blue=ORF Green=Tags(s)

TTTTGTAATACGACTCACTATAGGGCGGCCGGGAATTCGTCGACTGGATCCGGTACCGAGGAGATCTGCC  
 GCCGCGATCGCC

ATGGAGATCCCGCCGAGGAGGCTCCGCCCGGCCGGCGCGGACGCCGACGCGGACGCGGAGGCCGAGA  
 CCGAGGAGGCCTCCGCCAAGCTGAGTCTCTACCGGGACCTCGCCCCGGCCGATGGCCGCCTTAAGGC  
 TGCTGCCAAGCGTGTACGTTCCCATCTGACGAGGACATCGTGTCTGGAGCGGTGGAGCCAAAGACCCC  
 TGGAGACACGCCAGAATGTGACGGTGGACGAGGTGATCAGTGCCTACAGACAGGCCTGCCAGAAGCTGA  
 ACTGCCGACAAAATCCCAAGCTCCTCAGGCAGCTGCAGGAGTTCACGGATCTTGAGCAACGCATCAACTG  
 CCTGGACCTGAAAGGGGAGAAGCTTGATTATAAGACCTGTGAGGCTCTGGAGGAGGTCTTTAAGAGGCTG  
 CAGTTCAAGGTTGTGGACCTGGAGCAAACCACTTAGATGAGGATGGTGCCTCAGCCCTCTTTGACATGA  
 TTGAGTACTACGAGTCGGCCACCCACTCAACATCTCTTTCAACAAGCACATCGGCACTCGGGGCTGGCA  
 GGCTGCTGCCACATGATGCGCAAGACAAGTTGCCTACAGTACCTAGATGCCCGCAACACACCCCTGCTG  
 GACCACTCGGCACCCCTTTGTGGCTCGCGCCCTGCGCATCCGCAGCAGCCTGGCAGTGTGCACCTAGAAA  
 ATGCCAGCCTGTCCGGGCGGCCCTCATGCTGCTGGCCACAGCCCTGAAGATGAACATGAACCTCCGAGA  
 ACTGTACTTGGCAGACAACAAGCTCAACGGTCTGCAGGACTCTGCCAGCTGGGCAACTTGTCAAATTC  
 AACTGCTCCCTGCAAAATCTGGACCTGCGGAACAACCAGTGTGGACTCAGGTCTGGCCTACATCTGCG  
 AGGGTCTCAAGGAGCAGAGGAAAGGGCTGGTGACCCTGGTGTGTGGAACAACCAGCTCACACACACGGG  
 CATGGCCTTCTTGGGCATGGCACTGCCACACACAGAGTCTGGAGACTGAACCTGGGCCACAACCCC  
 ATTTGGAAACGAGGGTGTACGAAACCTCAAGAATGGGCTCATCAGCAACCCAGTGTGCTGCGCCTCGGCC  
 TCGCCTCAACCAAGCTCACGTGCGAGGGCGGGTGGCCGTGGCAGAGTTCATCGCCGAGAGCCCCCGCT  
 CCTGAGACTGGACCTCCGGGAAAACGAGATCAAGACAGGCGGGCTCATGGCGCTGTCTTTGGCCCTCAAG  
 GTGAACCACTCCCTGCTTCGATTGGACCTGGACCGAGAGCCCAAGAAAGGCCGGTGAAGAGCTTCATCG  
 AGACGCAAGGCACTACTGGCTGAGATCCAGAACGGCTGCAAGCGCAACTTTGTGCTGGTTCGAGAGCG  
 TGAGGAGAAGCAGCAGCTGCAGCTGTCAGCCTCCATGCCTGAGATCACCATCACTGCACCGCAGCCCTG  
 GAAGAGTCTGGGAGCTGCCAGCCGTGGGTCTCAGAATGGGGCCCTCGCCCTGGACCTGGCCCTGACT  
 CAGACTCAGACTCAGACTCTGACAGGGAGGAGCAGGAGGAAGAGGAGGAGGACCAACGAAACCAGCAGAG  
 GGATGAGGGGGGCAACGACCAGAGCTCCTTGGCCTCCTGCCCTGCCCTCATACCTCCACAGACTCCCTA  
 GGCCTTGGTGACAAGAGCCCCCAAGCAGCCCTCCTCTCCCACTGAGCAGCGTATTTCTGTCTCCAGCC  
 CAGGCCGAGGCCACAAGGTATTTGTGGTACCCGGGTGGAGAGTCCACCTGAGAGGCCAGAGCCCCCTGT  
 TCCTCCACCTTTGTCTCCTCTCCTCCACCTCTCCTCCCTCCCCGCTGCCTCTCCACCATCTCAGACC  
 ATGGACACCCAGGACCCAGAGTCATCTGAGGCTCAGCCCCAGCTGGAGCCATCTCAGGCAGGGCAGCCAC  
 TGCCCAATGGCCTGAAGCCTGAGTTTGGCCTCGCACTTCCCCAGAGCCTCCCCAGGGCTGGAGGCTAA  
 GGGAGGCAGTGCAGCCTGGAGCACGCACTGCACCGCTCCAGGGTGTAGCAAGCTGGAGGAAGTCTT  
 CTAGAGGCCAGTCAGGAGGCCCGGGACACTG

ACGCGTACGCGGCCGCTCGAG - GFP Tag - GTTTAA

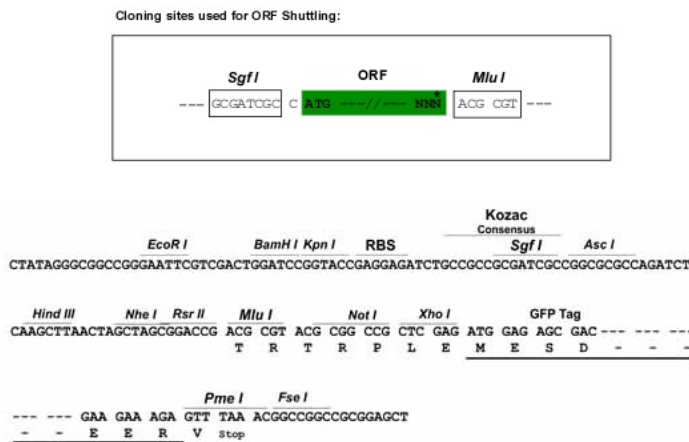
**Protein Sequence:** >MG210209 representing NM\_199149  
 Red=Cloning site Green=Tags(s)

```
MEIPPQEAPPGGADADADAEAEETEEASAEASPTGTSPADGRLKAAAKRVTFPSDEDIVSGAVEPKDP
WRHAQNVTVDEVISAYRQACQKLNCRQIPKLLRQLQEF TDLEQRINCLDLKGEKLDYKTCEALEEVFKRL
QFKVVDLEQTNLDEDGASALFDMIEYYSATHLNI SFNKHIGTRGWQAAAHHMRKTSCLQYLDARNTPLL
DHSAPFVARALRIRSSLAVLHLENASLSGRPLMLLATALKMMNMLRELYLADNKLNGLQDSAQLGNLLKF
NCSLQILDRLNNHYLDSLGLAYICEGLKEQRKGLVTLVLWNNQLTHTGMAFLGMALPHTQSLETNLGHNP
IGNEGVRNLKNGLISNRSVLRRLGLASTKLTCEGAVAVAEFIAESPRLLRLDLRENEIKTGGLMALSLALK
VNHSLRLDLDRPKKEPVKSF IETQKALLAEIQNGCKRNFVLVREEEKQQLQLSASMPEITITAPQPL
EESGELPAVGSQNGAPRPGPGPDS DSDSDSDREEQE EEEEEQQRNQ RDEGGNDQSSLASCPALIPSTD SL
GPGDKSPSPSSPTEQRISVSSPGRGHKVFVTRVESPPERPEPPVPTFVSSPPSPSPSPASPPSQT
MDTQDPESSEAPQLEPSQAGQPLPNGLKPEFALALPPEPPPGL EAKGGSCSLEHALHRSQGVSKLEELL
LEASQEA PRDTL
```

TRTRPLE - GFP Tag - V

**Restriction Sites:** SgfI-MluI

**Cloning Scheme:**



**ACCN:** NM\_199149

**ORF Size:** 2136 bp

**OTI Disclaimer:** The molecular sequence of this clone aligns with the gene accession number as a point of reference only. However, individual transcript sequences of the same gene can differ through naturally occurring variations (e.g. polymorphisms), each with its own valid existence. This clone is substantially in agreement with the reference, but a complete review of all prevailing variants is recommended prior to use. [More info](#)

**OTI Annotation:** This clone was engineered to express the complete ORF with an expression tag. Expression varies depending on the nature of the gene.

**Components:** The ORF clone is ion-exchange column purified and shipped in a 2D barcoded Matrix tube containing 10ug of transfection-ready, dried plasmid DNA (reconstitute with 100 ul of water).

**Reconstitution Method:**

1. Centrifuge at 5,000xg for 5min.
2. Carefully open the tube and add 100ul of sterile water to dissolve the DNA.
3. Close the tube and incubate for 10 minutes at room temperature.
4. Briefly vortex the tube and then do a quick spin (less than 5000xg) to concentrate the liquid at the bottom.
5. Store the suspended plasmid at -20°C. The DNA is stable for at least one year from date of shipping when stored at -20°C.

**RefSeq:** [NM\\_199149.3](#), [NP\\_954600.1](#)

**RefSeq Size:** 2971 bp

**RefSeq ORF:** 2139 bp

**Locus ID:** 232947

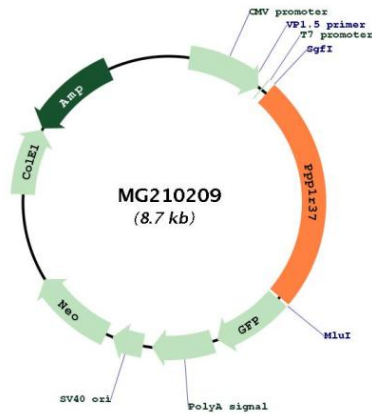
**UniProt ID:** [Q8BKR5](#)

**Cytogenetics:** 7 A3

**MW:** 77.6 kDa

**Gene Summary:** Inhibits phosphatase activity of protein phosphatase 1 (PP1) complexes.[UniProtKB/Swiss-Prot Function]

**Product images:**



Circular map for MG210209