

Product datasheet for **MG210206**

Aggf1 (NM_025630) Mouse Tagged ORF Clone

Product data:

Product Type:	Expression Plasmids
Product Name:	Aggf1 (NM_025630) Mouse Tagged ORF Clone
Tag:	TurboGFP
Symbol:	Aggf1
Synonyms:	2010009L17Rik; 2310029P06Rik; AW112072; Peg3; VG5Q
Mammalian Cell Selection:	Neomycin
Vector:	pCMV6-AC-GFP (PS100010)
E. coli Selection:	Ampicillin (100 ug/mL)



[View online »](#)

ORF Nucleotide Sequence:

>MG210206 representing NM_025630
 Red=Cloning site Blue=ORF Green=Tags(s)

TTTTGTAATACGACTCACTATAGGGCGGCCGGGAATTCGTCGACTGGATCCGGTACCGAGGAGATCTGCC
 GCC**CGCATCGCC**

ATGGCCTCCGAGGCGCCCTCGCCGCTTCTCCGCGCCGCCCGCTCTCCGAGCCGGAGCTGG
 CGCAGCTCAGGCCGAAGGTGGAGAAGTTGGAGCGCGAGCTGCGGAGCTGCCGGAGGCAGGTGCGGGAGGT
 GGAGAAGCTGCTGCAGCACACGGAGCGACTCTACCCAACCGCGAGAGCGACAACCAGGAGCTCCGCACG
 CAGGTAGAAGAACTTAGTAAAATACTCCATTGTGGGAAAAATGAAGATAATCCGAAGTCTGATGTAGAAG
 TACAGACAGAGAGCCAAGCTCCTGGGCGATTTAGATTACTATCAGACATGTTATAATGACGACAG
 TCTTCCCAGTAAAGAGACGGAGCTGTGTGTACAGCAGAGTCAGTGTGCTCAGGCTTCCGCTCTTGATCCT
 CAGGACGAGTCACACATAGACAGCGGGAGTTATGCTGGTGTGATGCCACAGAAGGTGTTAGCCATAGAC
 AGGAGGACGCCGTACCTCTGACTCACAGGAGAGTGTGTCGCGCTAGCAGAAGGCCAGCACTCGAAGG
 GTCTCGCTTGTGAGAGCTTGTGAGCTGCAGCGGAGGCTGCTGTGTCGAGACCGGCTTACCTACGAC
 GAGAGCACGGGCTTATATTTGACCACAGCACTGGTTTCTATTATGATTCTGAAAACCAGCTGTATTATG
 ACCCTTCCACGGGATTTATTACTACTGCGATGTGGAGAGTGGTCGGTACCAGTTTCACTCTCGCGTAGA
 CCTGCAGCCTTACCAGACCTCTAGCACAAAACCAACAGAGAAAGAAGACTGAAGAAGAGAAGAAAGGAG
 CCAGGTTTTTATACAGCAATGAAGAAAAGGATTTGAGCTCAGAAGATCAGAAAGTCTGCAGTGTAGAAT
 ATATAAAGTGCAGTGAGGATGAACATTTGAAATGTGAAAAAGAAGGCCAGAACAGACACTTCTCACAA
 AAGCAGTCCCTTACAGCTCACGGTGGCAGTTAGTGGAGACTGTGGAGTCTCCTGGAGATGATAACTCA
 GCGTCATCTAAGGATGAGAGAATCGGAGAGAGTGTGAGCGAGCCGGAAGAAGGTGAGATCACAGACTCTC
 AGAGTGAGAAGAGCTATGATGGAGACAGTGTGAGTGGGACAGGGAGACCTCAGAAGAATCCGAGATGA
 AGATGAGGAAAGAATTTGGCCGCCCTGTATTCGGGTGATTGTCTTAGGTCTCCAGTGTTCAGATGGGC
 TCGCTGTTTCATCATCACCGCTGTGAGCCAGCCACCATTGGGAGAGAGAAGGACATGGAGCATACTGTGA
 GAATCCCTGAAGTCGCTGTTAGTAAGTTCACGCAGAAGTTTACTTCGACCATGACTTGCAAAGCTACGT
 TCTTGTGGATCAGGGCAGCCAGAATGGTACCATTGTCAACGGGAAACAGATTCTTCAGCCAAAACTAAA
 TGTGATCCTTACGTCCTCGAACACGGCGACGAAGTAAAATTGGGGAGACTGTGCTGCTTTTACATTC
 ACCCTGGCAGTGAGACGTGCGATGGCTGTGAGCCGGGCGAGTCCAGAGCTCACCTCCGCTCGATAGAAA
 GGACGAGCCTCTGGTCGGTCCAGCACTAAGTAAGGAGGAAAAAGAGTTGGAAGAAGAAAAGCACTCAAG
 AAAATACGAGTAAAGTATGGCTTGCAGAATACAGATTATGAAGCTGAAAAAGCGTTGAAGAATCCTAAGT
 ATAAAGACAGAGCTGAAAACGCAGGGAGCAGGTGGGAAGCGAAGGGACTTTCAAAAGAGATGACGCCCC
 TGGCTCTGTTCACTCTGAAATTACAGATAGCAACAAAGGCCGAAAGATGTTGGAGAAGATGGGGTGGAAA
 CGGGGAGAAGGCCTGGGAAAGGACGGTGGAGGGATGAAAACGCCGATCCAGCTTCAGCTTCGACGGACAC
 ATGCTGGCTTGGGGACAGGGAAGCTGTCTCGATTGATGACGTTACCTCATCCAGAATAAGAGCAAAAA
 ACACTGGGACAAAGCCGGGAGCGGTTTTCGGAAACTTTCACAGAAAACAAACCTCGGAAAGAGACCCCA
 GGGCAGTGCCGTGGGTGACAGGACTGCAGAG

ACGCGTACGCGGCCGCTCGAG - GFP Tag - GTTTAA

Protein Sequence: >MG210206 representing NM_025630
 Red=Cloning site Green=Tags(s)

MASEAPSPSPSPPPASPEPELAQLRRKVEKLERELRSCRQVREVEKLLQHTERLYRNAESDNQELRT
 QVEELSKILHCGKNEDNPKSDVEVQTESQAPWAI SDYYYQTCYNDDSLPSKETELCVQSQCAQASALDP
 QDESHIDSGSYAGADATEGVSHRQEDAVTSDSQESVSALAEGPALEGSSLAESLRAAAEA AVSQTGF TYD
 ESTGLYFDHSTGFYYDSENQLYDPSTGIYYYCDVSEGRYQFHSRVDLQPYQTSSTKPNRERRLKKRRKE
 PGFYTANEEKDLSSDQKVCVSEYINCSEDEHSGNVKKA RTDTS HKSSPLQLTVAVSGD TVESPGDDNS
 ASSKDERIGESESEPEEGEITDSQSEKSYDGDSSSGDRETSEESDDEDEERIWPPCIRVIVIRSPVLQMG
 SLFIITAVSPATIGREKMEHTVRIPEVAVSKFHAEVYFDHDLQSYVLDVQGSQNGTIVNGKQILQPKTK
 CDPYVLEHGDV KIGETVL SFHIHPGSETCDGCEPGQVRAHLRLDRKDEPLVGPALSKEEKELERRKALK
 KIRVKYGLQNTDYEA EKALKNPKYKDRAGKRREQV GSEGT FQRDDAPASVHSEITDSNKGKRMLEKMGWK
 RGEGLGKGGGMKTP IQLQLRRTHAGLGTGLSSIDDVHLIQNKSKKHWDKARERFAETFTENKPRKETP
 GAVPWVTGTAE

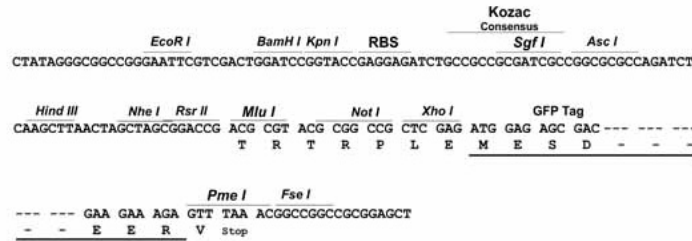
TRTRPLE - GFP Tag - V

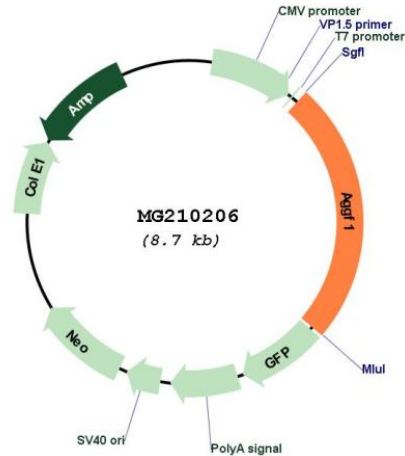
Restriction Sites:

SgfI-MluI

Cloning Scheme:

Cloning sites used for ORF Shutting:



Plasmid Map:


ACCN: NM_025630

ORF Size: 2133 bp

OTI Disclaimer: The molecular sequence of this clone aligns with the gene accession number as a point of reference only. However, individual transcript sequences of the same gene can differ through naturally occurring variations (e.g. polymorphisms), each with its own valid existence. This clone is substantially in agreement with the reference, but a complete review of all prevailing variants is recommended prior to use. [More info](#)

OTI Annotation: This clone was engineered to express the complete ORF with an expression tag. Expression varies depending on the nature of the gene.

Components: The ORF clone is ion-exchange column purified and shipped in a 2D barcoded Matrix tube containing 10ug of transfection-ready, dried plasmid DNA (reconstitute with 100 ul of water).

Reconstitution Method:

1. Centrifuge at 5,000xg for 5min.
2. Carefully open the tube and add 100ul of sterile water to dissolve the DNA.
3. Close the tube and incubate for 10 minutes at room temperature.
4. Briefly vortex the tube and then do a quick spin (less than 5000xg) to concentrate the liquid at the bottom.
5. Store the suspended plasmid at -20°C. The DNA is stable for at least one year from date of shipping when stored at -20°C.

RefSeq: [NM_025630.3](#)

RefSeq Size: 3213 bp

RefSeq ORF: 2136 bp

Locus ID: 66549

UniProt ID: [Q7TN31](#)

Cytogenetics: 13 D1

Gene Summary: Promotes angiogenesis and the proliferation of endothelial cells. Able to bind to endothelial cells and promote cell proliferation, suggesting that it may act in an autocrine fashion (By similarity).[UniProtKB/Swiss-Prot Function]