

Product datasheet for **MG210205**

Ssrp1 (BC042502) Mouse Tagged ORF Clone

Product data:

Product Type:	Expression Plasmids
Product Name:	Ssrp1 (BC042502) Mouse Tagged ORF Clone
Tag:	TurboGFP
Symbol:	Ssrp1
Synonyms:	C81323; Hmg1-rs1; Hmgi-rs3; Hmgox; T160
Mammalian Cell Selection:	Neomycin
Vector:	pCMV6-AC-GFP (PS100010)
E. coli Selection:	Ampicillin (100 ug/mL)



[View online »](#)

ORF Nucleotide
Sequence:

>MG210205 representing BC042502
Red=Cloning site Blue=ORF Green=Tags(s)

TTTTGTAATACGACTCACTATAGGGCGGCCGGAATTCGTCGACTGGATCCGGTACCGAGGAGATCTGCC
GCCGCGATCGCC

ATGGCAGAGACATTGGAGTTCAACGACATCTTCCAGGAGGTGAAAGGGTCCATGAATGATGGGAGGCTTC
GATTGAGCCGTCAGGGTATCATCTTTAAGAACAGCAAGACGGGCAAAGTGACAACATCCAGGCTGGGGA
GTTGACAGAAGGCATCTGGCGTCGGGTAGCATTAGGCCATGGGCTTAAACTGCTCACAAAAGAAATGGGCAT
GTCTACAAGTACGATGGCTTCCGCGAATCGGAGTTTGAGAACTCTGACTTCTTCAAACTCACTATC
GCCTTGAGCTAATGGAGAAGGATCTGTGTGTAAGGGCTGGAAGTGGGGACAGTGAAGTTTGGAGGACA
GCTGCTTTCTTTGACATTGGTGATCAACCAGTCTTTGAGATACCCCTAAGCAATGTGTCCAGTGTACC
ACAGGCAAGAATGAGGTGACCCTGGAATCCACCAGAATGACGATGCTGAAGTATCTCTCATGGAGGTGC
GCTTCTATGTTTCTCCACGCAGGAAGATGGTGTGGACCTGTGGAGGCTTTGCCAGAATGTTCTGTC
AAAGGCAGATGTGATCCAGGCCACGGAGACGCCATCTGCATCTCCGGGAGCTGCAGTGTGACTCCT
CGCGGTGATACGATATCCGGATCTACCCTACCTTCTACACCTGCATGGCAAGACCTTTGACTACAAGA
TCCCTATACTACAGTTCTCCGTCTTCTCTGCTACCACACAAGGATCAGAGACAGATGTTCTTTGTGAT
CAGCTTGATCCTCCATCAAGCAGGGCCAAACTCGTTACCATTCTCTGATCCTCCTCTTCTCAAGGAT
GAGGACATCTCCTTGACTCTCAACATGAATGAGGAAGAAGTAGAAAAGCGCTTTGAGGGGCGACTCACCA
AGAACATGTCAGGATCCCTCTATGAAATGGTCAGTCGGGTGATGAAAGCACTTGTCAACCGTAAATCAC
AGTCCCAGGCAACTTCCAAGGGCACTCAGGGGCCAGTGTATTACCTGCTCCTATAAGGCCAGCTCAGGA
TCCTGTACCCACTGGAGCGGGCTTCACTACGTGCATAAGCCCCTGTGCACATCCGCTTTGATGAGA
TCTCTTTGTCAACTTTGCCCGTGGCACCACGACCACTCGTTCCTTCGACTTTGAGATTGAGACCAAGCA
AGGCACCTCAGTATACCTTCAGCAGCATTGAAAGGGAGGAGTATGGAAAGCTTTTTGATTTGTCAATGCG
AAAAAGCTCAACATCAAGAACAGAGGACTGAAAGAGGGCATTAAACCAGGCTATGACGATTATGCTGACT
CTGATGAAGACCAGCATGATGCCTATTTGGAGAGGATGAAGGAGGAGGGCAAGTCCGGGAGGAGAATGC
CAATGACAGCAGCGACGACTCAGGAGAAGAGACTGATGAGTCCTTCAATCCTGGTGAAGAAGAAGAAGAT
GTGGCAGAGGAGTTTGACAGCAATGCCTCTGCCAGCTCCTCCAGCAATGAGGGTGACAGTACCCTGAAG
AGAAGAAACGGGAACAGCTCAAAAGGGCTAAGATGGCCAAGGATCGAAAGAGCCGAGGAAGTCTCAGA
GGCAAAGAAGGGTAAAGATCCAAACGCCCAAAGAGGCCATGTCTGCGTACATGCTGTGGCTTAATGCA
AGCCGCGAGAAGATCAAGTCGGATCATCTGGCATCAGTATCACAGATCTTCCAAGAAGGCAGGGGAAA
TCTGGAAGGGAATGTCCAAGAGAAGAAAGAGGAGTGGGACCGCAAGGCTGAGGATGCTAGGAGGGAGTA
TGAGAAAGCCATGAAAGAGTATGAAGGAGGCAGAGGGGACTCGTCTAAAAGGGACAAGTCTAAGAGGGAC
AAGTCTAAGAAGAAAAGAAAGTAAAAGCAAAGATGGAAAAAAGTCCACTCCTTCCCGGGGCTCGTCAT
CCAAGTCTTATCCAGGCAGTTGAGTGACAGCTTCAAGAGCAAAGAGTTTGTGTCCAGTGTGAGAGCTC
TTCAGGCGAGAACAAGAGCAAAAAGAAGAGGAGCGGAGCGAGGACTCTGAAGAGGAGCTAGCCAGTACC
CCCTCAAAGCTCAGAGGACTCTGCCTCGGGATC

ACGCGTACGCGGCCGCTCGAG – GFP Tag – GTTTAA

Protein Sequence: >MG210205 representing BC042502
 Red=Cloning site Green=Tags(s)

MAETLEFNDIFQEYVKGSMNDGRLRLSRQGIIFKNSKTGKVDNIQAGELTEGIWRRVALGHGLKLLTKNGH
 VYKYDGFRESEFEKLSDFFKTHYRLELMEKDLCKVKGWNGTVKFGGQLL SFDIGDQPVFEIPLSNVSQCT
 TGKNEVTLEFHQNDDAEVSLMEVRFYVPTQEDGVDPEAFAQNVLSKADVIQATGDAICIFRELQCLTP
 RGRYDIRIYPTFLHLHGKTFDYKIPYTTVLRLLPHKDQRQMFVVISLDPPKQQTRYHFLILLFSKD
 EDISLTLNMEEEEVEKRFEGRLTKNMSGSLYEMVSRVMKALVNRKITVPGNFQGHSGAQCITCSYKASSG
 LLYPLERGFYVHKPPVHIRFDEISFVNFARGTTTTRSFDFE IETKQGTQYTFSSIEREEYGKLFDFVNA
 KKLNIKNRGLKEGINPGYDDYADSDQHDAYLERMKEEGKIREENANDSSDSSGEETDESFNPGEEEEE
 VAEFDSNASASSSSNEGSDREKKREQLKRAKMAKDRKSRRKSSEAKKGKDPNAPKRPMAYMLWNA
 SREKIKSDHPGISITDL SKKAGEIWKGMSKEKKEEWRKAEDARREYKAMKEYEGGRGDSKRDKSKRD
 KSKKKKKVKAKMEKKSTPSRGSSSKSSSRQLSDSFKSKEFVSSDESSESSGENKSKKKRRRSEDSEELAST
 PSKLRGLCLGI

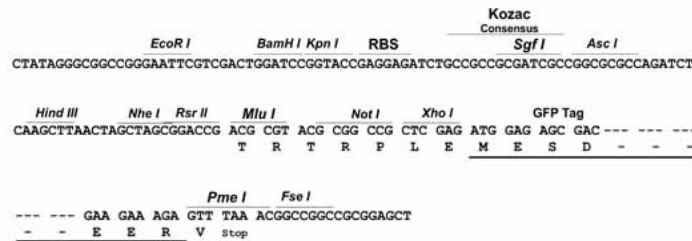
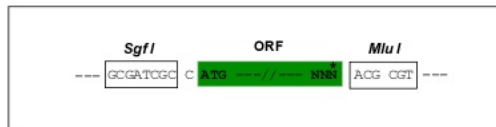
TRTRPLE - GFP Tag - V

Restriction Sites:

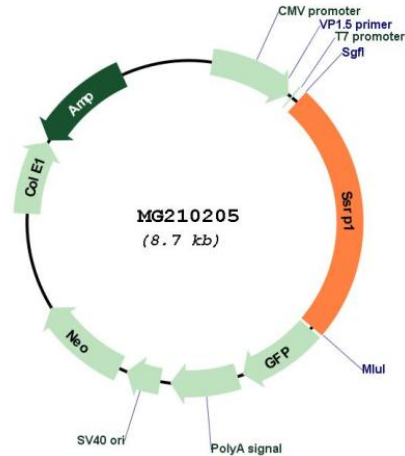
SgfI-MluI

Cloning Scheme:

Cloning sites used for ORF Shutting:



Plasmid Map:



ACCN: BC042502

ORF Size: 2133 bp

OTI Disclaimer: The molecular sequence of this clone aligns with the gene accession number as a point of reference only. However, individual transcript sequences of the same gene can differ through naturally occurring variations (e.g. polymorphisms), each with its own valid existence. This clone is substantially in agreement with the reference, but a complete review of all prevailing variants is recommended prior to use. [More info](#)

OTI Annotation: This clone was engineered to express the complete ORF with an expression tag. Expression varies depending on the nature of the gene.

Components: The ORF clone is ion-exchange column purified and shipped in a 2D barcoded Matrix tube containing 10ug of transfection-ready, dried plasmid DNA (reconstitute with 100 ul of water).

Reconstitution Method:

1. Centrifuge at 5,000xg for 5min.
2. Carefully open the tube and add 100ul of sterile water to dissolve the DNA.
3. Close the tube and incubate for 10 minutes at room temperature.
4. Briefly vortex the tube and then do a quick spin (less than 5000xg) to concentrate the liquid at the bottom.
5. Store the suspended plasmid at -20°C. The DNA is stable for at least one year from date of shipping when stored at -20°C.

RefSeq: [BC042502.1](#)

RefSeq Size: 2792 bp

RefSeq ORF: 2135 bp

Locus ID: 20833

Cytogenetics: 2 49.45 cM

Gene Summary: Component of the FACT complex, a general chromatin factor that acts to reorganize nucleosomes. The FACT complex is involved in multiple processes that require DNA as a template such as mRNA elongation, DNA replication and DNA repair. During transcription elongation the FACT complex acts as a histone chaperone that both destabilizes and restores nucleosomal structure. It facilitates the passage of RNA polymerase II and transcription by promoting the dissociation of one histone H2A-H2B dimer from the nucleosome, then subsequently promotes the reestablishment of the nucleosome following the passage of RNA polymerase II. The FACT complex is probably also involved in phosphorylation of 'Ser-392' of p53/TP53 via its association with CK2 (casein kinase II). Binds specifically to double-stranded DNA. Also acts as a transcriptional coactivator for p63/TP63.[UniProtKB/Swiss-Prot Function]