

## Product datasheet for **MG210203**

### Mipep (BC110358) Mouse Tagged ORF Clone

#### Product data:

Product Type:	Expression Plasmids
Product Name:	Mipep (BC110358) Mouse Tagged ORF Clone
Tag:	TurboGFP
Symbol:	Mipep
Synonyms:	5730405E07Rik; MIP
Mammalian Cell Selection:	Neomycin
Vector:	pCMV6-AC-GFP (PS100010)
E. coli Selection:	Ampicillin (100 ug/mL)



[View online »](#)

**ORF Nucleotide Sequence:**

>MG210203 representing BC110358  
 Red=Cloning site Blue=ORF Green=Tags(s)

TTTTGTAATACGACTCACTATAGGGCGGCCGGGAATTCGTCGACTGGATCCGGTACCGAGGAGATCTGCC  
 GCC**GCGATCGCC**

ATGCTGCTGGCGCCGGGCACGGTACGCCCGCCGGCTGTGCGGCCGGGAGCCGCGCGGCTCTGCAGG  
 GACGCACAGGCCGAGCTGCGCCCGGGACGTCACTACTAGCTGGTCCCGGTGGGCGCCGCTTCAACGT  
 CAAGCCCCAGAGCCACCTATGGAACCTGTTGGGGAGCGCCGGGTCTTTTTGGAGTTCTTGAGCTCAGC  
 ACCCTGAAGGATTCCAAGTTGCCAAGAGGAAGCCTGAAGAAGACGGAGTGGCTGGTAGAGCGAGCAT  
 GTTCCACACCCAGGGCCACAGACAGTCTCATTGACGAACTCTCGGATTGCCTGTGCAGAGTGGC  
 TGACTTGGCGGACTTTGTGAAAATTGGACACCCAGACCCTGCATTAGAGAGGCTGCGCAAGAGGCTGC  
 AGAAGTATTGGCACCATGGTGGAAAAGTTGAATACAAACGTGGAGCTGTATCAGAGTCTGCAAAGGTTAC  
 TGGGTGATAAGAAGCTTATGGAGTCCCTTATGCGGAAACCAGGCGAGTGGCCGAACATTTATGTTTGA  
 TTTTGAATCAGTGAATCCATCTAGATGAAGAAAAGCGCAGAAGAGCAGTGGACCTCAATGTTAAGATC  
 TTGGACTTGAGCAATGCTTTCCTCATGAGAACCACTTTCCCAACAAGATCCGGAAGAGTCTTTACCAG  
 AGCACATTCAGCACCACTTTGCCGTGACGGAAGCCACTTAATCATTGACGGCCTGCATGCAAGAAGCCTC  
 CGATGACTTGGTTCGGGAGGCTGCTTATAAAATTTTCCTTATCCCAATGCCGATCAGTTGAAATGTTTA  
 GAGGAATTGCTAAGCAGCAGAGACCTTCTGGCAAAATTAGTAGGTTATTCTACATTTTCCACAGGGCCC  
 TCCAAGGAACCATAGCTCAGACTCCAGAGACTGCATGCAGTTCCCTTGAGAAGCTATCTGAAAAGCTCTC  
 TGAAAGAACTAGAAAAGATTTCAAGATGATGCAAGGAATGAAAACAAAATAAATCCTCAAAATTTAAA  
 CTAATGCCTTGGGACCTCCCTACTACAGCGGTGTGATTTCGTGCAGAGAGGATAAATTTGAGCCAGTT  
 TATACTGCCGTTTTTATCCCTTGGAGCTTGCATGGAAGGCCTGAATGTCTTATTTAACAACCTGCTGGG  
 CATCACCTTATATGCAGAGCAGACCTTCAAAGGAGAGGTGTGGTGAATGACATCCGGAAGCTGGCTGTT  
 GTTCATGAATCTGAAGGGCTGCTGGGTACATTTACTGTGATTTTTTCCAGAGAGCAAACAAGCCACAGC  
 AGGATTGCCACTTCACCATCCGAGGAGGCAGATTAAGGAAGATGGCAGCTATCAGCTTCCAGTGGTCTGT  
 TCTCATGCTGAATCTTCTCATGCTTCCAGGGATTTCCCTACATTATTAACCTCCAGGAATGATGGAAAAT  
 CTCTCCATGAAATGGGCCATGCCATGCATTCAATGCTTGGACGAACTCGGCACCAACATGCTCACTGGGA  
 CCAGGTGCCCTACTGACTTTGCTGAAGTCCATCTATTCTGATGGAGTACTTTTCAAATGATTACCGAGT  
 AGTCAGCCAGTTCGCCAAGCATTATCAGACTGGTCAGCCACTCCCGAAAGCTATGGTGTCTCGTCTCTGT  
 GAGTCTAAGAAGTTTGCACAGCAGCAGAAATGCAGCTTCAGGTCTTTTATGCCGCCCTGGATCAAATCT  
 ACCATGGCCAGCATCCCCTGAAGAAGTCAACCACAGATATCCTCATGGAAACACAAGAGCAGTTCATGG  
 CTTGCCCTATGTTCTGACACTGCCTGGCAGCTGAGGTTAGCCACCTCGTGGGATATGGTGCCAAGTAT  
 TACTCATACCTGATGTCCAGGGCTGTGGCATCCATGATCTGGAAGGAGTGTCTTACAGGATCCTTTTA  
 ACAGGGCCGCTGGGGAACGCTACCGCAGAGAGATGTTGGCCCATGGTGGAGGCAAGGAGCCCATGCTTAT  
 GATTCAAGGCATGCTGCAGAAGTGTCTTCCATCGATGACTTTGTGGATGCCCTCGTGTCTGACATGAAT  
 CTGGACTTTGAAACGTTCTTCTGGATTCTAAA

**ACGCGT**ACGCGGCCGCTCGAG - GFP Tag - GTTTAA

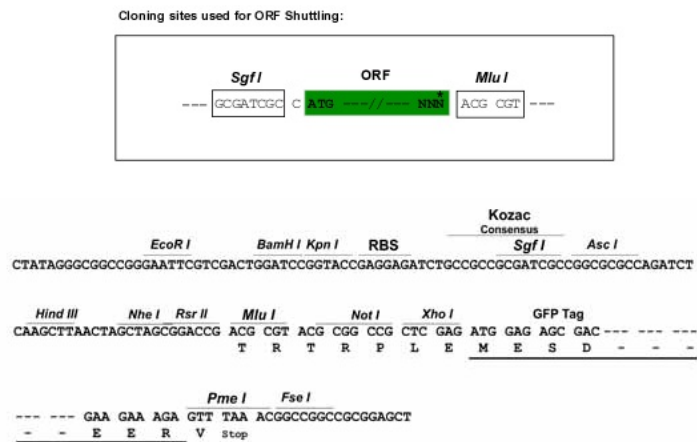
**Protein Sequence:** >MG210203 representing BC110358  
 Red=Cloning site Green=Tags(s)

MLLAAGARYARRLCGRGAAAALQGRTRGRSCARDVSTSWSPVGAANVVKPQSHLWNLGERRGLFGVPELS  
 TPEGFQVAQEEALKKTEWLVERACSTPPGPQTVLIFDELSDCLCRVADLADFVKIGHDPDAFREAAQEAC  
 RSIGTMVEKLNNTVELYQSLQRLLGDKKLMESLDAETRRVAELFMDFEISGIHLDEEKRRRAVDLNVKI  
 LDLSNAFLMRTNFPNKIRKSLLEPHIQHHFARDGSHLIIDGLHAEASDDLVREAAKYIFLYPNADQLKCL  
 EELLSSRDLLAKLVGYSTFSHRALQGTIAQTPEVTVMQFLEKLEKLSERTRKDFKMMQGMKTKLNPQNSK  
 LMPWPPYYSGVIRAERYNIEPSLYCPFLSLGACMEGLNVLFNKLLGITLYAEQTFKGEVWCNDIRKLAV  
 VHESEGLLGVIYCDFQRANKPQQDCHFTIRGRLKEDGSYQLPVVVLMLNLPASRDFPTLLTPGMMEN  
 LFHEMGHAMHSMGRTRHQHVTGTRCPTDFAEVPISILMEYFSDYRVVSQFAKHYQTGQPLPKAMVSRCL  
 ESKKVCTAAEMQLQVFAALDQIYHQHPLKKSTTDILMETQEYFGLPYVPDPTAWQLRFSHLVGYGAKY  
 YSYLMSRAVAMIWKECFLQDPFNRAAGERYRREMLAHGGGKEPMLMIQGMKQKCPISIDDFVDALVSDMN  
 LDFETFFLDSK

TRTRPLE - GFP Tag - V

**Restriction Sites:** SgfI-MluI

**Cloning Scheme:**



**ACCN:** BC110358

**ORF Size:** 2135 bp

**OTI Disclaimer:** The molecular sequence of this clone aligns with the gene accession number as a point of reference only. However, individual transcript sequences of the same gene can differ through naturally occurring variations (e.g. polymorphisms), each with its own valid existence. This clone is substantially in agreement with the reference, but a complete review of all prevailing variants is recommended prior to use. [More info](#)

**OTI Annotation:** This clone was engineered to express the complete ORF with an expression tag. Expression varies depending on the nature of the gene.

**Components:** The ORF clone is ion-exchange column purified and shipped in a 2D barcoded Matrix tube containing 10ug of transfection-ready, dried plasmid DNA (reconstitute with 100 ul of water).

**Reconstitution Method:**

1. Centrifuge at 5,000xg for 5min.
2. Carefully open the tube and add 100ul of sterile water to dissolve the DNA.
3. Close the tube and incubate for 10 minutes at room temperature.
4. Briefly vortex the tube and then do a quick spin (less than 5000xg) to concentrate the liquid at the bottom.
5. Store the suspended plasmid at -20°C. The DNA is stable for at least one year from date of shipping when stored at -20°C.

**RefSeq:** [BC110358](#), [AAI10359](#)

**RefSeq Size:** 2401 bp

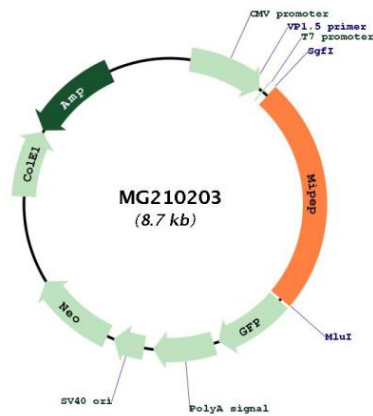
**RefSeq ORF:** 2135 bp

**Locus ID:** 70478

**Cytogenetics:** 14 D1

**Gene Summary:** Cleaves proteins, imported into the mitochondrion, to their mature size.[UniProtKB/Swiss-Prot Function]

**Product images:**



Circular map for MG210203