

Product datasheet for **MG210199**

Prep (NM_011156) Mouse Tagged ORF Clone

Product data:

Product Type:	Expression Plasmids
Product Name:	Prep (NM_011156) Mouse Tagged ORF Clone
Tag:	TurboGFP
Symbol:	Prep
Synonyms:	AI047692; AI450383; D10Wsu136e; PEP; Pop
Mammalian Cell Selection:	Neomycin
Vector:	pCMV6-AC-GFP (PS100010)
E. coli Selection:	Ampicillin (100 ug/mL)



[View online »](#)

ORF Nucleotide
Sequence:

>MG210199 representing NM_011156
 Red=Cloning site Blue=ORF Green=Tags(s)

TTTTGTAATACGACTCACTATAGGGCGGCCGGGAATTCGTCGACTGGATCCGGTACCGAGGAGATCTGCC
 GCC**CGGATCGCC**

ATGCTGTCTTCCAGTACCCGACGTGTACCGCAGCAGACCTCCGTGCAGGAGTATCATGGACATAAAA
 TTTGTGACCCGTATTCTTGGCTTGAAGACCCAGACAGCAGCAGACTAAGGCTTTCGTGGAGGCACAAAA
 CAAGATTACTGTGCCATTTCTTGAAGCAATGTCCAATCAGAGGTTTATACAAGGAGAGAATGACTGAGCTG
 TACGACTACCCCAAGTACAGCTGCCACTTCAAGAAAGGAAAGCGGTACTTTTATTTTACAATACAGGTT
 TGCAGAACCAACGCGTGTATATGTGCAAGACTCCTTAGAGGGGGAGGCCAGAGTGTTCCTGGACCCCAA
 CACTGTGCGATGATGGTACAGTGGCACTCCGAGGTTATGCCTTCAGTGAAGATGGCGAATACTTTGCC
 TATGGTCTGAGCGCCAGCGGCTCCGACTGGGTGACGATCAAGTTCATGAAGGTCGATGGTCCAAAGAGC
 TCCCGGATGTGCTGGAGAGAGTCAAGTTCACCTGCATGGCCTGGACGCATGACGGGAAGGGAATGTTCTA
 TAACTCATACCCGACGACGAGCGGAAGAGCGATGGCACAGAGACATCCACCAATCTCCACCAAAAGCTC
 TGCACCACGTCTTGGGACGGATCAGTCAGAAGATATTTTGTGTGCTGAGTTCCCGGATGAGCCTAAAT
 GGATGGGAGGAGCTGAGCTATCCGACGATGGCCGGTACGCTTGTATCCATCTGGGAGGGATGTGATCC
 AGTAAACCGACTGTGGTACTGTGACCTCCAGCAAGAACCAATGGTATCACCGGAATCCTGAAGTGGGTA
 AAAGTATAGACAACCTTGAAGGAGAATACGACTACGTAACCAACGAGGGCACAGTGTTCACATTCAAGA
 CGAACCGCAATTTCCCAATTATCGGCTGATCAATATCGACTTCACGGACCTGACGAGTCCAAGTGAA
 AGTGCTCGTACCGGAGCACGAGAAGGATGTCTTAGAATGGGTGGCTTGTGTCAGGTCCAACCTTCTGGTC
 TTGTGCTACCTCCATGACGTGAAGAATCTACAGCTTACGACCTGACGACTGGTGTCTCTCTCAAGA
 CTTTCCCGTGGATGTGGCAGCGTGGTGGGCTACAGTGGGCGCAAGAAGGACTCTGAGATCTTCTACCA
 GTTCACATCCTTCTATCTCCAGGTGCTATTTACCACTGCGATCTTACCAAGAGGAAGTGGAGCCCATG
 GTTTTCCGAGAGGTGACGGTGAAGGGAATCGATGCTGCTGATTACCAGACAATCCAGATTTTCTACCCTA
 GCAAGGATGGCACCAAGATTCCCATGTTTATTGTGCATAAAAAAGGCATAAAGCTGGATGGCTCACACCC
 TGCTTTCTTATATGGCTACGGGGCTTCAACATCTCCATTACACCAACTACAGCGTGTCCAGGCTCATT
 TTTGTGAGACATATGGGCGGCTCCTCGCGGTGGCTAACATCAGAGGCGGCGGTGAATACGGAGAGACGT
 GGCACAAAGTGGTATCTTGGCCAACAACAGAAGTGTGTTGATGACTTCCAGTGTGCTGCTGAGTACCT
 CATCAAGGAAGGTTACACATCTCCAAGAGGCTCAGATCAACGGAGGCTCCAACGGCGGCTCTTAGTA
 GCTGCTTGGCAAATCAGCGTCCAGACCTCTTCCGCTGTGTTATTGCCAGGTTGGAGTGTGACATGT
 TGAAGTTCACAAATTTACTATCGGCCATGCATGGACACTGATTACGGGTGCTCCGACACTAAACAACA
 CTTTGAATGGCTTCTCAAATACTCGCCACTACACAATGTGAAGCTTCCGGAGGCAGACGACATCCAGTAC
 CCGTCCATGCTTCTCTCACGGCTGACCACGACACCGCGTGGTCCCGCTGCACTCACTGAAGTTCATTG
 CCACCTTTCAGTACATCGTGGGCCGAGCCGGAAGCAGAGCAACCCCTGCTCATCCACGTGGACACCAA
 GGCCGGCCACGGGGCCGGGAAACCCACCGCCAAGTGATAGAAGAAGTCTCGGATATGTTTGCCTTCATA
 GCACGGTGCCTGAACATCGAGTGGATCCAG

AG**CGGACCG**ACGCGTACGCGGCCGCTCGAG - GFP Tag - GTTTAA

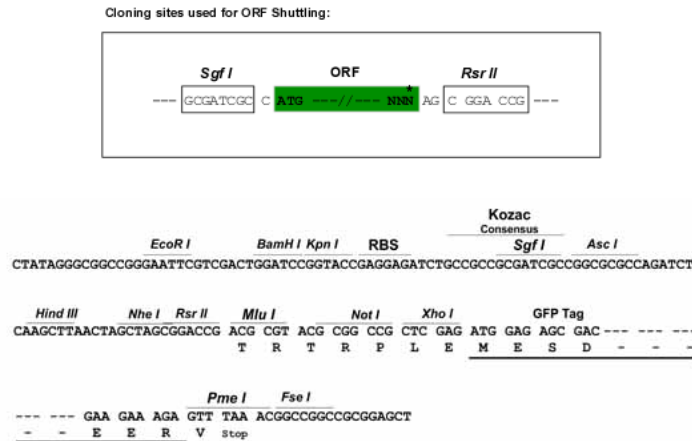
Protein Sequence: >MG210199 representing NM_011156
Red=Cloning site Green=Tags(s)

MLSFQYPDVYRDETSVQEYHGHIKIDPYSWLEDPDSEQTKAFVEAQNKITVPFLEQCPIRGLYKERMTEL
 YDYPKYSCHFKKGKRYFYFYNTGLQNQRVLYVQDSLEGEARVFLDPNTLSDDGTVLRGYAFSEEDGEYFA
 YGLSASGSDWVTIKFMKVDGAKELPDVLERVKFTCMAWTHDGKGMFYNSYPQQDGKSDGTETSTNLHQKL
 CYHVLGTDQSEDILCAEFPDEPKWMGGAELSDDGRYVLLSIWEGCDPVNRLWYCDLQQEPNGITGILKWV
 KLIDNFEGEYDYVTNEGTVFTFKTNRNSPNYRLINIDFTDPDESKWKVLVPEHEKDVLEWVACVRSNFLV
 LCYLHDVKNILQLHDLTTGALLKTFPLDVGSVVGYSGRKKDSEIFYQFTSFLSPGVYHCDLTKEELEPM
 VFREVTYKVIDAADYQTIQIFYPYKDGTKIPMFIHVHKKGIKLDGSHPAFLYGGFNISITPNYSVSRLLI
 FVRHMGVAVANIRGGGEYGETWHKGGILANKQNCFFDQCAAAYLKEGYTSPKRLTINGGSSNGLLV
 AACANQRPDLFQCVIAQVGVMDMLKFHKFTIGHAWTTDYGSDTKQHFELLKYSPLHNVKLPEADDIQY
 PSMLLLTAHDDRVPVPLHSLKFIATLQYIVGRSRKQSNPLLIHVDTKAGHGAGKPTAKVIEEVSDMFAFI
 ARCLNIEWIQ

SGPTRRRLE - GFP Tag - V

Restriction Sites: SgfI-RsrII

Cloning Scheme:



ACCN: NM_011156

ORF Size: 2130 bp

OTI Disclaimer: The molecular sequence of this clone aligns with the gene accession number as a point of reference only. However, individual transcript sequences of the same gene can differ through naturally occurring variations (e.g. polymorphisms), each with its own valid existence. This clone is substantially in agreement with the reference, but a complete review of all prevailing variants is recommended prior to use. [More info](#)

OTI Annotation: This clone was engineered to express the complete ORF with an expression tag. Expression varies depending on the nature of the gene.

Components: The ORF clone is ion-exchange column purified and shipped in a 2D barcoded Matrix tube containing 10ug of transfection-ready, dried plasmid DNA (reconstitute with 100 ul of water).

- Reconstitution Method:**
1. Centrifuge at 5,000xg for 5min.
 2. Carefully open the tube and add 100ul of sterile water to dissolve the DNA.
 3. Close the tube and incubate for 10 minutes at room temperature.
 4. Briefly vortex the tube and then do a quick spin (less than 5000xg) to concentrate the liquid at the bottom.
 5. Store the suspended plasmid at -20°C. The DNA is stable for at least one year from date of shipping when stored at -20°C.

RefSeq: [NM_011156.3](#)

RefSeq Size: 2768 bp

RefSeq ORF: 2133 bp

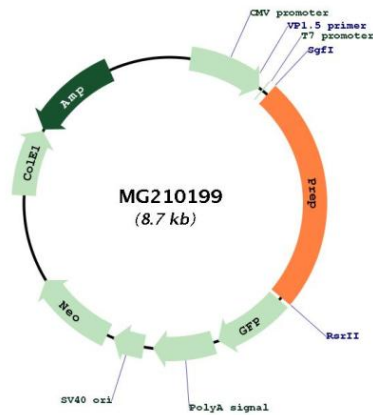
Locus ID: 19072

UniProt ID: [Q9QUR6](#)

Cytogenetics: 10 23.27 cM

Gene Summary: Cleaves peptide bonds on the C-terminal side of prolyl residues within peptides that are up to approximately 30 amino acids long.[UniProtKB/Swiss-Prot Function]

Product images:



Circular map for MG210199