

## Product datasheet for **MG210197**

### **Cnot4 (BC058778) Mouse Tagged ORF Clone**

#### **Product data:**

Product Type:	Expression Plasmids
Product Name:	Cnot4 (BC058778) Mouse Tagged ORF Clone
Tag:	TurboGFP
Symbol:	Cnot4
Synonyms:	Not4h, Not4hp
Mammalian Cell Selection:	Neomycin
Vector:	pCMV6-AC-GFP (PS100010)
E. coli Selection:	Ampicillin (100 ug/mL)



[View online »](#)

**ORF Nucleotide Sequence:**

>MG210197 representing BC058778  
 Red=Cloning site Blue=ORF Green=Tags(s)

TTTTGTAATACGACTCACTATAGGGCGGCCGGGAATTCGTGCGACTGGATCCGGTACCGAGGAGATCTGCC  
 GCC**GCGATCGCC**

ATGTCCTCGCAGTCTGATGCAAAGGAAGACCCTGTGGAATGCCCTCTTTCATGGAGCCCTTGGAAATAG  
 ATGATATTAACTTTTCCCTTGACCTGTGGCTACCAGATATGCCGATTTTGTGGCATCGAATTCGCAC  
 TGATGAGAATGGCTTTGTCTGCGATGTAGAAAGCCATATCCAGAAGATCCAGCAGTTTACAAACCACTT  
 TCCCAGGAAGAATTACAAAGGATAAAGAATGAGAAAAACAGAAACAAAATGAAAGAAAACAGAAAATCT  
 CAGAAAAAGAAAACATTTGGCTAGTGTACGTGTTGTACAAAAAACCTTGTGTTTGTGTAGGTCTGTC  
 ACAGCGCTAGCAGACCCAGAAGTTTTAAACGACCAGAGTATTTGGGAAGTTTGGTAAAAACATAAA  
 GTTGTCAATAATAGCACATCCTATGCAGGCTCACAGGGTCCGAGTCCAGTGCCTTATGTAACGTATA  
 TCCGGTCAGAAGATGCTCTCAGAGCAATACAGTGTGTCAACAATGGTAGTAGATGGCAGGACACTAAA  
 GGCATCTTTAGGTACAACAAAGTACTGCAGTTATTTCTTAAAGAACATGCAGTGCCCAAAGCCTGACTGC  
 ATGTATCTTCATGAATTTGGGAGATGAGGACGCCAGCTTACAAAAAGAGGAAATGCAGGCGGGTAAGCACC  
 AAGAATATGAACAGAAGCTCCTCCAAGAATTATATAAATTAATCCCAATTTTCTTCAGCTATCTACGGG  
 TTCAGTTGATAAGAATAAGAACAAAGTGACACCATTACAAAGCCCCATTGACAAACCTTCAGATTCTCTC  
 AGTATAGGGAATGGTGATAATTTCCAACAGATATCTAACAGTGATACGCCCTTCACCACCCTGGTTTAT  
 CAAAATCCAACCTGTATCCCCATCAGTTCATCCAATCACAGTGCAGGCTCCTTTTGAAGGGGCAGT  
 AACAGAGTCACAGTCATTATTCTCAGACATTTTCGCCACCCCAACCCTATACCAAGTGGGCTTCCTCCT  
 TTTCCCAGCTCTCCACAGACACCCAGTATTGGCTACAGCTCCAGAACCACAGAGCCTTTCACATCAG  
 AAACAATCCCAGTTTCATCATCTACAGACTGGCAAGCAGCATTTCGGCTTTGGTTCTTAAACAACCAGA  
 GGATGACTTGGGTTTGACCCCTTTGATGTCACCTCGAAAAGCCTTAGCAGACCTGATTGAGAAGGAACTA  
 TCCGTCCAAGATCAACCTTCCCTTTCCCCACATCTCTTCAGAACGCCTCCTCACACACTACGACCGCCA  
 AAGGGCCAGGCTCTGGATTCTGCACTCTGCTGCACCTACAAATGCCAACTCTCTCAATAGTACCTTTTC  
 AGTCTTGCCACAGAGTTCCCTCAATTTTCAGCAGCACCAGCAGTTTATAAATTCGTTTCGGTTTTCCAGGC  
 CAGGCAGCCCGCTATCCTTGGATGGCTTTCCACGCAATAGCATCATGCCTTGAACCACACAGCAAACC  
 CCACCTCAATAGTAATTTCTGGACTTGAATCTCCCGCCACAGCACAACACAGGTCTGGGAGGGATCCC  
 CATAGCAGACAACAACAGTTCTGTAGAGAGTTTAAATATGAAGGAATGGCAGGACGGGCTAAGGGCACTT  
 CTACCAACATTAACATCACTTTGGTGGACTGCCCAATTCCTTCTCCCCTCCAAGGCCAACACAGTG  
 CACCAACGTCCAACACTGCCACCACGGACAGCGTGAGTTGGGACAGCCCTGGCAGCTGGACAGACCAGC  
 CATCATCACAGGTATTCCAGCATCTTCAGAAACACTTTAGACTCTATTCAAGACGACAATCCTCCACAC  
 TGGCTAAAATCCCTACAGGCCCTCACAGAGATGGACGGCCCGCAGCGCTGCCTCGTACAACCCCATCACA  
 GCGCCCTTTCAGCACACAGATCCCTCTGCACAGAGCCAGTTGGAACCCCTACCCACCTCCTTCAAATCC  
 CTCCAGCTTCCACTCTCCACCCCGAGGCTTCAGACAGCCTTCAGACCCCGCAGAAAACCCCGACAGAT  
 CTGCTACAGAGTCCACACTGGACCGCCAC

**ACGCGT**ACGCGGCCGCTCGAG – GFP Tag – GTTTAA

**Protein Sequence:** >MG210197 representing BC058778  
 Red=Cloning site Green=Tags(s)

MSRSPDAKEDPVECPLCMEPLEIDDINFFPCTCGYQICRFCWHIRTDENGLCPACRKPYPEDPAVYKPL  
 SQEELQRIKNEKKQKQNERKQKISENRKHLASVRVVQKNLVFVVLGSQLADPEVLKRPEYFGKFGKIHK  
 VVINNSTSYAGSQGPSASAYVTYIRSEDALRAIQCVNNVVVDGRTLKASLGTTKYCSYFLKNMQCPKPCD  
 MYLHELGDAAASFKEEMQAGKHQEQKLLQELYKLNPNFLQLSTGSDKNKNKVTPQLQSPIDKPSDSL  
 SIGNGDNSQQISNSDTPSPPPGLSKSNPVIPISSSNHSARSPFEGAVTESQSLFSDNFRHPNPIPSGLPP  
 FPSSPQTPSDWPTAPEPQSLFTSETIPVSSSTDWQAAFGFGSSKQPEDDLGDFDPDVTRKALADLIEKEL  
 SVQDQPSLSPTSLQNASHTTTAKGPGSGFLHSAAPTANSLNSTFSVLPQRFPPQFQHRAYNSFGFPG  
 QAARYPWMAFPRNSIMHLNHTANPTSNSNFLDLNLPQHNTGLGGIPIADNNSVESLNMKEWQDGLRAL  
 LPNININFGGLPNSSSPSNANHSAPTSNTATTDSVSWDSPGSWTDPAAITGIPASSGNTLDSIQDDNPPH  
 WLKSLQALTEMDGPSAASSQPHHSAPFSTQIPLHRASWNPYPPSPNPSSFHSPPPGFQTAFRPPSKTPTD  
 LLQSSTLDRH

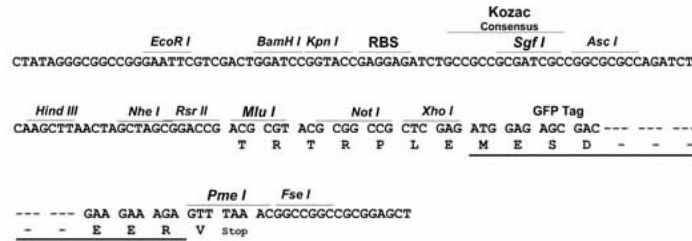
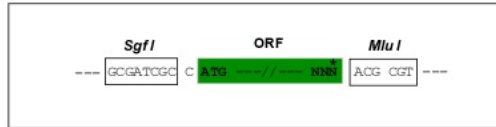
TRTRPLE - GFP Tag - V

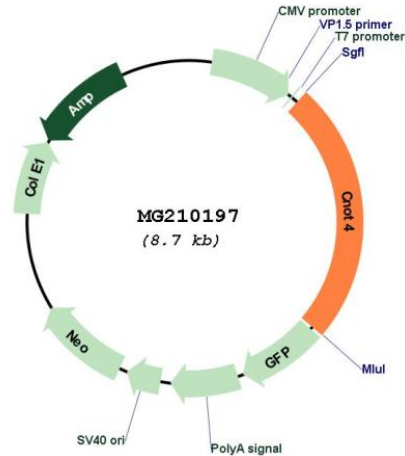
**Restriction Sites:**

SgfI-MluI

**Cloning Scheme:**

Cloning sites used for ORF Shutting:



**Plasmid Map:**


**ACCN:** BC058778

**ORF Size:** 2132 bp

**OTI Disclaimer:** The molecular sequence of this clone aligns with the gene accession number as a point of reference only. However, individual transcript sequences of the same gene can differ through naturally occurring variations (e.g. polymorphisms), each with its own valid existence. This clone is substantially in agreement with the reference, but a complete review of all prevailing variants is recommended prior to use. [More info](#)

**OTI Annotation:** This clone was engineered to express the complete ORF with an expression tag. Expression varies depending on the nature of the gene.

**Components:** The ORF clone is ion-exchange column purified and shipped in a 2D barcoded Matrix tube containing 10ug of transfection-ready, dried plasmid DNA (reconstitute with 100 ul of water).

**Reconstitution Method:**

1. Centrifuge at 5,000xg for 5min.
2. Carefully open the tube and add 100ul of sterile water to dissolve the DNA.
3. Close the tube and incubate for 10 minutes at room temperature.
4. Briefly vortex the tube and then do a quick spin (less than 5000xg) to concentrate the liquid at the bottom.
5. Store the suspended plasmid at -20°C. The DNA is stable for at least one year from date of shipping when stored at -20°C.

**RefSeq:** [BC058778](#), [AAH58778](#)

**RefSeq Size:** 3486 bp

**RefSeq ORF:** 2132 bp

**Locus ID:** 53621

**Cytogenetics:** 6 B1

**Gene Summary:** Has E3 ubiquitin ligase activity, promoting ubiquitination and degradation of target proteins. Involved in activation of the JAK/STAT pathway. Catalyzes ubiquitination of methylated RBM15.[UniProtKB/Swiss-Prot Function]