

Product datasheet for **MG210196**

Rbak (BC059913) Mouse Tagged ORF Clone

Product data:

Product Type:	Expression Plasmids
Product Name:	Rbak (BC059913) Mouse Tagged ORF Clone
Tag:	TurboGFP
Symbol:	Rbak
Mammalian Cell Selection:	Neomycin
Vector:	pCMV6-AC-GFP (PS100010)
E. coli Selection:	Ampicillin (100 ug/mL)



[View online »](#)

ORF Nucleotide Sequence:

>MG210196 representing BC059913
 Red=Cloning site Blue=ORF Green=Tags(s)

TTTTGTAATACGACTCACTATAGGGCGGCCGGAATTCGTCGACTGGATCCGGTACCGAGGAGATCTGCC
 GCC**CGCATCGCC**

ATGTCGTTGCAGGGCCACTGTCAATCAAGGATGTGGCTGTGGCCTTCTCCAGGAGGAGTGGCAGCAGC
 TGGACCTGAGGAGAGGACCACATACAGGGATGTGATGCTGGAGACCTACAGCAACCTCGTCTCCGTGGG
 GTATGACGTTACCAAGCCAAACATGATTATTAAGTTGGAGCAGGGAGAAGAGCCCTGGACAGTGGAAAGT
 GACCGCCATGCTCAGAGGCATTTGGAAATCAGTAAAGTTTATGACCCAGAGAAGGAATTGAGGAAATG
 GCGAGAAACATCTGCAGTGCATGATGATCCCTACTGCTGGAGAGCTGAGAAGGGGGCTGCTTTTGATGA
 AGCCTACACCCTCGAAACAGCCCTCATTTCCCCAGCTCAGGTGCTCACAGCTGTGTCTCCTGTGGGGAG
 ACCCTGGAGTCTGTTTCAGAACTGATTAGCAGTGACGGAAGCTATGCACTGGAGAAGCCAGCATGTGTT
 TTGAGTGTGGAAAGCATACGGAGAAAGCCTTGAAGACTTCAACCAAGATGAGGGTAACTCCTCTCAACA
 CGATGAAAATATTTTGCAGAAAGTCACCATTTTGGAGAAACCCTTGGCTTATGAGTGCATGGAAGCCTTA
 GACAGTAAAAGTGTTCATGGCTCGTGAGAGAGCTTACATGGGGGAGAAGCCCTATGACTGGGGAGACT
 CTGGACCAGACTTCATCCAGATGTCGGACTTCAGTACATATCCGAGATCAAAATGGAAGTGAAGCCCTT
 CGAATGTACACAGTGTGGGAAGTCTTCTGTAAGAAGTCCAAATTCATCATCCACCAGAGAGCTCACACA
 GGAGAGAAGCCGTACGCTTGTAGTGTGTGTGGAAAGTCTTCAGTCAAAAGGGAACCCCTCACTGTACATC
 GGAGATCGCACTTAGAGGAGAAGCCCTATAAGTGTAAAGTGTGGGAAGACCTTTTGTGAGAAGTTACA
 CCTCACACAGCACCAGAGGACTCACTCAGGAGAGAAGCCCTATGAATGTAGCGAGTGCGGGAAGTCTTTC
 TGCCAGAAGACACACCTCACTCTCCACCAGAGGAATCACTCAGGCGAGAGGCCCTACCCGTGTAATGAAT
 GTGGGAAATCCTTCTCCCGGAAGTCTGCCCTCAATGACCATCAGAGGACACACAGGAGAGAAGTCTTA
 TAAGTGTAAAGTGTGGGAAATCCTACTACCGGAAGTCCACCCTCATTACACACCAGAGGACACACACA
 GGGGAGAAGCCCTATCAGTGTAGTGTGAGTGTGGGAAATTTCTCTCGGGTGTCTGACCTACCATACACT
 ATCGGAGCCATTTAGAAGAGAAACCTTACGAGTGTACAGAATGTGGGAAAACCTTCAATCTAAACTCTGC
 TTTTATTAGGCACTGGAAGGTCCATGCAGAAGAGAGAGTCCAGGAGTGTGGCGAGTGTGGGAAGCCATCC
 CCGCTGCAGTGTGCCCTGATCACACAGGCGACCTAGGAGAGAAGCGCTATGAGTGTAAAGTGTGGAA
 AGACCTTCTTGACAGCTCGGCCTTCCATAGGCACCAGTCCGTCCTGAAGGGGAGAAAACCTTACGAGTG
 TAATATATGCGGAAAGTCTTCTCGGATTCGTCATGCTACACTGTGCACTACAGAGGTCAATCCGAAGAG
 AAGCCCTTCGGGTGCAGTGAATGTGGGAAGACCTTCTCTCATAACTCATCCCTTTCAGACATCAAAGGG
 TCCACACCGGCGAGAAGCCGTACGAGTGTACGAATGTGGGAAGTCTTCTCTCAGAAGTGTATCTCAC
 TATCCATCACCGGATCCATTCGGGAGAGAAGCCCTACGAGTGCAGCAAGTGTGGGAAAGTGTTCCTCGCGG
 ATGTGCAACCTCACCGTACACTACCGAAGCCATTCAGGAGAGAAGCCGTATGAGTGAACAGAGTGTGGGA
 AAGTCTTTTCTCAGAAGTCGTACCTCACCGTGCATTACCGGACTCATTACAGGAGAGAAACCTTATGAATG
 TAACGAATGTGGGAAAAAATCCACCACAGATCAGCCTTCAATAGCCATCAGAGAATTCATAAAAGAGGC
 ACTGTAATGTACTCACTGTAGAAAAGCTC

ACGCGTACGCGGCCGCTCGAG - GFP Tag - GTTTAA

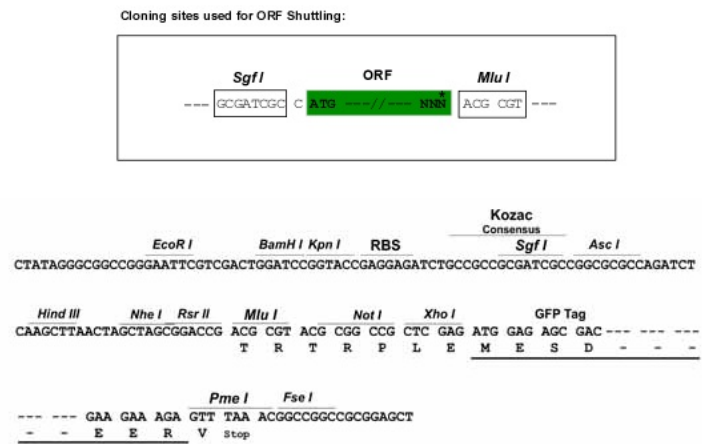
Protein Sequence: >MG210196 representing BC059913
 Red=Cloning site Green=Tags(s)

```
MSLQGPLSFKDVAFAFSQEEWQQLDPEERTTYRDVMLETYSNLVSVGYDVTKPNMIKLEQGEEPWTVVEG
DRHAQRHLEISKVYDPREGIEEIGEKHLQCDDDPYCWAERKGAADFDEAYTLETALISPSSGAHSCVSCGE
TLESVSELISSDGSYALEKPSMCFECGKAYGESLEDFNQDEGNSSQHDENILQKVTILEKPFAYECMEAL
DSESVFMARERAYMGEKPYDWGDSGPDFIQMSDFSTYPRSQMELKPFECTQCGKSFCKKSKFIIHQRAHT
GEKPYACSVCGKFSQKGTLTVHRRSHLEEKPYKCNECGKTFCCQLHLTQHQRTHSGEKPYECSECGKSF
CQKTHLTLHQRNHSGERPYPNCNECGKFSRKSALNDHQRTHTGEKLYKCNECGKSYRSTLITHQRTHT
GEKPYQCSECGKFFSRVSYLTIHYRSHLEEKPYECTECGKTFNLNSAFIRHWKVHAEERVQECGECGKPS
PLQCAPDHTGDLGEKRYECNECGKTFLDSSAFHRHQSVPEGEKTYECNICGKSFSDSSCYTVHYRGHSEE
KPFGCSECGKTFSHNSSLFRHQRVHTGEKPYECYECGKFFSQKSYLTIHHRHISGEKPYECSKCGKVFSR
MSNLTVHYRSHSGEKPYECNECGKVFSSQKSYLTVHYRTHSGEKPYECNECGKFFHHRSAFNHQRIHKRG
TVNVLTVVEKL
```

TRTRPLE - GFP Tag - V

Restriction Sites: SgfI-MluI

Cloning Scheme:



ACCN: BC059913

ORF Size: 2130 bp

OTI Disclaimer: The molecular sequence of this clone aligns with the gene accession number as a point of reference only. However, individual transcript sequences of the same gene can differ through naturally occurring variations (e.g. polymorphisms), each with its own valid existence. This clone is substantially in agreement with the reference, but a complete review of all prevailing variants is recommended prior to use. [More info](#)

OTI Annotation: This clone was engineered to express the complete ORF with an expression tag. Expression varies depending on the nature of the gene.

Components: The ORF clone is ion-exchange column purified and shipped in a 2D barcoded Matrix tube containing 10ug of transfection-ready, dried plasmid DNA (reconstitute with 100 ul of water).

Reconstitution Method:

1. Centrifuge at 5,000xg for 5min.
2. Carefully open the tube and add 100ul of sterile water to dissolve the DNA.
3. Close the tube and incubate for 10 minutes at room temperature.
4. Briefly vortex the tube and then do a quick spin (less than 5000xg) to concentrate the liquid at the bottom.
5. Store the suspended plasmid at -20°C. The DNA is stable for at least one year from date of shipping when stored at -20°C.

Note: Plasmids are not sterile. For experiments where strict sterility is required, filtration with 0.22um filter is required.

RefSeq: [BC059913](#)

RefSeq Size: 3256 bp

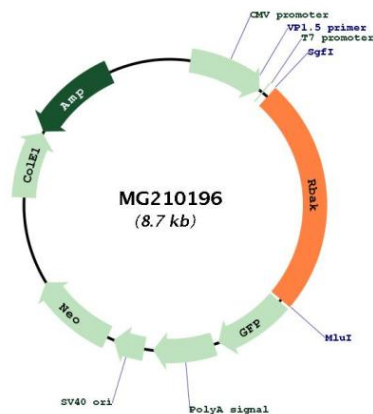
RefSeq ORF: 2132 bp

Locus ID: 57782

Cytogenetics: 5 G2

Gene Summary: May repress E2F-dependent transcription. May promote AR-dependent transcription. [UniProtKB/Swiss-Prot Function]

Product images:



Circular map for MG210196