

Product datasheet for **MG210190**

Slc44a5 (BC086641) Mouse Tagged ORF Clone

Product data:

Product Type:	Expression Plasmids
Product Name:	Slc44a5 (BC086641) Mouse Tagged ORF Clone
Tag:	TurboGFP
Symbol:	Slc44a5
Synonyms:	AA117069; Gm422
Mammalian Cell Selection:	Neomycin
Vector:	pCMV6-AC-GFP (PS100010)
E. coli Selection:	Ampicillin (100 ug/mL)



[View online »](#)

ORF Nucleotide
Sequence:

>MG210190 representing BC086641
Red=Cloning site Blue=ORF Green=Tags(s)

TTTTGTAATACGACTCACTATAGGGCGGCCGGGAATTCGTGACTGGATCCGGTACCGAGGAGATCTGCC
GCC**CGGATCGCC**

ATGGCCCCGAAGAGAAAGCCCCCAGCAGCCAGGGTGACCCAAGGAGGTATGACCCAGATTTCCAGGGAC
CTACTGCCAAAAGGACTTGTACGGACGTTTTATGCTGTCTGATCTTCTACTGTTTTATTTGGGCTACGT
TCTGTTAGGACTCTTGGCTTGGGCCATGGTGACCCAGGAAAATGGCCTATCCTACGGACAGCCAGGGA
CATTTTTGTGGCCAGAAGGGAACCCCAATGAGAACAAGACAGTTTTGTTTTACTTTAACATCTTTAGAT
GTACCAGTCTTCTATGATGCTCCGGCTACAGTGTCTACCACACAGATCTGTGTCTCCAGGTGCCCAGA
GAGATTCCTCACCTACTTGGATATGCAATTTTTGAACAAAGAAGACAAAAACTACTGGGAATACTATCGC
CAATTCGCAAGGCCAAGCCAAGCCTGTGGAGACTCTCAGAGATCTTCTGATCAGTGGTGACTGTCCCT
TAGCTGTGTACCCAAGCAGACCTTTTCTGCAGAGATGTATACCTGACCTTTCAGCCCTCAATGGTACCTG
GACGCCAGGAAGTAGGATGAAGTTTGAAGATGGAAGTGGGCAGACCAGGACTATGCTAGAATTCAGGGAG
GCTGCGAACGGCATTAGTGATCTGATCAATGCCAGGACGATTGGATTGAAGCTGCTTGAAGACTATGCTA
CCTCGTGGAAAGTGGATTCTCATCGGCCCTGACTGTTGCCATGGCACTGAGTTGGACTTTTTAATACTCCT
GAGGTTACAGCTGGGTTCTTCTGTTTCTTCATATTTGGTGTGCTCGGAATTATAGGATACGGAATA
TGGTACTGTTTTCTGGAGTACAGCAGCATTACAGAGAGCCACAGTCAACGTTCTGGATGTATGGCTTCG
GGATTCAGAGGAGAGTAAACATGTTCTTTCACTTGAAGGAGACCTGGTTTTCAATGATGATCATCTTGTG
TGCCATTGAAATCATCATCATCGTCTGATCTTCTCAGGACTCGGATCCAAGTGGCCATCATCCTG
CTGCAGGAAGGAAGCAAAGCCATTAGCTACCTCCAGTGCCTTAATCTACCCAGTTTTAACCTTCATCT
TGCTATCAATCTGCATTTCTACTGGGCTGTGACAGCCGTTTTCTTGGCTACATCAGGGTACCAATATT
CAAAGTTATGGTCCCAGCGGGCAATGTATATATGAAGATGAAACTTGTGACCCAGAGATTTTTCTTAT
ACTAACATTTCCAAAGACTGCCCCGGTGCATCGTGCAACTTTGCTTTCTATGGCGAAGGAGCATGTACC
ACAATTACATCCTGACCTTCCAGGTCTACAACCTTTTGCCTTCTTTGGCTTATAAACTTTGTCTATTGC
GTTGGGTGAGTGTGCCCTGGCTGGTGCCTTTGCTTCTATTACTGGCCATGAAAAACCCGACGACATC
CCGCCATACCCACTTTCCTACTGCGTTTGGGCGAGCAGTACGATACCACACGGGTCTCTGGCCTTTGGAT
CTTTGATCCTTGCATCCGTTTCAAGTGTAAAGTATCGTACAATACCTGGACAGGAGACTCAAAAAGGC
TCAGAACAGTGTGCTCAGTTCCTGCAGTGTGCTGCCTACAGTGTGTTTCTGGTGTGGAAAAGATGGT
AAGTTTTTAAACAGAAATGCCTACATCATGATTGCATTATATGGCAAAACTTCTGTGAGTCAACAAGAG
ATGCTTTCTATCTGCTCATGAGAAACATTCTGAAAGTACAGTTACAGATGAAGTACGACTTTGTATT
ACTCCTGGGAAAAGTCTGGTTTCTGGGATTGTAGGTGCTTGGCCTTCTACTTTCACAGAAAGACTA
CAAATAATTGTAGATGGACCAACGACTTTAAATTACTACTGGGTCCCCTTCTGACTCTTGTGTTTGGAT
CTTACATGATTGCTCACGGATTCTTACAGCTTATTCAATGTGTGTTGAAACATTTTCTGCTTCTT
GGAAGACCTAGAAAGAAACGAAGGCTCTCCTTCAAGACCCTATTCGTGACTCCGGCTCTAATGAACATT
TTGCTGGAGCAGGGCAAGATCAAGAAGCAG

ACGCGTACGCGGCCGCTCGAG - GFP Tag - GTTTAA

Protein Sequence: >MG210190 representing BC086641
 Red=Cloning site Green=Tags(s)

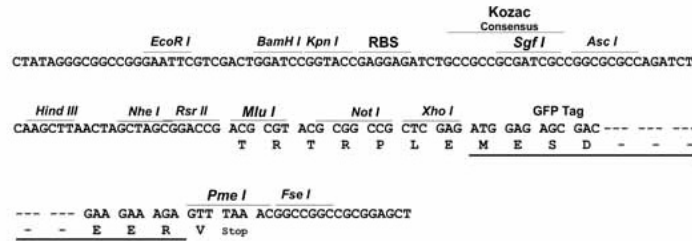
MARKRKPSSQGDPRRYDPDFQGPTAKRTCTDVLCCILFLLFILGYVLLGLLAWAHGDPRKMAYPDTSQG
 HFCGQKGTNPENKTVLFYFNIFRCTSPSMMLRLQCSTTQICVSRCPERFLTYLDMQFLNKEDKNYWEYR
 QFCKAKAKPVETLRDLLISGDCPLAVYPSRPFLQRCIPDLSALNGTWTWPGSRMKFEDGSGQTRTMLEFRE
 AANGISDLINARTIGLKLEEDYATSWKWILIGLTVAMALSWTFLILLRFTAGFLFWFFIFGVLGIIYGI
 WYCFLEYSSIQQRQSTFWMYGFGIQRRVNMFFHLKETWFSMMIILSAIEIIIIIVLIFLRTRIQVAIIL
 LQEGSKAISYLPALYVPLTFILLICISYWAVTAVFLATSGVPIFKVMVPAGQCIYEDETCDEIFPY
 TNIPKDCPGASCNFAFYGGRSYHNYILTFQVYNLFAFLWLNIFVIALGQCALAGAFASYWAMKKPDDI
 PPYPLFTAFGRAVRYHTGSLAFGSLILASVQMFVIVEYLDRLKKAQNSAAQFLHCCLQCCFWCLEKMV
 KFLNRNAYIMIALYGNFCESTRDAFYLLMRNLIKVTVTDEVYFVLLLGKVLVSGIVGLAFLFTERL
 QIIVDGPTTLNYYWVPLTLVFGSYMIAHGFFSVYSMCVETIFICFLEDLERNESPSRPYFVTPALMNI
 LLEQGIKKQ

TRTRPLE - GFP Tag - V

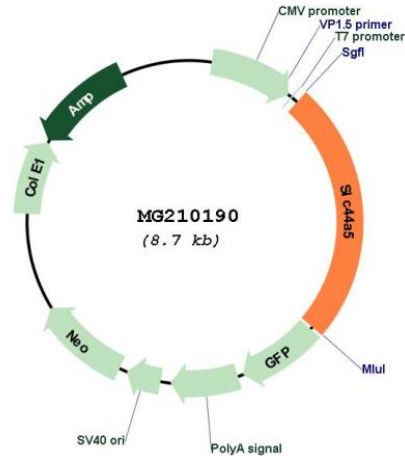
Restriction Sites: SgfI-MluI

Cloning Scheme:

Cloning sites used for ORF Shutting:



Plasmid Map:



ACCN: BC086641

ORF Size: 2132 bp

OTI Disclaimer: The molecular sequence of this clone aligns with the gene accession number as a point of reference only. However, individual transcript sequences of the same gene can differ through naturally occurring variations (e.g. polymorphisms), each with its own valid existence. This clone is substantially in agreement with the reference, but a complete review of all prevailing variants is recommended prior to use. [More info](#)

OTI Annotation: This clone was engineered to express the complete ORF with an expression tag. Expression varies depending on the nature of the gene.

Components: The ORF clone is ion-exchange column purified and shipped in a 2D barcoded Matrix tube containing 10ug of transfection-ready, dried plasmid DNA (reconstitute with 100 ul of water).

Reconstitution Method:

1. Centrifuge at 5,000xg for 5min.
2. Carefully open the tube and add 100ul of sterile water to dissolve the DNA.
3. Close the tube and incubate for 10 minutes at room temperature.
4. Briefly vortex the tube and then do a quick spin (less than 5000xg) to concentrate the liquid at the bottom.
5. Store the suspended plasmid at -20°C. The DNA is stable for at least one year from date of shipping when stored at -20°C.

RefSeq: [BC086641](#), [AAH86641](#)

RefSeq Size: 4113 bp

RefSeq ORF: 2132 bp

Locus ID: 242259
Cytogenetics: 3 H3-H4