

Product datasheet for **MG210188**

Fzd6 (NM_008056) Mouse Tagged ORF Clone

Product data:

Product Type:	Expression Plasmids
Product Name:	Fzd6 (NM_008056) Mouse Tagged ORF Clone
Tag:	TurboGFP
Symbol:	Fzd6
Synonyms:	Fz6
Mammalian Cell Selection:	Neomycin
Vector:	pCMV6-AC-GFP (PS100010)
E. coli Selection:	Ampicillin (100 ug/mL)



[View online »](#)

**ORF Nucleotide
Sequence:**

>MG210188 representing NM_008056
 Red=Cloning site Blue=ORF Green=Tags(s)

TTTTGTAATACGACTCACTATAGGGCGGCCGGGAATTCGTCGACTGGATCCGGTACCGAGGAGATCTGCC
 GCC**CGCATCGC**

ATGGAAGGTCCCCGTTTCTGTTGGCGTGCATTCTTCTGCCCTCGTAAGAGGACACAGCCTTTTACCT
 GTGAGCCAATCACCGTTCCAGATGTATGAAAATGACTTACAACATGACGTTCTTCCCTAACCTGATGGG
 TCATTATGACCAGGGGATCGCTGCTGTGAAATGGGGCACTTTCTGCATCTTGCAATCTAGAATGTTCA
 CCAACATTGAAATGTTCTTTGCCAAGCTTTTATACCACTGCACAGAGCAAATTCATGTAGTTCTAC
 CCTGTCGGAATTTGTGTGAGAAAATAGTTTCTGATTGCAAAAACATATGGACACTTTTGGCATCCGATG
 GCCTGAAGAACTTGAATGTAACAGATTGCCACACTGTGATGACACTGTTCTGTAACCTTCTCATCCACAC
 ACAGAGCTTTCTGGGCCACAGAAGAAATCAGATCAAGTCCCAAGAGACATTGGATTTTGGTGTCCAAAGC
 ACCTTAGGACTTCCGGGGACCAAGGCTATAGGTTTCTGGGAATTGAACAGTGTGCCCTCCGTGCCCAA
 TATGTATTTTAAAGTGATGAACTAGACTTTGCCAAAAGTTTCATAGGAATAGTTTCAATATTTTGTCTT
 TGTGCAACTCTGTTACGTTCTTACATTTTAAATTGACGTTAGACGATTAGATACCCAGAGAGACCAA
 TTATCTATTACTCTGTCTGCTACAGCATTGTCTCTCATGTACTTCGTGGGGTTTTTGTGGGCAATAG
 CACGGCTTGAATAAGGCAGACGAGAAGCTGGAGCTCGGGGACACCGTTGTCTAGGGTCAAAGAATAAG
 GCTTGCACTGTGGTATTTATGTTTCTGTATTTTTTACAATGGCTGGCACCCTGTGGTGGGTGATTCTCA
 CCATTACGTGGTCTTAGCTGCCGGGAGAAAATGGAGTTGCGAAGCTATTGAACAAAAGCAGTGTGGT
 CCATGCCGTTGCCTGGGGGGCGCCGGGTTCTGACCGTCATGCTGCTCGCTATGAATAAGGTTGAAGGA
 GACAACATTAGCGGCGTTTGTCTGTTGGCTGTCTCTCTTAGCCGGCATCATCTCTTGAATCATGTCCG
 CTCTGTGCCTCTGCGTATTTGTTGGGCTGTCTCTCTCTTAGCCGGCATCATCTCTTGAATCATGTCCG
 ACAAGTCATACAGCATGATGGCCGGAACCAAGAGAAGCTAAAGAAATTCATGATTCCGATCGGAGTCTTC
 AGTGGCCTGTATCTTGTGCCCTTAGTGACACTTCTCGTTGCTATGTCTATGAGCTAGTGAACAGGATCA
 CCTGGGAGATGACATGGTCTCTGATCATTGTCAACAGTACCGCATCCCGTGCCCTTACCAGGCAAATCC
 AAAAGCTCGACCAGAATTGGCTTTATTTATGATAAAATATCTGATGACATTAATTGTTGGTATCTCTGCG
 GTCTTCTGGGTTGGAAGCAAAAAGACGTGCACAGAATGGGCCGGGTTCTTAAAGCGAAACCGCAAGCGAG
 ACCCATCAGTGAGAGCCGCGAGTGTGCAAGAGTCTGTGAGTTCTTCTGAAGCACAACCTCTAAAGT
 GAAGCACAAGAAGAAGCATGGCGCACCAGGGCCCCATAGGCTGAAGGTCAATTTCCAAGTCCATGGGAACT
 AGCACAGGAGCGACCACAAATCATGGCACCTCTGCCATGGCAATCGCTGACCATGATTACTTAGGGCAAG
 AAACCTTCAACAGAAGTCCACACCTCCCCAGAAGCATCCGTCAAAGAGGGACGAGCAGACCGAGCAAACAC
 TCCCAGCGCCAAAGATCGGGACTGTGGGAACCTGCAGGGCCCAGCTCCAAGCTCTCTGGGGACCGGAAT
 GGCAGGGAAAGCCGAGCGGGCGGCTGAAGGAGAGAAGCAATGGATCAGAGGGGGCTCCAAGTGAAGGAA
 GGGTAAGTCCAAAGAGCAGCGTTCTGAGACTGGCCTGATAGACTGCAGCACTTCACAGGCCGCCAGTTC
 TCCAGAACCAACCAGCCTCAAGGGCTCCACATCTCTGCCTGTTCACTCAGCTTCCAGAGCTAGGAAAGAG
 CAGGGTGTGGCAGCCATTCCGACGCT

ACGCGTACGCGGCCGCTCGAG – GFP Tag – GTTTAA

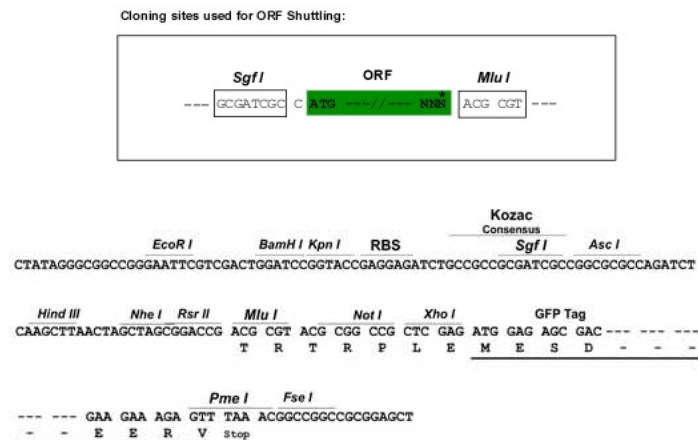
Protein Sequence: >MG210188 representing NM_008056
 Red=Cloning site Green=Tags(s)

MERSPFLLACILLPLVRGHSFLTCEPITVPRCMKMTYNMTFFPNLMGHYDQGIAAVEMGHFLHLANLECS
 PNIEMFLCQAFIPTCTEQIHVVLPCKRLCEKIVSDCKKMDTFGIRWPEELECNRPLPHCDDTVPTSHPH
 TELSGPQKKSQVPRDIGFWCPKHLRTSGDQGYRFLGIEQCAPPNMYFKSDELDFAKSFIGIVSIFCL
 CATLFTFLTFLIDVRRFRYPERPPIIYYSVCYSIVSLMYFVGFLLGNSTACNKADEKLELGDTVVLGSKNK
 ACSVVFMYFLYFFTMAGTVWWVILTITWFLAAGRKWSCEAIEQKAVWFHAWGAPGFLTVMLLAMNKVEG
 DNISGVCFVGLYDLASRYFVLLPLCLCVFVGLSLLLAGIISLNHVRQVIQHDGRNQEKLKFMIRIGVF
 SGLYLVLVLTLLGCYVYELVNRITWEMTWFSDHCHQYRIPCPYQANPKARPELALFMIKYLMTLIVGISA
 VFVWGSKKTCTEWAGFFKRNKRDPISERRVLQESCEFFLKHNSKVKKKKHGAPGPHRLKVISKSMGT
 STGATTNHGTSAMAIADHDYLGQETSTEVHTSPEASVKEGRADRANTPSAKDRDCGEPAGPSSKLSGDRN
 GRESRAGLKERNGSEGAPSEGRVSPKSSVPETGLIDCSTSQAASSPEPTSLKGSTSLPVHSASRARKE
 QGAGSHSDA

TRTRPLE - GFP Tag - V

Restriction Sites: SgfI-MluI

Cloning Scheme:



ACCN: NM_008056

ORF Size: 4087 bp

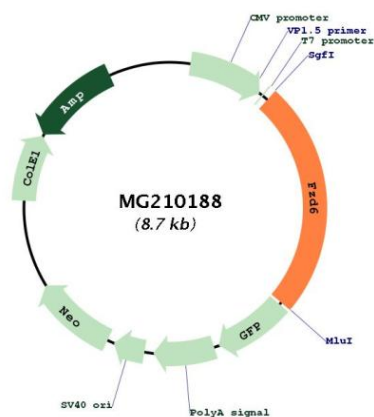
OTI Disclaimer: The molecular sequence of this clone aligns with the gene accession number as a point of reference only. However, individual transcript sequences of the same gene can differ through naturally occurring variations (e.g. polymorphisms), each with its own valid existence. This clone is substantially in agreement with the reference, but a complete review of all prevailing variants is recommended prior to use. [More info](#)

OTI Annotation: This clone was engineered to express the complete ORF with an expression tag. Expression varies depending on the nature of the gene.

Components: The ORF clone is ion-exchange column purified and shipped in a 2D barcoded Matrix tube containing 10ug of transfection-ready, dried plasmid DNA (reconstitute with 100 ul of water).

Reconstitution Method:	<ol style="list-style-type: none"> 1. Centrifuge at 5,000xg for 5min. 2. Carefully open the tube and add 100ul of sterile water to dissolve the DNA. 3. Close the tube and incubate for 10 minutes at room temperature. 4. Briefly vortex the tube and then do a quick spin (less than 5000xg) to concentrate the liquid at the bottom. 5. Store the suspended plasmid at -20°C. The DNA is stable for at least one year from date of shipping when stored at -20°C.
RefSeq:	<u>NM_008056.2</u>
RefSeq Size:	4089 bp
RefSeq ORF:	2130 bp
Locus ID:	14368
UniProt ID:	<u>Q61089</u>
Cytogenetics:	15 15.22 cM
Gene Summary:	<p>Receptor for Wnt proteins. Most of frizzled receptors are coupled to the beta-catenin canonical signaling pathway, which leads to the activation of disheveled proteins, inhibition of GSK-3 kinase, nuclear accumulation of beta-catenin and activation of Wnt target genes. A second signaling pathway involving PKC and calcium fluxes has been seen for some family members, but it is not yet clear if it represents a distinct pathway or if it can be integrated in the canonical pathway, as PKC seems to be required for Wnt-mediated inactivation of GSK-3 kinase. Both pathways seem to involve interactions with G-proteins. Activation by Wnt5A stimulates PKC activity via a G-protein-dependent mechanism. Involved in transduction and intercellular transmission of polarity information during tissue morphogenesis and/or in differentiated tissues (By similarity). Together with FZD3, is involved in the neural tube closure and plays a role in the regulation of the establishment of planar cell polarity (PCP), particularly in the orientation of asymmetric bundles of stereocilia on the apical faces of a subset of auditory and vestibular sensory cells located in the inner ear.[UniProtKB/Swiss-Prot Function]</p>

Product images:



Circular map for MG210188