

## Product datasheet for **MG210187**

### **E430025E21Rik (BC034070) Mouse Tagged ORF Clone**

#### **Product data:**

Product Type:	Expression Plasmids
Product Name:	E430025E21Rik (BC034070) Mouse Tagged ORF Clone
Tag:	TurboGFP
Symbol:	E430025E21Rik
Synonyms:	MGC31278, mKIAA0196
Mammalian Cell Selection:	Neomycin
Vector:	pCMV6-AC-GFP (PS100010)
E. coli Selection:	Ampicillin (100 ug/mL)



[View online »](#)

ORF Nucleotide  
Sequence:

>MG210187 representing BC034070  
Red=Cloning site Blue=ORF Green=Tags(s)

TTTTGTAATACGACTCACTATAGGGCGGCCGGGAATTCGTCGACTGGATCCGGTACCGAGGAGATCTGCC  
GCC**CGGATCGCC**

ATGGCAGAGCCGGTGTGGAGGTGTGGTGAAGGCCTCTGGCAGGAAGAGGAGTTGAAAAATCTTCAAG  
CTTGTTTCAGAGAGATCTCAAAACAAACTGTCTCTAAATTATGATGATTCTACTGCTGCAGGCAGAAA  
AACTGTGCAACTAATAACAAGCTCTGGAAGAGGTTCAAGGATTTACCAGTTGGAATCAAATCTACAAGTT  
TGCCAGTTTCTAGCTGACACCCGAAAGTTTCTCCATCAAATGATCAGAACCATCAACATCAAGGAGGAAG  
TCCTGATCACAGTGCAGATCATCGGGGACCTTTCTTTGCCTGGCAGTTAATTGACAGTTTCACATCCAT  
CATGCAAGAAAGCATAAGGGTAAACCCATCCATGGTTACCAAACCTCAGAGCCACGTTCTAAAGCTTGCC  
TCTGCCCTTGACCTTCCCTGCTACGTATTAATCAAGCAAATAGCCCTGATCTCCTCAGTGTGTCTCAGT  
ATTATTCAGGAGAATTGGTGTACATACGTGAGAAAGTTTTGCAGATCATTCCAGAAAGCATGTTCCATC  
TCTCCTGAAGATCATAAAGCTTCAGACCCATGACATCATGGAAGTGCCTACACGCCTGGACAAGGACAAG  
CTGCGGGACTACGCTCAGCTTGCCCGAGATATGAGGTTGCCAAGCTCACTCACGCCATCTCCATCTTTA  
CTGAGGGCATCTTGATGATGAAAACGACCTGGTGGGCATCATCAAGGTGGATCCCAAGCAGTTGCTGGA  
AGACGGAATAAGGAAAGAGCTGGTTAAACGCGTGGCTTTTCGCCCTTACCAGGGGACTGATTTCAACCTT  
CGTGCCAAAGCAAGTGAAGTTGATGCCAAAACCTGAAAGAGCTGGGGGCCACCATGGATGGGTTCCATCGCT  
CCTTTGAGTATATACAGGACTACGTGACATTTACGGTCTGAAGATTTGGCAGGAGGAAGTCTCTCGTAT  
TATAAATTATAACGTGGAACAGGAGTGTAAACTTCTTAAGAACAAGATTCAAGACTGGCAGAGTATG  
TACCAATCCACTCATATACCAATCCCGAAGTTTGACCTGTGGATGAGTCTATAACATTTATTGGTCGAC  
TCTGCAGAGAAAATCTTGCGGATCACAGACCCAAAATGACATGTTACATAGACCAGCTGAACACTTGGTA  
TGACGTGAAAACCTCATCAAGAAGTGACCAGCAGTCGCCTTCTCAGAAAATCCAGACCACCTGGGGACT  
TTTGGTCTGAATGGATTGGACAGGCTTCTGTGCTTATGATTGTGAAAGAGCTACAGAATTTCTCAGTA  
TGTTTTAGAAAATTATCCTGAAAGAGAGAACTGTTCAAGAAAATTTAAAGATGCTCATGAGTGTGTTAA  
CCCTCTAAAGAGCATAGTGGCAAATTAAGTAAAGTTTATCTTTCTGCCATACCAAAAACACAGAAGATC  
TGGAGTGTACCTGGAGGCTATAATGAAGTTGGACAGATGCAGATCCTGAGACAACAGATCGCCAATG  
AGCTAAACTCTTCTGTGATTTGATTCCAGACATCTGGCAGCTGCCCTGGATAATCTCAATAAGGCTCT  
CCTGGCAGACATCGAAGCCACTACCGGACCTTCGCTTCTTACCCAAAGAAGATAACACACTCTTA  
TATGAAATCACAGCCTATCTGGAGGCGGCTGGCATTACAAACCCCTGAATAAGATTTACATAACAACGA  
AGCGCTTACCCTATTTCCGATTGTCAACTTTCTGTTTTTGTATCGCGCAGTTGCCAAAACCTCAGTATAA  
CAAAAATCTAGGCATGGTCTGCCGGAAGCTGCCGACCCTGTTGACTGGCCACCGCTCGTCTAGGTCTG  
CTCACGCTGTGAAGCAGTTCCACTCCCGGTACACCGAGCAATTCCTGGCACTGATTGGCCAGTTTATTC  
GCTCCACAATGGAGCAGTGCACAAGCCAGAAGATGCCTGAAATGCCTGCAGATGCTGTGGGCGCCCTTCT  
CTTCTGGAGGATTATGTTCCGTATACAAAACCTCCCCGAAGGGTGGCTGAAGCCATGTGCCTAACTTC  
ATTTTTGATGAATCCGAACAGTCTG

AG**CGGACCG**ACGCGTACGCGGCCGCTCGAG - GFP Tag - GTTTAA

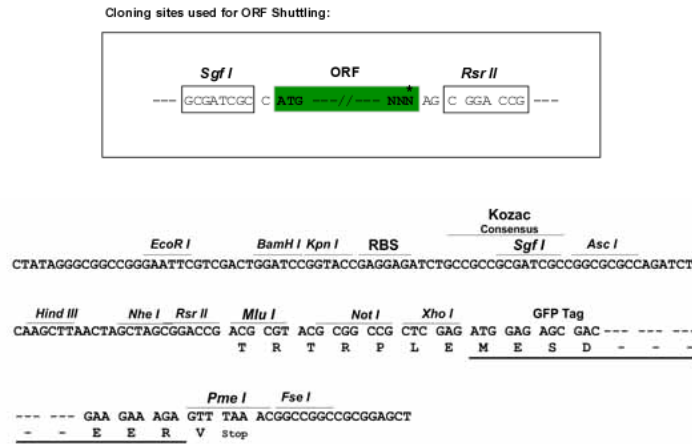
**Protein Sequence:** >MG210187 representing BC034070  
 Red=Cloning site Green=Tags(s)

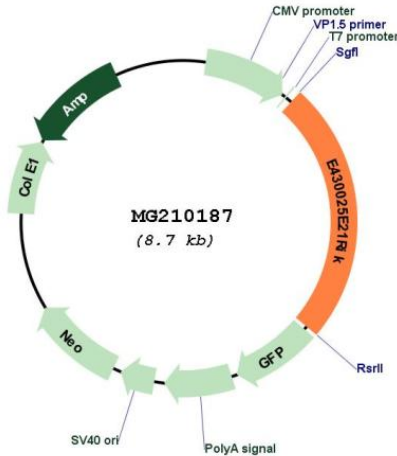
MAEPVWRCGCKASGQEEELNLQAWFREISKQILSLNYDDSTAAGRKTQVLIQALEEVQEFHQLESNLQV  
 CQFLADTRKFLHQMIRITINIKKEVLITVQIIGDLSFAWQLIDSFTSIMQESIRVNPMSVTKLRATFLKLA  
 SALDPLLRINQANSPDLLSVSQYYSSELVSYVRKVLQIIPESMFTSLLKIIKLQTHDIMEVPTRLDKDK  
 LRDYAQLGPRYEVAKLTHAISIFTEGILMMKTTLVGIIKVDPKQLLEDGIRKELVKRVAFALHRGLIFNP  
 RAKPSELMPKLKELGATMDGFHRSFEYIQDYVSIYGLKIWQEEVSRIINYNVEQECNNFLRTKIQDWQSM  
 YQSTHPIPKFAPVDESITFIGRLCREILRITDPKMTCYIDQLNTWYDVKTHQEVTSRRLFSEIQTTLGT  
 FGLNGLDRLLCFMIVKELQNFLSMFQKIIKERTVQETLKMLMSAVNPLKSIVANSSKVYLSAITKTQKI  
 WSAYLEAIMKVGQMILRQQIANELNSSCRFDSRHLAAALDNLNKALLADIEAHYRDPSPYPKEDNTLL  
 YEITAYLEAAGIHNPLNKIYITTKRLPYFPIVNFLLIAQLPKLQYNKNGMVCRKPADPVDWPPPLVGL  
 LTLKQFHSRYTEQFLALIGQFIRSTMEQCTSQKMPEMPADAVGALLFLEDYVRYTKLPRRVAEAHVPNF  
 IFDEFRTVL

SGPTRRRLE - GFP Tag - V

**Restriction Sites:** SgfI-RsrII

**Cloning Scheme:**



**Plasmid Map:**


**ACCN:** BC034070

**ORF Size:** 2127 bp

**OTI Disclaimer:** The molecular sequence of this clone aligns with the gene accession number as a point of reference only. However, individual transcript sequences of the same gene can differ through naturally occurring variations (e.g. polymorphisms), each with its own valid existence. This clone is substantially in agreement with the reference, but a complete review of all prevailing variants is recommended prior to use. [More info](#)

**OTI Annotation:** This clone was engineered to express the complete ORF with an expression tag. Expression varies depending on the nature of the gene.

**Components:** The ORF clone is ion-exchange column purified and shipped in a 2D barcoded Matrix tube containing 10ug of transfection-ready, dried plasmid DNA (reconstitute with 100 ul of water).

**Reconstitution Method:**

1. Centrifuge at 5,000xg for 5min.
2. Carefully open the tube and add 100ul of sterile water to dissolve the DNA.
3. Close the tube and incubate for 10 minutes at room temperature.
4. Briefly vortex the tube and then do a quick spin (less than 5000xg) to concentrate the liquid at the bottom.
5. Store the suspended plasmid at -20°C. The DNA is stable for at least one year from date of shipping when stored at -20°C.

**RefSeq:** [BC034070.1](#)

**RefSeq Size:** 2642 bp

**RefSeq ORF:** 2129 bp

Locus ID: 223593

Cytogenetics: 15 D1

**Gene Summary:** Acts at least in part as component of the WASH core complex whose assembly at the surface of endosomes seems to inhibit WASH nucleation-promoting factor (NPF) activity in recruiting and activating the Arp2/3 complex to induce actin polymerization, and which is involved in regulation of the fission of tubules that serve as transport intermediates during endosome sorting. May be involved in axonal outgrowth. Involved in cellular localization of ADRB2. Involved in cellular trafficking of BLOC-1 complex cargos such as ATP7A and VAMP7 (By similarity). Involved in cytokinesis and following polar body extrusion during oocyte meiotic maturation (PubMed:24998208).[UniProtKB/Swiss-Prot Function]