

Product datasheet for **MG210177**

Aplp2 (BC051999) Mouse Tagged ORF Clone

Product data:

Product Type:	Expression Plasmids
Product Name:	Aplp2 (BC051999) Mouse Tagged ORF Clone
Tag:	TurboGFP
Symbol:	Aplp2
Synonyms:	A1790698; APLP-2
Mammalian Cell Selection:	Neomycin
Vector:	pCMV6-AC-GFP (PS100010)
E. coli Selection:	Ampicillin (100 ug/mL)



[View online »](#)

ORF Nucleotide Sequence:

>MG210177 representing BC051999
 Red=Cloning site Blue=ORF Green=Tags(s)

TTTTGTAATACGACTCACTATAGGGCGGCCGGAATTCGTCGACTGGATCCGGTACCGAGGAGATCTGCC
 GCC**CGGATCGCC**

ATGGCGGCCACCGGGACCGCGGCCGCTGCGGCCACCGGCAAGCTTCTTGTCTGCTGCTGCTCGGGCTCA
 CGGCGCCCGCTGCGGCTCTGGCTGGCTACATAGAGGCTCTTGCAGCCAATGCTGGAACAGGCTTCGCTGT
 TGCTGAGCCTCAGATTGCGATGTTCTGTGGGAAGCTGAATATGCATGTGAACATTCAGACTGGCAAATGG
 GAGCCTGACCCAACAGGCACCAAGAGCTGCCTTGAACAAAGGAGGAGGTTCTTCAGTACTGCCAGGAGA
 TATATCCAGAGCTGCAGATCACAAATGTGATGGAAGCAAACCAGCCAGTCAATATTGATAGTTGGTGCCG
 AAGGGACAAAAGGCAGTGAAGAGTACATTGTTATACCATTCAAGTGTCTTGTGGGTGAATTTGTAAGT
 GATGTCCTGCTAGTTCAGATAACTGCCAGTTTTCCACCAAGAGCGGATGGAGGTGTGTGAGAAGCACC
 AGCGCTGGCACACGTTAGTCAAGGAGGCATGTCTGACTGAGGGGCTGACCTTATATAGCTATGGCATGCT
 GCTGCCCTGCGGGTAGACCAGTCCATGGCACCAGATATGTGTGCTGCCCTCAGACAAAGACTGTTGAC
 TCGGACTCGACTATGTCCAAAGAAGAGGAGGAAGAGGAAGAGGATGAAGAGGACGAAGAGGAAGACTATG
 ATCTTGATAAAAGTGAATTTCTACTGAAGCAGATTTGGAAGACTTCACAGAAGCAGCAGAGATGAGGA
 AGAAGAGGATGAGGAGGAAGGGGAGGAAGTGGTGAAGACCGTACTACTACTATGACCCCTTTAAAGGA
 GACGATTACAATGAGGAGAAATCCAACCGAACCCAGCAGCGAGGGCACCATTTAGACAAGGAGATTGTTT
 ACGATGTTAAAGTTCCTCCGACTCCCCTGCCAACCAATGATGTTGATGTGTATTTTGGAGCTCAGCGGA
 TGATAATGAGCACGCCGCTTCCAGAAGGCTAAGGAACAGCTGGAATTCGACATCGAAACCGAATGGAC
 AGGGTAAAGAAGGAATGGGAAGAGGCAGAACTTCAAGCCAAGAACCTCCCAAGACAGAAAGACAGACCC
 TCATCCAGCATTTCCAAGCTATGGTTAAAGCTTTAGAGAAAGAAGCAGCCAGTGAGAAGCAGCAGCTTGT
 GGAAACCCATCTGGCCCGAGTAGAAGCCATGCTGAATGACCGCCGACGCATAGCTCTGGAATAATACCTG
 GCTGCCCTGCAGTCTGACCCACCTCGGCCACATCGGATTTCTCAAGCTCTTCGTCGTTACGTCCGTGCTG
 AGAACAAAGATCGCTGCATACCATTGCTCATTACCAACACGTGTTGGCTGTTGACCCAGAAAAGGCCGC
 CCAGATGAAATCCAGGTGATGACACACCTCCATGTGATTGAAGAAAGAAGGAACCAAAGTCTTTCTCTT
 CTGTACAAAGTTCCTTATGTTGCTCAAGAAATCAAGAGGAAATGATGAGCTCCTTCAGGAACAGCGAG
 CGGATATGGACCAATTTACCTCCTCATCTCAGAGAACCCTGTGGATGTCCGGGTGAGCTCTGAGGAGAG
 TGAGGAGATCCCAGGTTCCACCCTCTCCATCCCTTCCCATCCTTGTCTGAGAATGAAGACTCAGCCG
 GAGTTGTACCACCAATGAAAAAGGCTCTGGAATGGCAGAACAAGACGGGGGACTGATTGTTGCAGAAG
 AAAAAGTGATTAACAGCAAGAATAAAATGGATGAAATATGGTCATTGACGAGACTCTGGATGTTAAGGA
 AATGATTTTCAATGCTGAGAGAGTTGGAGGCTTGGAGGAGCCGGAATCGGTGGGACCTTTAAGGGAG
 GATTTTCAGTTTGGAGCAATGCCCTTATTGGCTTGTGGTTATCGCAGTGGCCATTGCTACGGTCATCG
 TTATCAGCCTGGTGTGCTGAGGAAGAGGCAGTACGGCACCATCAGCCACGGGATTTGGAGGTTGACCC
 AATGCTCACCCAGAGAGCGTACCTGAACAAGATGCAGAACCATGGTTATGAAAACCCAACTACAAA
 TACCTGGAGCAGATGCAGATT

ACGCGTACGCGGCCGCTCGAG – GFP Tag – GTTTAA

Protein Sequence: >MG210177 representing BC051999
 Red=Cloning site Green=Tags(s)

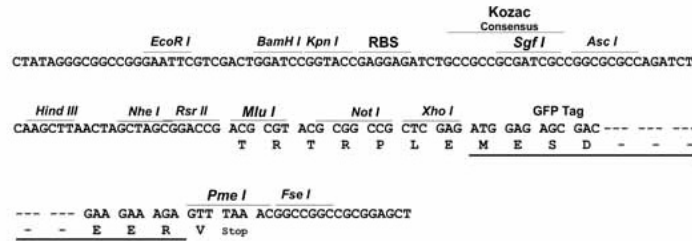
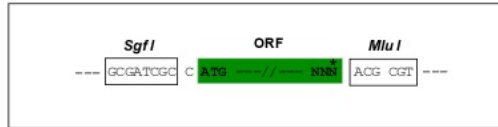
MAATGTA AAAATGKLLVLLLLGLTAPAAALAGYIEALAAANAGTGF AFAEPQIAMFCGKLNMHVNIQTGKW
 EPDPTGTKSCLGTKEEVLQYCQEIYPQLITNVMEANQPVNIDSWCRRDKRQCKSHVIVIPFKLVGEFVS
 DVLLVPDNCQFFHQERMEVCEKHQRWHTLVKEACLTEGLTLYSYGMLLPCGVDQFHGTEYVCCPQTKTVD
 SDSTMSKEEEEEEEEEDEEEDYDLKSEFPTEADLEDFTEAAAEEEEEEEEEGEEVVEDRDYDDYDFPKG
 DDYNEENPTEPSSEGTISDKEIVHDVKVPPTPLPTNDVDVYFETSADDNEHARFQKAKEQLEIRHRNRMD
 RVKKEWEEAELQAKNLPKTERQTLIQHFQAMVKALEKEAASEKQQLVETHLARVEAMLNDRRRIALENYL
 AALQSDPPRPHRILQALRRYVRAENKDRLHTIRHYQHVLAVDPEKAAQMKSQVMTHLHVIEERRNQSLSL
 LYKVPYVAQEIQEEIDELLQEQRADMDQFTSSISENPVDVRSSESEEIPPFHPLHPFSLSENEDTQP
 ELYHPMKKGSGMAEQDGLIGAEKVINSKNKMDENMVIDETLDVKEMIFNAERVGGLEEEPE SVGPLRE
 DFLSSNALIGLLVIAVAIATVIVISLVMRLKRQYGTISHGIVEVDPMLTPEERHLNKMQNHGYENPTYK
 YLEQMQUI

TRTRPLE - GFP Tag - V

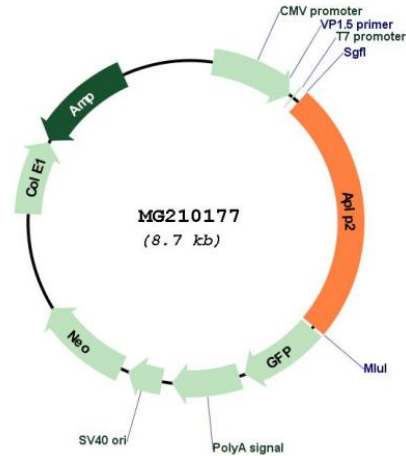
Restriction Sites: SgfI-MluI

Cloning Scheme:

Cloning sites used for ORF Shutting:



Plasmid Map:



ACCN: BC051999

ORF Size: 2123 bp

OTI Disclaimer: The molecular sequence of this clone aligns with the gene accession number as a point of reference only. However, individual transcript sequences of the same gene can differ through naturally occurring variations (e.g. polymorphisms), each with its own valid existence. This clone is substantially in agreement with the reference, but a complete review of all prevailing variants is recommended prior to use. [More info](#)

OTI Annotation: This clone was engineered to express the complete ORF with an expression tag. Expression varies depending on the nature of the gene.

Components: The ORF clone is ion-exchange column purified and shipped in a 2D barcoded Matrix tube containing 10ug of transfection-ready, dried plasmid DNA (reconstitute with 100 ul of water).

Reconstitution Method:

1. Centrifuge at 5,000xg for 5min.
2. Carefully open the tube and add 100ul of sterile water to dissolve the DNA.
3. Close the tube and incubate for 10 minutes at room temperature.
4. Briefly vortex the tube and then do a quick spin (less than 5000xg) to concentrate the liquid at the bottom.
5. Store the suspended plasmid at -20°C. The DNA is stable for at least one year from date of shipping when stored at -20°C.

RefSeq: [BC051999](#), [AAH51999](#)

RefSeq Size: 3525 bp

RefSeq ORF: 2123 bp

Locus ID: 11804

Cytogenetics: 9 16.66 cM

Gene Summary: May play a role in the regulation of hemostasis. The soluble form may have inhibitory properties towards coagulation factors. May interact with cellular G-protein signaling pathways. May bind to the DNA 5'-GTCACATG-3'(CDEI box). Inhibits trypsin, chymotrypsin, plasmin, factor XIA and plasma and glandular kallikrein (By similarity). Modulates the Cu/Zn nitric oxide-catalyzed autodegradation of GPC1 heparan sulfate side chains in fibroblasts. [UniProtKB/Swiss-Prot Function]