

Product datasheet for **MG210171**

Arhgap28 (BC066788) Mouse Tagged ORF Clone

Product data:

Product Type:	Expression Plasmids
Product Name:	Arhgap28 (BC066788) Mouse Tagged ORF Clone
Tag:	TurboGFP
Symbol:	Arhgap28
Synonyms:	AU044757; AW550892; E130310N06
Mammalian Cell Selection:	Neomycin
Vector:	pCMV6-AC-GFP (PS100010)
E. coli Selection:	Ampicillin (100 ug/mL)



[View online »](#)

ORF Nucleotide Sequence:

>MG210171 representing BC066788
 Red=Cloning site Blue=ORF Green=Tags(s)

TTTTGTAATACGACTCACTATAGGGCGGCCGGAATTCGTCGACTGGATCCGGTACCGAGGAGATCTGCC
 GCC**CGGATCGCC**

ATGGAGGTGGAGGACTCGGGCGCGTGGTGTGACCCGCTACCACTCGCACGCGCTCGCAACCCGAGG
 GCGCTGAGCCACGCTGCGCGTCCCGGGCCAGCCATCCGCTCAGCAGAAAAATCCATTCTCGCTGCCGACG
 AATCAACAGGATGCTCTCCAATGAATCCCTGCATCCTCCCTCCTTTAGTCGCTCCAATCTCAAGCCTCA
 GTAGACAGCAGCGCATCCATGGAGGAGTTCCTGCGGGAAATTGAGAGTATCAAAGAGAGCAGCGTGGGGG
 CGTCGCAGGAGCAGCCACCCACTGCTGCTGCTGCTGCTGAAGTCAAGCCAGTGGATGAAGGAGAGCT
 TGAAGCGGAGTGGCTACAAGATGTGGGATTGTCAACTCTGATCTGGCAACGAAGGAAGACGGTAAA
 GCGCTCTGTCTACATTGACTCGGACCCAAGCTGCTGCAGTAAAAAGAGATAACAACATATACTCAGA
 CTCTGAGGAAAAAGAATAAACAACCCGTCAGGGATGTCAGAGACATCTTCGGAGTCAGCGAATCTCTCC
 TAGTGATTCTTGTGAGCATGCTACTCAGTTGGACGGTACCAAGGAAGAAAAAGATCTGCCAGGAGTTACC
 AAGACAAGCAGACCTCTGCCAGACGATGCTTCTCTCAGTAGTACCACCCTATCCAATGGCGCCAGGATG
 AAGAAGTGGTTTTGTGGCCCTACAGAGTGGTTCTGTGTCAATACTTGAGGCTATCCCGGATATTGCTGT
 TCGCACCAATGGATCTGCAGATGCTGAGCAGTCGGTTCAGAGCACATTGAGTGATGATGATTATCACGGG
 AAGAAGTTCAGCAGAGGCTGAAGAGCTGTCTTTGAGGTCTTACTCAGAAATGGTGACAGAAATGC
 CTGATAGAAATAAATGGAAGAAGTCGGACATTAAGAAAGAAGACTATGTCTTAATAATTTATCATTCA
 GAAAACAAGATTTGGGTTGGCCGAGACGGGGACCTGTCTGTGGAAGACATGAAGAAAATCCGCCACCTC
 TCTCTGATTGAGCTGACAGCCTTCTTCGATACTTTGGGATACTGAAGAGAAAACAAAACCGAGCGAG
 TGAGAGCCGAGACAACGGGATTTTCGGAGTGCCACTTACAGTCTCTGGACAATGACCGGAAGAAGGA
 CCCTGCAGTAAAAGTCCCTGGTGTACAAAAATTTTTTCAGAAAGTCGAGGAATCAGGTCTGGAATCG
 GAAGGAATTTTTCGACTCTCGGGATGTACTGCCAAAGTCAAGCAGTACCAGCAAGAACTGGATGCCAGT
 TCAATGCTGACAAGTTCAAGTGGGACAAGATGTGTACAGAGAAGCTGCGGTGATGTTGAAAGCATTCTT
 CAGAGAGCTGCCACCTCTCTTCCCTGTTGAATATATACCCGCCTTCATCTCTGATGGAAAGAGGA
 CCTGACATCAAAGTGCAGTTTCAAGCCTTGACCTCATGGTTCATGGCCCTGCCTGATGCCAACAGGGACA
 CAGCGCAGGCTCTGATGGCATTCTCAATAAAGTATCGCCAACGAATCCAAGAACCGCATGAACCTGTG
 GAACATTTCCACAGTGTGGCGCCCACTGTTCTTCAGCAGAAGCAAGCACTCTGACTGCGAGGAACTG
 CTGCTGGCCAACACGGCGACCCACATCATCCGCTGATGCTGAAGTACCAGAAGATTCTGTGGAAGGTTT
 CATCTTTCTTGATCACCCAGGTCAGAAGGATGAATGAGGCCACCATGCTGTTGAAGAAGCAGCTCCCGAG
 TATGAAGAAGCTGCTCAGGAGGAAGACCCTGGATCGAGAGGTTTCAATCCTCAAGACCTCAAGGTACCA
 CAAAAATCACCTTCTCAAGAAGAATGTCTGATGTGCCAGAAGGTGTATAAGGGTCCACGCTCCACTTC
 TGTCCAAAGTGTCCATGGCCATTGAGCTCAACAGTCAGACCAAAGCCAAAGATGTCCTGGCGAAATTTCA
 GTATAAGAACCCACTAGCAACCAACATGTACTCGGGGGTTTCTGTGTCCCTGTGCTTGACCGGTTT
 CTAGATTGCCAGTGGCCAG

ACGCGTACGCGGCCGCTCGAG - GFP Tag - GTTTAA

Protein Sequence: >MG210171 representing BC066788
 Red=Cloning site Green=Tags(s)

```
MEVEDSGGVVLTAYHSHARSQPQGAEPKASRASHPLSRKSIIPRCRRINRMLSNESLHPPSFRSNSQAS
VDSSASMEEFLEIESIKESSV GASQEQPPTAAAAAAEVKPVDEGELEAEWLQDVLSTLISGNEEEDGK
ALLSTLTRTQAAAVKKRYNTYTQTLRKKNKQPVDRDVRDIFGVSESPSDSCEHATQLDGTKEEKDLPVGT
KTSRPLPDDASLSSTTL SNGAQDEEGFVALQSGSVSILEAIPDIAVRTNGSADAEQSVQSTLSDDDYHG
KNVPAAEAEELSFEVSYSEMVTMPDRNKWKKSDIKKEDYVLTKFIIQKTRFGLAETGDLSVEDMKKIRHL
SLIELTAFDFTFGIQLKRNKTERVGRDNGIFGVPLTVLLDNDRKKDPAVKVPLVLQKFFQKVEESGLES
EGIFRLSGCTAKVKQYREELDARFNADKFKWDMCHREAAVMLKAFFRELPTSLFPVEYIPAFISLMERG
PDIKVVQFQALHLMVMALPDANRDTAQUALMAFFNKVIANESKNRMNLWNISTVMAPNLFFSRKSHSDCEEL
LLANTATHIIRLMLKYQKILWKVPSFLITQVRRMNEATMLLKKQLPSMKLLRRKTLTDREVSILKTSKVP
QKSPSSRRMSDVPEGVIRVHAPLLSKVSMAIQLNSQTKAKDVLAKFQYKNPLATKHVLRGFLCVPVLDRF
LDCPVGQ
```

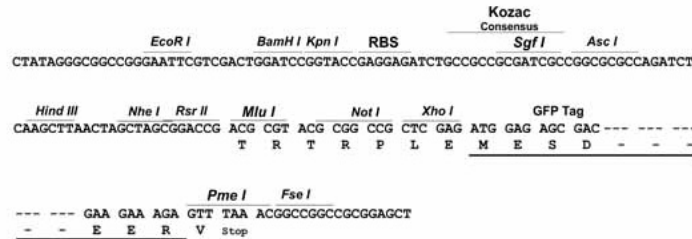
TRTRPLE - GFP Tag - V

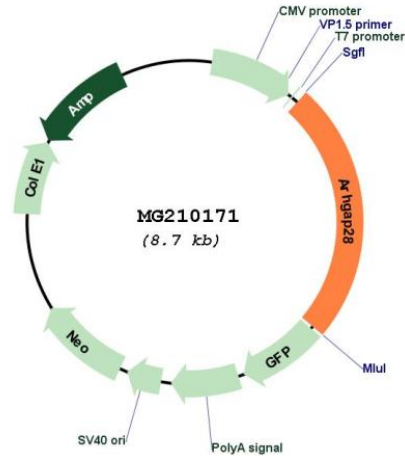
Restriction Sites:

SgfI-MluI

Cloning Scheme:

Cloning sites used for ORF Shutting:



Plasmid Map:


ACCN:	BC066788
ORF Size:	2121 bp
OTI Disclaimer:	The molecular sequence of this clone aligns with the gene accession number as a point of reference only. However, individual transcript sequences of the same gene can differ through naturally occurring variations (e.g. polymorphisms), each with its own valid existence. This clone is substantially in agreement with the reference, but a complete review of all prevailing variants is recommended prior to use. More info
OTI Annotation:	This clone was engineered to express the complete ORF with an expression tag. Expression varies depending on the nature of the gene.
Components:	The ORF clone is ion-exchange column purified and shipped in a 2D barcoded Matrix tube containing 10ug of transfection-ready, dried plasmid DNA (reconstitute with 100 ul of water).
Reconstitution Method:	<ol style="list-style-type: none"> 1. Centrifuge at 5,000xg for 5min. 2. Carefully open the tube and add 100ul of sterile water to dissolve the DNA. 3. Close the tube and incubate for 10 minutes at room temperature. 4. Briefly vortex the tube and then do a quick spin (less than 5000xg) to concentrate the liquid at the bottom. 5. Store the suspended plasmid at -20°C. The DNA is stable for at least one year from date of shipping when stored at -20°C.
RefSeq:	BC066788.1
RefSeq Size:	3710 bp
RefSeq ORF:	2123 bp

Locus ID: 268970
Cytogenetics: 17 E1.1-E1.2
Gene Summary: GTPase activator for the Rho-type GTPases by converting them to an inactive GDP-bound state.[UniProtKB/Swiss-Prot Function]