

Product datasheet for **MG210151**

Lca5 (NM_027448) Mouse Tagged ORF Clone

Product data:

Product Type:	Expression Plasmids
Product Name:	Lca5 (NM_027448) Mouse Tagged ORF Clone
Tag:	TurboGFP
Symbol:	Lca5
Synonyms:	4930431B11Rik; 5730406O13Rik; AV274874; ORF64
Mammalian Cell Selection:	Neomycin
Vector:	pCMV6-AC-GFP (PS100010)
E. coli Selection:	Ampicillin (100 ug/mL)



[View online »](#)

ORF Nucleotide
Sequence:

>MG210151 representing NM_027448
 Red=Cloning site Blue=ORF Green=Tags(s)

TTTTGTAATACGACTCACTATAGGGCGGCCGGGAATTCGTCGACTGGATCCGGTACCGAGGAGATCTGCC
 GCCCGCATCGCC

ATGGGGGAAAGAGCCCGAAGTCCAGATATTGAACAAGGAAAAAAGGAGGCAAACACCCATACTCTCATT
 ATTCGCTGACCTTGGGTCTCACACAGTCTCTGGCCCTCATCACCTGTCAACACGACGCCATGTGC
 CAGTACTAGGGAGAAGAATCCCAAAAGACACTTGTGAGACAACCAAGTGCATCACCAACCGTTAGGAAA
 GTAAGTCTAAGGCTGTACCCAGCAAAAAGGGCATCCGAGTGGGATTTCCGGTCCCAAGCCTCAACAGAG
 AGCCACTTCGAAAGATCCAGATATCGTAACAAAGCGGGTTCTTTCTGCCAGACTTCTGAAAATCAACGA
 GCTGCAGAACGAAGTGTGAGAACTACAGGTCAAGTTAGCCAGCTGTCAAAGAGAACAAGGCTTTGAAA
 AGCCTTCAGTATCGTCAGGAGAAAGCGCTGAATAAGTTTGAAGATGCGGAGAACGAGATCTCACAACCTA
 TACACCGCCATAACAATGAGATTACTGCGCTCAAAGAACGCTTACGAAAACTCAGGAGAAGGAGCGGGC
 GACAGAGAAAAGAGTGAAGAGACAGAAGTGAACATTTTAGGACGAAATTTTCTTACAGAAAAGTAAA
 AAGATCTCCGAGGCCAGACACCTACCGGAGCGAGACGATTTGGCCAAGAACTGGTTCCGGCAGAGTTAA
 AATTAGATGACACGGAGAGAAAGATTAAGGAGCTATCGAAGAACCTGGAGCTGAGCACGAACAGTTTCCA
 GCGGCAGCTGCTCGTGAAGGAAAAGAGCATTGAGGCTTACGATGAAAATAAAGTTCTTCAAAAGGAG
 CTGCAGCGGCTCCATCACAAGCTCAAGGAAAAGGAGAAAGAAATTGGATATAAAAAACATCTATGCTAATC
 GCCTGCCCAATCCTCTCAAAGAAAAGAGAAAAGAAATCGAAAGGAAACATGTATCCTGCCAGAGTGACTT
 TACAGACCAGTGTACAAAAGGAGTACAGACCGCTGAAGACTTTGAGCTGGAGGACTTTCTTTTACAGCC
 CAGACAGTTCTCTGCTATGAAAACAGATGGGATGAACCAAGATATCTCTCTTGTACCTGGAGTACCAGG
 ATCTCAACAACATGGATCAGAGATGCTAAGTTCAAGTGTGGGACAAGAAGGAAAGTATGATGAAGATGA
 GGACCATGCTCTGCAAAGCAGGAGGCCAGGAAGCCTGAGAGTGAATGGGCAAGAGAAGAACTTGATAAG
 GTGAAAGGCAAGTCAAGTCTGCTAGGGAGAGCAGAGAAGCTGGCATTGGAAGCTGGGAGATTTCCCAACGG
 AAAATTATCAAGCTCAGTCTGTCGATAAATTCGAAGATGAGGCAGAAAGACTAAAGACAGAAATGCTCCT
 TGCCAAACTGAACGAAATCAACAAGAAGTCCAAGATCCTCAGAACCTCGGGCGGCCCTTTGCCATTG
 CTGCCCAACTTCGAATCCAAGTGCCTCTCCAGACAGAAGTACCAGACCTTACTCGTTCCTCCGAGTCT
 TAGACCGATCGTTAATGGACAACACTTGACGACTTGAGTTTTTAACTCCCAGGGGAGAAGGCGGGAG
 TCCAGGACCGATCCGAAGTCCAGGACAGATCCGAAGTCCAGCCCTCTAGATGAGTTTTTCAATTTGGTAGC
 TATGTGCCTTCGTTTGGAAAAACATTAGGGAAGTCAAATCCACCTAGCCAAAAAAGTAGCCTTTTAGATT
 TCCAAAGCAACAGTTCTGAAAGCCGAGTAAAGACAGTCTTGATTTAATGTCGAGGAAAGAGAAAAAGGC
 GACTCTGATGGAGCAGCTGTTTGGCCCCAGCGCCAGCAACACCAGTGTCTCCTCCAAGAGCACCGACCCA
 CACTTCCCTGCTGCCAGCAGAGGTGACATGGACCTCTTCATTTCTCTCTGGGGACAGAAACAGCAGAG
 TCCGGGAGCCTGGCGATGAAGAGGAAGACCTTTTCTCAGGGAAGGAAGAAGTTTTAATCCAAATAGACA
 CCGGTTGAAGCACGCAAGCAATAAGCCAACAGTACGGCCGTTGACTCTGTTGATGAGGACATTGAAGAG
 GTTACCCTCAGA

ACGCGTACGCGGCCGCTCGAG - GFP Tag - GTTTAA

Protein Sequence: >MG210151 representing NM_027448
 Red=Cloning site Green=Tags(s)

MGERARSPDIEQGGKGGKHPYSHYSSDLGSSPQSSGPSSPVNTTPCASTREKNPKRHLSDNQVHHPTVRK
 VSPKAVPSKKGIRVGFERSQSLNREPLRKDPDIVTKRVL SARLLKINELQNEVSELQVLAQLLKENKALK
 SLQYRQEALNKFEDAENEISQLIHRHNNEITALKERLRKSQEKERATEKRVKETE GELFRTKFSLQKLLK
 KISEARHLPERDDLAKKLVSAELKLD DTERKIKEL SKNLELSTNSFQRQLLAERKRAFEAYDENKVLQKE
 LQRLHHKLEKEKELDIKNIYANRLPKSSPKKEKEIERKHVSCQSDFTDQCTKGVQTAEDFELEDFPFTA
 QTVLCYENRWDEPEYLSYLEYQDLNKHGSEM LSSVLGQEGKYDEDEDPCSAKQEARKPESEWAREELDK
 VKGKSALLGRAEKLAL EAGRFPTENYQAQSVDFEAEERLKTEMLLAKLNEINKELQDPQNLGRAPLPL
 LPNFESKLSHSPDRSTRPYSPESLDRSFDNGHLQDL SFLTPRGE GSGPGPIRSPGQIRSPAPLDEF SFGS
 YVPSFGKTLGKSNPPSQKSSLLDFQSNSSSESPSKDSL DMSRKEKATLMEQLFGPSASNTSVSSKSTDP
 HFPAASRGMDPLHFLSGDRNSRVREPGDEEEDLFLREGRSFNPNRHLKHASNKPTVTAVDSVDEIDEE
 VTLR

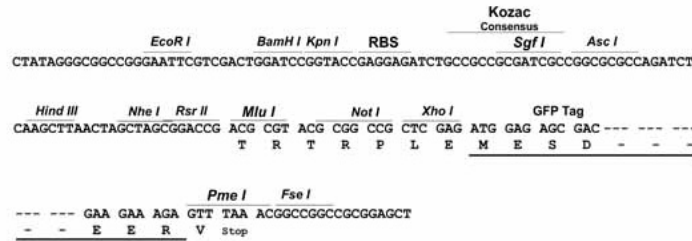
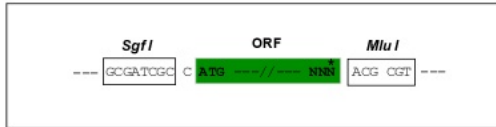
TRTRPLE - GFP Tag - V

Restriction Sites:

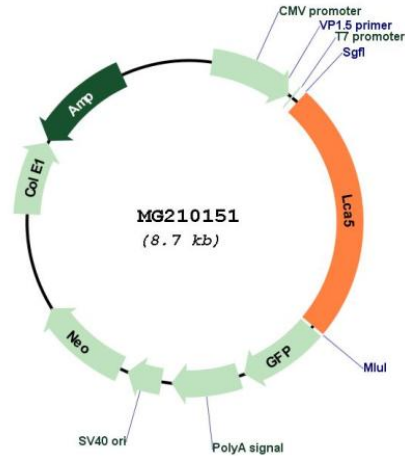
SgfI-MluI

Cloning Scheme:

Cloning sites used for ORF Shutting:



Plasmid Map:



ACCN: NM_027448

ORF Size: 2112 bp

OTI Disclaimer: The molecular sequence of this clone aligns with the gene accession number as a point of reference only. However, individual transcript sequences of the same gene can differ through naturally occurring variations (e.g. polymorphisms), each with its own valid existence. This clone is substantially in agreement with the reference, but a complete review of all prevailing variants is recommended prior to use. [More info](#)

OTI Annotation: This clone was engineered to express the complete ORF with an expression tag. Expression varies depending on the nature of the gene.

Components: The ORF clone is ion-exchange column purified and shipped in a 2D barcoded Matrix tube containing 10ug of transfection-ready, dried plasmid DNA (reconstitute with 100 ul of water).

Reconstitution Method:

1. Centrifuge at 5,000xg for 5min.
2. Carefully open the tube and add 100ul of sterile water to dissolve the DNA.
3. Close the tube and incubate for 10 minutes at room temperature.
4. Briefly vortex the tube and then do a quick spin (less than 5000xg) to concentrate the liquid at the bottom.
5. Store the suspended plasmid at -20°C. The DNA is stable for at least one year from date of shipping when stored at -20°C.

RefSeq: [NM_027448.1](#), [NP_081724.1](#)

RefSeq Size: 4235 bp

RefSeq ORF: 2115 bp

Locus ID: 75782
UniProt ID: [Q80ST9](#)
Cytogenetics: 9 E2
Gene Summary: Involved in intraflagellar protein (IFT) transport in photoreceptor cilia.[UniProtKB/Swiss-Prot Function]