

Product datasheet for **MG210149**

Shkbp1 (NM_138676) Mouse Tagged ORF Clone

Product data:

Product Type:	Expression Plasmids
Product Name:	Shkbp1 (NM_138676) Mouse Tagged ORF Clone
Tag:	TurboGFP
Symbol:	Shkbp1
Synonyms:	B930062H15Rik; Sb1
Vector:	pCMV6-AC-GFP (PS100010)
E. coli Selection:	Ampicillin (100 ug/mL)
Cell Selection:	Neomycin



[View online »](#)

ORF Nucleotide
Sequence:

>MG210149 representing NM_138676
Red=Cloning site Blue=ORF Green=Tags(s)

TTTTGTAATACGACTCACTATAGGGCGGCCGGGAATTCGTCGACTGGATCCGGTACCGAGGAGATCTGCC
GCC**CGATCGCC**

ATGGCCGTCGCGACGACTGCAGTGGAGGGGTCCCGAGTCGGGGAGCACCCGGGGAAGTATTATCTGA
ACGTAGGGGGCAAGCGGTTCACTACCTCTCGCCAGACGCTTACCTGGATCCCAGACTCCTTCTTTCCAG
TCTTTTGAAGCGCATCTCAACCCTGAAAGATGAGACCGGAGCTATCTTCATCGACCGGGACCCACC
GTCTTTGCCCCATCCTTAATTTCTGCGGACCAAGAGTTAGATCCCAGGGGTGCCATGGTCCAGCC
TCCTCCATGAAGCCAATTCTACGACTCACTCCACTGGTTCGTCGCCTGCAGGTGAGGGAAGAGTTGGA
TCGATCTTCTGCGAAATGTCCTTTCAATGGTTATCTACCTCCTCCAGTGTCCAGTGAAGCGGCGA
AACCGGCACAGCTGGTGGGGCCCAAGAAATAGGGGGACGCCAGCCCTGTTCCAGCGGAGCAACACGA
TGCCCCCAACTTGGGTAAATGCAGGGCTGCTGGGCCGAATGTTAGATGAGAGAGCACCTCCATCCCCATC
AGGCCAACAGAGGAGCCAGGGATGGTGCCTGGTGTGGTACCACAACCTGGATTGTGTGGCATAT
ACCCACTTTCTCGTCTGTATAGGTTGAAGGAAGCCTCGGGCTGGCAGCTTGATTCTCCAGCCCGGCC
TGGACTGGCCATCGAGCGCCTGGCTCTTGCAGGCTCGGGTGTGGCGGTGCTCCGGGTGAGCATGACAA
GATGGTGGCTGCAGCTACTGGCAGCGAGATCCTTCTGTGGGCCCTACAAGCACAAGTGGTGGCTCTGAG
ATAGGTGTCTTCCACTGGGTGTGCCAGTGGAGGCCTGTTCTTTGTTGGGAATCAGTCAATGCCACAA
GTCACACAGGGCGCATCGGTGTCTGGAACGCTGTGACCAAGCACTGGCAGGTCCAGGAGTCCAGCCTAT
CAGGAGCTATGATGCAGCCGGCTCCTTCTCCTCCTGGGCTGCAGCAATGGTCCATCTATTATGTAGAT
GTGCAGAAATCCCCCTGCGGATGAAGGACAACGATCTCCTTGTGAGTGTGACAGTGGGAAGTGGATTGAGAT
AGGATGGGGTCACCGCCCTCAGGGTCTACCTCACCCCAAGACCAGTGACAGTGGGAAGTGGATTGAGAT
TGCCATGGCACCCAGCTCCGGGGTGGTGCAGGTCATTGTGCAGCACCTGAGACGGTGGGCTCGGGACCC
CAGCTCTTCCAGACCTTCAAGTGTGACCGCAGCCCGGTCACTAAGATCATGCTGTGAGAGAAGCATCTTA
TCTCTGTGTGCGGACAACAACCATGTTCCGACGTGGTCTGTGACCCGCTTTCGAGGCATGATCTCCAC
CCAGCCTGGTTCCACTCCGCTGGCATCCTTCAAGATCCTGGCGCTGGAATCTGTTGATGGGCTCGGTGGC
TGCAGTGTGGCAATGACATTGGTCCCTATGGTGAACGGGATGACCAGCAGGTGTTTATCCAGAAAGTGG
TGCCAAATGCCAGTCAGTATTTGTGCGTCTCTTCCACTGGGAGCGGGTGTGTTCTGTGCGCTCGGT
GGATGGGTCTCCACGACTGCCTTACAGTGTGGAGTGTGAGGGCTCCAGGCGGCTGGGCTCCAGACCC
CGACGTTACCTGCTCACTGGTCAAGCCACGGCAGCCTGGCCATGTGGGACCTGACCACTGCCATGGATG
GCCTGGGCCAACTCCTGCAGGCGGCTGACAGAAGAAGAGCTGATGGACCAACTGGAGCAATGTGAGCT
GAGCCATTGGCTTCTCTCGGGCTCTTTCCCAAGCCCTCACCCAGGACCTCTTACCAGTCTCCAC
TCAGCCTCCAGCAACACCTCCCTGTATGGCCCCAGAGGGAGCCCCAGCCACCACAGGCAGAGGCCCGTC
GCCCGGGGCAGGAAGCTTCGTGGATCGGTGTGAGGAAGTGGCAAGGGGTGCGCCAGAGCTCAGATGGCC
GCCAACACCAGCCCTCGACCCTCCACCAGTCTTGGGAATCCCCTGACAGCTCTCAAGAAAACCTTAAAC
GAAACTTCCTT

ACGCGTACGCGGCCGCTCGAG - GFP Tag - GTTTAA

Protein Sequence: >MG210149 representing NM_138676
 Red=Cloning site Green=Tags(s)

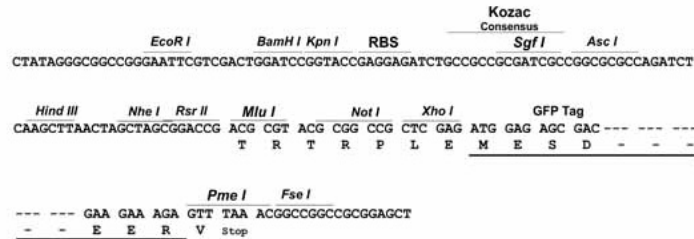
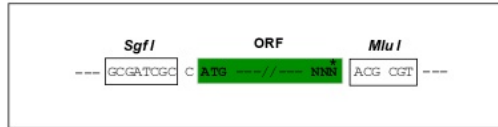
MAVATTAVEGVPSRGAPGEVIHLNVGGKRFSTSRQTLTWIPDSFFSLLSGRISTLKDETGAIFIDRDPT
 VFAPILNFLRTKELDPRGVHGSSLLHEAQFYGLTPLVRRQLQVREELDRSSCGNVLFNGYLPPPVPVKRR
 NRHSLVGPQQIGGRPAPVRRSNTMPPNLGNAGLLGRMLDERAPPSPSQPEEPMVRLVCGHHNWIAYAY
 THFLVCYRLKEASGWQLAFSSPRLDWPILERLALAAARVLGGAPGEHDKMVAATGSEILLWALQAQGGSE
 IGVFHLGVPVEALFFVGNQLIATSHTGRIGVWNAVTKHWQVQEVQIPITSYDAAGSFLLLGCSNGSIYYVD
 VQKFLRMKDNDLLVSELYRPAEDGVTALSVYLTPKTSDSGNWIEIAYGTSSGVVRVIVQHPETVSGSP
 QLFQTFVHRSVPTKIMLSEKHLISVCADNNHVRTWSVTRFRGMISTQPGSTPLASFKILALESDVGLGG
 CSAGNDIGPYGERDDQQVFIQKVVPNASQLFVRLSSTGQRVCSVRSVDGSPPTAFTVLECEGSRRLGSRP
 RRYLLTGQANGLAMWDLTTAMDGLGQTPAGGLTEEELMDQLEQCELSPLASSRGSFPPSPRSTLSLH
 SASSNTSLYGPRGSPPPQAEARRRGAGSFVDRQCQLARGAPELRWPPTPAPRPSTSLGNPLTALKKTLN
 ETSF

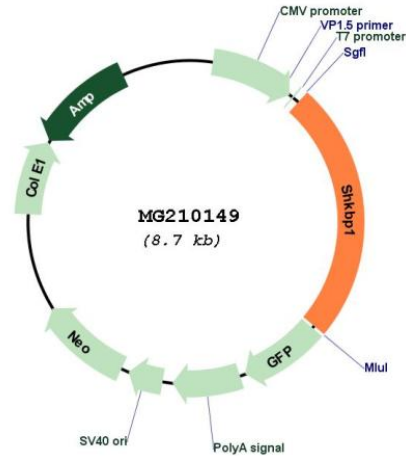
TRTRPLE - GFP Tag - V

Restriction Sites: SgfI-MluI

Cloning Scheme:

Cloning sites used for ORF Shuttling:



Plasmid Map:


ACCN:	NM_138676
ORF Size:	2112 bp
OTI Disclaimer:	The molecular sequence of this clone aligns with the gene accession number as a point of reference only. However, individual transcript sequences of the same gene can differ through naturally occurring variations (e.g. polymorphisms), each with its own valid existence. This clone is substantially in agreement with the reference, but a complete review of all prevailing variants is recommended prior to use. More info
OTI Annotation:	This clone was engineered to express the complete ORF with an expression tag. Expression varies depending on the nature of the gene.
RefSeq:	NM_138676.2 , NP_619617.2
RefSeq Size:	2347 bp
RefSeq ORF:	2115 bp
Locus ID:	192192
Gene Summary:	Inhibits CBL-SH3KBP1 complex mediated down-regulation of EGFR signaling by sequestration of SH3KBP1. Binds to SH3KBP1 and prevents its interaction with CBL and inhibits translocation of SH3KBP1 to EGFR containing vesicles upon EGF stimulation (PubMed:21830225).[UniProtKB/Swiss-Prot Function]