

Product datasheet for **MG210148**

Slc26a1 (NM_174870) Mouse Tagged ORF Clone

Product data:

Product Type:	Expression Plasmids
Product Name:	Slc26a1 (NM_174870) Mouse Tagged ORF Clone
Tag:	TurboGFP
Symbol:	Slc26a1
Synonyms:	Sat1
Mammalian Cell Selection:	Neomycin
Vector:	pCMV6-AC-GFP (PS100010)
E. coli Selection:	Ampicillin (100 ug/mL)



[View online »](#)

ORF Nucleotide
Sequence:

>MG210148 representing NM_174870
Red=Cloning site Blue=ORF Green=Tags(s)

TTTTGTAATACGACTCACTATAGGGCGGCCGGGAATTCGTCGACTGGATCCGGTACCGAGGAGATCTGCC
GCC**CGGATCGCC**

ATGGATGCTTCTCCTGAGCCCCAACAGAAGGGTGGGACACTGGTACTGGTCCGACGGCAGCCTCCTGTGT
CCCAGGGCTTGCTGGAAACACTGAAGGCCAGGCTGAAGAAGAGCTGCACCTGCAGTATGCCATGTGCTCA
GGCTCTGGTGACGGTCTGTTTCCTGCCATACACTGGCTGCCCCAGTACCGCCTTAAGGAATACCTAGCA
GGTGATGTCATGTCAGGATTGGTCATTGGCATTATCCTGGTGCCACAGGCCATAGCCTACTCACTGCTGG
CTGGGTTACAACCCATCTATAGCCTCTACACTTCTTCTTTGCCAACCTGATCTACTTCTCATGGGCAC
CTCCCGCCATGTTAATGTGGGCATCTTCAGCCTGCTGTGTCTCATGGTGGGTGAGTGGTGGACAGAGAA
CTCCAGTTGGCTGGCTTTGACCCTTCCAGGATTCTCTAGGGCCCAAGAACAATGACAGCACCCCTCAACA
ACTCAGCTACAACACTGATCATTGGGCTACAGGACTGCAGACGGGACTGCTATGCCATTCGGGTTGCCAC
TGCCCTTACTCTGATGGCCGGGCTTTATCAGGTCCTCATGGGTATCCTCCGGCTGGGCTTCTGTGTCTACC
TATCTCTCACAACCACTGCTCGATGGCTTTGCTATGGGAGCTTCTGTGACCATCTTGACTTCTCAGGCAA
AACACATGCTGGGTGTGCAGATCCCTCGGCACCAAGGGCCTAGGCATGGTGGTCCACACATGGTTAGCTT
GCTGCAGAATGTGGGACAGGCCAACATATGTGATGTGGTCACCACTGCCCCTGTGCCTAGGAGTGTGCTG
GCAGCTAAGGAACTCTCAGATCGCTACCGACACCGTCTGAAGGTGCCAATACCCACAGAGTTATTTGTTA
TTGTGGTGGCCACAATTGTGCCATTTTGGACAGCTCCATACACGGTTTGACTCGAGGGTGGCTGGCAA
CATTCCCACTGGTTTTGTGGCCCCACAGGTACCAGACCCTAAGATAATGTGGCGTGTGGCCCTGGATGCC
ATGTCCCTGGCCCTCGTGGGCTCAGCCTTCTCCATCTCCTTGGCAGAAATGTTTGCCCGTAGTCATGGCT
ACTCTGTCAAGTCCAACCAAGAGCTGCTAGCTGTGGGCTGCTGCAATGTGCTGCCTGCCTTCTTCCACTG
TTTTGCCACTAGTGTGCTCTGTCCAAAACCTCTGGTGAAGATAGCCACTGGCTGCCAGACCCAGTTGTCC
AGTGTGGTCAGTGCCGCTGTGGTGTGCTGGTGTGCTGGTGTGCTGGCTCCACTGTTTCATGATCTGCAGC
GATGTGTGCTAGCTTGTATCATTGTTGTGAGCCTGCGGGGGGCGCTGCGCAAGGTGAAGGATCTCCACACA
ACTTTGGCGGCTAAGCCCTGCCGATGCACTGGTCTGGGTGGTACTGCAGCTACCTGTGTGCTAGTCAGC
ACCGAGGCTGGACTATTAGCTGGAGTGTCTTCTCCCTGCTTAGCCTGGCAGGCCGTACACAGCCTCCAC
GGGCTGCCCTTCTGCCGAATTGGAGACTCCACCTTCTATGAGGATGCTGCTGAATTTGAGGGCCTCCT
GCCCCACCTGAGGTGCGAGTGTTCGGTTTACAGGTCCACTTTACTACGCCAACAGGACTTCTTCTCT
CGGTCTCTACAGACTCACAGGTTGGATGCAGGGCACTCAGCCACCAGGAAGGATCAGGGCCCGGAGG
TGGGTGTCAGTAACAGAAGTCTTGTGATGGCAAGGATCTGGGTTCAAGTGAAGTGGGGCTGGGCTGGT
GGTACCCCTGGCATTGTTTCCACACAGTGGTCACTGACTGTGCACCACTGCTGTTCTGGATGTGGCT
GGCATGGCCACATTGAAAGACCTCCGCAGAGACTACAGGGCCTTGGACATCACCTGCTTCTGGCTTGT
GCAGTCCCTCGGTGAGAGACACGTTGAGAAAAGGGGGCTTCTTGGGGAAGAACAGGGAGCTGAAAATGA
GCTGCTATTCCCAGTGTGCACAGTGTGTGGAGGCTGCATGTGCCCGCCGTGAGGAGCTGCTGGCTGCT
GACTCTGCCCTC

ACGCGTACGCGGCCGCTCGAG - GFP Tag - GTTTAA

Protein Sequence: >MG210148 representing NM_174870
 Red=Cloning site Green=Tags(s)

```

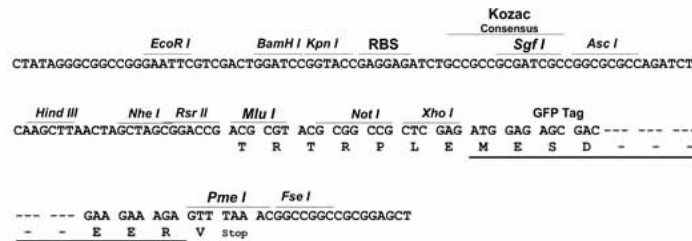
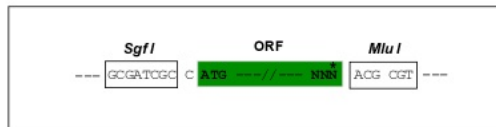
MDASPEPQQKGGTLVLRQPVSQGLLETLKARLKKSCSCMPCAQALVQGLFP AIHWLPQYRLKEYLA
GDVMSGLVIGIILVPQAIAYSLLAGLQPIYSLYTSFFANLIYFLMGT SRHVNVGIFSLCLMVGQVVDRE
LQLAGFDPSQDSLGPKNNDSTLNN SATTLLIIGLQDCRRDCYAIRVATAL TLMAGLYQVLMGILRLGFVST
YLSQPLLDGFAMGASVTILTSQAKHMLGVQIPRHQGLGMVVHTWLSLLQNVGQANICDVVTSALCLGVLL
AAKELSDRYRHRLKVPIPEL FVIIVVATIVSHFQGLHTRFDSRVAGNIPTGFVAPQVPDPKIMWRVALDA
MSLALVGSAFSISLAEMFARSHGYSVSANQELLA VGCCNVLPAFFHCFATSAALSKTLVKIATGCQTQLS
SVYSAAVLLVLLVLA PLFHDLRQCVLACII VVSLRGALRKVKDLPQLWRLSPADALVWVATAATCVLVS
TEAGLLAGVFFSLLSLAGRTQRPR AALLARIGDSTFYEDAAEFEGLLPPPEVRFVFRFTGPLY YANKDFFL
RSLYRLTGLDAGHSATRKDQGP EVGVSNRSLVDGKDLGSVSSGAGLVVPLAFGFHTVVIDCAPLLFLDVA
GMATLKDLRRDYRALDITLLLACCSPSVRDTLRKGGFLGEEQGAENELLFPSVHSAVEAACARREELLAA
DSAL
  
```

TRTRPLE - GFP Tag - V

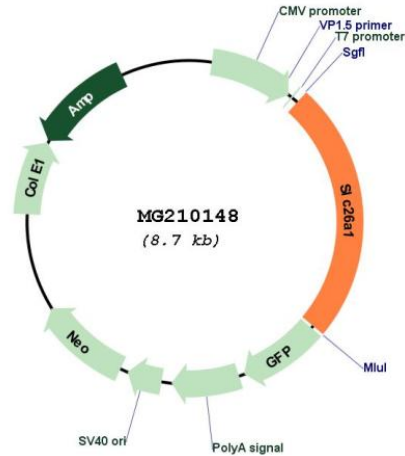
Restriction Sites: SgfI-MluI

Cloning Scheme:

Cloning sites used for ORF Shutting:



Plasmid Map:



ACCN: NM_174870

ORF Size: 2112 bp

OTI Disclaimer: The molecular sequence of this clone aligns with the gene accession number as a point of reference only. However, individual transcript sequences of the same gene can differ through naturally occurring variations (e.g. polymorphisms), each with its own valid existence. This clone is substantially in agreement with the reference, but a complete review of all prevailing variants is recommended prior to use. [More info](#)

OTI Annotation: This clone was engineered to express the complete ORF with an expression tag. Expression varies depending on the nature of the gene.

Components: The ORF clone is ion-exchange column purified and shipped in a 2D barcoded Matrix tube containing 10ug of transfection-ready, dried plasmid DNA (reconstitute with 100 ul of water).

Reconstitution Method:

1. Centrifuge at 5,000xg for 5min.
2. Carefully open the tube and add 100ul of sterile water to dissolve the DNA.
3. Close the tube and incubate for 10 minutes at room temperature.
4. Briefly vortex the tube and then do a quick spin (less than 5000xg) to concentrate the liquid at the bottom.
5. Store the suspended plasmid at -20°C. The DNA is stable for at least one year from date of shipping when stored at -20°C.

RefSeq: [NM_174870.2](#), [NP_777359.2](#)

RefSeq Size: 3821 bp

RefSeq ORF: 2115 bp

Locus ID: 231583

UniProt ID: [P58735](#)

Cytogenetics: 5 F

Gene Summary: Mediates sulfate transport with high affinity (PubMed:12217875, PubMed:27210743). Mediates oxalate transport (PubMed:12217875). Mediates bicarbonate transport (PubMed:27210743). Does not accept succinate as cosubstrate (By similarity). [UniProtKB/Swiss-Prot Function]