

## Product datasheet for **MG210147**

### **Lca5 (BC052060) Mouse Tagged ORF Clone**

#### **Product data:**

Product Type:	Expression Plasmids
Product Name:	Lca5 (BC052060) Mouse Tagged ORF Clone
Tag:	TurboGFP
Symbol:	Lca5
Synonyms:	4930431B11Rik; 5730406O13Rik; AV274874; ORF64
Mammalian Cell Selection:	Neomycin
Vector:	pCMV6-AC-GFP (PS100010)
E. coli Selection:	Ampicillin (100 ug/mL)



[View online »](#)

ORF Nucleotide  
Sequence:

>MG210147 representing BC052060  
Red=Cloning site Blue=ORF Green=Tags(s)

TTTTGTAATACGACTCACTATAGGGCGGCCGGAATTCGTCGACTGGATCCGGTACCGAGGAGATCTGCC  
GCC**CGCATCGCC**

ATGGGGGAAAGAGCCCGAAGTCCAGATATTGAACAAGGAAAAAAGGAGGCAAACACCCATACTCTCATT  
ATTCGCTGACCTTGGGTCTCACCACAGTCTCTGGCCCTCATCACCTGTCAACACGACGCCATGTGC  
CAGTACTAGGGAGAAGAATCCCAAAAGACACTTGTGACACAACCAAGTGCATCACCAACCGTTAGGAAA  
GTAAGTCTAAGGCTGTACCCAGCAAAAAGGGCATCCGAGTGGGATTTCCGGTCCCAAGCCTCAACAGAG  
AGCCACTTCGAAAGATCCAGATATCGTAACAAAGCGGGTTCTTTCTGCCAGACTTCTGAAAATCAACGA  
GCTGCAGAACGAAGTGTCAAGTACAGGTCAAGTTAGCCAGCTGTCAAAGAGAACAAGGCTTTGAAA  
AGCCTTCAGTATCGTCAGGAGAAAGCGCTGAATAAGTTTGAAGATGCGGAGAACGAGATCTCACAACTTA  
TACACCGCCATAACAATGAGATTACTGCGCTCAAAGAACGCTTACGAAAATCTCAGGAGAAGGAGCGGGC  
GACAGAGAAAAGAGTGAAGAGACAGAAGTGAAGTATTTAGGACGAAATTTTCCTTACAGAAAAGTAAA  
AAGATCTCCGAGGCCAGACACCTACCGGAGCGAGACGATTTGGCCAAGAACTGGTTTCGGCAGAGTTAA  
AATTAGATGACACGGAGAGAAAAGATTAAGGAGCTATCGAAGAACCTGGAGCTGAGCACGAACAGTTTCCA  
GCGGCAGCTGCTCGTGAAGGAAAAGAGCATTGAGGCTTACGATGAAAATAAAGTTCTTCAAAAGGAG  
CTGCAGCGGCTCCATCACAAGCTCAAGGAAAAGGAGAAAGAAATTGGATATAAAAAACATCTATGCTAATC  
GCCTGCCCAAATCCTCTCAAAGAAAAGAGAAAAGAAATCGAAAGGAAAACATGTATCCTGCCAGAGTGACTT  
TACAGACCAGTGTACAAAAGGAGTACAGACCGCTGAAGACTTTGAGCTGGAGGACTTTCTTTTACAGCC  
CAGACAGTTCTCTGCTATGAAAACAGATGGGATGAACCAGAATATCTCTCTTCTGACCTGGAGTACCAGG  
ATCTCAACAAACATGGATCAGAGATGCTAAGTTCAAGTGTGGGACAAGAAGGAAAGTATGATGAAGATGA  
GGACCCATGCTCTGCAAAGCAGGAGGCCAGGAAGCCTGAGAGTGAATGGGCAAGAGAAGAACTTGATAAG  
GTGAAAGGCAAGTCAAGCTTTGCTAGGGAGAGCAGAGAAGCTGGCATTGGAAGCTGGGAGATTTCCAAACGG  
AAAATTATCAAGCTCAGTCTGTCGATAAATTCGAAGATGAGGCAGAAAGACTAAAGACAGAAATGCTCCT  
TGCCAAACTGAACGAAATCAACAAAGAACTCCAAGATCCTCAGAACCTCGGGCGGGCCCTTTGCCATTG  
CTGCCAACTTCGAATCCAAGTGCCTCTCCAGACAGAAGTACCAGACCTTACTCGTTCGCCGAGTCTCT  
TAGACCGATCGTTAATGGACAACACTTGACAGGACTTGAGTTTTTTAACTCCCAGGGGAGAAGGCGGGAG  
TCCAGGACCGATCCGAAGTCCAGGACAGATCCGAAGTCCAGCCCCTTAGATGAGTTTTTCATTTGGTAGC  
TATGTGCCTTCGTTTGGAAAAACATTAGGGAAGTCAAATCCACCTAGCCAAAAAAGTAGCCTTTTAGATT  
TCCAAAGCAACAGTTCTGAAAGCCCGAGTAAAGACAGTCTTGATTTAATGTCGAGGAAAGAGAAAAAGGC  
GACTCTGATGGAGCAGCTGTTTGGCCCCAGCGCCAGCAACACCAGTGTCTCCTCCAAGAGCACCGACCCA  
CACTTCCCTGCTGCCAGCAGAGGTGACATGGACCTCTTCATTTCTCTCTGGGGACAGAAACAGCAGAG  
TCCGGGAGCCTGGCGATGAAGAGGAAGACCTTTTCTCAGGGAAGGAAGAAGTTTTAATCCAAATAGACA  
CCGGTTGAAGCACGCAAGCAATAAGCCAACAGTACGGCCGTTGACTCTGTTGATGAGGACATTGAAGAG  
GTTACCCTCAGA

**ACGCGT**ACGCGGCCGCTCGAG - GFP Tag - GTTTAA

Protein Sequence: >MG210147 representing BC052060  
 Red=Cloning site Green=Tags(s)

MGERARSPDIEQGGKGGKHPYSHYSSDLGSSPQSSGPSSPVNTTPCASTREKNPKRHLSDNQVHHPTVRK  
 VSPKAVPSKKGIRVGFERSQSLNREPLRKDPDIVTKRVL SARLLKINELQNEVSELQVLAQLLKENKALK  
 SLQYRQEAKLNKFEDAENEISQLIHRHNEITALKERLRKSQEKERATEKRVKETE GELFRTKFSLQKLLK  
 KISEARHLPERDDLAKKLVSAELKLD DTERKIKEL SKNLELSTNSFQRQLLAERKRAFEAYDENKVLQKE  
 LQRLHHKLEKEKELDIKNIYANRLPKSSPKKEKEIERKHVSCQSDFTDQCTKGVQTAEDFELEDFPFTA  
 QTVLCYENRWDEPEYLSYLEYQDLNKHGSEMLSSVLGQEGKYDEDEDPCSAKQEARKPESEWAREELD  
 VKGKSALLGRAEKLALAEGRFPTENYQAQSVDFEAEERLKTEMLLAKLNEINKELQDPQNLGRAPLPL  
 LPNFESKLSHSPDRSTRPYSFPESLDRSFDNGHLQDL SFLTPRGE GSGPGPIRSPGQIRSPAPLDEF SFGS  
 YVPSFGKTLGKSNPPSQKSSLLDFQSNSSSESPKDSL DMSRKEKATLMEQLFGPSASNTSVSSKSTDP  
 HFPAASRGMDPLHFLSGDRNSRVREPGDEEEDLFLREGRSFNPNRHLKHASNKPTVTAVDSVDEIDEE  
 VTLR

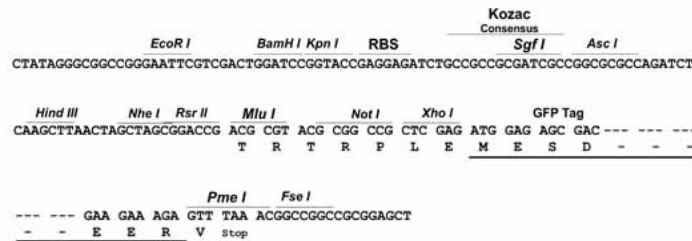
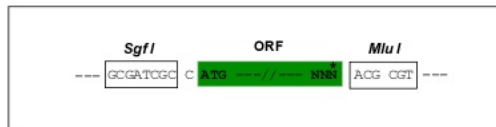
TRTRPLE - GFP Tag - V

Restriction Sites:

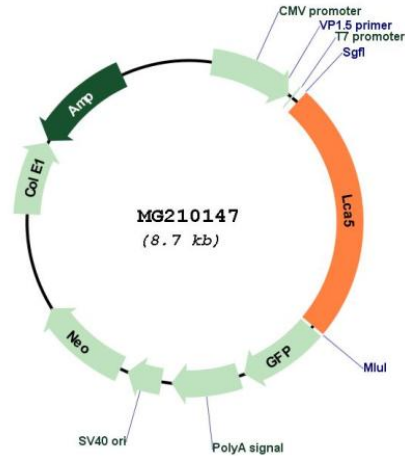
SgfI-MluI

Cloning Scheme:

Cloning sites used for ORF Shutting:



## Plasmid Map:



ACCN: BC052060

ORF Size: 2112 bp

OTI Disclaimer: The molecular sequence of this clone aligns with the gene accession number as a point of reference only. However, individual transcript sequences of the same gene can differ through naturally occurring variations (e.g. polymorphisms), each with its own valid existence. This clone is substantially in agreement with the reference, but a complete review of all prevailing variants is recommended prior to use. [More info](#)

OTI Annotation: This clone was engineered to express the complete ORF with an expression tag. Expression varies depending on the nature of the gene.

Components: The ORF clone is ion-exchange column purified and shipped in a 2D barcoded Matrix tube containing 10ug of transfection-ready, dried plasmid DNA (reconstitute with 100 ul of water).

Reconstitution Method:

1. Centrifuge at 5,000xg for 5min.
2. Carefully open the tube and add 100ul of sterile water to dissolve the DNA.
3. Close the tube and incubate for 10 minutes at room temperature.
4. Briefly vortex the tube and then do a quick spin (less than 5000xg) to concentrate the liquid at the bottom.
5. Store the suspended plasmid at -20°C. The DNA is stable for at least one year from date of shipping when stored at -20°C.

RefSeq: [BC052060.1](#)

RefSeq Size: 4185 bp

RefSeq ORF: 2114 bp

**Locus ID:** 75782  
**Cytogenetics:** 9 E2  
**Gene Summary:** Involved in intraflagellar protein (IFT) transport in photoreceptor cilia.[UniProtKB/Swiss-Prot Function]