

## Product datasheet for **MG210146**

### Clip4 (BC035226) Mouse Tagged ORF Clone

#### Product data:

Product Type:	Expression Plasmids
Product Name:	Clip4 (BC035226) Mouse Tagged ORF Clone
Tag:	TurboGFP
Symbol:	Clip4
Synonyms:	1700024K14Rik; 1700074B05Rik; 4833417L20Rik; 5830409B12Rik; Rsnl2
Mammalian Cell Selection:	Neomycin
Vector:	pCMV6-AC-GFP (PS100010)
E. coli Selection:	Ampicillin (100 ug/mL)



[View online »](#)

**ORF Nucleotide Sequence:**

>MG210146 representing BC035226  
 Red=Cloning site Blue=ORF Green=Tags(s)

GACGTTGTATACGACTCCTATAGGGCGGCCGGGAATTCGTCGACTGGATCCGGTACCGAGGAGATCTGCC  
 GCCGGCGCGCC

ATGACCATAGAGGACCTCCCGATATTCATTGGAAGGAAGCTCTCTGATTGGAAGATACCCATTTTAT  
 TCACAGGCTCAGATACATCTGTTATCTTCTCCATTTCTGCAGCACCGATGCCTTCGACTGCGAGTTTTT  
 TTTCTTTGACCCTAACGATGCATCATGCCAGGAAATTCCTTCGACCCCAAACTTCAGTCTCAGAATTA  
 TTTGCTATTTAAGACAGTGGGTTCTCAGGTCCAGCAGAACATAGACATTATTGGAAATGAGATTCTTA  
 AGAGAGGCTGCAATGTGAACGATAGAGACGGACTGACGGACATGACTCTGCTACATTACACTTGCAAGTC  
 TGGGGCTCATGGCATCGGTGATATTGAGACAGCTGTAAAATTTGCTGCTCAACTTATAGACCTGGGAGCA  
 GACGCGAGTTTGGGAGTCGCTGGACGAACATGAACGCTTTCATTACGCTTCGACTTTGATGTCCCGAG  
 AGCTTATCAGGGTGATTTTGAAGACATCGAAACAAAAGATGTGGATGCCACTTGCAGCGACTTTAATTT  
 TGGGACAGCCCTGCACATTGCAGCACATAAATTGTGTGCAGGAGCCGTGAAAACCTTGTGGAGCTGGGA  
 GCGAACCTGCCTTTAGGAATGACAAAGGGCAGATCCCTGCAGAAGTTGTTCCAGACCCAGTGGACATGC  
 CTCTGGAGATGGCCGATGCTGCAGCGATCGCGAAGGAAATCAAACAGATGCTCTTGGATGCGGTGCCTCT  
 GCCCTGTACCAGCGCTAAGGCCGTGCTTCCAACTCCGATCACACCACCAGCAGGGCCATGCTGACATCT  
 CTCGGCCTGAAGTTGGGGGACCGTGTGTGCATCGCAGGGCAGAAGGTTGGAACATTAAGATTTTGTGGAA  
 CAACGGAGTTTGAAGCGGGCAGTGGGCTGGCATTGAGCTGGACGAGCCAGAAGGGAAGAACAACGGCAG  
 TGTTGGGAGAGTCCAGTACTTCAAGTGTGCCCCAAATACGGTATTTTGTCTCCCTTTCAAAGATAAGT  
 AAATTAAGACGGGAGGAAGACCACACACACTCCTTCCACGAGAGCCACCCACACGCCGATCCC  
 AGAAGGTCGATGTAGCCACTTCCATCCAGATCAATTCGGGTTGACGACATCTAAAAGGAGACTGC  
 TTCTGAATCCACACTGACATTGCCTCCAGTGAAGAACCAGAACTGTAGCGGAAAATGACGCTGCCAG  
 CCTGGGTCCATGAGCAGTTCTCTCTCTCTCTCTCTGGACCACAAGCAGAGCTACCCGAAGAAGCTGA  
 CCACAAGCAGCGGTGGCAAGAAGACTCTGAGCAAAAGCCCTCTCTCCCGTCCAGAGCCAGTGTGGTTT  
 GAAATCTTCAGCCACATCTGCAGCAAAACAGTCACCATGAAGGAGCGCTCCACCTTGGAGAAAGGGTG  
 CTGGTCTAGGCCAGCGAGTAGGCACCATTAAGTTCTTTGGAACAACAACTTTGCTCCAGGGTATTGGT  
 ACGGCATAGAGCTGGAGAAGCCACGGGAAGAATGATGGTTCGGTTGGAGGTGTACAGTATTTAGTTG  
 CTCTCCGAGATATGGAATATTTGCGCCCCGTCCAGGGTACAGAGGCTATCAGATTCCCTGGATACGCTT  
 TCAGAAATATCTTCAAATAAACAGAATCACTCTTATCCTGGTTTTAGGAGAAGTTTCAGCACCACCTCTG  
 TTCTTTCTCAAAAAGAGATTAACAGGAGAAATGCTTTTGCCAAGACCAAGACCACCTTGCGCCGAGCTG  
 GAGCAGTTCACCACGGCAGGTGGTCTGGAGGGGACCGTGAAGCTCCACGAGGGTCTCAGTCTCTGCTC  
 ACAAGCTTAACGAAATGGCCACGGTATAGTACGTGGGTCCCACGGACTTTGCCTCGGGCATCTGGCTTG  
 GACTAGAGCTCCGAAAGTCCAAAGGGGAAAAATGACGGTGTGTGGGTGACAAGCGCTATTTACCTGTAA  
 GCCGAACACGGAGTGTGGTTAGACCAAGCCGAGTGACCTACCGCGGGATTAGTGGGTCAAAGCTCATT  
 GATGAGAATTGT

ACGCGTACGCGGCCGCTCGAG - GFP Tag - GTTTAA

**Protein Sequence:** >MG210146 representing BC035226  
 Red=Cloning site Green=Tags(s)

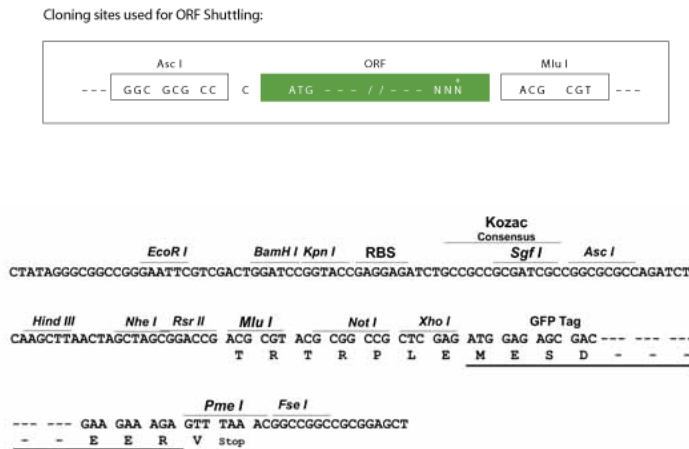
```

MTIEDLPDIPLEGSSLIGRYPFLFTGSDTSVIFISISAAPMPSDCEFSFFDPNDASCQEILFDPKTSVSEL
FAILRQWVPVQVQNIIDIIGNEILKRGCVNDRDGLTDMTLLHYTCKSGAHGIGDIETAVKFAAQLIDLGA
DASLRSRWTNMNALHYASYFDVPELIRVILKTSKPKDVDATCSDFNFGTALHIAAHNLCAGAVKTLLELG
ANPAFRNDKGQIPAEVVPDVPDMPLMADAAAIAKEIKQMLLDVPLPCTSAKAVLPNSDHTTSRAMLTS
LGLKLGDRVVIAGQKVGTLRFVCGTTEFASGQWAGIELDEPEGKNNNGSVGRVQYFKCAPKYGIFAPLSKIS
KLDGRKTTTHTPSTRATPHARSQKVDVAHFTSRVNSGLTTSKKETASESTLTLPPSEPKTVAENDAAQ
PGSMSSSSSSSLDHKQSYPKKLTSSGGKTLKSPSLPSRASAGLKSSATSAANNHHEGALHLGERV
LVVQQRVGTIKFFGTTNFAPGYWYIELEKPHGKNDGSGVGVQYFSCSPRYGIFAPPSRVQRLSDSLDTL
SEISSNKQNHSPGFRFSSTTSASSQKEINRRNAFAKTKTLRRSWSSTTAGGLEGTVKLHEGSQVLL
TSSNEMATVRYVGPTDFASGIWLGLELRSKAGKNDGAVGDKRYFTCKPNYGVLRPSRVTYRGISGSKLI
DENC
  
```

TRTRPLE - GFP Tag - V

**Restriction Sites:** AscI-MluI

**Cloning Scheme:**



**ACCN:** BC035226

**ORF Size:** 2114 bp

**OTI Disclaimer:** The molecular sequence of this clone aligns with the gene accession number as a point of reference only. However, individual transcript sequences of the same gene can differ through naturally occurring variations (e.g. polymorphisms), each with its own valid existence. This clone is substantially in agreement with the reference, but a complete review of all prevailing variants is recommended prior to use. [More info](#)

**OTI Annotation:** This clone was engineered to express the complete ORF with an expression tag. Expression varies depending on the nature of the gene.

**Components:** The ORF clone is ion-exchange column purified and shipped in a 2D barcoded Matrix tube containing 10ug of transfection-ready, dried plasmid DNA (reconstitute with 100 ul of water).

- Reconstitution Method:**
1. Centrifuge at 5,000xg for 5min.
  2. Carefully open the tube and add 100ul of sterile water to dissolve the DNA.
  3. Close the tube and incubate for 10 minutes at room temperature.
  4. Briefly vortex the tube and then do a quick spin (less than 5000xg) to concentrate the liquid at the bottom.
  5. Store the suspended plasmid at -20°C. The DNA is stable for at least one year from date of shipping when stored at -20°C.

**RefSeq:** [BC035226](#), [AAH35226](#)

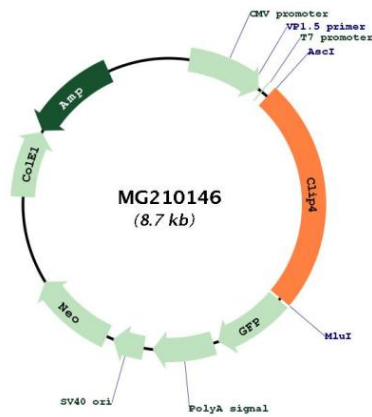
**RefSeq Size:** 2480 bp

**RefSeq ORF:** 2114 bp

**Locus ID:** 78785

**Cytogenetics:** 17 E1.3

**Product images:**



Circular map for MG210146