

## Product datasheet for **MG210141**

### **Dnajc14 (NM\_028873) Mouse Tagged ORF Clone**

#### **Product data:**

Product Type:	Expression Plasmids
Product Name:	Dnajc14 (NM_028873) Mouse Tagged ORF Clone
Tag:	TurboGFP
Symbol:	Dnajc14
Synonyms:	5730551F12Rik; DNAJ; DRIP78; HDJ3; LIP6
Mammalian Cell Selection:	Neomycin
Vector:	pCMV6-AC-GFP (PS100010)
E. coli Selection:	Ampicillin (100 ug/mL)



[View online »](#)

**ORF Nucleotide Sequence:**

>MG210141 representing NM\_028873  
 Red=Cloning site Blue=ORF Green=Tags(s)

TTTTGTAATACGACTCACTATAGGGCGGCCGGAATTCGTCGACTGGATCCGGTACCGAGGAGATCTGCC  
 GCC**CGGATCGCC**

ATGGCCCAGAAGCACCCGGGAGAAAGAAGTTGTGTGGAGCCACCCGAGTGGTGTACCTCCCTCAGTACATCAGGATCCTCTGTGGACCCGAAATACTTTTATTCTCAGGACTCAGGGACTCAGCAGAGACTGCTCC  
 TAATGGTACACGATGCCTCAAAGAGCACTCCGGCCCTAAGTACACACAGCCTCCAATCCAGCCACTGGTCAGATCCAAGCCATGGTCTCAAGGGGTCCAGGACCACCTAGAGGAGGAGGCTACCCTGATGAGAGCGAGACAGGTTT  
 CAGAAGAGTCAGGAGTGGACCAGGAACTCTCAAGAGAGAATGAGACTGGGTACCAGGAGGATGGGAGTCTTTTCTTTCCATTCCATCTGCTTGTAACTGCCAGGGAAGCCCTGGAGTCCCCGAAGGAACTTACTCCGAGGAAGGAGATGGCTCTTCTAGCAGCCTTGGCCACCATTGCACCTCTCCAGCCTTGGGGG  
 AAGATGAAGAGTTGGAAGAAGAATATGATGATGAGGAACCTCTTAAATTTCCAGTGATTTTTACAGTGTGCCAGTGAAAGAAACCCTTGTCCCGGAGGCAGAAGCACCGTTTTCTGATCAAGGAGGATGTTCCGGATAGTGGACGCAGAGAACC  
 CAAGGCCCCAGGTCGTCATCGGCTGGCCGAAAAGAAGTCAGACAGATAAGCGCAGAGCCCTGGGACTGTGGGGAGTAGAGGAACCTATGTCAGCTTGGACAAGCAGGCTTCTGGTGGCTGATGAACTTCTGGTATTGGTGGGAGAGTATGTG  
 GAAACCTGTGGCCATCTCATTACGCATGCAGGAAGCTGAAAGGCAGTGACCTGGACCTTTTTCCAGTCTGGGTGGGGTCTGGGCCAGGAGACTGGGGGGCTGGGCCGCATGATGTTCCAGTCTTAAGCCAGAGCTTCTCTGTGTGGTGGGGT  
 GCTCATCCGATTTCTTAGGGTGTGGGACTGGGCAACCGTTAGGCTGGAGGGATAAGACCGCTTGGCTGTTCTCTTGGCTGGGTTCTCCAGCCTTGATCATTGCTTGACTCTGCTGAAAGATAGCAGGCCATGGCAGCAGCTGGTAAGGTTAATACAGTG  
 GGCTGGCAGGAGCTGCCCTGGGTCAAACAGAGGACTAAGAAACAGGGCAATGCACCTGTAGCTAGCGGGCGATACTGCCAGCCTGAAGAGGAAGTGACCCGACTCTTGACCATGGCTGGGGTTCCTGAAGATGAACTAAACCTTTT  
 CATGTGCTGGGGTTGAAGCTACAGCATCCGACACTGAACTAAAGAAGGCCTATAGGCAGCTAGCAGTAATGGTCCATCCTGATAAAAAATCACCATCCCCGGGCTGAGGAGGCCTTCAAATTTTGGCGGCA  
 GCTTGGGACATTGTCAGCAACCCAGAGAGGCGGAAGGAATATGAGATGAAACGGATGGCAGAGAATGAGCTCAGCCGGTCAGTGAATGAGTTTCTGTCGAACTACAAGATGACCTCAAGGAGGCAATGAACACGATGATGTGCAGCAGATG  
 CCAAGGAAAGCATAGGAGTTTGAATGGACCGGGAACCAAGAGTGCCAGATACTGTGCTGAGTGTAAACAGGCTGCATCCTGCTGAGGAAGGAGACTTTTGGGCAGAGTCGAGCATGCTGGGCCTCAAGATCACTTACTTTGCGCTGATGGATGGAAAGGT  
 ATGACATCACAGAGTGGGCTGGATGCCAGCGTGGGTATCTCCCCAGATACTCACAGAGTTCCTTACCACATCTCATTGGTTCTCGGGTACCCGGCACCAGTGGCCGGCAGAGGGCCACTCCAGAGTCCCCTCTGCTGACCTGCAGGATTTCTT  
 GAGCCGGATCTTTCAAGTACCTCCGGGGCCGATGTCCAATGGGAACCTTTTGGCCACCTCACCTGGCCCTGGGACCCTTCCGACTCTAGGCCCAACAGTTCCAGTACCCAAGGGAGAAGCCAAACCTAAACGGCGGAAGAAAGTGAGGCGGCC  
 TTCAACGA

**ACGCGT**ACGCGGCCGCTCGAG - GFP Tag - GTTTAA

**Protein Sequence:** >MG210141 representing NM\_028873  
 Red=Cloning site Green=Tags(s)

MAQKHPGERRLCGAHRSGGTSLSSTSGSSVDPEILSFSGLRDSAETAPNGTRCLKEHSGPKYTQPPNPAHW  
 SDPSHGPPRPGPPRGGGYPDESETGSEESGVDQELSRENETGYQEDGSPSFLSIPSACNCQSPGVPEG  
 TYSEEGDSSSSSLCHHCTSPALGEDEELEEEYDDEEPLKFPSPDFSRVSSGKKPLSRRQKHRFLIKEDVRD  
 SGRREPKAPGRHRLARKRSQTDKRRGLGLWGVEELCQLGQAGFWWLIELLVLVGEYVETCGHLIYACRKL  
 KGSDLDLFRVWVGWARRLLGGWARMFQFLSQSFFCVVGLLIRILRVVGAFLLLALALFLGCLQLGWRF  
 VGLGNRLGWRDKTAWLFSWLGSPALHHCLTLLKDSRPWQQLVRLIQWGWQELPWVKQRTKKQGNAPVASG  
 RYCQPEEEVTRLLTMAGVPEDELNPFHVLGVEATASDTELKKAQRQLAVMVHPDKNHHPRAEEAFKILRA  
 AWDIVSNPERRKEYEMKMAENELSRVNEFLSKLQDDLKEAMNTMMSRCQGGKRRRFEMDREPKSARYC  
 AECNRLHPAEEGDFWAESSMLGLKITYFALMDGKVVYDITWAGCQRVGISPDTHRVPYHISFGSRVPGTS  
 GRQRATPESPPADLQDFLSRIFQVPPGPMNGNFFAAPHGPGTTSTSRPNSSVPKGEAKPKRRKKVRRP  
 FQR

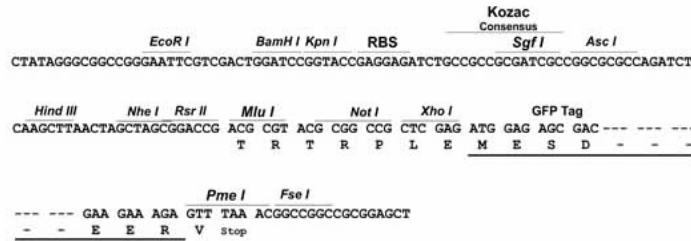
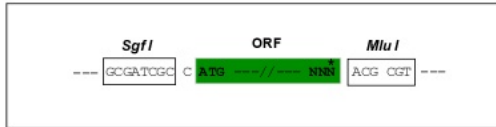
TRTRPLE - GFP Tag - V

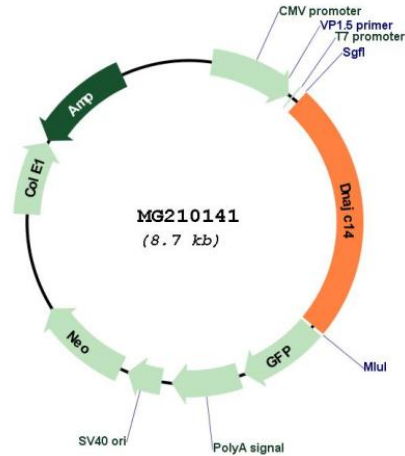
**Restriction Sites:**

SgfI-MluI

**Cloning Scheme:**

Cloning sites used for ORF Shutting:



**Plasmid Map:**


**ACCN:** NM\_028873

**ORF Size:** 2109 bp

**OTI Disclaimer:** The molecular sequence of this clone aligns with the gene accession number as a point of reference only. However, individual transcript sequences of the same gene can differ through naturally occurring variations (e.g. polymorphisms), each with its own valid existence. This clone is substantially in agreement with the reference, but a complete review of all prevailing variants is recommended prior to use. [More info](#)

**OTI Annotation:** This clone was engineered to express the complete ORF with an expression tag. Expression varies depending on the nature of the gene.

**Components:** The ORF clone is ion-exchange column purified and shipped in a 2D barcoded Matrix tube containing 10ug of transfection-ready, dried plasmid DNA (reconstitute with 100 ul of water).

**Reconstitution Method:**

1. Centrifuge at 5,000xg for 5min.
2. Carefully open the tube and add 100ul of sterile water to dissolve the DNA.
3. Close the tube and incubate for 10 minutes at room temperature.
4. Briefly vortex the tube and then do a quick spin (less than 5000xg) to concentrate the liquid at the bottom.
5. Store the suspended plasmid at -20°C. The DNA is stable for at least one year from date of shipping when stored at -20°C.

**RefSeq:** [NM\\_028873.5](#)

**RefSeq Size:** 4229 bp

**RefSeq ORF:** 2112 bp

**Locus ID:** 74330  
**UniProt ID:** [Q921R4](#)  
**Cytogenetics:** 10 D3  
**Gene Summary:** Regulates the export of target proteins, such as DRD1, from the endoplasmic reticulum to the cell surface.[UniProtKB/Swiss-Prot Function]