

Product datasheet for **MG210139**

Gbe1 (NM_028803) Mouse Tagged ORF Clone

Product data:

| | |
|---------------------------|---|
| Product Type: | Expression Plasmids |
| Product Name: | Gbe1 (NM_028803) Mouse Tagged ORF Clone |
| Tag: | TurboGFP |
| Symbol: | Gbe1 |
| Synonyms: | 2310045H19Rik; 2810426P10Rik; D16Ertd536e |
| Mammalian Cell Selection: | Neomycin |
| Vector: | pCMV6-AC-GFP (PS100010) |
| E. coli Selection: | Ampicillin (100 ug/mL) |



[View online »](#)

ORF Nucleotide
Sequence:

>MG210139 representing NM_028803
Red=Cloning site Blue=ORF Green=Tags(s)

TTTTGTAATACGACTCACTATAGGGCGGCCGGGAATTCGTCGACTGGATCCGGTACCGAGGAGATCTGCC
GCCCGCATCGCC

ATGGCGGCGCCGGCGGCTCCTGCGGCAGGGGAAACGGGCCCCGATGCTCGTCTGGAGGCCGCTTGCCG
ACGTGCCGGAGCTGGCCGACTCCTGGAGATTGACCCGTACCTGAAGCCCTTCGCCGGGACTTCCAGCG
CAGGTATAAGAAGTTTAGCCAGTTTTGCATGACATTGGAGAGAATGAAGTGGGATCGATAAGTTCTCC
AGAGGCTATGAGTCATTTGGCATCCACAGATGTTCTGATGGTGGCATCTACTGCAAAGAATGGGCCCCAG
GAGCAGAAGGAGTTTTTCTACTGGAGAATTCAGTGGTTGGAATCCATTTTCTCACCCATATAAAAAAGCT
GGAATACGGAAAATGGGAGCTGTATATCCACCCAAGCAGAACAATCCCCCTGATACCTCATGGGTCC
AAGCTGAAGGTAGTTATTACTAGTAAGAGTGGCGAGATACTGTATCGCATTTCCCATGGGCAAAGTATG
TGGTTCGTGAGAACAAACAGTGAACATGATTGGATACACTGGGCTCCAGAAGACCCCTATAAATTCAA
GCATTCAGACCTAAGAAACCAAGAAGCCTAAGAAATTTAATGAATCTCATGTGGGAATTTCTCCACGAA
GGAAAAATAGCTTCTTACAACATTTTACCAGCAATGTACTACCAAGAATCAAAGACCTTGGGTATAACT
GCATTCAGTTGATGGCGATCATGGAACATGCTTACTATGCCAGTTTTGGGTACCAAAATCACGAGCTTTT
TGCAGCTTCAAGTCGTTATGGAACCTCTGAAGAGCTGAAAGAACTTGTGACACAGCACATTCGATGGGC
ATTGTAGTCCCTCAGATGTGGTTCATAGCCATGCTTCAAAAAATTCAGAAGATGGGTAAACATGTTTTG
ATGGGACCGATTCTGTTATTTTCACTCTGGACCCCGAGGGACCCATGATCTTTGGGACAGTAGATTATT
TATCTATTCAGCTGGGAAGTTTTAAGATTCCTTCTGTGCAACATAAGATGGTGGTTGGAGGAGTACTGC
TTTGATGGCTCCGTTTTGATGGTGTCACTCTATGCTCTATCATCACCACGGAATGGGTCAAGGTTTTT
CGGGTACTATAATGAATATTTTGGACTACAAGTAGATGAAGATGCTTTGATTTATCTCATGTTGGCAAA
TCATTTGGCTCACACGTTGTACCCAGACTCGATAACAATAGCAGAGGATGTATCAGGGATGCCGGCTCTC
TGTTCTCCAACCTCCAGGGAGGCGGTGTTTTGACTACAGATTAGCAATGGCTATTCCAGATAAATGGA
TCCAATTAAGGAATTTAAAGATGAAGACTGGAATATGGGCAATATAGTGTACTCTACCAATCG
ACGCTACCTTGAAAAATGTGGCTTATGCAGAGAGTCATGATCAGGCATTGGTTGGTGACAAGACTG
GCGTTTTGGTTGATGGACGCTGAGATGTACACGAACATGAGCGTTCTGGCCCTTCACTCCAGTAATTG
ATCGAGGAATACAGCTTCATAAGATGATTCGTCTCATCACTCACGGGCTCGGTGGAGAAGGCTATCTCAA
TTTCATGGGTAATGAGTTTGGGCATCCTGAATGGTTGGACTTCCAAGGAAAGGAAATAATGAGAGTTAC
CATTATGCCAGAAGGCAGTTTAATTTAACCGACGATGACCTTCTCGCTATAAGTTCCCTAAATAACTTTG
ACAGAGATATGAATAGACTGGAAGAAAGATGTGGTTGGCTTTCAGCTCCACAGGCCTACGTGAGTAAAA
ACATGAAGCCAATAAGACAATCACCTTTGAGAGAGCAGGACTTCTTTATTTTCAACTCCACCCAAGC
AAGAGCTATACGGACTACCGAGTCGGGACAGCAACACCAGGGAAGTTCAAAATGTACTAGATTCTGACG
CAGCGGAGTATGGAGGTATCAGAGACTGGACCACAACCAACTACTTTGCTGAGGCTTTTGAACATAA
TGGGCGCCCTATTCTCTTCTGGTGTACATTCCAAGCCGAGTGGCTCTCATCCTTCAGAATGTGGATCTG
CAAAAC

ACGCGTACGCGGCCGCTCGAG - GFP Tag - GTTTAA

Protein Sequence: >MG210139 representing NM_028803
 Red=Cloning site Green=Tags(s)

MAAPAAPAAGETGPDARLEAALADVPELARLLEIDPYLKPFAADFQRRYKKSQVLHDIGENEGGIDKFS
 RGYESFGIHRCSDDGIYCKEAWPGAEGVFLTGEFSGWNPFSHPYKKLEYGKWEL YIPPKQNSPLIPHGS
 KLVVITSKSGEILYRISPWAKYVVRENNVNYDIIHWAPEDPYKFKHSRPPKPRSLRIYESHVGISSHE
 GKIASYKHFTSNVLPRIKDLGYNCIQLMAIMEHAYYASFGYQITSFFAASSRYGTPEELKELVDTAHS
 MGIVVLLDVVHSHASKNSEGLNMFDTGDSYFHSFPRGTHDLWDSRLF IYSSWEVLRFLLSNIRWWLEEYC
 FDGFRFDGVTSMLYHHHGMGQFSGDYNEYFGLQVDEDALIYMLANHLAHTLYPDSITIAEDVSGMPAL
 CSPTSQGGGGFDYRLAMAIPDKWIQLLKEFKDEDWNMGNIVYTLNRRYLEKCVAYAESHQALVGDKTL
 AFWLMDAEMYTNSVLAPFPTVIDRGIQLHKMIRLITHGLGGEGYLNFMGNEFGHPWDFPRKGNESY
 HYARRQFNLTDDDLLRYKFLNDFDRDMNRL EERCGLW SAPQAYVSEKHEANKTITFERAGLLFIFNFHPS
 KSYTDYRVGTATPGFKIVLDSAAEYGGHQRLDHNTNYFAEAFEHNGRPYSLLVYIPSRVALILQNVDL
 QN

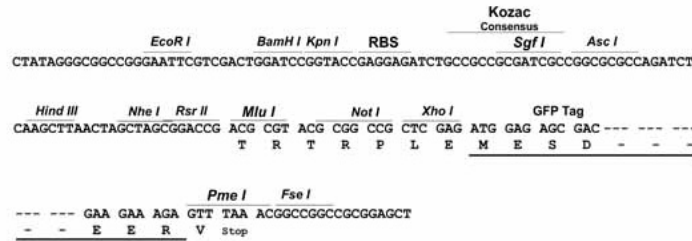
TRTRPLE - GFP Tag - V

Restriction Sites:

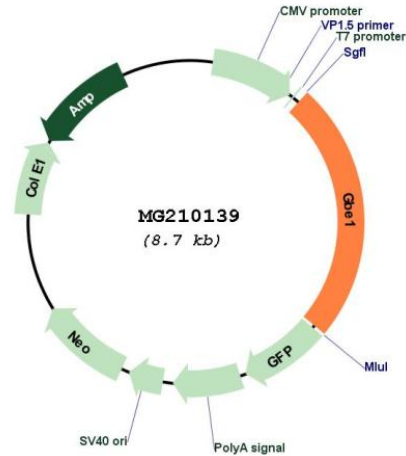
SgfI-MluI

Cloning Scheme:

Cloning sites used for ORF Shutting:



Plasmid Map:



ACCN: NM_028803

ORF Size: 2106 bp

OTI Disclaimer: The molecular sequence of this clone aligns with the gene accession number as a point of reference only. However, individual transcript sequences of the same gene can differ through naturally occurring variations (e.g. polymorphisms), each with its own valid existence. This clone is substantially in agreement with the reference, but a complete review of all prevailing variants is recommended prior to use. [More info](#)

OTI Annotation: This clone was engineered to express the complete ORF with an expression tag. Expression varies depending on the nature of the gene.

Components: The ORF clone is ion-exchange column purified and shipped in a 2D barcoded Matrix tube containing 10ug of transfection-ready, dried plasmid DNA (reconstitute with 100 ul of water).

Reconstitution Method:

1. Centrifuge at 5,000xg for 5min.
2. Carefully open the tube and add 100ul of sterile water to dissolve the DNA.
3. Close the tube and incubate for 10 minutes at room temperature.
4. Briefly vortex the tube and then do a quick spin (less than 5000xg) to concentrate the liquid at the bottom.
5. Store the suspended plasmid at -20°C. The DNA is stable for at least one year from date of shipping when stored at -20°C.

RefSeq: [NM_028803.4](#)

RefSeq Size: 2846 bp

RefSeq ORF: 2109 bp

Locus ID: 74185
UniProt ID: [Q9D6Y9](#)
Cytogenetics: 16 40.19 cM
Gene Summary: Required for normal glycogen accumulation. The alpha 1-6 branches of glycogen play an important role in increasing the solubility of the molecule.[UniProtKB/Swiss-Prot Function]