

## Product datasheet for **MG210128**

### **Acox3 (NM\_030721) Mouse Tagged ORF Clone**

#### **Product data:**

Product Type:	Expression Plasmids
Product Name:	Acox3 (NM_030721) Mouse Tagged ORF Clone
Tag:	TurboGFP
Symbol:	Acox3
Synonyms:	BI685180; EST-s59; PCOX
Mammalian Cell Selection:	Neomycin
Vector:	pCMV6-AC-GFP (PS100010)
E. coli Selection:	Ampicillin (100 ug/mL)



[View online »](#)

**ORF Nucleotide  
Sequence:**

>MG210128 representing NM\_030721  
 Red=Cloning site Blue=ORF Green=Tags(s)

TTTTGTAATACGACTCACTATAGGGCGGCCGGGAATTCGTCGACTGGATCCGGTACCGAGGAGATCTGCC  
 GCC**CGGATCGCC**

ATGGGATCCCTACCGAAGAAAAAGACAGTGCTTTGTGGTCAGACACCCCAAGGGCCCTCTTAGTGCCT  
 ACCGAGCAAGAGCCTCCTTCAACTCTGGGAGCTGCTGCTCTTTGGGACGGCCAGGATGTAATCCACTT  
 CAAGAAAACCATCTTCTCAACTTTGGAGAATGACCCTCTCTTTGCCCGCTCGTACGGGGCCGACCTGCC  
 CTAGAGAAGCTACGAGAAGTGAACCTTCTCGCTGCAAGAGGGTCTTTGAGTATGGCTTCTTCAAAGTAG  
 AGGAACTGCTAAAGAACCCCTGAAGATTCTAGTGTGATTAAGTGCCTGGGCATGTACGACTGGTCCCT  
 GGCCAACAAATGCGTCTCCACATGTTGGTTTTTGAACCACAGTTTTCGTTTCTGGTCTGAGAAGCAT  
 TTCAAGTACCTTGAGAAGATCTATAGCCTGGAGATTTTTGGCTGTTTTGCTCTCACCGAAGTGCATG  
 GGAGTAATACCAAGGCCATGCGAACGACAGCTCACTATGATCCTGATACTCAGGAATTCATCTTACATTC  
 CCCGGATTTGAGGCTGCCAAATTTTGGGTGGCAACCTGGGCAAGACGGCAACTCATGCGGTGGTGT  
 GCCCAACTGTACATGCCAGACGGCCAGTCCACGGCTGCAATTCCTTCTGGTGCAGATCCGTGACACGA  
 AGACCCTGCTTCCATGACGGGGGTGATGGTGGTGCATTGGGAAGAAGCTGGGGCAGAATGGCCTGGA  
 TAATGGATTGCCATGTTCAACAAAGTTGCAATTCCTCGCCAGAAGCTGCTGGACAGGACTGGGAATATC  
 ACCTCTGAGGGCACTTACAACAGCCCTTTAAGGATGTCGGCAGCGTTTGGGCGCATCATTGGGCGCC  
 TGTCTCAGGACGCATCTCCATCATCAGCATGTCTGTGGTCAACCTGAAGCTGGCCGTGTCCATAGCCAT  
 CCGGTTCTCGGCCACACGGTGTGAGTTTGGACCCAGGATAAGGAAGAGATTCTGTCTTGAATATCCA  
 CTGCAGCAATGGCGCATACTTCCGTACCTGGCGCTGCCTATGCCTTGGACCACTTCTTAAGACAATCT  
 TCATGGACTTGATAGAGGTGCAGAGTCCCGGCTCAGGGGAGACCACAGCAGCAGCAGGCAGAACTCGG  
 AGGTGAGATCCATGCTCTGGCATCGGCTGGCAAGCCTCTAGCCTCATGGACAGCCAGCGGGGTATCCAG  
 GAGTGCCGTGAGGCGTGTGGGGACATGGCTACCTGGCCATGAACCGGTTTGGTGCCTCAGAAAACGACA  
 ACGACCCAAACTGTACCTATGAAGGTGACAACAATGTCCTGCTGCAGCAGACCAGCAACTACCTGCTCAG  
 CCTCCTGGAGCCTCCTCTCCAAGACGGAGCTCACTTACAAGCCCTCTCAAGACCGTGGACTTTCTGGAA  
 GCCTATCTGGAATCTTGGGCCAGAAGTTCTGGGCTCCAGCAAGGCTGACTGGATGGACTCAGCAGCCC  
 CCCTGGCAGCCTACCGCTGGCTTGTGTTGCTACTTGCTCCAAGAGAGCCATCGGAGATACTGCCAAGAGAA  
 AAAGTCCAGAGGCAGTGACTTTGAAGCAAGAAACAACAGCCAGGTGTACGGCTGCCGGCCCTGGCCCTG  
 GCCTTCATGGAAGTCAACCGTGTGCAGCGATTCCACGAACATATACACAGCTCCGGTCTGTCTCCATCTC  
 TGGCGACTGTGCTCGGGCGGCTCAGCACGCTCTACGGCCTGTGGTGCCTGAGCCAGCACATGGCCCTGCT  
 CTACCGAGGTGGCTACATTTCTGGGGAACAAACAGGAAGAGCGATGGAGGACGCCATCCTGACCCTGTGT  
 GAGCAGCTGAAAGACGATGCGGTGGCCTTGGTAGATGTCATCGCCCCCTCCGACTTTGTTCTGAACTCCC  
 CAATTGCCAAAGCTGATGGTGGAGCTCTATAAAACCTGTGGGCAGCTGTCTGCAGCAGAATGGTGTGCT  
 AGAGCGTGCCCGCTGGTGGCCCGAGTTCTTGCCAACAAATCTGTAGCCGACAGGCTAAAGTCCCAGCTG

**ACGCGT**ACGCGGGCCGCTCGAG - GFP Tag - GTTTAA

**Protein Sequence:** >MG210128 representing NM\_030721  
 Red=Cloning site Green=Tags(s)

MGSLPEEKDSALWSDTPKGPLSAYRARASFNSGELLLFWDGQDVIHFKKTIFSTLENDPLFARSYGADLP  
 LEKLRFLNFRCKRVFEYGFVKVEELLKNPLKILVLINCLGMYDWSLANKCVLHMLVFGTTVFVSGSEKH  
 FKYLEKIYSLEIFGCFALTELSHGSNTKAMRTTAHYDPTDQEFILHSPDFAAKFWVGNLGTATHAVVF  
 AQLYMPDQGQCHLHSFLVQIRDTKLLPMTGVMVGDIGKKGQNGLDNGFAMFNKVRIPRQNLDRGTNI  
 TSEGTYNSPFKDVQRQLGASLGLSSGRISIIISMSVVNLKLAVSIAIRFSATRCQFGPTDKEEIPVLEY  
 LQQWRILPYLAAAYALDHFSKTIFMDLIEVQSARLRGDHSDQQAELGREIHALASAGKPLASWTAQRGIQ  
 ECREACGGHGYLAMNRFGLRNDNDPNCTYEGDNNVLLQQTSNYLLSLEPPLQDGAHFTSPLKTVDFLE  
 AYPGILGQKFLGSSKADWMSAAPLAAYRWLVCYLLQESHRRYCQEKSRGSDFEARNNSQVYGCRLPAL  
 AFMELTVMQRFHEHIHSSGLSPSLRTVLGRLSTLYGLWCLSQHMALLYRGGYISGEQTGRAMEDIAILTL  
 EQLKDDAVALVDVIAPSDVFLNSPIAKADGELYKNLWAAVLQQNGVLERAAWWPEFSANKSVADRLKSQ

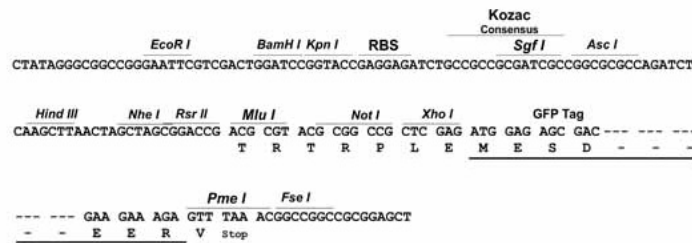
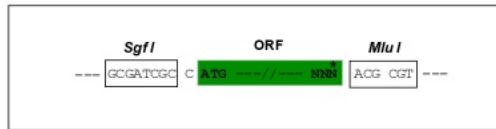
TRTRPLE - GFP Tag - V

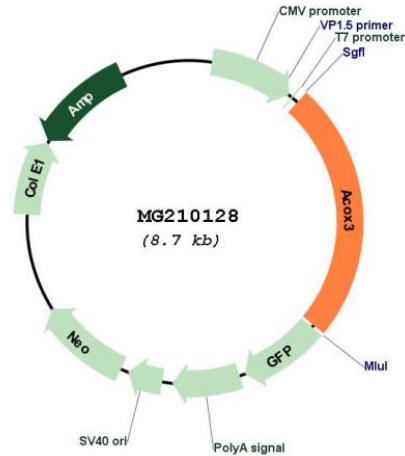
**Restriction Sites:**

SgfI-MluI

**Cloning Scheme:**

Cloning sites used for ORF Shuttling:



**Plasmid Map:**


**ACCN:** NM\_030721

**ORF Size:** 2100 bp

**OTI Disclaimer:** The molecular sequence of this clone aligns with the gene accession number as a point of reference only. However, individual transcript sequences of the same gene can differ through naturally occurring variations (e.g. polymorphisms), each with its own valid existence. This clone is substantially in agreement with the reference, but a complete review of all prevailing variants is recommended prior to use. [More info](#)

**OTI Annotation:** This clone was engineered to express the complete ORF with an expression tag. Expression varies depending on the nature of the gene.

**Components:** The ORF clone is ion-exchange column purified and shipped in a 2D barcoded Matrix tube containing 10ug of transfection-ready, dried plasmid DNA (reconstitute with 100 ul of water).

**Reconstitution Method:**

1. Centrifuge at 5,000xg for 5min.
2. Carefully open the tube and add 100ul of sterile water to dissolve the DNA.
3. Close the tube and incubate for 10 minutes at room temperature.
4. Briefly vortex the tube and then do a quick spin (less than 5000xg) to concentrate the liquid at the bottom.
5. Store the suspended plasmid at -20°C. The DNA is stable for at least one year from date of shipping when stored at -20°C.

**RefSeq:** [NM\\_030721.3](#)

**RefSeq Size:** 3977 bp

RefSeq ORF: 2103 bp  
Locus ID: 80911  
UniProt ID: [Q9EPL9](#)  
Cytogenetics: 5 B3  
Gene Summary: Oxidizes the CoA-esters of 2-methyl-branched fatty acids.[UniProtKB/Swiss-Prot Function]