

## Product datasheet for **MG210124**

### Zfp111 (BC005456) Mouse Tagged ORF Clone

#### Product data:

Product Type:	Expression Plasmids
Product Name:	Zfp111 (BC005456) Mouse Tagged ORF Clone
Tag:	TurboGFP
Symbol:	Zfp111
Mammalian Cell Selection:	Neomycin
Vector:	pCMV6-AC-GFP (PS100010)
E. coli Selection:	Ampicillin (100 ug/mL)



[View online »](#)

ORF Nucleotide  
Sequence:

>MG210124 representing BC005456  
Red=Cloning site Blue=ORF Green=Tags(s)

TTTTGTAATACGACTCACTATAGGGCGGCCGGGAATTCGTCGACTGGATCCGGTACCGAGGAGATCTGCC  
GCCGCGATCGCC

ATGACCAAGTTACAGGAGCAGTGACATTCAGGGACGTGGCCGTGGTCTTCAGCGAGGAGGAGCTGGGGC  
TGCTGGACGCTGCTCAGAGGAAGCTGTACCACGATGTGATGCTGGAGAATTTCAGGAACCTCCTGGCAGT  
GGGAGGCCAGAGTCCAAATAAGATGGAGATTGTTGACGCAACAGGATTAAGGTGCCTTTCACTGGGCGAG  
CTTCTCTGCTGGGGAGAAACAAGCCATAATATCAACAACTAGCCAGAGCTCTAGAAGCTGTAATCAACA  
CTCAGGGAAAGTGTCTCACTCATTGGAGCAGTGCCACTCCTCCTGCCACAGGGTATCAGAAGAGCCTCC  
CCGGGATTCTGAGGATAGCAGTTCTCTGATCTGACAAATGACCATTCCAGCATTACTGAAAATCAGGAA  
TTTCTGTCTGGGAGAGCCAGGGTTCTTGGGGTAAAAGACGTCTTAGGAAAAGACAGAACCATCAGAAAA  
ACTGTCTGCAGACTCTGATGAAAAACAAGCCACAGCTGCTGGCTCAGCATTCTCCTGTACATAGTACGCA  
GGAGGACACCAGGCATAGCTTCAGTGTGCCAGTCAAGAAAGCATTATCCAGGAAGAAAGCGCTACAGG  
TGTCAAGAGTGTGGCAAGGCTTCCGTCAGAGCTCAGCACTTCAGACTCACCAGAGAGTGCACACAGGGG  
AGAAGCCCTACAGGGGCAACAGCCGTGGGAAAACTTCAGTCGTAGCTCGGATCTCAACATCCACCGCCA  
AGTGCACACTAGAGAGAAACCTTACACATGTAAAGTGTGTAAGAAGCGCTTCATGCAAGTGTTCGCTTCTC  
CAGGCTCACAAGAGGATTCACACAGGAGAGAAGCCATATAAGTGTGGCGACTGTGGCAAGCGCTTCAGCT  
GTATCTCGAACTTTCACATCCACCAGAGAGTCCACACTAAGAGCAAACCGTCCAAGTGTGATTATGGGAA  
GCCCTTCAACTTGAGATGCAACTCCACAGCCATCAGCGGGTCCACACAGGAGAGAAGCCATATAAATGT  
GAAGAGTGTGGGAAGGGTTTCACTTCAGCCTCAAGCTTCAAAGACACCAGCGGGTCCATACAGGAGAGA  
AGCCATTTGCTGCAGTGTGTGGGAAGGGCTTCAGTCGGACTTCATACCTTCAGACTCATCAGAGAGT  
GCACTCAGGGGACAAGCCTTATCAGTGGCAGAGCTGTGGGAAGGGCTTCACTCAGTTGTCACACCTCCAG  
GCCACGAGAGAAATTCACACAGATCAGAAGCCATATAAGTGTGGAGACTGTGGCAACCGCTTCAGCTGCA  
GCTCAAACCTTCACACCCACCAGAGAGTCCACACAGGAGAGAAACCTATAAATGTGAGGAGTGTGGGAA  
AGGCTTCAGCCTTGTCTCTGGGCTACAGGCTCATCAAAGAGTCGAAACTGGCAAGAAGCCATTCAAATGC  
AATGCATGCCAGAAGCGATTTAGTCAGGCCTGGAACCTCCATGCCACCAGAGGGTGCACACTGGGAGAG  
AGCCCTACAAATGTGACACGTGTGGAAAGCCTTTGGCCAGAGGTCTGGTCTCAAATCCATCAGAGAAT  
TCATACTGGGAGAAAGCCTTCAAGTGTGAGGAGTGTGGGAAGGAATTCAGCTTGAATCCGGGCTTATT  
GCTCACCAGGAGTCCACACGGGAGAGAAACCTATGAGTGAAGGACTGTGGGAAAGGCTTCAGTCTTG  
CCTCAAGTCTACGGACTCATCAGAGAGTTCACACTGGTGAGAAGCCCTTCCAATGCAATGAGTGCCAGAA  
GCGGTTAGTCAGGTCTCACACCTCCAGTCCCACCAGAGAGTGCACACTGGGAGAGGCCCTACAAATGT  
GACCGGTGTGGAAAGCTTTAGCCAGAAGTCTGGGCTCCAAGTCCATAAGAGAATTCACACTGGGAGAG  
AGCCGTTCAAGTGTGAGGAGTGTGGGAAGGAATTCATCTGGAGCTCAGGGCTTAGTGCTCACCAGGAGT  
TCATACAGGAGAGAAACCTACAGACGTGGCAGTATGGGAAGGGCTTCATCAGGCTCACACTCCGAT

ACGCGTACGCGGCCGCTCGAG - GFP Tag - GTTTAA

**Protein Sequence:** >MG210124 representing BC005456  
 Red=Cloning site Green=Tags(s)

MTKLQEAVTFRDVAVVFSEEELGLLDAAQRKLYHDMLENFRNLLAVGGQSPNKMEIVDATGLRCLSLGQ  
 LLCWGETSHNINKLARALEAVINTQGKCSHSLEQCHSSCHRVSEPPRDESSSPDLTNDHSSITENQE  
 FLSGRAQGSWGRRLRKRQNHQKNCLQLTMKNPQLLAQHSPVHSTQEDTRHSFVSPVQESIYPGRKRYR  
 CQECGKAFRQSSALQTHQRVHTGEKPYRGNRSGKNFSRSSDLNIHRQVHTREKPYTCKVCKKRFMQCSLL  
 QAHKRIHTGEKPYKCGDCGKRFSCISNFHIHQRVHTKSKPSKCDYGKPFNLRCNFHSHQRVHTGEKPYK  
 EECGKGFTSASSFORHQRVHTGEKPFVCSVCGKGFRTSYLQTHQRVHSGDKPYQCDSCGKGFQLSHLQ  
 AHERIHTDQKPYKCGDCGKRFSCSSNLHHTQRVHTGEKPYKCEECGKGFSLVSLGLQAHQRVETGKKPFKC  
 NACQKRFSAWNLHAHQRVHTGEKPYKCDTCGKAFGQRSLQIHQRIHTGEKPFKCEECGKEFSLNSGLI  
 AHRRVHTGEKPYECKDCGKGFSLASSLRTHQRVHTGEKPFQCNQCQKRFSSQVSHLQSHQRVHTGEKPYK  
 DRCGKAFSQKSLQVHKRIHTGEKPFKCEECGKEFIWSSGLSAHRKVHTGEKPYRRRQYKGLIRPHTSD

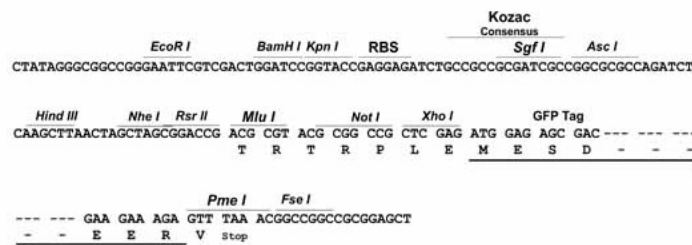
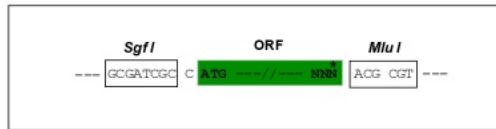
TRTRPLE - GFP Tag - V

**Restriction Sites:**

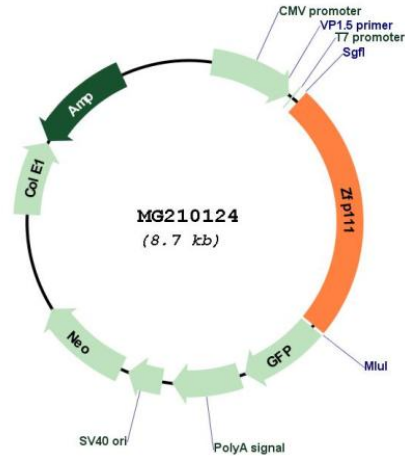
SgfI-MluI

**Cloning Scheme:**

Cloning sites used for ORF Shuttling:



## Plasmid Map:



ACCN: BC005456

ORF Size: 2102 bp

OTI Disclaimer: The molecular sequence of this clone aligns with the gene accession number as a point of reference only. However, individual transcript sequences of the same gene can differ through naturally occurring variations (e.g. polymorphisms), each with its own valid existence. This clone is substantially in agreement with the reference, but a complete review of all prevailing variants is recommended prior to use. [More info](#)

OTI Annotation: This clone was engineered to express the complete ORF with an expression tag. Expression varies depending on the nature of the gene.

Components: The ORF clone is ion-exchange column purified and shipped in a 2D barcoded Matrix tube containing 10ug of transfection-ready, dried plasmid DNA (reconstitute with 100 ul of water).

Reconstitution Method: 

1. Centrifuge at 5,000xg for 5min.
2. Carefully open the tube and add 100ul of sterile water to dissolve the DNA.
3. Close the tube and incubate for 10 minutes at room temperature.
4. Briefly vortex the tube and then do a quick spin (less than 5000xg) to concentrate the liquid at the bottom.
5. Store the suspended plasmid at -20°C. The DNA is stable for at least one year from date of shipping when stored at -20°C.

RefSeq: [BC005456](#), [AAH05456](#)

RefSeq Size: 2648 bp  
RefSeq ORF: 2102 bp  
Locus ID: 56707  
Cytogenetics: 7 A3