

## Product datasheet for **MG210123**

### Usp11 (NM\_145628) Mouse Tagged ORF Clone

#### Product data:

Product Type:	Expression Plasmids
Product Name:	Usp11 (NM_145628) Mouse Tagged ORF Clone
Tag:	TurboGFP
Symbol:	Usp11
Synonyms:	6230415D12Rik; mKIAA4085
Mammalian Cell Selection:	Neomycin
Vector:	pCMV6-AC-GFP (PS100010)
E. coli Selection:	Ampicillin (100 ug/mL)



[View online »](#)

ORF Nucleotide  
Sequence:

>MG210123 representing NM\_145628  
Red=Cloning site Blue=ORF Green=Tags(s)

TTTTGTAATACGACTCACTATAGGGCGGCCGGAATTCGTCGACTGGATCCGGTACCGAGGAGATCTGCC  
GCCGCGATCGCC

ATGGAGACTCGAAACAAGATGGCACTTGGCCAGTGCTCAGCTGTGTGGCATGAACAACATACCGGACG  
AGGATGAGGACTTCCAGGGCAACCGGGCATCTGTGGCCTTACCAATCTGGGCAACACATGCTTCATGAA  
CTCGGCCCTACAGTGCCTGAGCAATGTGCCACAGCTGACAGAGTACTTTCTCAACAATCGCTACCTAGAG  
GAGCTCAACTTCCGGAACCCCTCTAGGCATGAAGGGTGAGCTTGCTGAGGCCTATGCAGATCTGGTAAAGC  
AGACTTGGTCTGGCTACCACCGTCCATTGTGCCAAATGTGTTCAAGAACAAGGTTGGCCATTTGCATC  
CCAGTTTCTGGGCTACCAGCAGCATGACTCACAGGAAGTACTGTCATTCTCCTGGATGGGCTACATGAG  
GATCTCAATCGGGTCAAAAAGAAAGAATATGTTGAGCTATGCAATGGTGTGGGCGGCTGATCTGGAAG  
TGGCTCAGGAAGCTGGCAGAACCATAAACGACGAAATGATTCTGTGATCGTGGACACTTCCATGGCCT  
CTTCAAGTCCACCCTGGTGTGCCCTGATTGTGGCAATGTTTCTGTGACCTTTGACCCCTTCTGCTACCTC  
AGTGTCCCACTGCCTGTCTGCTCCAGGAGGGTCTTGAAGTCTTCTTTGTCCCACTGGATCCCCGCGCA  
AGCCAGAACAGCACCGGGTGTAGTCCCAAGAAGGGCAATATCTCAGATCTGTGTGTGGCTCTGTCCAC  
GCATACAAGTGTGCACCAGACAAGATGATAGTAGCTGATGTCTTCAGTCACCGATTCTATAAGCTTTAC  
CAGCTGGAGGATCCTCTGAGTGGCATCTTGGATCGTATGATATCTTTGTATATGAGGTGACTGGTCCGA  
TTGAGCCGGTTGAGGGTCAAGAGATGATATTGGTACCTGTTACTTGGCGGAGCGCACCCCATCCAG  
AGACTACAACAACCTCTACTATGGTCTGATACTTTTGGGCACCCTCTCCTGGTGTGAGTCCCCGGGAC  
CGGTTCTCCTGGGAGGGCCTATAAACATCTTGATGTACCGACTTTCACGATATGTGACCAACCCACCT  
CAGATGAGGATGATGGGATGAGAAAGTTGATGAAGATGAGGATGAGGATGTGGAAGATGACAGCAGCAG  
TGAGGAGGAAAAGGAGGAAATGTCTGCGCCACTGTTAATGATGGGACCCGAGAAGCAGAGCAGGAGCAG  
GCTGGGACCAGCTCTGGGTCAGTGTGAGAGATGCCCATCCCTCTTAGACAACAGCCTCCGCGCATCGCAGT  
GGCCCCAAGGCGACGACGAAAGCAGCTGTTTACTCTGCAGACGGTGAACCTCAATGGAACCAAGTACCG  
GACCACTTCCCCTGAAGAAATGCAAACCCAGCCATACATTGCCATGGATTGGGAACCAGATATGAAGAGG  
CGTTATTATGACGAAGTGGAGGCTGAGGGCTATGTGAAGCATGACTGTGTGGGCTACATGCTGAAGAAA  
GTCCAGTGCAGCTGAAGGAGTGCATCAAACCTTACCAGTGTGGAAACCCCTGGAGAAGGAGAACCCCTG  
GTACTGCTCCTCCTGCAAGCAGCACCAGCTGGCCACCAAGAACTGGACCTCTGGATGCTACCCGAAGTT  
CTCATTATCCACCTGAAGCGTTTTTCATTTCCAAAATTTCCCGGAGAAGCTGGACACCCTGGTGCAGT  
TTCTATCCGGGACCTGGATTTCTGAGTTTGTATCAAACCAAGAATGAGTCTTCTCCAGACCTCTA  
CAAATATGATCTCATCGAGTTTCCAACCATATGGTGGCATGCGTGTGACACTATAACAATTTGCC  
TGCAACAAGGACAGTGGCCAGTGGCACTACCTTGATGACAATAGTGTCTCACCTGTGAATGAGAATCAGA  
TTGAGTCCAAGGCAGCCTATGTCTTGTCTATCAGCGCCAAGATGTGGGTCGACGCCAGTCCCAGACTTC  
TTCATCTGACACTCCTGCCTCTCTGTCTCCAGTTCTACACCAACTCTGACATCATGGATATCAAC

ACGCGTACGCGGCCGCTCGAG - GFP Tag - GTTTAA

Protein Sequence: >MG210123 representing NM\_145628  
 Red=Cloning site Green=Tags(s)

METRNDGTWPSAQLCGMNNIPDEDEDQGGQPGICGLTNLGNTCFMNSALQCLSNVPQLTEYFLNNRYLE  
 ELNFRNPLGMKGELAEAYADLVKQTSWGSYHRSIVPNVFNKKNVGHFASQFLGYQQHDSQELLSFLLDGLHE  
 DLNRVKKKEYVELCNGAGRPDLEVAQEAWQNHKRRNDSVIVDTFHGLFKSTLVCPDCGNVSVTFDPFCYL  
 SVPLPVCSSRRVLEVFVPMDDPRRKPEQHRVVPKKNISDLCVLSTHTSVAPDKMIVADVFSHRFYKLY  
 QLEDPLSGILDRDDIFVYEVTGRIEPEVGSRDDIVVPVYLRETPSRDYNNSYYGLILFGHPLLVSVPRD  
 RFSWEGLYNILMYRLSRVYTKPTSDEDDGDEKVEDEDEDVEDSSSEEEKEEMSAPTVDNGTREAEQEQ  
 AGTSSGVERTCPSSLDNSLRASQWPPRRRRKQLFTLQTVNSNGTSDRTTSPEEMQTQPYIAMDWEPDMKR  
 RYYDEVEAEQYVYKDCVGYMLKKSPVQLKEIKLFTTVETLEKENPWYCSSCKQHQLATKKLDLWMLPEV  
 LI IHLKRFSFSKISREKLDLTVQFPIRDLDSEFVIKPKNESSPDLYKYDLIAVSNHYGGMRDGHYTTFA  
 CNKDSGQWHYLLDNSVSPVNNENQIESKAAYVLFYQRQDVGRRQSQTSSSDTPASPVSSSTPNSDIMDIN

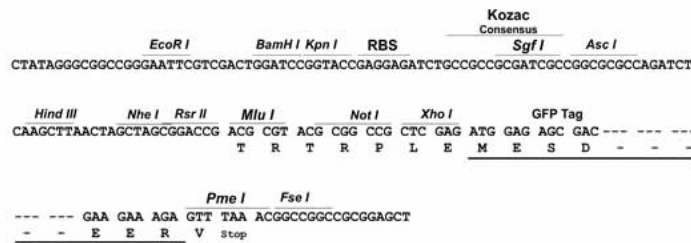
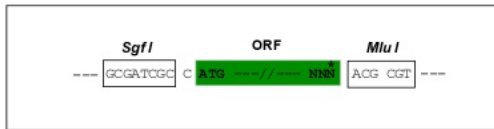
TRTRPLE - GFP Tag - V

Restriction Sites:

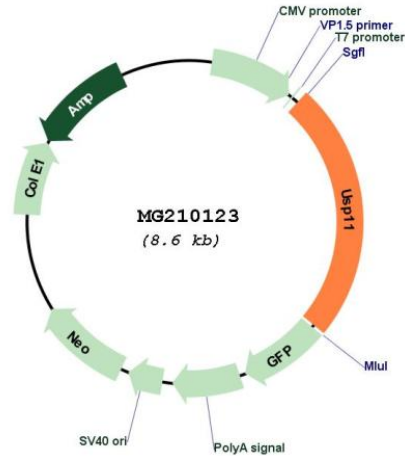
Sgfl-MluI

Cloning Scheme:

Cloning sites used for ORF Shuttling:



## Plasmid Map:



ACCN: NM\_145628

ORF Size: 2097 bp

OTI Disclaimer: The molecular sequence of this clone aligns with the gene accession number as a point of reference only. However, individual transcript sequences of the same gene can differ through naturally occurring variations (e.g. polymorphisms), each with its own valid existence. This clone is substantially in agreement with the reference, but a complete review of all prevailing variants is recommended prior to use. [More info](#)

OTI Annotation: This clone was engineered to express the complete ORF with an expression tag. Expression varies depending on the nature of the gene.

Components: The ORF clone is ion-exchange column purified and shipped in a 2D barcoded Matrix tube containing 10ug of transfection-ready, dried plasmid DNA (reconstitute with 100 ul of water).

Reconstitution Method:

1. Centrifuge at 5,000xg for 5min.
2. Carefully open the tube and add 100ul of sterile water to dissolve the DNA.
3. Close the tube and incubate for 10 minutes at room temperature.
4. Briefly vortex the tube and then do a quick spin (less than 5000xg) to concentrate the liquid at the bottom.
5. Store the suspended plasmid at -20°C. The DNA is stable for at least one year from date of shipping when stored at -20°C.

RefSeq: [NM\\_145628.1](#)

RefSeq Size: 3444 bp

RefSeq ORF: 2766 bp

Locus ID: 236733

UniProt ID: [Q99K46](#)

Cytogenetics: X A1.3

**Gene Summary:** Protease that can remove conjugated ubiquitin from target proteins and polyubiquitin chains. Inhibits the degradation of target proteins by the proteasome. Cleaves preferentially 'Lys-6' and 'Lys-63'-linked ubiquitin chains. Has lower activity with 'Lys-11' and 'Lys-33'-linked ubiquitin chains, and extremely low activity with 'Lys-27', 'Lys-29' and 'Lys-48'-linked ubiquitin chains (in vitro). Plays a role in the regulation of pathways leading to NF-kappa-B activation. Plays a role in the regulation of DNA repair after double-stranded DNA breaks. Acts as a chromatin regulator via its association with the Polycomb group (PcG) multiprotein PRC1-like complex; may act by deubiquitinating components of the PRC1-like complex. [UniProtKB/Swiss-Prot Function]