

Product datasheet for **MG210122**

Dnm1l (BC079635) Mouse Tagged ORF Clone

Product data:

Product Type:	Expression Plasmids
Product Name:	Dnm1l (BC079635) Mouse Tagged ORF Clone
Tag:	TurboGFP
Symbol:	Dnm1l
Synonyms:	6330417M19Rik; AI450666; Dlp1; Dnmlp1; Drp1; python
Mammalian Cell Selection:	Neomycin
Vector:	pCMV6-AC-GFP (PS100010)
E. coli Selection:	Ampicillin (100 ug/mL)



[View online »](#)

ORF Nucleotide Sequence:

>MG210122 representing BC079635
 Red=Cloning site Blue=ORF Green=Tags(s)

TTTTGTAATACGACTCACTATAGGGCGGCCGGAATTCGTCGACTGGATCCGGTACCGAGGAGATCTGCC
 GCC**GCGATCGCC**

ATGGAGGCGCTGATCCCGTTCATCAATAAGCTGCAGGACGTCTTCAACACAGTGGGTGCGGACATCATCC
 AGCTGCCTCAGATCGTCGTAGTGGGAACGACAGCAGTGGGAAGAGCTCAGTGCTGGAAAGCCTAGTGGG
 CAGGGACCTTCTCCAGAGGAAGTGGTGTGGTACCCGAGACCTCTCATTCTGCAGCTAGTCCACGTT
 TCACCAGAAGATAAAAGAAAAACAACAGGAGAAGAAAAATGGAGTTGAAGCAGAAGAATGGGGTAAATTTT
 TTCACACCAAAAAACAAGCTTTACACAGATTTTGTGAAATTCGACAAGAAATGAAAATGAAACTGAAAG
 AATTTTCAGGAAATAATAAGGGGTAAGCCCTGAGCCAATCCATCTCAAGTTTTCTCGCCCAACGTTGTC
 AACCTGACACTTGTGGATTTACCGGAATGACCAAGTACCTGTAGGCGATCAGCCCAAGGACATCGAGC
 TTCAGATCAGAGAAGTATTCTCGTTTATCAGTAATCCCAATCCATTATCCTCGCCGCTACTGCTGC
 AAATACAGATATGGCAACATCAGAAGCACTCAAGATTTCCAGAGAGGTAGATCCAGATGGGCGCAGAACT
 CTAGCTGTAATCACTAACTTGATCTCATGGATGCGGGTACTGATGCCATGGATGTATTGATGGGAAGGG
 TTATTCAGTCAAGCTTGAATAATTGGAGTAGTTAACAGAAGCCAAGTGGATATTAACAATAAGAAGAG
 TGTAAGTATTCAATCCGTGATGAGTATGCTTTTCTTCAAAGAAGTACCCATCTCTGGCCAACAGAAAT
 GGAACAAAGTATCTTGCTAGGACCTGAATAGTTACTTATGCATCATATCAGAGATTGTTTACCAGAGC
 TGAAAACAAGAATAAATGTCTTAGCTGCTCAGTATCAGTCTCTTCAAATAGCTATGGTGAACCGGTGGA
 TGATAAAAGTGTACTTTACTCCAGCTTATTACCAATTTGCCACAGAGTATTGTAAACAGATTGAAGGA
 ACCGCAAAGTACATTGAACTTCTGAGCTATGCGGTGGTGTAGGATTTGTTATATTTCCATGAGACTT
 TCGGGCGAACCTTAGAATCTGTGGACCCACTAGTGGCCTTAACACTATTGACATCCTGACTGCCATCAG
 AAATGCTACTGGCCCCGCTGCTTTATTTGTGCCTGAAGTTTCATTTGAGTTACTGGTCAAACGTCAG
 ATTAAGCGTCTAGAAGAGCCAGCTACGGTGTGTGGAGCTGGTCCATGAGGAGATGCAGAGGATCATT
 AGCATTGTAGCAATTACAGCACACAGGAATTGTTACGGTTCCTAACTTACAGTATGCCATAGTTGAAGT
 AGTGACCTGTCTTCTTCTGAAAAGGTTGCCCGTGACAAATGAAATGGTGCATAACTTAGTGGCAATTGAG
 CTAGCGTATATCAACACAAAACACCCCGACTTTGCTGATGCTGTGGGCTAATGAACAATAATATAGAGG
 AACAAAGAAGAACAGGCTAGCAAGAGAGCTGCCTTACAGTGGATCACGGGACAAGTCCCATCTGCAGG
 TGGTGGGATTGGAGACGGTGGTACAGGAACCAACAACAGGCAACTGGAGAGGAATGCTGAAAACCTCAAAA
 GCTGAAGAATTACTTGTGAAGAAAAATCAAAACCAATTCGAATATGCCAGCAAGTCCACAGAAAGGCC
 ATGCTGTCAATTTGCTAGATGTGCCAGTCCAGTTGCAAGAAAAGTGTCTGCCCGAGAACAGCGAGATTG
 TGAGGTTATTGAAAGACTTATCAAAATCATATTTTCTAATTGTGCAAGAAAGAAATTTCAAGACAGTGTCCCA
 AAGGCAGTAATGCATTTTTGGTTAATCATGTGAAAGTACTCTTACAGAGTGAAGTGGTAGGGCAGCTGT
 ATAAGTCATCCTTATTAGATGACCTTCTGACTGAATCCGAGGACATGGCCCAACGAAGAAAAGAAGCAGC
 GGATATGCTGAAGGCATTACAAGGAGCCAGTCAAATTATTGCTGAAATCCGAGAGACTCATCTTTGG

ACGCGTACGCGGCCGCTCGAG - GFP Tag - GTTTAA

Protein Sequence: >MG210122 representing BC079635
 Red=Cloning site Green=Tags(s)

MEALIPVINKLQDVFNVTGADIQLPQIVVVGTSQSSGKSSVLESLVGRDLLPRGTGVVTRRPLILQLVHV
 SPEDKRKTTGEENGVEAEWGWKFLHTKNKLYTDFDEIRQEIENETERISGNNKGVSEPIHLKVFSPNVV
 NLTLVDLPGMTKVPVGDQPKDIELQIRELILRFISNPNSIILAVTAANTDMATSEALKISREVPDGRRT
 LAVITKLDLMDAGTDAMDVLMGRVIPVKLGIIGVVNRSQLDINNKKSVTDSIRDEYAFLLQKYPVSLANRN
 GTKYLARTLNRLMHHIRDCLPELKTRINVLAAQYQSLLSYGEPEVDDKSATLLQLITKFATEYCNTIEG
 TAKYIETSELGCGARICYIFHETFGRTLESVDPLGGLNTIDILTAIRNATGPRPALFVPEVSFELLVKRQ
 IKRLEEPSLRCVELVHEEMQRIIQHCSNYSTQELLRFPKLHDAIVEVVTCLLRKRLPVTNEMVHNLVAIE
 LAYINTKHPDFADACGLMNNNIEEQRRNRLARELPSAGSRDKVPSAGGGIGDGGQEPPTGNWRGMLKTSK
 AEELLAEEKSKPIPIIMPASPQKGHAVNLLDVPVPVARKLSAREQRDCEVIERLIKSYFLIVRKNIQDSVP
 KAVMHFLVNHVKDTLQSELVGQLYKSSLLDDLLTESEDMAQRRKEAADMLKALQGASQIIAEIRETHLW

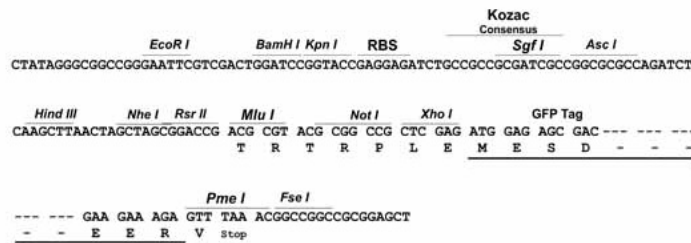
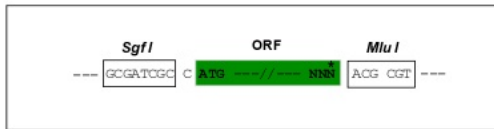
TRTRPLE - GFP Tag - V

Restriction Sites:

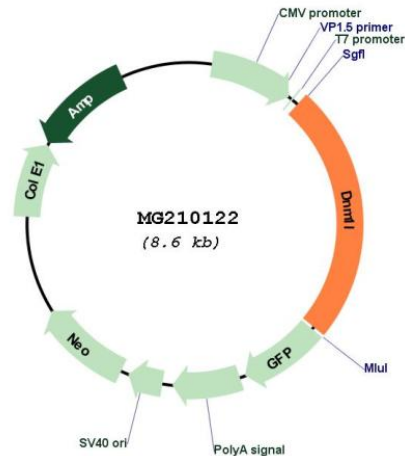
Sgfl-MluI

Cloning Scheme:

Cloning sites used for ORF Shuttling:



Plasmid Map:



ACCN: BC079635

ORF Size: 2099 bp

OTI Disclaimer: The molecular sequence of this clone aligns with the gene accession number as a point of reference only. However, individual transcript sequences of the same gene can differ through naturally occurring variations (e.g. polymorphisms), each with its own valid existence. This clone is substantially in agreement with the reference, but a complete review of all prevailing variants is recommended prior to use. [More info](#)

OTI Annotation: This clone was engineered to express the complete ORF with an expression tag. Expression varies depending on the nature of the gene.

Components: The ORF clone is ion-exchange column purified and shipped in a 2D barcoded Matrix tube containing 10ug of transfection-ready, dried plasmid DNA (reconstitute with 100 ul of water).

Reconstitution Method:

1. Centrifuge at 5,000xg for 5min.
2. Carefully open the tube and add 100ul of sterile water to dissolve the DNA.
3. Close the tube and incubate for 10 minutes at room temperature.
4. Briefly vortex the tube and then do a quick spin (less than 5000xg) to concentrate the liquid at the bottom.
5. Store the suspended plasmid at -20°C. The DNA is stable for at least one year from date of shipping when stored at -20°C.

RefSeq: [BC079635](#), [AAH79635](#)

RefSeq Size: 3872 bp

RefSeq ORF: 2099 bp

Locus ID: 74006

Cytogenetics: 16 A2

Gene Summary: This gene encodes a member of the dynamin family. The encoded protein is localized to the cytoplasm and mitochondrial membrane, is involved in mitochondrial and peroxisomal division, and is essential for mitochondrial fission. Alternative splicing results in multiple transcript variants. A related pseudogene has been identified on chromosome 2. [provided by RefSeq, Feb 2013]