

Product datasheet for **MG210102**

Acsl6 (BC016114) Mouse Tagged ORF Clone

Product data:

Product Type:	Expression Plasmids
Product Name:	Acsl6 (BC016114) Mouse Tagged ORF Clone
Tag:	TurboGFP
Symbol:	Acsl6
Synonyms:	MGC36650, LACS, mKIAA0837
Mammalian Cell Selection:	Neomycin
Vector:	pCMV6-AC-GFP (PS100010)
E. coli Selection:	Ampicillin (100 ug/mL)



[View online »](#)

**ORF Nucleotide
Sequence:**

>MG210102 representing BC016114
 Red=Cloning site Blue=ORF Green=Tags(s)

TTTTGTAATACGACTCACTATAGGGCGGCCGGGAATTCGTCGACTGGATCCGGTACCGAGGAGATCTGCC
 GCC**GCGATCGCC**

ATGCAGACCCAGGAGATCCTGAGGATCCTGCGGCTGCCGAGCTATCGGACTTGGCCAGTTTTTCCGCA
 GCCTCTCAGTACCACCCTCGTGAGTGTGGGTGCACTGGCTGCCGTCCTTGCCTACTGGCTCACTACCG
 GCCAAAGGCTTGAACACCATGCAACCTCCTGAAGCAGTCGGAAGAAGTGGAGACGGTGGTGGAGCC
 CGGCGATCTGTGATTGGGGTTGCACTCAATTGCTTACCATTACTATGACGATGCCCGACCATGTACC
 AGGTGTTCCGCCGTGGGCTTAGCATCTCAGGGAATGGACCCTGTCTTGGCTTCCGGAAGCCAGAGCAACC
 TTACCAGTGGCTGTCTACCAAGAGGTGGCCAAAAGGGCTGAATTTCTGGGGTGGGGCTTCTCCAGCAC
 GACTGTAAAGTGGGCACAGAGCAGTTTCGTTGGTGTTCGACAAAATCGGCCGGAGTGGATCATTGCCG
 AGCTGGCCTGCTACACGTATCCATGGTGGTGGTACCGCTCTACGACACCCTGGGCCAGGGTCTATCAG
 CTACATCAATACTGCGGACATTTGCACGGTAATCGTCGATAAACCCACAAGCAACACTTCTGCTG
 GAACACGTGGAGAGGAAGGAGACTCCGGCCCTCAAGCTGGTCATCCTCATGGAGCCGTTTGGAGCGCC
 TGAGAGAGAGAGAAAGAAGTGCGGGGTGGACATCAAGTCCATGCAGGCTATAGAGGACTGTGGCCGAGA
 GAATCATCATGCCCCGTGCCCCACGGCCTGATGACCTCTCCATCGTGTGTTTCAAGTGGTACAACA
 GGGAAACCCAAAGGTGCAATGCTCACCCACGGGAACGTGGTGGCCGATTTCTCGGGCTTTCTGAAAGTGA
 CAGAGAAAGTGATCTTCCGAGACAGGACGATGTGCTCATCTCCTTCTGCTCTGGCTCACATGTTTGA
 GAGAGTGATCCAGTCTGTGTCTACTGCCACGGAGGGCGCGTGGGCTTCTCCAGGGAGACATCCGCCTC
 CTCTCAGATGACATGAAGGCTCTCCGCCCTACCATCTCCCTGTGGTCCCACGGCTGCTGAATCGGATG
 ATGACAAGATCTTCCACCAGGCAGACACCTCACTAAAGCGCTGGCTCCTGGAGTTTGCAGCAAAGCGCAA
 GCAGGCAGAGGTCGGAGCGGAATCATCAGAAACAATAGTATCTGGGATGAACTCTCTTTAATAAGATT
 CAGGCCAGTCTTGGTGGCATGTGAGGATGATTGTCACCTGGAGCAGCCCCGCGTCACCAACGGTTCTGG
 GATTCTACGAGCAGCTCTGGGGTCCAGGTCTATGAAGGTTATGGGCAAACTGAATGCACAGCTGGGTG
 TACCTTACAACGCCAGGGGACTGGACATCAGGGCATGTAGGGCACCTCTGCCCTGCAACCACATCAAG
 CTGGTCGATGCAGAGGAACCACTACTGGACCTGCAAAGGAGAAGGAGAGATATGTGTAAAGGACCAA
 ATGTGTTCAAAGGCTACTTAAAAGACGAGGACAGGACAAAGGAGGCCCTGGACAGCGACGGCTGGCTTCA
 CACTGGAGACATTGGGAAATGGCTGCCGGAGGGAACACTCAAAATCATTGATCGGAAAAAGCACATATTT
 AAAGTGTCTCAGGGGAATATGTTGCGCCAGAGAAGATCGAGAACATCTACATCCGGAGTGAGCCTGTGG
 CACAAATCTACGTCCACGGGACAGCTTAAAGGCCTTTTGGTTGGCATTGTCGTGCCTGACCCTGAAGT
 CATGCCTTCTGGGCTCAGAAGAAAGGAATCGAAGGGACCTATCAGGAACTCTGCATGAAAAAGGAATTG
 AAGAAAGCCATTCTGGATGACATGGTGTGCTGGGAAAGAAAGCGGACTGCATTCTTTGAAACAGGTTA
 AAGCCATTTACATCCATTGTGACATGTTCTGTTCAAAATGGTCTGCTGACACCAACACTAAAGGCTAA
 GAGACCGGAGCTGAGAGAGTACTTCAAAAAGCAAAATAGAAGAGCTTTACTTAGTCTCCGTG

ACGCGTACGCGGCCGCTCGAG - GFP Tag - GTTTAA

Protein Sequence: >MG210102 representing BC016114
 Red=Cloning site Green=Tags(s)

MQTQEILRILRLEPELSDLGQFFRSLSATTLVSVGALAAVLAYWLTHRPKALQPPCNLLKQSEEVEDGGGA
 RRSVIGGCTQLLTHYYDDARTMYQVFRRLSISGNGPCLGFRKPEQPYQWLSYQEVAKRAEFLGSGLLQH
 DCKVGTQEVGVFAQNRPEWIIAELACYTYSMVVPLYDTLGPISYSYIINTADICTVIIDKPHKATLLL
 EHVERKETPGLKLVILMEPFEDALRERGGKCGVDIKSMQAIEDCGRENHHAPVPPRPDDLIVCFSTGTT
 GNPKGAMLTGHNVVADFSGFLKVTEKVIFFRQDDVLISFLPLAHMFERVIQSVVYCHGGRVGFQGDRL
 LSDDMKALRPTIFPVVPRLLNRMYSKIFHQADTSLKRWLEFAAKRKQAEVRSIGIIRNNSIWDELFFNKI
 QASLGGHVRMIVTGAAPASPTVLGFLRAALGCQVYEGYQTECTAGCTFTTPGDWTS GHV GAPLPCNHK
 LVDAEELNYWTKGEGEICVKGNVFKGKYLKDEDRTKEALDSGWLHTGDIGKWLPEGTLKIIDRKKHIF
 KLAQGEYVAPEKIENIYIRSEVVAQIYVHGDLSKAFLVGIVVPDPEVMPSWAQKKGIEGTQELCMKKEL
 KKAILEDMMVMLGKESGLHSFEQVKAIYIHCDMFSVQNGLLTPTLAKRPELREYFKKQIEELYLVS

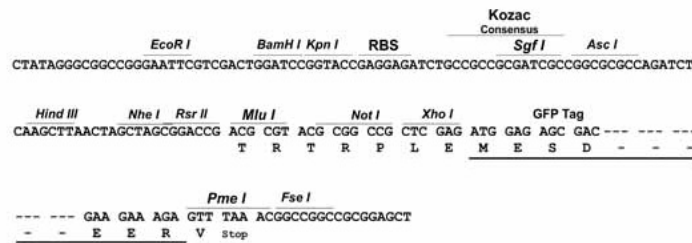
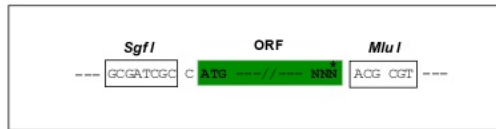
TRTRPLE - GFP Tag - V

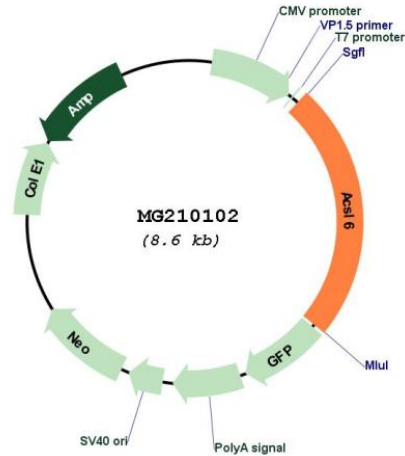
Restriction Sites:

SgfI-MluI

Cloning Scheme:

Cloning sites used for ORF Shuttling:



Plasmid Map:


ACCN: BC016114

ORF Size: 2093 bp

OTI Disclaimer: The molecular sequence of this clone aligns with the gene accession number as a point of reference only. However, individual transcript sequences of the same gene can differ through naturally occurring variations (e.g. polymorphisms), each with its own valid existence. This clone is substantially in agreement with the reference, but a complete review of all prevailing variants is recommended prior to use. [More info](#)

OTI Annotation: This clone was engineered to express the complete ORF with an expression tag. Expression varies depending on the nature of the gene.

Components: The ORF clone is ion-exchange column purified and shipped in a 2D barcoded Matrix tube containing 10ug of transfection-ready, dried plasmid DNA (reconstitute with 100 ul of water).

Reconstitution Method:

1. Centrifuge at 5,000xg for 5min.
2. Carefully open the tube and add 100ul of sterile water to dissolve the DNA.
3. Close the tube and incubate for 10 minutes at room temperature.
4. Briefly vortex the tube and then do a quick spin (less than 5000xg) to concentrate the liquid at the bottom.
5. Store the suspended plasmid at -20°C. The DNA is stable for at least one year from date of shipping when stored at -20°C.

RefSeq: [BC016114](#), [AAH16114](#)

RefSeq Size: 2513 bp

RefSeq ORF: 2093 bp

Locus ID: 216739

Cytogenetics: 11 32.13 cM

Gene Summary: Activation of long-chain fatty acids for both synthesis of cellular lipids, and degradation via beta-oxidation. Plays an important role in fatty acid metabolism in brain and the acyl-CoAs produced may be utilized exclusively for the synthesis of the brain lipid (By similarity).
[UniProtKB/Swiss-Prot Function]