

Product datasheet for **MG210100**

Tns4 (NM_172564) Mouse Tagged ORF Clone

Product data:

Product Type:	Expression Plasmids
Product Name:	Tns4 (NM_172564) Mouse Tagged ORF Clone
Tag:	TurboGFP
Symbol:	Tns4
Synonyms:	9930017A07Rik; AA589547; AU016405; Cten
Mammalian Cell Selection:	Neomycin
Vector:	pCMV6-AC-GFP (PS100010)
E. coli Selection:	Ampicillin (100 ug/mL)



[View online »](#)

ORF Nucleotide
Sequence:

>MG210100 representing NM_172564
Red=Cloning site Blue=ORF Green=Tags(s)

TTTTGTAATACGACTCACTATAGGGCGGCCGGGAATTCGTCGACTGGATCCGGTACCGAGGAGATCTGCC
GCC**CGGATCGCC**

ATGTCCAGCTCTCTGCTGGCTGGAGGTCACATGGTCAGCTTGACTCCCTGTGAGGAATCCAGGATGGCCC
TGCACCCAAACCCAGCCCTGGCCTCCCAGCTCTGTGTCCTTACTACACCACAGAGAGCTGGGGAACCCA
GCCTCTGATGGCCCCACACTCCGCAAAGGCAGCTCCGACAGGCTCCAGCAGGCCAGCAGGCTGAAGCC
AGAGCTCACTGCCTCCTCAGGGCCCTGGGGAGCAGGCCCTCAGGGGCTCGCAGGATCTGGAATCTTGCA
TTGACTTCTCCCTGGAGGCCCTCAACCAGATGATCCTAGAGATCGACCCTACTTTCCAGTTACTTCCCTC
TGGGACTGCTGGTCCCAGGCTGAGTCTACCAACAGTATCATGTCAAGGAACAAGAAGGAGGAACCCGAA
GCCTTAGATAAAAGTACATCGAAGTGACCTCCACCAGATCAAGATACCTTGACGGTCCCCAACGCTGCT
CCAGCCGTGTGCCACCCACCATTGGCTCCCGCGCAGTGGCAGCCTTCTCTCCAGGACATCCC
CCGAGAGACCCGACGAGCAGCAACGAGAGCCTCATCTTCTGGAACAGGGCAGGGTCCCTCTCTCT
CTACCCCTTCTCCCTTAGCAATGCCATCCCTTGCCGAGAAAGCAGGACCTCCGGCTCTCCACTGGCAA
CTCCTCCAGGCTGGGAGAAAGGGCTCAGGGCCCCACAGCGGGGACGAGGGTCTCTATACTGTACGCCAG
CCCTGTATCGGATGTCAGCTATGTGTTGGAAGCAATCAGTCCCTCCCCACTCAAGCCTCTCCAGCTAT
CCGTCACTTCTAGATCCTTGGGAAGTCCAGCCAGCTCATCTCCAGCCTCCACAGCCTGGACCGAGGGT
CTCAGTGTGGGAGACCTAGTGTGCCAGGCTCCTAGTAACCCATACTGGGCATGGGCCAGCCCCAAGC
AGTGCAGTCTACTCCAGTGGCTAAGGAGCAGGCTAGTAGCTGCCCCGATCTGTCAACCACTCCATGGCG
GACATACCCATAGTGTCTCATCAATGGGAGCCCAGAACCACAGTCTCCCCAGCCAGCCGACACCCAGGAC
ACCAGGACTCTGTCCAGTCTAGGGTTACATCTCCAGCCACCTCTGTCAAGCCATTAAGAGCCCCAGCAA
GACTCTGCCAGATGTTCCCTCTCCCTGCATCTCCAGATGGTCTGCCAAGGACATGCAGCCACCATGAAG
TTCGTGATGGACACATCAAAGTATTGGTTAAGCCAAGCATCACTCGAGAGCAAGCAATCAATCTCTGA
GGACGGAGAAGCCGGTGCCTTTGTCTCAGGGACAGTTCCTCCTACAGAGGCTCCTTCGGCCTTGCCT
GAAGGTACAGGAGACTTCCGCATCTGCTCAAACCCAGCCAGGCGAGGACAGCAGTACCTTATCCGTAC
TTCCTGATTGAGTCTTCGGCCAAAGGAGTACATCTGAAAGGAGCAGATGAGGAGCCCTACTTTGGGAGCC
TCTTCTCCTCGTGTGCCAGCACTCCATTATGGCCCTGGCCCTGCCCTGCAAACCTACCATCCCACAGAA
AGAAGTGGGAGGTGCAGAGCCAGCATCGGACTCCCCACACACGGCCAGACCTCCTGCCTGAAGATATCA
GCCGGTTGCCACACTGTACCTGAGTTCTGTGAGTGTGGAGACCCTGAGCGGAGCCCTGGCTGTGCAGA
AGGCTATCTCAGTCATCTTGAGAGGGATGTCTCCCCACACCCACTGTGTCCTTCAAAGTCACTGA
ACAGGGCATTACTCTGACAGACGTCAAAGGAAGGTGTTCTTCCGACGGCACTACCCACTCAGCGCCCTC
CGCTTCTGTGGAATGGACCCGAGCAACGGAAGTGGCAGAAGTACTGCAAGCCTTCCAGGATCTTTGGGT
TTGTGGCCAAGAGCCAGACAGAACCACAAGAGAACGTGTGCCACCTCTTCGACAGTACGATGCGGTCCA
GCCAGTCTCCAGGTCATCAGCCTAGTACTGCTCTGCTTCAGGACACAGAAAGGATG

ACGCGTACGCGGCCGCTCGAG - GFP Tag - GTTTAA

Protein Sequence: >MG210100 representing NM_172564
 Red=Cloning site Green=Tags(s)

MSSSLLAGGHMVSLTPCEESRMALHPTSPGLPALCPYYTTESWGTQPLMAPTLRKGSSDRLQQAQQA
 RAHCLLQGPGEQASGASQDLESCIDFSLEALNQMLEIDPTFQLLPSTAGPQAESTNSIMSRNKKEE
 ALDIKYEIVTSTRSRYLDGPQRCSPPCATPPFGSPRSGSLFLSRDIPRETRSSSNESLIFSGNQGRG
 PSLTPSSLSNAIPCRESRITSGSPLATPPGWEKGLRAPQRGSRVILSASPVSVDVSYVFGSNQSL
 PHSSLSYPSSSRSLGSPASSSSSLHSLDRGSQCGRPSDAQAPSNPILGMGQPQAVQSTPVAKEQ
 ASSCPASVTNSMADIPIVLINGSPEPQSPPAQRTPGHQDSVQSRVTSPSHLQQAIKSPSKTL
 PDVPLPASPDGPAKDMQPTMKFVMDTSKYWFKPSITREQAINLLRTEKPGAFVIRDSSSYRGSFGL
 LKVVQETSASAPNRPGEDSSDLIRHFLIESSAKGVHLKGADEEYPFGSLSSFVQHSIMALAL
 PCKLTIPQKELGGAEPASDSPHTHGQTSCLKISAGCHTLYLSSVSVETLSGALAVQKAI
 SVILERDVLPTPTVVHFKVTEQGITLTDVQRKVFRRHYPLSALRFCGMDPEQRKWQKYCK
 PSRIFGFVAKSQTEPQENVCHLFAEYDAVQPASQVIVLVTALLQDTERM

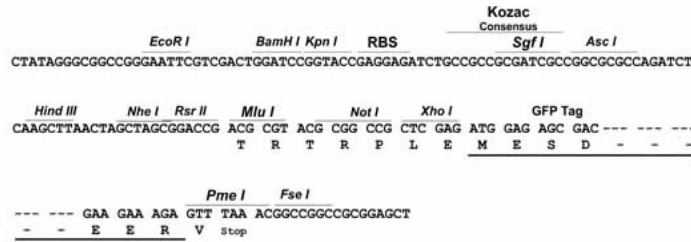
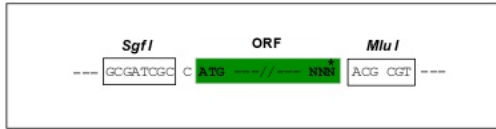
TRTRPLE - GFP Tag - V

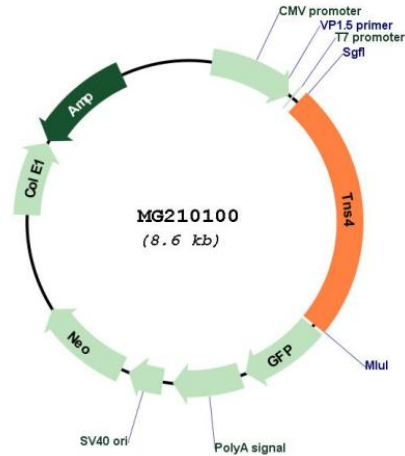
Restriction Sites:

Sgfl-MluI

Cloning Scheme:

Cloning sites used for ORF Shuttling:



Plasmid Map:


ACCN: NM_172564

ORF Size: 2088 bp

OTI Disclaimer: The molecular sequence of this clone aligns with the gene accession number as a point of reference only. However, individual transcript sequences of the same gene can differ through naturally occurring variations (e.g. polymorphisms), each with its own valid existence. This clone is substantially in agreement with the reference, but a complete review of all prevailing variants is recommended prior to use. [More info](#)

OTI Annotation: This clone was engineered to express the complete ORF with an expression tag. Expression varies depending on the nature of the gene.

Components: The ORF clone is ion-exchange column purified and shipped in a 2D barcoded Matrix tube containing 10ug of transfection-ready, dried plasmid DNA (reconstitute with 100 ul of water).

Reconstitution Method:

1. Centrifuge at 5,000xg for 5min.
2. Carefully open the tube and add 100ul of sterile water to dissolve the DNA.
3. Close the tube and incubate for 10 minutes at room temperature.
4. Briefly vortex the tube and then do a quick spin (less than 5000xg) to concentrate the liquid at the bottom.
5. Store the suspended plasmid at -20°C. The DNA is stable for at least one year from date of shipping when stored at -20°C.

RefSeq: [NM_172564.1](#), [NP_766152.1](#)

RefSeq Size: 4755 bp

RefSeq ORF: 2091 bp

Locus ID: 217169

UniProt ID: [Q8BZ33](#)

Cytogenetics: 11 D

Gene Summary: May be involved in cell migration, cartilage development and in linking signal transduction pathways to the cytoskeleton May promote apoptosis, via its cleavage by caspase-3. Cytoplasm, cytoskeleton.[UniProtKB/Swiss-Prot Function]