

## Product datasheet for **MG210095**

### **Osbp16 (BC022908) Mouse Tagged ORF Clone**

#### **Product data:**

|                           |  |
|---------------------------|--|
| Product Type:             | Expression Plasmids                      |
| Product Name:             | Osbp16 (BC022908) Mouse Tagged ORF Clone |
| Tag:                      | TurboGFP                                 |
| Symbol:                   | Osbp16                                   |
| Synonyms:                 | MGC30542, ORP-6, mKIAA4128               |
| Mammalian Cell Selection: | Neomycin                                 |
| Vector:                   | pCMV6-AC-GFP (PS100010)                  |
| E. coli Selection:        | Ampicillin (100 ug/mL)                   |



[View online »](#)

ORF Nucleotide  
Sequence:

>MG210095 representing BC022908  
Red=Cloning site Blue=ORF Green=Tags(s)

TTTTGTAATACGACTCACTATAGGGCGGCCGGAATTCGTGCGACTGGATCCGGTACCGAGGAGATCTGCC  
GCC**CGATCGCC**

ATGCAGCCCAACAGCTTTCCATGGCAGTCGCCGTTACCATGCAGTAACAGCCTCCCTGCGACCTGCACAA  
CTGGGCAGAGTAAAGTGGCAGCCTGGCTGCAGGACTCAGAAGAAATGGACAGGTGTGCAGAAGATCTTGC  
ACACTGCCAGTCAAACCTTGTGGAACCTAGCAAGCTCCTGCAAAACTTGAGATCCTTCAGAGAAGTTCAG  
TCGGCGCCTAACTTCACTGACATGCAGGCTAACTGTGTAGATATTTCAAAGAAAGACAAGCGGGTACAA  
GACGCTGGAGGACAAAAGTGTGAGCAAGATACAAAAATACAGCTCCAGGTTCTTTTCAGCGCCACCAT  
GTCACCCGTGCGTCTGCACTCCTCAACCCCAACCTTTGTGCGGACATTGAGTTCAGACCCCTCCTAGC  
CACCTCACCGACCCTCTGGAAAGTTCACGGATTATACCAAGCTACAAGAAGAATTTGTCTAATTGCAC  
AGAAAGTGCATTCTCTTGAAGTCTGCATTTAACAGCATAGCTATAGAGAAGGAGAAGCTGAAGCAGGT  
GGTCTCGGAGCAAGATCACAAACAAGGCCACAGCACACAGATGGCCAGACTCCGGCAGTCACTGTACAG  
GCATTAACCAGAACGCTGAGCTCCGGAGTCGGCTGAACAGAATACACTCAGAGTCTACCATTTGTGATC  
ACGTTGTCAAGTAAATATTATCCCTAGCCCCGATGAGCCTGGTGAAGCAATCCATGTCAGCCTCCCTCT  
GTCACAGCAGGTGGCCAACGAGAGCCGCTCTCCATGTCAGAATCCGTGTGAGAATCTTCGATGCCCAA  
GAGGTGCTCCTGTCTGCAAGTCAATCAGAGAATGAGGCTTCCGATGATGAGTCTACATCAGCGACGTGA  
GTGACAACATATCTGAGGACAACACCAGTGTGCGCCGACAACATTTCTCGGCAAACTCTGAATGGGGAGCT  
CACAGGAGGCGCCTTCCGCAATGGCCGTCGCACCTGCCTGCCTCCTTGCCCGGACACCAGTAACATT  
AACCTGTGGAATATCTTGAGGAACAACATTGGCAAAGACCTGTGGAAGGTCTCCATGCCCGTGAAGTCA  
ACGAGCCCTCAACACCCTGCAGCACCTCTGTGAGGAAATGGAATACAGTGAAGTCTCCATGGACAAGGCTC  
AGAGACCGACGACCCCTACGAGAGGATGGTTCTCGTGCCTTTGCAGTCTCAGGGTACTGTTCCACC  
TACTTCCGAGCAGGAAGCAAGCCATTCAATCCGGTCTGGGGGAGACCTATGAATGCATAAGAGAAGATA  
AGGGGTTTCGGTCTTCTCAGAACAAGTTAGCCATCATCCACCCATTTCTGCCTGTCACTGTGAATCCAA  
GAATTTTGTGTTTGGCAAGATATCAGATGGAAAAATAAGTTCTGGGAAAGTCCATGGAAATCCTGCCT  
GTCGGAACCTGAACGTCACGCTTCCAAAATATGGGGTACTATGTGTGAATAAAGTCAACACGTCGA  
TACACAATATCCTGAGTGGGAGGAGATGGATCGAGCACTACGGTGAAGTGACCCTTAGAAATACAAAAG  
CAGTGTTCGATTTGCAAACTCACGTTTGTCAAGGTGAATTACTGGAACCTCAACGTGAATGAAGTCCAG  
GGGTGGTGATAGACCAGGAGGGAAGGTGGTGCACCGGCTGTTGGGAAATGGCAGGAGGACTCTACT  
GCGGGGTGGCCCTCGGCAAGTGCATCTGGAGACCAGTTCTCTGCCAACCACTATGAGCTCTACTA  
TGCTTTACAAGATTTGCTGTGGAGCTCAATGAGTTGGACCCCGTCTGAAGGACCTCTTCCCCCACA  
GATGCCGATTCCGGCCAGATCAAAGGTTTTTGGAAAGGGAACCTAGAAGCCGAGCCGAGAGAAAC  
AAAGAGTTGAGGAACTCAAAGATCGCGAAGACGCTACATGGAGGAAAACAACCTTGAACATATACAAA  
ATTTTTAAAGCTTGTGTCTGCTCAGATTTGGCCCACTGTGGTTAGACCAAAGA

**ACGCGT**ACGCGGCCGCTCGAG – GFP Tag – GTTTAA

**Protein Sequence:** >MG210095 representing BC022908  
 Red=Cloning site Green=Tags(s)

MQPNSFPWQSPLPCSNSLPATCTTGQSKVAAWLQDSEEMDRCAEDLAHCQSNLVELSKLLQNLEILQRTQ  
 SAPNFTDMQANCVDISKDKRVTRRWRTKSVSKDTKIQLQVPPSATMSPVRLHSSNPNCADIEFQTPPS  
 HLTDPLESSTDYTKLQEEFCLIAQKVHSLKSAFNSIAIEKEKQVSEQDHNKGHSTQMARLRQSLSQ  
 ALNQNAELRSLNRIHSESTICDHVSVNIIPSPDEPGEQIHVSLPLSQQVANESRLSMSESVSEFFDAQ  
 EVLLSASSSENEASDDESYISDVSDNISEDNTSVADNISRQILNGELTGGAFRNGRRTCLPAPCPDTSNI  
 NLWNILRNNIGKDL SKVSMPVELNEPLNLTQHLCEEMEYSELLDKASETDDPYERMVLAFAVSGYCST  
 YFRAGSKFPNPVLGETYECIREDKGRFFSEQVSHHPPISACHCESKNFVFWQDIRWKNKFWGKSMEILP  
 VGTLNVTLPKYGDYYVWNVVTTCTIHNILSGRRWIEHYGEVTLRNTKSSVCICKLTFVKVNYWNSNVNEVQ  
 GVVIDQEGKVVHRLF GKWHEGLYCGVAPSAKCIWRPGSLPTNYELYYGFTRFAVELNELDPVLKDLLPPT  
 DARFRPDQRFLEEGNLEAAAAEKQRVEELQRSRRRYMEENNLEHIPKFFKACVCSDLAPLWLDQR

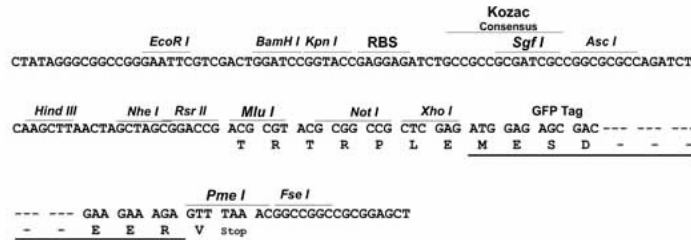
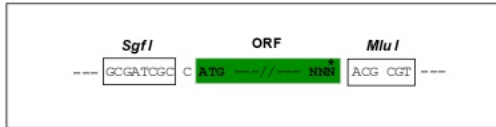
TRTRPLE - GFP Tag - V

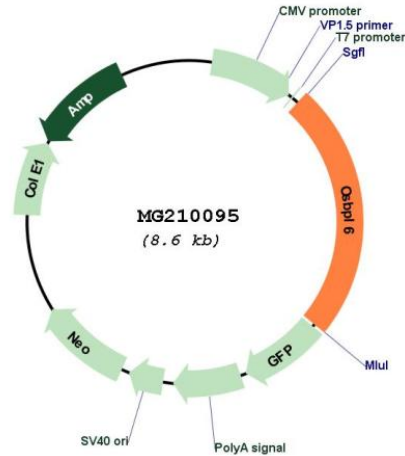
**Restriction Sites:**

SgfI-MluI

**Cloning Scheme:**

Cloning sites used for ORF Shuttling:



**Plasmid Map:**


**ACCN:** BC022908

**ORF Size:** 2087 bp

**OTI Disclaimer:** The molecular sequence of this clone aligns with the gene accession number as a point of reference only. However, individual transcript sequences of the same gene can differ through naturally occurring variations (e.g. polymorphisms), each with its own valid existence. This clone is substantially in agreement with the reference, but a complete review of all prevailing variants is recommended prior to use. [More info](#)

**OTI Annotation:** This clone was engineered to express the complete ORF with an expression tag. Expression varies depending on the nature of the gene.

**Components:** The ORF clone is ion-exchange column purified and shipped in a 2D barcoded Matrix tube containing 10ug of transfection-ready, dried plasmid DNA (reconstitute with 100 ul of water).

**Reconstitution Method:**

1. Centrifuge at 5,000xg for 5min.
2. Carefully open the tube and add 100ul of sterile water to dissolve the DNA.
3. Close the tube and incubate for 10 minutes at room temperature.
4. Briefly vortex the tube and then do a quick spin (less than 5000xg) to concentrate the liquid at the bottom.
5. Store the suspended plasmid at -20°C. The DNA is stable for at least one year from date of shipping when stored at -20°C.

**RefSeq:** [BC022908](#), [AAH22908](#)

**RefSeq Size:** 2688 bp

RefSeq ORF: 2087 bp  
Locus ID: 99031  
Cytogenetics: 2 C3  
Gene Summary: Weakly binds 25-hydroxycholesterol.[UniProtKB/Swiss-Prot Function]