

## Product datasheet for **MG210093**

### BC002230 (BC025577) Mouse Tagged ORF Clone

#### Product data:

Product Type:	Expression Plasmids
Product Name:	BC002230 (BC025577) Mouse Tagged ORF Clone
Tag:	TurboGFP
Symbol:	BC002230
Synonyms:	6720454P05Rik
Mammalian Cell Selection:	Neomycin
Vector:	pCMV6-AC-GFP (PS100010)
E. coli Selection:	Ampicillin (100 ug/mL)



[View online »](#)

**ORF Nucleotide Sequence:**

>MG210093 representing BC025577  
 Red=Cloning site Blue=ORF Green=Tags(s)

TTTTGTAATACGACTCACTATAGGGCGGCCGGGAATTCGTCGACTGGATCCGGTACCGAGGAGATCTGCC  
 GCC**CGCATCGCC**

ATGTTTGGGCTCTTTCTTCAGCAGTGCCACTTTCTACGGCAGGCTGGCCACTCAGAGAAGGTCATCTCTT  
 TGTTCAGGCCATGGTTGACTTCACCTTCTCAAGCCTGACAGTGTGAAAGAGCTGCCTACTAAAGTACA  
 GGTGGAATTTCTTGGACCTTCTGGGACAGCGGAGAACCACGCGTTGGGAGAAGGGAGCCGAGGCTGG  
 CGGGCGTGGATGCACCAACAGGAGCGAGGTGGCTGGGTGCTCATCACCCAGATGAGGATGACGAGGAGC  
 CCGAAGAGGAGGACCAGGAGATAAAAGACAAGACCCTGCCCGGTGGCAGATCTGGCTTGTCTGTTGAGCG  
 TTCTCGAGACCAGAGGCACTGGCGTCCCTGGCGCCCTGATAAGACCAAGAAGCAAACGGAGGAAGACTGT  
 GAGGACCTGAGAGACAGGTGCTGTTTGTGACATTGGGCAATCTTTGATCAGACTTTCCAGCCAGACC  
 TTCAGTCCAGCTCATCCAGGCCCTTCTGCAGTTCCTGGGCGTGCCTCCGGCTTCTGCCCCAGCCTC  
 CTGCCCTTACCTGGCCATGGACGAGAGCAGCATCTTTGAGAGTGAACCTTATGATGAAAAGCCCTGACT  
 TACTTCAACCCTTCTTTTCGGGCATTAGCTGTGTCGGCTCCATGGAACAGTTGGGTACCCCTCGCTGGA  
 CCAAAGGTCACAACCGAGAGGGCGAGGAGTTTGTCCGCAATGTCTCCACCTGGTGTGCTTTGTCTCGC  
 AGGCAAGCAGAAGTCCCAGGTCTGCCTCTCCTGGTTACGGTACGAGATTGCAAAGGTCATTTGGTGTCTA  
 CACACTAAAAGAAGCGATTGAAGTCTCAGGAAAAGAGCTGCAAAAACTAGCCAAGAATCTCCTCAAGG  
 AGCCAGAAAACCGCAACAACCTTCTGCCTCTGGAAGCAGTATGCACACCTGGAGTGGTTGTCTCGGTAACAC  
 AGAGGATGCCAGAAAAGTGTTCGACACAGCACTCAGCATGGCAGGCAGCAGCGAGCTGAAGGACCGTGAA  
 CTCTGCGAGCTCAGTCTGCTCTATGCCAGCTGGAGATGGAAGTGTCCCGGACTCAAGAGGAGCCACCA  
 CAGGCCGAGCGGTCCACATATTAACACGACTGACGGAGAGCAGTCCCTACGGGCCCTACACGGGGCAGGC  
 CTCGTCCACCCAGGTGCTGAAAGCTCGGAAGGCTTACGAGCTCGCGCTGCAGGACTGCCTGGGCCAGAGC  
 TGTGCCTCCAGCCAGCTCCTGCAGAGGCTTGGACTGCCTGGGTAGCTTGGTCCGATGCTTTATGCTCT  
 TCCAGTATTTGACTGTGGGCATTGATGCTGCTGTGCAGATATACGGAAGGGTGTTCGCAAGCTGAAGGG  
 CTCTGCTCGCTTAGAAGACCCAGGGCCAGAGGACAGCACCAGCTCCAGAGTTTGACCAATGTGCTCGAG  
 GCTGTCAGCATGATGCACACAAGCCTGCTGCGATTCCACATGAACGTTTGTGTTACCCTCTGGCTCCAC  
 TCCGAGAGACCTCTCCGATGCTTAAAGCTGTATCCGGGCAACCAGGTTCTTTGGAGGGCTTATGTACA  
 GATTCAGAATAAGTCCCACAGTGCTAACAAGACCAGAAGGTTCTTTGACACAGTTACTAGGTCTGCCAAA  
 CATTTGGAGCCTTGGCTATTTGCAATCGAAGCTGAGAAGCTGAGGAAAAGCTAGTGAATCTGTTCAGA  
 GGGTAGGAGGCAGAGAGGTCCATGCAACAATCCCGAGACTGGCCTTACGCATCGCATCAGAGCTTTGTT  
 TGAATAATGCGATTTCGGAGCGACAAGGGCAACCAGTGTCCCTACTGTGGAGGATGATTTTGAATTTTTTG  
 GTTTCCTTAGGAAAACAAAGAAAGAAAGCAAGGCGTGTCTACAAGGCCCTCCAGAGCTGTCTTGGGCAA  
 AGGTGCTATACATGGACGCCATGGAGTATTTCCAGACGAGCTGCAGGAGATCCTGGACGTGATGCCGA  
 GAAGGAGCTCCGTGTGCGCTGCCCTTGGAGGCTGGAGCTGCTGCTGGAGGAT

AG**CGGACCG**ACGCGTACGCGGCCGCTCGAG - GFP Tag - GTTTAA

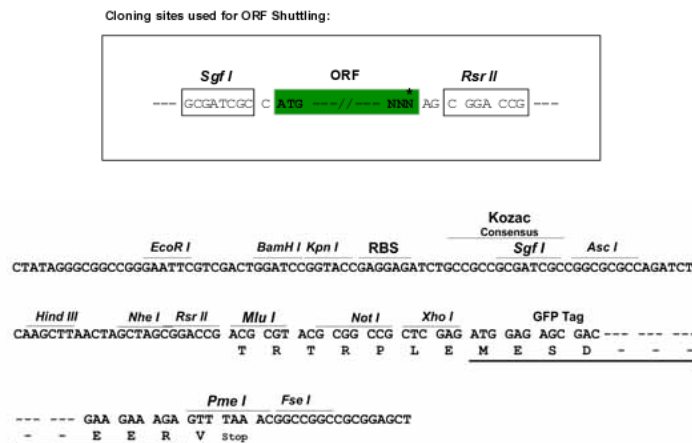
**Protein Sequence:** >MG210093 representing BC025577  
Red=Cloning site Green=Tags(s)

MFGLFLQQCHFLRQAGHSEKVISL FQAMVDFTFFKPD SVKELPTKVQVEFFPFWDSGEP RVGEGKARGW  
 RAWMHQQRERG GWLITPDEDDEEPEEEDQEIKDKTLPRWQIWLAVERSRDRHWRPWRPDKTKKQTEEDC  
 EDPERQVLFDDIGQSLIRLSSPD LQFQLIQAF LQFLGVP SGFLPPASCLYLAMDESSIFESELYDEKPLT  
 YFNPSFSGISCVGSMEQLGHPRWTKGHNREGEEFVRNVFHLV LPLLAGKQKSQVCLSWLRVEIAKVIWCL  
 HTKKRRLKSQGKSCKKLAKNLLKEPENRNNFCLWKQYAHLEWLLGNTEDARKVFD TALSMAGSSELKDRE  
 LCELSLLYAELEMELSPDSRGATTGRAVHILTRLTESSPYG PYTGQVSSTQVLKARKAYELALQDCLGQS  
 CASSPAPAEALDCLGSLVRCFMLFQYLTVGIDAAVQIYGRVFAKLKGSARLEDPGPE DSTSSQSLTNVLE  
 AVSMMHTSLLRFHMNVCVYPLAPLRETLSDALKLYPGNQVLWRAYVQIQNKSHSANKTRRFDTVTRSAK  
 HLEPWLFAIEAEKLRKKLVE SVQRVGGRE VHAIPETGLTHRIRALFENAIRSDKGNQCP LLWRMYLNFL  
 VSLGNKERSKGVFYKALQSCPWAKVLYMDAMEYFPDELQEILDVMTEKELRVRLPLEE LLELLED

SGPTRRRLE - GFP Tag - V

**Restriction Sites:** SgfI-RsrII

**Cloning Scheme:**



**ACCN:** BC025577

**ORF Size:** 2085 bp

**OTI Disclaimer:** The molecular sequence of this clone aligns with the gene accession number as a point of reference only. However, individual transcript sequences of the same gene can differ through naturally occurring variations (e.g. polymorphisms), each with its own valid existence. This clone is substantially in agreement with the reference, but a complete review of all prevailing variants is recommended prior to use. [More info](#)

**OTI Annotation:** This clone was engineered to express the complete ORF with an expression tag. Expression varies depending on the nature of the gene.

**Components:** The ORF clone is ion-exchange column purified and shipped in a 2D barcoded Matrix tube containing 10ug of transfection-ready, dried plasmid DNA (reconstitute with 100 ul of water).

**Reconstitution Method:**

1. Centrifuge at 5,000xg for 5min.
2. Carefully open the tube and add 100ul of sterile water to dissolve the DNA.
3. Close the tube and incubate for 10 minutes at room temperature.
4. Briefly vortex the tube and then do a quick spin (less than 5000xg) to concentrate the liquid at the bottom.
5. Store the suspended plasmid at -20°C. The DNA is stable for at least one year from date of shipping when stored at -20°C.

**RefSeq:** [BC025577.1](#)

**RefSeq Size:** 2358 bp

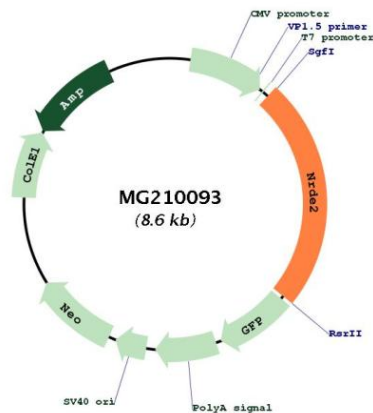
**RefSeq ORF:** 2087 bp

**Locus ID:** 217827

**Cytogenetics:** 12 E

**Gene Summary:** Protein of the nuclear speckles that regulates RNA degradation and export from the nucleus through its interaction with MTREX an essential factor directing various RNAs to exosomal degradation. Changes the conformation of MTREX, precluding its association with the nuclear exosome and interaction with proteins required for its function in RNA exosomal degradation. Negatively regulates, for instance, the degradation of mRNAs and lncRNAs by inhibiting their MTREX-mediated recruitment to nuclear exosome. By preventing the degradation of RNAs in the nucleus, it promotes their export to the cytoplasm. [UniProtKB/Swiss-Prot Function]

## Product images:



Circular map for MG210093