

Product datasheet for **MG210081**

Foxp2 (BC058960) Mouse Tagged ORF Clone

Product data:

Product Type:	Expression Plasmids
Product Name:	Foxp2 (BC058960) Mouse Tagged ORF Clone
Tag:	TurboGFP
Symbol:	Foxp2
Synonyms:	2810043D05Rik; AI449000; CAG-16; D0Kist7
Mammalian Cell Selection:	Neomycin
Vector:	pCMV6-AC-GFP (PS100010)
E. coli Selection:	Ampicillin (100 ug/mL)



[View online »](#)

ORF Nucleotide Sequence:

>MG210081 representing BC058960
 Red=Cloning site Blue=ORF Green=Tags(s)

TTTTGTAATACGACTCACTATAGGGCGGCCGGAATTCGTCGACTGGATCCGGTACCGAGGAGATCTGCC
 GCC**GCGATCGCC**

ATGATGCAGGAATCTGCGACAGAGACAATAAGCAACAGTTCAATGAATCAAAATGGAATGAGCACTTTAA
 GCAGCCAATTAGATGCTGGCAGCAGGGATGGGAGATCAAGTGGTACACCAAGCTCTGAAGTAAGCACAGT
 GGAGCTGCTGCATCTGCAACAACAGCAGGCTCTCCAGGCAGCAAGACAACCTTTTGTACAGCAGCAAACC
 AGTGGATTGAAATCTCCTAAGAGCAGTGAGAAGCAGAGGCCACTGCAGGTGCCGTGTGGTGGCCATGA
 TGAATCCCAAGTGATCACCCCTCAGCAGATGCAGCAGATTCTTCAGCAGCAGGTCTGTCTCCTCAGCA
 GCTCCAGGCCCTCCTCCAGCAGCAGCAAGCTGTGATGTTGCAGCAGCAGCAACAGCAGCAGCAGCAACAG
 CAGCAACAGCAGCAGCAGCAGCAACAACAGCAGCAGCAGCAGCAACAGCAACAGCAGCAGCAGCAAC
 AGCAGCAGCAACAGCAACAGCATCCTGGAAGCAAGCAAAAGAGCAGCAGCAGCAACAGCAGCAGCAGCA
 GTTGGCGGCGCAGCAGCTCGTCTCCAGCAGCAGCTTCTCCAAATGCAGCAGCTACAGCAGCAACAACAT
 CTGCTCAGCCTTACAGCGCCAGGGCCTCATCTCCATCCCACCCGGCAAGCAGCCCTTCTGTCCAGTCCG
 TGCCCTCAAGCTGGCTTAAGTCTGCTGAGATTCAGCAACTATGGAAGAAGTGACTGGAGTCCATAGTAT
 GGAAGACAACGGCATCAAGCATGGAGGGCTAGACCTCACGACTAACAATTCCTCCTCGACTACCTCCTCC
 ACCACGTCCAAAGCATCACCCCATCACACATCATTCCATAGTGAACGGACAGTCTTCAGTTCTGAATG
 CAAGGCGGGACAGCTCATACATGAGGAGACTGGGCGCTCGCACACTCTCTATGGCCATGGAGTCTGCAA
 GTGGCCAGGCTGTGAAAGCATATGTGAAGATTTGGACAGTTTTGAAGCACCTTAACAATGAGCATGCA
 TTGGATGACCGAAGCAGTCCCAATGTCGAGTGCAAATGCAGGTGGTACAGCAGTTAGAAATACAGCTTT
 CTAAAGAACCGAAGCTTTCAAGCGATGATGACCCACTTGCACATGCGACCCCTCAGAGCCCAACCATC
 TCCCAAACCTCTAAATCTGGTGTCTAGTGTACCATGTGGAAGAACATGCTGGAGACATCCCCACAGAGC
 TTACCTCAAACCCCTACCACACCAACGGCCCGAGTCACCCGATTACCCAGGGACCCTCTGTAATCACCC
 CAGCCAGTGTGCCAATGTGGGAGCCATACGAAGGCGACATTCAGACAAATACAACATCCCATGTCATC
 AGAGATTGCCCAAACACTCGAATTTTATAAAAACGCAGATGTTAGACCTCCCTTCACTTATGCAACACTC
 ATAAGGCAGGCTATCATGGAGTCATCTGACAGGCAGTTAACTTAATGAAATTTACAGCTGGTTTACAC
 GGACATTTGCTTACTTCAGGCGGAATGCCGCCACTTGAAGAATGCAGTGGTGCATTAATCTTAGCCTGCA
 CAAATGTTTTGTTTCGAGTAGAAAATGTTAAAGGAGCAGTGTGGACTGTGGACGAAGTCAATACCGAAG
 CGAAGGTCACAAAAGATAACAGGAAGTCCAACCTTAGTAAAAATATACCTACAAGTTTGGGCTATGGAG
 CAGCTCTAAATGCCAGTCTGCAGGCTGCCCTGGCAGAAAGCAGCTTGCCTTTGCTAAGTAACCCTGGACT
 GATCAATAACGCCTCCAGTGGCCTCCTGCAGGCGTCCACGAAGACCTCAATGGTTCCCTGGACCACATC
 GACAGCAATGGGAACAGCAGTCCGGGTTGCTCACCTCAGCCACACATACATTCAATCCATGTCAAGGAAG
 AACCCGTGATTGCAGAGGATGAAGACTGTCCAATGTCAATTAGTGACAACAGCCAATCACAGTCCGGAGTT
 AGAAGATGACAGAGAGATTGAGGAAGAGCCTTTATCTGAGGACCTGGAA

ACGCGTACGCGGCCGCTCGAG – GFP Tag – GTTTAA

Protein Sequence: >MG210081 representing BC058960
 Red=Cloning site Green=Tags(s)

MMQESATETISNSSMNQNGMSTLSSQLDAGSRDRSSGDTSSSEVSTVELLHLQQQALQAARQLLQQQT
 SGLKSPKSEKQRLQVPVSVAMMTPQVITPQQMQQILQQQVLSQQQLQALLQQQAVMLQQQQQQQQQ
 QQQQQQQQQQQQQQQQQQQQQQQQQQQQHPGKQAKEQQQQQQQQLAAQQLVFQQQLLQMQLQQQH
 LLSLQRQGLISIPPGAALPVQSLPQAGLSPAETQQLWKEVTGVHSMEDNGIKHGGLDLTTNNSSTSS
 TTSKASPPITHHSIVNGQSSVLNARRDSSSHEETGASHTLYGHGVCKWPGCESICEDFGQFLKHLNNEHA
 LDDRSTAQCRVQMVVQQLLEIQLSKERERLQAMMTHLHMRPSEPKPSPKPLNLSVSSVTMSKNMLETSPQS
 LPQTPTPTAPVTPITQGPSVITPASVNVGAIRRRHSDKYNIPMSSEIAPNYEFYKNADVRPPFTYATL
 IRQAIMESSDRQLTLNEIYSWFTRTFAYFRRNAATWKNVVRHNLSLHKCFVRVENVKGAVWTVDEVEYQK
 RRSQKITGSPTLVKNIPTSLGYGAALNASLQAALAESSLPLLSNPGLINNASSGLLQAVHEDLNGSLDHI
 DSNGNSSPGCSPQPHIHSIHVKEEPVIAEDEDPCMSLVTTANHSPELEDDREIEEPLSEDL

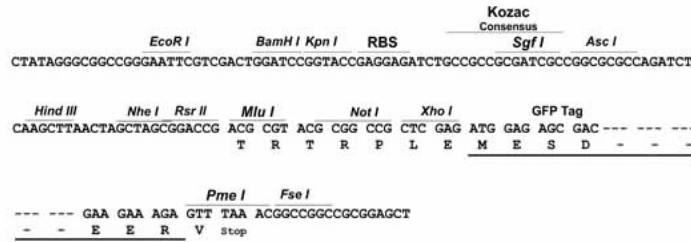
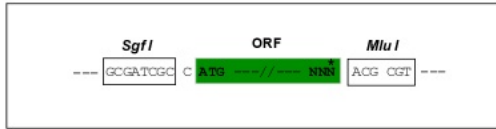
TRTRPLE - GFP Tag - V

Restriction Sites:

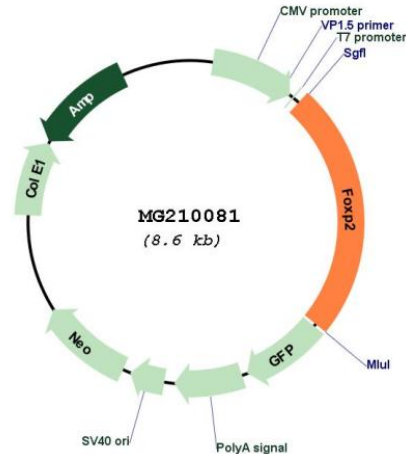
Sgfl-MluI

Cloning Scheme:

Cloning sites used for ORF Shuttling:



Plasmid Map:



ACCN: BC058960

ORF Size: 2079 bp

OTI Disclaimer: The molecular sequence of this clone aligns with the gene accession number as a point of reference only. However, individual transcript sequences of the same gene can differ through naturally occurring variations (e.g. polymorphisms), each with its own valid existence. This clone is substantially in agreement with the reference, but a complete review of all prevailing variants is recommended prior to use. [More info](#)

OTI Annotation: This clone was engineered to express the complete ORF with an expression tag. Expression varies depending on the nature of the gene.

Components: The ORF clone is ion-exchange column purified and shipped in a 2D barcoded Matrix tube containing 10ug of transfection-ready, dried plasmid DNA (reconstitute with 100 ul of water).

Reconstitution Method:

1. Centrifuge at 5,000xg for 5min.
2. Carefully open the tube and add 100ul of sterile water to dissolve the DNA.
3. Close the tube and incubate for 10 minutes at room temperature.
4. Briefly vortex the tube and then do a quick spin (less than 5000xg) to concentrate the liquid at the bottom.
5. Store the suspended plasmid at -20°C. The DNA is stable for at least one year from date of shipping when stored at -20°C.

RefSeq: [BC058960.1](#)

RefSeq Size: 2692 bp

RefSeq ORF: 2081 bp

Locus ID: 114142

Cytogenetics: 6 A1

Gene Summary: Transcriptional repressor that may play a role in the specification and differentiation of lung epithelium. May also play a role in developing neural, gastrointestinal and cardiovascular tissues. Can act with CTBP1 to synergistically repress transcription but CTPBP1 is not essential. Plays a role in synapse formation by regulating SRPX2 levels.[UniProtKB/Swiss-Prot Function]