

Product datasheet for **MG210080**

Ikbke (BC037446) Mouse Tagged ORF Clone

Product data:

Product Type:	Expression Plasmids
Product Name:	Ikbke (BC037446) Mouse Tagged ORF Clone
Tag:	TurboGFP
Symbol:	Ikbke
Synonyms:	Ikki, IKK-i
Mammalian Cell Selection:	Neomycin
Vector:	pCMV6-AC-GFP (PS100010)
E. coli Selection:	Ampicillin (100 ug/mL)



[View online »](#)

ORF Nucleotide
Sequence:

>MG210080 representing BC037446
Red=Cloning site Blue=ORF Green=Tags(s)

TTTTGTAATACGACTCACTATAGGGCGGCCGGGAATTCGTCGACTGGATCCGGTACCGAGGAGATCTGCC
GCC**CGCATCGCC**

ATGCAGAGTACCACTA ACTACCTGTGGCATACTGATGACCTGCTAGGGCAGGGGGCCACTGCCAGTGTGT
ACAAGGCCGAAACAAGAAATCCGGGGAGGTGGTTGCTGTAAAGTCTTCAACTCAGCCAGCTATCGGCG
ACCTCCTGAGTTTCAGGGAGGCAGCCGGCAGAAGGTGCTAATCATGGAGTACTGCTCCAGTGGGAGCCTG
CTGAGCGTGTGGAAGACCCTGAGAACACGTTCCGGCTTTCTGAAGAGGAGTTCTAGTGGTGTGCGCT
GTGTGGTGGTGGCATGAACCACCTGCGGGAGAATGGCATTGTCCATCGGGACATCAAACCTGGGAACAT
CATGCGCCTGGTGGCGAGGAGGGCAGAGCATCTATAAGCTGTCTGACTTCGGGGCTGCCCGAAGCTG
GACGATGATGAGAAGTTTGTCTGTCTATGGTACAGAGGAATACCTGCACCCTGACATGTATGAGCGTG
CAGTGTGCGCAAACCCAGCAAAGGCATTTGGTGTGACTGTGGATCTCTGGAGTATTGGGGTGACCTT
GTACCACGCAGCCACAGGCAGTCTGCCCTTCATCCCCTTCGGTGGGCCCCGGCGCAACAAAGAGATCATG
TACAGAATCACCCAGAGAAGCCAGCCGGGGCCATTTTCAGGGACTCAGAAGCAGGAAAATGGTCCCTTGG
AGTGGAGCTACAGCCTCCCCATCACCTGTAGACTGTCCATGGGGCTGCAGAACAGCTGGTGCCATCCT
GGCCAACATCCTGGAGGTGGAAGAGGATAAGTGTGGGGCTTTGATCAGTTCTTCGCGGAGACCAGTGAC
ATTCTGCAGCGAACGGTCATCCACGTCTTTTCCCTACCCAGGCCGTTTTGCATCATGTCTACATCCACG
CCCACAACACGATTGCCATCTTTTTGGAGGCTGTATATGAGCAGACCAACGTGACCCCCAAACACAGGA
GTACCTCTTCGAGGGTCAACCTTGTGTCTTTCAGCAAGCCTCTCAGCCCAGCACATCGCCACACAGCT
GCCAGCAGCCCTAACTCTGTTTCAGCATGTCCAGCGACACACCTAAGGGGCTGGCCTTCAGGGACCCTG
CTCTGGATGTCCCAAAGTTCGTCCCTAAGGTTGACCTACAGGCCGATTACAGCACAGCTAAGGGGGTGTCT
GGGCGCTGGCTACCAGGCCCTGTGGCTGGCGCGGGTCTGCTGGATGGACAGGCGTTGATGCTTCGGGGG
TTACATTGGGTCTGGAGGTGCTTCAGGACACGTGCCAGCAGACACTGGAGGTACACAGGACAGCCCTCC
TCTACCTCGGCAGCAGCCTGGGCACTGAAAGGTTTCAGCAGTGGATCGGGGATGCCTGACGTCCAGGAACG
AAAGGAGGCCACAGAGCTAAGAACCAGGCTGCAGACTCTCTCAGAGATCCTGTCTAAATGTTCCACAAT
GTCACAGAAACCCAAAGGAGCCTGAGCTGTCTGGGTGAAGAGCTTTTAAAGAACCAGGACCAGATTCATG
AGGATAACAAAAGTATCCAGAAGATTAGTGTGTTGGACAAGATGCACTTCATCTACAAACAGTTCAA
GAAATCCAGGATGAGGCCAGGGCTCAGCTACAATGAGGAGCAGATCCACAAGCTGGATAAGGTAATTTT
AGTCATCTAGCCAAGAGGCTGCTGCAGGTGTTCCAGGAGGAGTGTGTGCAGACGTATCAGGTGTCGCTGG
TCACACACGGCAAGCGGATGAGGCAGGTGCAGAGGGCCAGAACCACCTGCATCTCATTGGCCACTCTGT
GGCCACCTGTAACCTCGGAAGCCCGGGGAGCCAGGAGAGTCTGAACAAGATCTTTGATCAGCTCCTTCTG
GACAGAGCTTCCGAACAGGGAGCTGAGGTGTCACCGCAACCTATGGCTCCTCATCCCGCCCTGATCCGA
AGGACCTGGTCTTCCACATGCAGGAGCTTTGTAATGATATGAAGCTATTGGCCTTTGATCTCCAGGACAA
CAACCGACTCATCGAACGGTTACATAGAGTTCATCGGCACCAGATGTC

ACGCGTACGCGGCCGCTCGAG – GFP Tag – GTTTAA

Protein Sequence: >MG210080 representing BC037446
 Red=Cloning site Green=Tags(s)

MQSTTNYLWHTDDLGGGATASVYKARNKKSGEVVAVKVFNSASYRRPPEVQGGSRQKVLIMEYCSSGSL
 LSVLEDPENTFGLSEEEFLVLCRVVAGMNLRENGIVHRDIKPGNIMRLVGEEGQSIYKLSDFGAARKL
 DDDEKFSVSYGTEEYLHPDMYERAVLRKPQQKAFGVTVDLWSIGVTLYAATGSLPFIPIFGPRRNKEIM
 YRITTEKPAAGISGTQKQENGPLEWSYSLPITCRLSMGLQNQLVPILANILEVEEDKCWGFDDQFFAETSD
 ILQRTVIHVFSLPQAVLHHVYIHAHNTIAIFLEAVYEQTNVTPKHQEYLFEGHPCVLEPSLSAQHIAHTA
 ASSPLTLFMSSSDTPKGLAFRDPALDVPKFVPKVDLQADYSTAKGVLGAGYQALWLARVLLDGQALMLRG
 LHWVLEVLQDTCQQTLEVTRTALLYLGSLSLGTERTFSSGSGMPDVQERKEATELRTRLQTLSEILSKCSHN
 VTETQRSLSCLGEELLKNRDQIHEDNKS IQKIQCCLDKMHFIYKQFKSRMRPGLSYNEEQIHKLDKVN
 SHLAKRLLQVFQEECVQTYQVSLVTHGKMRQVQRAQNHHLIGHSVATCNSEARGAQESLNKIFDQLLL
 DRASEQGAEVSPQPMAPHPGDPKDLVFHMQELCNMMLLAFDLQDNNRLIERLHRVPSAPDV

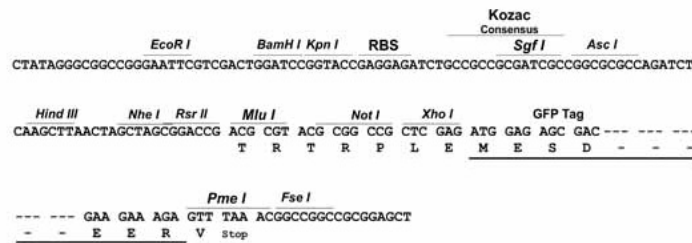
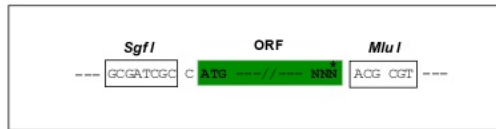
TRTRPLE - GFP Tag - V

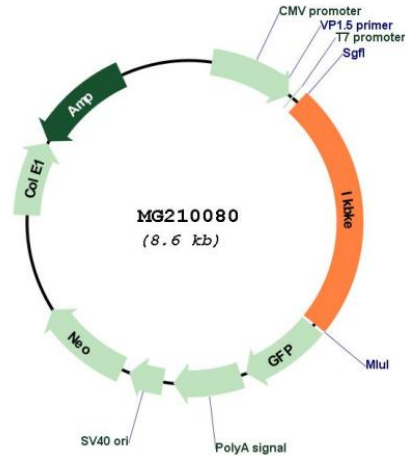
Restriction Sites:

SgfI-MluI

Cloning Scheme:

Cloning sites used for ORF Shuttling:



Plasmid Map:


ACCN: BC037446

ORF Size: 2079 bp

OTI Disclaimer: The molecular sequence of this clone aligns with the gene accession number as a point of reference only. However, individual transcript sequences of the same gene can differ through naturally occurring variations (e.g. polymorphisms), each with its own valid existence. This clone is substantially in agreement with the reference, but a complete review of all prevailing variants is recommended prior to use. [More info](#)

OTI Annotation: This clone was engineered to express the complete ORF with an expression tag. Expression varies depending on the nature of the gene.

Components: The ORF clone is ion-exchange column purified and shipped in a 2D barcoded Matrix tube containing 10ug of transfection-ready, dried plasmid DNA (reconstitute with 100 ul of water).

Reconstitution Method:

1. Centrifuge at 5,000xg for 5min.
2. Carefully open the tube and add 100ul of sterile water to dissolve the DNA.
3. Close the tube and incubate for 10 minutes at room temperature.
4. Briefly vortex the tube and then do a quick spin (less than 5000xg) to concentrate the liquid at the bottom.
5. Store the suspended plasmid at -20°C. The DNA is stable for at least one year from date of shipping when stored at -20°C.

RefSeq: [BC037446](#), [AAH37446](#)

RefSeq Size: 2931 bp

RefSeq ORF: 2081 bp

Locus ID: 56489

Cytogenetics: 1 E4

Gene Summary: Serine/threonine kinase that plays an essential role in regulating inflammatory responses to viral infection, through the activation of the type I IFN, NF-kappa-B and STAT signaling. Also involved in TNFA and inflammatory cytokines, like Interleukin-1, signaling. Following activation of viral RNA sensors, such as RIG-I-like receptors, associates with DDX3X and phosphorylates interferon regulatory factors (IRFs), IRF3 and IRF7, as well as DDX3X. This activity allows subsequent homodimerization and nuclear translocation of the IRF3 leading to transcriptional activation of pro-inflammatory and antiviral genes including IFNB. In order to establish such an antiviral state, IKBKE forms several different complexes whose composition depends on the type of cell and cellular stimuli. Thus, several scaffolding molecules including IPS1/MAVS, TANK, AZI2/NAP1 or TBKBP1/SINTBAD can be recruited to the IKBKE-containing-complexes. Activated by polyubiquitination in response to TNFA and interleukin-1, regulates the NF-kappa-B signaling pathway through, at least, the phosphorylation of CYLD. Phosphorylates inhibitors of NF-kappa-B thus leading to the dissociation of the inhibitor/NF-kappa-B complex and ultimately the degradation of the inhibitor. In addition, is also required for the induction of a subset of ISGs which displays antiviral activity, may be through the phosphorylation of STAT1 at 'Ser-708'. Phosphorylation of STAT1 at 'Ser-708' seems also to promote the assembly and DNA binding of ISGF3 (STAT1:STAT2:IRF9) complexes compared to GAF (STAT1:STAT1) complexes, in this way regulating the balance between type I and type II IFN responses. Protects cells against DNA damage-induced cell death. Also plays an important role in energy balance regulation by sustaining a state of chronic, low-grade inflammation in obesity, which leads to a negative impact on insulin sensitivity. Phosphorylates AKT1. [UniProtKB/Swiss-Prot Function]