

Product datasheet for **MG210067**

Calcoco1 (NM_026192) Mouse Tagged ORF Clone

Product data:

Product Type:	Expression Plasmids
Product Name:	Calcoco1 (NM_026192) Mouse Tagged ORF Clone
Tag:	TurboGFP
Symbol:	Calcoco1
Synonyms:	1810009B06Rik; Cocoa; Gcap11; mKIAA1536
Mammalian Cell Selection:	Neomycin
Vector:	pCMV6-AC-GFP (PS100010)
E. coli Selection:	Ampicillin (100 ug/mL)



[View online »](#)

ORF Nucleotide
Sequence:

>MG210067 representing NM_026192
Red=Cloning site Blue=ORF Green=Tags(s)

TTTTGTAATACGACTCACTATAGGGCGGCCGGGAATTCGTCGACTGGATCCGGTACCGAGGAGATCTGCC
GCCGCGATCGCC

ATGGAAGAGTCATCACTAAGCCGGGCACCATCCCGGGGTGGAGTCAACTTCTGAATGTGGCCCGCACCT
ACATCCCCAACACCAAGGTGGAATGTCACTACACTTTGCCTCCGGTACCATGCCAGTGCCAGTACTG
GATTGGCATTAAAAAGGTGGAAGCTGCCTGCGTTCGAGATTATCACACGTTTCGTGTGGTCTCAGTGCCA
GAAAGTACAACCTGATGGCTCCCCACCCATGCCAGTGTCCAATCCAAGCCAGCTACCTGCCAAACCAG
GAGCCCAACTCTACCAGTTCGGTATGTGAACCGCAGGGCCGGGTGTGTGGCAGAGCCCCCTTCCA
GTTCCGAGAGCCAAGGCCATGGATGAGCTGGTGACCCTGGAGGAGGCTGATGGAGGCTCTGACATCTG
TTGTTTGCCTAAGGCCACCGTCTCAGAACCAGCTGGATGAGAGCCAGCAGGAGCGGAATGACCTGA
TGCAGCTGAAGCTGCAGTTGGAGGATCAGGTGACAGAGCTGAGGAGCCGAGTGCAGGAGCTGGAGGCAGC
TCTGGCCACGGCCAGGCAGGAGCATTTCGAGCTCACCGAGCAGTACAAGGGGCTCTCCCGTCCCATGGG
GAGCTCTCAGAAGAGAGGGACATCCTGAGCCAGCAGCAGGGAGACCATGTGGCCGTATCCTGGAGTTAG
AGGATGACATCCAGACCATGAGTGACAAAGTGCTGATGAAGGAGGTGGAGCTGGACAGGGTTAGAGACAC
AGTGAAGGCCCTGACACGGGAACAAGAGAAGCTCCTGAGACAGCTGAAGGAATCCAGGCAGACAAGGAG
CAGAGTGAGGCTGAATTACAAACGGTCCGAGAGGAGAAGCTGCTGCTTAAATACAGAGCTGGAGGAGGCCA
AGAGCCGGCAAGAAGAGCAAGGTGCTCAGGTCCAGCGACTGAAGGACAAGCTGGCCACATGAAGGACAC
CCTGGGCCAAGCCAGCAGAAAGTGGCCGAGCTGGAGCCCTGAAAGAGCAGCTCCGAGGGGTCCAGGAA
CTTGACAGCCTCAAGCCAGCAGAAAGCGGCCCTCCTTGGGAGGAGTTGGCCAGTGCAGCAGGAGCTAGAG
ACCGAACCATAGCTGAACTACACCGCAGCCGACTGGAGGTGGCTGAAGTCAACGGCCGACTGGCTGAGCT
CAGCCTGCACATGAAGGAGGAAAAGTGCCAGTGGAGCAAGGAGCGGACAGGGCTGCTGCAGAGCATGGAG
GCTGAAAAGGATAAGATCCTGAAGCTGAGTGCGGAGATCCTCCGACTGGAGAAGACGGTGCAGGAGGAGA
GGACCCAGAGTCACGTGTTCAAGACTGAGCTGGCCGAGAAAAGGATTCTAGCCTGGTGCAGTTGTCAGA
GAGTAAGCGGGAGCTCACAGAGCTACGGTACGCCCTCCGTGTGCTTTCAGAAGGAGAAGGAGCAGTTGCAG
ACGGAGAAACAGGAAGTCTGGAGTACATGAGGAAGCTGGAGGCCCGCCTGGAGAAGGTGGCGGATGAGA
AGTGGACCGAAGATGCTGCCACAGAGGACGAGGAAGCCACTGCTGGCTGAGCTGCCCTGCCTCTCTGAC
AGACTCAGAGGACGAGTCCCAGAAGACATGCGGCTCCCATCCTATGGCTTGTGTGAGAGTGAAACACA
AGCTCCTCTCCTCTGGCCTCGGGAGCCTTCTTCTTGTGTGATCAACCAACCAGCACCCATTGCTC
CCCAGTTCTCAGTCCAGGGGAGCCAGCAGCTCAGACTCGGAGGCTGAAGATGAGAAGTCAAGTCCCTGAT
GGCAGCGGTGCAGAGTGGGGGCGAGGAAGCCAGCCTCCTGCTTCTGAGCTCGGCAGTGCCTTCTATGAC
GTGGCCAGTGTCTTACAGTGTGTTCCCTGTGAGAGGCCAGCCCTGGGGTCCCAGCCAACCTCCATGGA
AGGAGTGTCCATCTGCAAGGAGCGCTTCCCTGCTGAGAGTGACAAGGACGCCCTAGAGGGCCACATGGA
TGGCATTCTTCTTTCAGCACCCAGGACCCTTTCACCTTTGAG

ACGCGTACGCGGCCGCTCGAG – GFP Tag – GTTTAA

Protein Sequence: >MG210067 representing NM_026192
 Red=Cloning site Green=Tags(s)

MESSLRAPSRRGGVNFNLNVRTYIPNTKVECHYTLPPGTMPASDWIGIFKVEAACVRDYHTFWSSVP
 ESTTDGSPTHASVQFQASYLKPQGAQLYQFRYVNRQGRVCGQSPFPQFREPRPMDLVTLEEADGGSDIL
 LVVPKATVLQNLDESQQRNDLMQLKLQLEDQVTELRSRVQELEAALATARQHESELTEQYKGLSRSHG
 ELSEERDILSQQQGDHVARILELEDDIQTMSDKVLMKEVELDRVRDVKALTRQEKLRLQLKEFQADKE
 QSEAEELQTVREENCLNTELEEAQRQEEQGAQVQRLKDKLAHMKDTLGQAQKVAELEPLKEQLRGVQE
 LAASSQQAALLGEELASAAGARDRTIAELHRSRLVAEVNGLAELSLHMKEEKQWSKERTGLLQSM
 AEKDKILKLSAEILRLEKTVQEERTQSHVFKTELAREKSSLVQLSESKRELTELRALRVLQKEKEQLQ
 TEKQELLEMYMRKLEARLEKVADEKWTEDAATEDEEATAGLSCPASLTDSEDESPEDMRLPSYGLCESGNT
 SSSPPGPREPSSLVVINQPAIAPQFSGPGEASSDSEAEDEKSVLMAAVQSGGEEASLLLPELGSFYD
 VASAFTVSSLSEASPGVPANPPWKECPICKERFPAESDKDALEGHMDGHFFSTQDPFTFE

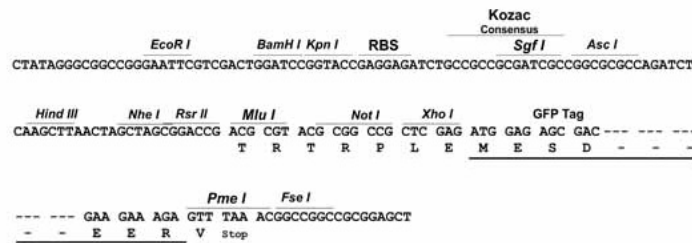
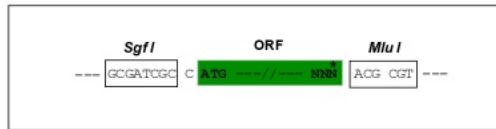
TRTRPLE - GFP Tag - V

Restriction Sites:

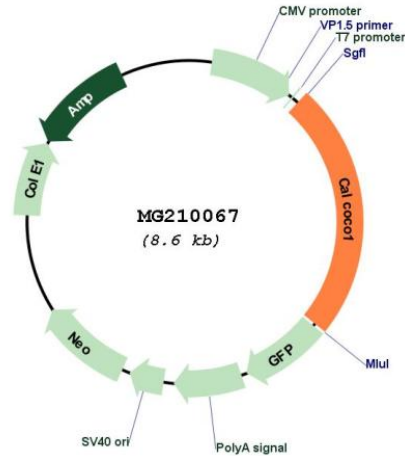
SgfI-MluI

Cloning Scheme:

Cloning sites used for ORF Shuttling:



Plasmid Map:



ACCN: NM_026192

ORF Size: 2073 bp

OTI Disclaimer: The molecular sequence of this clone aligns with the gene accession number as a point of reference only. However, individual transcript sequences of the same gene can differ through naturally occurring variations (e.g. polymorphisms), each with its own valid existence. This clone is substantially in agreement with the reference, but a complete review of all prevailing variants is recommended prior to use. [More info](#)

OTI Annotation: This clone was engineered to express the complete ORF with an expression tag. Expression varies depending on the nature of the gene.

Components: The ORF clone is ion-exchange column purified and shipped in a 2D barcoded Matrix tube containing 10ug of transfection-ready, dried plasmid DNA (reconstitute with 100 ul of water).

Reconstitution Method:

1. Centrifuge at 5,000xg for 5min.
2. Carefully open the tube and add 100ul of sterile water to dissolve the DNA.
3. Close the tube and incubate for 10 minutes at room temperature.
4. Briefly vortex the tube and then do a quick spin (less than 5000xg) to concentrate the liquid at the bottom.
5. Store the suspended plasmid at -20°C. The DNA is stable for at least one year from date of shipping when stored at -20°C.

RefSeq: [NM_026192.2](#), [NP_080468.1](#)

RefSeq Size: 2713 bp

RefSeq ORF: 2076 bp

Locus ID: 67488

UniProt ID: [Q8CGU1](#)

Cytogenetics: 15

Gene Summary: Functions as a coactivator for aryl hydrocarbon and nuclear receptors (NR). Recruited to promoters through its contact with the N-terminal basic helix-loop-helix-Per-Arnt-Sim (PAS) domain of transcription factors or coactivators, such as NCOA2. During ER-activation acts synergistically in combination with other NCOA2-binding proteins, such as EP300, CREBBP and CARM1. Involved in the transcriptional activation of target genes in the Wnt/CTNNB1 pathway. Functions as a secondary coactivator in LEF1-mediated transcriptional activation via its interaction with CTNNB1. Coactivator function for nuclear receptors and LEF1/CTNNB1 involves differential utilization of two different activation regions. In association with CCAR1 enhances GATA1- and MED1-mediated transcriptional activation from the gamma-globin promoter during erythroid differentiation of K562 erythroleukemia cells (PubMed:24245781). [UniProtKB/Swiss-Prot Function]