

Product datasheet for **MG210064**

Crnk11 (NM_025820) Mouse Tagged ORF Clone

Product data:

Product Type:	Expression Plasmids
Product Name:	Crnk11 (NM_025820) Mouse Tagged ORF Clone
Tag:	TurboGFP
Symbol:	Crnk11
Synonyms:	1200013P10Rik; 5730590A01Rik; C80326; crn
Mammalian Cell Selection:	Neomycin
Vector:	pCMV6-AC-GFP (PS100010)
E. coli Selection:	Ampicillin (100 ug/mL)



[View online »](#)

ORF Nucleotide Sequence:

>MG210064 representing NM_025820
 Red=Cloning site Blue=ORF Green=Tags(s)

TTTTGTAATACGACTCACTATAGGGCGGCCGGGAATTCGTCGACTGGATCCGGTACCGAGGAGATCTGCC
 GCC**CGGATCGCC**

ATGGCAGCCTCCACGGCGCCGGGAAACAGCGCATTCTAAAGTGCCAAGGTGAAGAACAAGGCGCCGG
 CCGAAGTGCAGATAACGGCCGAGCAGCTCTCCGAGAAGCTAAAGAGAGAGAAGCTCGAGCTCTCCACC
 TCCACCTCAGCAGAAGATCACAGATGAGGAAGAATTAACGATTACAAACTCCGGAAGGAAAGACTTTT
 GAAGATAACATAAGAAAAATAGGACTGTGATTAGCAACTGGATAAAATACGCACAATGGGAGGAAAGTC
 TAAAGGAAATTCAAAGGGCTCGATCCATATACGAGCGTGTCTTAGATGTCGACTACCGAAATATTACCT
 CTGGCTGAAATATGCAGAAATGGAGATGAAGAACCAGGTCACCATGCCCCGAAACATCTGGGACCGT
 GCCATCACAACCTGCCACGCGTCAACCACTTCTGGTATAAGTACACATACATGGAGGAGATGTTGGGCA
 ACGTTGCTGGTGCAGCCAGGTGTTGAGCGCTGGATGGAATGGCAGCCTGAGGAGCAGGCTGGCATT
 CTACATCAACTTCGAGCTGAGATACAAAGAGGTGGAGCGGCCCGCACCATCTATGAACGCTTTGTCTC
 GTGCACCTGCTGTGAAAACTGGATCAAGTACGCAAGATTTGAAGAGAAGCATGCTTACTTTGCTCATG
 CGCGGAAAGTCTACGAGAGAGCGGTGGAGTTTTTTGGGGATGAGCATATGGACGAACACCTCTATGTGGC
 CTTTGCTAAATTTGAGGAAAACAGAAAGAATTTGAAAGGGTACGAGTTATCTACAAATATGCCCTGGAT
 AGGATTTCAAACAAGAGGCCCAAGAAGCTTTTAAAACTATACCATCTTTGAGAAGAAGTTTGGTGACC
 GGAGGGGTATAGAAGACATCATCGTGAGCAAACGGAGGTTCCAGTATGAAGAAGAAGTGAAGGCTAATCC
 ACACAATTATGATGCATGGTTTGATTATTTACGCTTGGTGAAAGTATGCGGAAGCTGACACTGTGCGG
 GAAGTCTATGAGAGAGCCATTGCCAATGTGCCACCCATCCAGGAGAAGAGACACTGGAAGCGCTACATCT
 ACCTTTGGGTTAACTATGCACTCTATGAAGAGCTGGAAGCCAAGGATCCCGAGAGAACAAGACAGGTATA
 TCAAGCGTCTTTGGAACATAATTCCTCACAAAAAGTTCACATTTGCCAAAAATGTGGTTATATTATGCACAG
 TTTGAAATAAGACAGAAAAATCTGCCATTTGCCAGAAAGCTTTGGGAACTTCCATAGGCAAATGTCCGA
 AGAACAAAGTTATTCAAAGGATACATAGAAGTGAAGTGCAGCTTCGAGAATTTGACAGATGCAGGAAGCT
 TTATGAAAAGTTTTTGAATTTGGACCTGAAAATTGTACCTCATGGATTAAGTTTGCAGAATTAGAGACA
 ATCCTTGGTGATATTGAGAGAGCTCGGGCAATCTATGAATTAGCCATCAGCCAGCCACGCTTGGATATGC
 CAGAGGTACTTTGAAATCATATATTGATTTTGGATTGAGCAGGAAGAACTGAAAGAACACGAAACCT
 TTACCGACAATTGCTTCAGCGAACACAGCATGTCAAGGTATGGATCAGTTTTGCTCAGTTTGAGTTATCG
 TCTGGGAAAAGAAGGAAGTGTGGCTAAATGCAGACAGATTTATGAAGAAGCTAACAAAACCATGAGAACT
 GTGAAGAAAAAGAAGAGAGGCTTATGTTGCTGGAATCCTGGAGAAGTTTTGAAGATGAATTTGGCACAGT
 ATCAGACAAGGAGAGAGTAGACAAACTCATGCCAGAAAAGGTCAAGAAGAGAAGAAAGTCCAGGCCGAC
 GATGGGCTGACGCCGGGTGGGAAGAATACTATGACTACATCTTCCAGAGGATGCTGCCAACCGCCTA
 ACCTCAAGCTCCTGGCCATGGCCAAGCTGTGGAAGAAACAGCAACAGGAAAGAGAAGCTGCCGAACAGGA
 TCCAGATAAGGACATTGATGAGAGTGAATCCTCATCTTTT

AG**CGGACCG**ACGCGTACGCGGCCGCTCGAG - GFP Tag - GTTTAA

Protein Sequence: >MG210064 representing NM_025820
 Red=Cloning site Green=Tags(s)

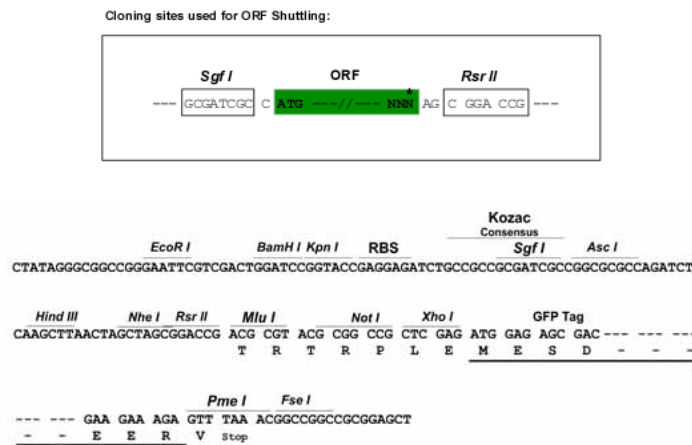
MAASTAAGKQRIPKVAKVKNKAPAEVQITAEQLLREAKERELLEPPPPQQKITDEEELNDYKLRKRKTF
 EDNIRKNRTVISNWIKYAQWEESLKEIQRARSYERALDVDYRNITLWLKYAEMEMKNRQVNHARNIWR
 AITTLPRVNQFWYKYTYMEMLGNVAGARQVFERWMEWQPEEQAWHSYINFELRYKEVERARTIYERFVL
 VHPAVKNWIKYARFEEKHAYFAHARKVYERAVEFFGDEHMDEHLVYAFKFEENQKEFERVRVIYKYALD
 RISKQEAQELFKNYTIFEKKFGDRRGIEDIIVSKRRFQYEEVKANPHNYDAWFDYLRLVESDAEADTVR
 EYVERAIANVPPIQEKRWKRYIYLWVNYALYEELEAKDPERTRQVYQASLELIPHKKFTFAKMWLYYAQ
 FEIRQKNL PFARRALGTSIGKCPKNKLFKGYIELELQLREFDRCRKL YEKFLFPGPENCTSWIKFAELET
 ILGDIERARAIYELAISQPRLDMPVWLKSYIDFEIEQEETERNL YRQLLQRTQHVKVWISFAQFELS
 SGKEGSVAKCRQIYEEANKTMRNCEEKEERLMLLESWRSFEDEF GTVSDKERVDKLMPEKVKRRKRVQAD
 DGSDAGWEEYYDYIFPEDAANQPNLKLLAMAKLWKKQQQERAAEQDPDKDIDSESSSF

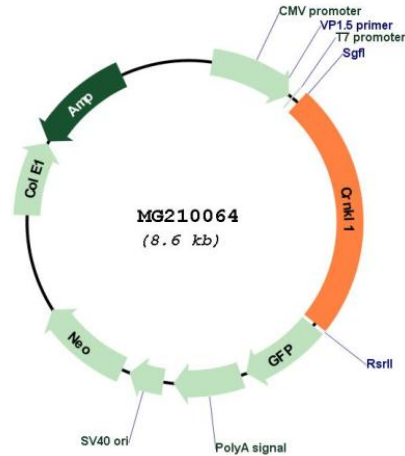
SGPTRRRLE - GFP Tag - V

Restriction Sites:

SgfI-RsrII

Cloning Scheme:



Plasmid Map:


ACCN: NM_025820

ORF Size: 2070 bp

OTI Disclaimer: The molecular sequence of this clone aligns with the gene accession number as a point of reference only. However, individual transcript sequences of the same gene can differ through naturally occurring variations (e.g. polymorphisms), each with its own valid existence. This clone is substantially in agreement with the reference, but a complete review of all prevailing variants is recommended prior to use. [More info](#)

OTI Annotation: This clone was engineered to express the complete ORF with an expression tag. Expression varies depending on the nature of the gene.

Components: The ORF clone is ion-exchange column purified and shipped in a 2D barcoded Matrix tube containing 10ug of transfection-ready, dried plasmid DNA (reconstitute with 100 ul of water).

Reconstitution Method:

1. Centrifuge at 5,000xg for 5min.
2. Carefully open the tube and add 100ul of sterile water to dissolve the DNA.
3. Close the tube and incubate for 10 minutes at room temperature.
4. Briefly vortex the tube and then do a quick spin (less than 5000xg) to concentrate the liquid at the bottom.
5. Store the suspended plasmid at -20°C. The DNA is stable for at least one year from date of shipping when stored at -20°C.

RefSeq: [NM_025820.3](#), [NP_080096.1](#)

RefSeq Size: 3111 bp

RefSeq ORF: 2073 bp
Locus ID: 66877
UniProt ID: [P63154](#)
Cytogenetics: 2 G1
Gene Summary: Involved in pre-mRNA splicing process.[UniProtKB/Swiss-Prot Function]