

Product datasheet for **MG210062**

Kbtbd7 (BC096019) Mouse Tagged ORF Clone

Product data:

Product Type:	Expression Plasmids
Product Name:	Kbtbd7 (BC096019) Mouse Tagged ORF Clone
Tag:	TurboGFP
Symbol:	Kbtbd7
Synonyms:	1110008P08Rik; AU045792; Gm295
Mammalian Cell Selection:	Neomycin
Vector:	pCMV6-AC-GFP (PS100010)
E. coli Selection:	Ampicillin (100 ug/mL)



[View online »](#)

ORF Nucleotide
Sequence:

>MG210062 representing BC096019
Red=Cloning site Blue=ORF Green=Tags(s)

TTTTGTAATACGACTCACTATAGGGCGGCCGGGAATTCGTCGACTGGATCCGGTACCGAGGAGATCTGCC
GCCGCGATCGCC

ATGCAGTCCCGGGAAGACGCCCCGCGCTCTCGCCGCTCGCCAGCCCCGCGCGGGAGGCGGCCAAGA
GGATTTCCAAGCCTCGGTGTGCGCCTTTTTCACGGGCCCGGAGGAATTAAGGACGCGGCCATTCCGC
AGCCCTCTGGCACAGCTCAAGTCTTTCTACGACGCGCGCTGCTGTGCGATGTGACCATCGAGGTGGT
ACGCTGGCAGCGGGCCGGGCACGGGGCGCTCTTCTCGTGAACCGCAACGTGTGGCGCCGCTTGC
CCTACTTCAAGAGCATGTTACGGGGGCATGTACGAGAGCCAGCAGGCCAGCGTGACGATCCACGACGT
GGATGCCGAGTCTTCGAGGTCTTGGTGGACGACTGCTACACTGGTGCCTGTGCTCAGCGAGGCCAAC
GTGCAGCGCTGTACGCGCCTCGGATATGCTGCAGCTGGAGTACGTGCGGAAGCCTGTGCTCCTTCC
TGGCTCGCCGCTTGACCTGACCAATTGCACTGCCATCCTCAAGTTTGCCGATGCCTTTGACCACCACAA
GCTGCGATCTCAGGCCAGTCTTCATAGCTCACAACCTCAAGCAGCTCAGCAGGATGGGGTCCATTCCG
GAGGAGACGCTGGCAGATCTGACCTGGCCAGCTGTGGCCGTCTGCTGCTGACAGCTTGGATGTAG
AGAGTGAGAAGACTGTGTGCATGTGGCGGTGCAGTGGCTGGAGGCTGCTCCGAAAGAGCGGGTCCAG
TGCTGCGGAAGTCTTAAAGTGTATTGTTGGGCGCACTTCCCTGCAGAAGAGCAGGACTACCTGGGAGG
CTACTGAGCAAGCCTATTGTGAAGAAATACTGCCTGGACATTATTGAAGGGGCTCTCCGGCAGCTGCGAT
TTGGTGATAGGTTGTACAAGTCAAGTGGTGGCAAGCCAAATAGCAGCCACAGCAGTGATAGCAATAATAG
CAGCAATAGCAGCAGCAGTAGTCAAGTGTATCGGTAGCAGAAAATCCACCCAAAGGTTGGGTATG
TGTGCCAAAGAGATGGTAATATTTTTGGGCACCCCGAGATCCATTTCTCTGTTACGACCCTTATTCCG
GAGATATTTACACAATGCCGTCTCCTTTGACTAGCTTGGCACACACTAAGACCATTACATCTTCAGCTGT
TTGTGTCTCTCCAGACCATGACATCTATCTTGTGCCCCAGCCAGGAAAGACCTATGGGTGTATAAACCA
GCCAAAATAGTTGGCATCAGCTGGCAGACCGCTTGTGTGTCGAGAGGGTATGGATGTAGCCTATCTGA
ATGGCTACATTTACATCTTGGGTGGGAGAGACCGATTACTGGAGTTAAATTGAAGGAAGTGAATGCTA
CAGTGTCCAGAGGAACCAATGGGCATTGGTGGCTCCTGTACCACATTCCTTTTATTCAATTTGAACAA
GTGTTTCAAGATTATCTTTACGCTGTCAACAGTAAGCGCATGCTCTGCTATGATCCTAGCCATAATATG
GGCTGAATTGTGCATCTCTCAAACGAAGTGAATTTCAAGAAGCCTGTGTCTTCAAAGAGGAAATCTATTG
TATCTGTGACATCCAGTCATGAAGTCTACAACCCTGCTAGAGGAGAGTGGAGGCGGATTAGTAATATC
CCACTGGACTCAGAAACCCACAACCTACCAGATTGTCAATCATGACCAAAGTTGCTGCTCATCACCTCTA
CCACCCACAGTGGAAAAGAACCGAGTCACAGTATATGAGTATGATACTAGGGAAGACCAATGGATTAA
TATAGGCACCATGTTAGGCCTTTTGCAGTTTGAATCTGGCTTTATTTGCCTGTGTGATCGAGTTTATCCT
TCCTGTCTTGAACCTGGTCAGAGTTTCACTGAGGAAGATGATGCAAGGAGTGAAGTCTAGCACTGAAT
GGGACTTAGATGGATTCAAGTGAAGTGGACTCTGAGTCAGGAAGTTCAAGTTCTTTTTCTGATGATGAAGT
CTGGGTACAAGTTGCGCCTCAGCGAAATGCACCAGATCAG

ACGCGTACGCGGCCGCTCGAG - GFP Tag - GTTTAA

Protein Sequence: >MG210062 representing BC096019
 Red=Cloning site Green=Tags(s)

MQSREDAPRSRRLASPRGGRPKRISKPSVSAFFTGPEELKDAHSAALLAQLKSFYDARLLCDVTIEVV
 TPGSGPGTGRLFSCNRNVLAAACPYFKSMFTGGMYESQQASVTIHDVDAESFEVLVDDCYTGRVSLSEAN
 VQRLYAASDMLQLEYVREACASFLARRLDLTNCTAILKFADAFDHHKLRSAQSFIAHNFKQLSRMGSIR
 EETLADLTLAQLLAVLRDLSLDVESEKTVCHVAVQWLEAAPKERGPSAAEVFKCIRWAHFPAEEQDYLGG
 LLSKPIVKKYCLDIEGALRQLRFGDRLYKSVVAKPNSSHSDSNSSSSSSSSSSSVVVAENPPQRLGM
 CAKEMVIFFGHPRDPFLCYDPYSGDIYTMPSPLTSLAHTKITSSAVCVSPDHDIYLAAQPRKDLWYKPK
 AQNSWHQLADRLLCREGMDVAYLNGYIYILGGRDPITGVKLKEVECYSVQRNQWALVAPVPHSFYSFELI
 VVQNYLYAVNSKRMLCYDP SHNMLNCA SLKR SDFQEACVFKEE IY C I C D I P V M K V Y N P A R G E W R R I S N I
 PLDSETHNYQIVNHDQKLLLLITSTTPQWKKNRVTVVEYDTREDQWINIGTMLGLLQFDSGFI CLCDRVYP
 SCLEPGQSFITEEDDARSESSTEWDLDFSELDSESGSSSFSDDEVVWQVAPQRNAPDQ

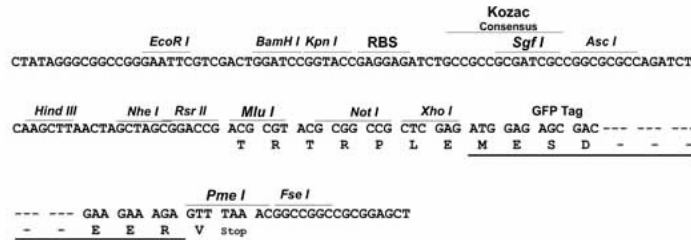
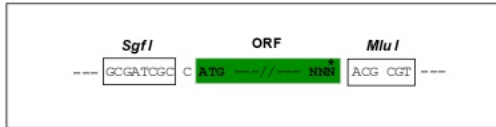
TRTRPLE - GFP Tag - V

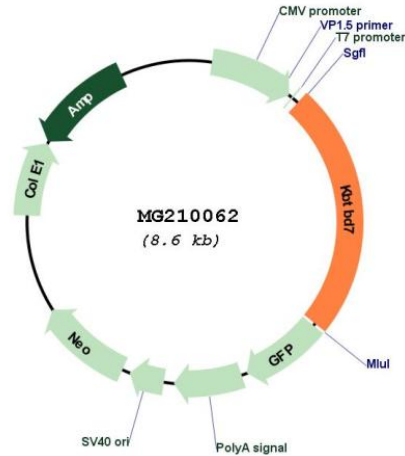
Restriction Sites:

SgfI-MluI

Cloning Scheme:

Cloning sites used for ORF Shuttling:



Plasmid Map:


ACCN: BC096019

ORF Size: 2072 bp

OTI Disclaimer: The molecular sequence of this clone aligns with the gene accession number as a point of reference only. However, individual transcript sequences of the same gene can differ through naturally occurring variations (e.g. polymorphisms), each with its own valid existence. This clone is substantially in agreement with the reference, but a complete review of all prevailing variants is recommended prior to use. [More info](#)

OTI Annotation: This clone was engineered to express the complete ORF with an expression tag. Expression varies depending on the nature of the gene.

Components: The ORF clone is ion-exchange column purified and shipped in a 2D barcoded Matrix tube containing 10ug of transfection-ready, dried plasmid DNA (reconstitute with 100 ul of water).

Reconstitution Method:

1. Centrifuge at 5,000xg for 5min.
2. Carefully open the tube and add 100ul of sterile water to dissolve the DNA.
3. Close the tube and incubate for 10 minutes at room temperature.
4. Briefly vortex the tube and then do a quick spin (less than 5000xg) to concentrate the liquid at the bottom.
5. Store the suspended plasmid at -20°C. The DNA is stable for at least one year from date of shipping when stored at -20°C.

RefSeq: [BC096019](#), [AAH96019](#)

RefSeq Size: 4542 bp

RefSeq ORF: 2072 bp
Locus ID: 211255
Cytogenetics: 14 D3