

Product datasheet for **MG210058**

Slc27a5 (NM_009512) Mouse Tagged ORF Clone

Product data:

Product Type:	Expression Plasmids
Product Name:	Slc27a5 (NM_009512) Mouse Tagged ORF Clone
Tag:	TurboGFP
Symbol:	Slc27a5
Synonyms:	FACVL3; FATP5; Vlacsr; VLCS-H2; VLCSH2
Mammalian Cell Selection:	Neomycin
Vector:	pCMV6-AC-GFP (PS100010)
E. coli Selection:	Ampicillin (100 ug/mL)



[View online »](#)

ORF Nucleotide
Sequence:

>MG210058 representing NM_009512
 Red=Cloning site Blue=ORF Green=Tags(s)

TTTTGTAATACGACTCACTATAGGGCGGCCGGGAATTCGTCGACTGGATCCGGTACCGAGGAGATCTGCC
 GCCCGGATCGCC

ATGGGTATTTGGAAGAACTAACCTTACTGCTGTTGCTGCTTCTGCTGGTTGGCCTGGGGCAGCCCCAT
 GGCCAGCAGCTATGGCTCTGGCCCTGCGTTGGTTCCTGGGAGACCCACATGCCTTGTGCTGCTTGCTT
 GGCATTGCTGGGACAGCCCTGGATCAGCTCCTGGATGCCCACTGGCTGAGCCTGGTAGGAGCAGCTCTT
 ACCTTATTCTATTGCCTCTACAGCCACCCAGGGCTACGCTGGCTGCATAAAGATGTGGCTTTACCTT
 TCAAGATGCTTTTCTATGGCCTAAAGTTCAGGCGACGCCTTAACAAACATCCTCCAGAGACCTTTGTGGA
 TGCTTTAGAGCGGCAAGCACTGGCATGGCTGACCGGGTGGCCTTGGTGTGTACTGGGTCTGAGGGCTCC
 TCAATCACAAATAGCCAGCTGGATGCCAGGTCTGTGAGGAGCATGGGTCTGAAAGCAAAGCTGAAGG
 ATGCCGTAATCCAGAACACAAGAGATGCTGCTGCTATCTTAGTTCCTCCCGTCCAAGACCATTTCTGCTTT
 GAGTGTGTTTCTGGGGTTGGCCAAGTTGGGCTGCCCTGTGGCCTGGATCAATCCACACAGCCGAGGGATG
 CCCTTGCTACACTCTGTACGGAGCTCTGGGGCCAGTGTGCTGATTGTGGATCCAGACCTCCAGGAGAACC
 TGAAGAAGTCCCTCCCAAGCTGCTAGCTGAGAACATTACTGCTTCTACCTTGGCCACAGCTCACCCAC
 CCCGGGAGTAGAGGCTCTGGGAGCTTCCCTGGATGCTGCACCTTCTGACCCAGTACCTGCCAGCCTTCGA
 GCTACGATTAAGTGAAATCTCCTGCCATATTCATCTTTACTTCAGGGACCAGTGGACTCCCAAAGCCAG
 CCATCTTATCACATGAGCGGGTCATACAAGTGAGCAACGTGCTGTCTTCTGTGGATGCAGAGCTGATGA
 TGTGGTCTATGACGTCTACCTGTACCATACGATAGGGCTTGTCTTGGATTCTTGGCTGCTTACAA
 GTTGGAGCCACCTGTGTCTGGCCCCAAGTTCCTGCTCCCGATTCTGGGCTGAGTGCCGACAGCATG
 GCGTAACAGTGATCTTGTATGTGGTGAATCCTGCGGTACTTGTGTAACGTCCCTGAGCAACCAAGAAGA
 CAAGATACATACAGTGCCTTGGCCATGGGCAATGGACTTCGGGCAAATGTGTGGAATAACTTCCAGCAA
 CGCTTTGGTCCCATTGCGATCTGGGAATTCTACGGATCCACAGAGGGCAATGTGGCTTAATGAACTATG
 TGGGCCACTGCGGGGCTGTGGGAAGGACCAGCTGCATCCTTCGAATGCTGACTCCCTTTGAGCTTGTACA
 GTTCGACATAGAGACAGCAGAGCCTCTGAGGGACAAACAGGGTTTTTGCATTCTGTGGAGCCAGGAAAG
 CCAGGACTTCTTTGACCAAGGTTGAAAGAACCAACCCTTCTGGGCTACCGTGGTTCAGGCGCGAGT
 CCAATCGGAAACTTGTGCGAATGTACGACGCGTAGGAGACCTGACTTCAACACTGGGGACGTGCTGAC
 CTTGGACCAGGAAGGCTTCTTACTTTCAAGACCGCCTTGGTGACACCTTCCGGTGAAGGGCGAAAC
 GTATCTACTGGAGAGGTGGAGTGTGTTTTGTCTAGCCTAGACTTCTAGAGGAAGTCAATGTCTATGGTG
 TGCTGTGCCAGGTGTGAGGGTAAGGTTGGCATGGCTGCTGTGAAACTGGCTCCTGGGAAGACTTTTGA
 TGGGCAGAAGCTATACCAGCATGTCGGCTCCTGGCTCCCTGCCTATGCCACACCTCATTTTCATCCGTATC
 CAGGATCCCTGGAGATCACAACACCTACAAGCTGGTAAAGTACGGCTGGTGGCTGAGGGTTTTGATG
 TGGGGATCATTGCTGACCCCTCTACATACTGGACAACAAGGCCAGACCTTCCGGAGTCTGATGCCAGA
 TGTGTACCAGGCTGTGTGAAGGAACCTGGAATCTC

AGCGGACCGACGCGTACGCGGCCGCTCGAG - GFP Tag - GTTTAA

Protein Sequence: >MG210058 representing NM_009512
 Red=Cloning site Green=Tags(s)

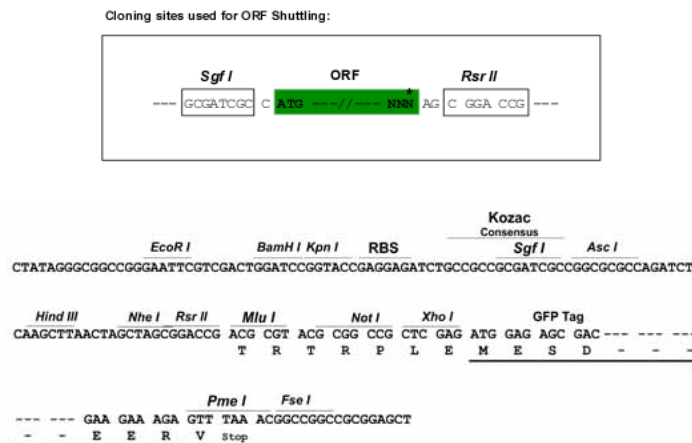
MGIWKKL TLLLLLLLL VGLGQPPWPAAMALALRWFLGDPTCLVLLGLALLGRPWISSWMPHWLSLVGAAL
 TLFLLPLQPPPGLRWLHKDVAF TKMLFYGLKFRRLNKHPPETFVDALERQALAWPDRVALVCTGSEGS
 SITNSQLDARSCQAAWVLKAKLKDAVIQNT RDAAILVLP SKTISALSVFLGLAKL GCPVAVINPHSRGM
 PLLHSVRSSGASVLI VDPDLQENLEEVLPKLLAENIHC FYLGHSSPTPGVEALGASLDAAPSDPVPASLR
 ATIKWKS PAIFIFTSGTTGLPKPAILSHERVIQVSNVLSFCGCRADDVYDVLPLYHTIGLVLGFLGCLQ
 VGATCVLAPKFSASRFWAECRQHGVTVILYVGEILRYLCNVPEQPEDIHTVRLAMGNL RANVWKNFQQ
 RFGPIRIWEFYGSTEGNVGLMNYVGHCGAVGRTSCILRMLTPFELVQFDIETAEPLRDKQGF CIPVEPGK
 PGLLLTKVRKNQPFLGYRGSQAESNRKL VANVRRVGDLYFNTGDVLTLDQEGFFYQDRLGDTFRWKGEN
 VSTGEVECVLSSDLFLEE VNVYGVVPGCEGKVGMAAVKLAPGKTFDGGKLYQHVRSWLPAYATPHFIRI
 QDSLEITNTYKLVKSRLVREGFDVGI IADPLYILDNKAQTFRSLMPDVYQAVCEGTWNL

SGPTRRRLE - GFP Tag - V

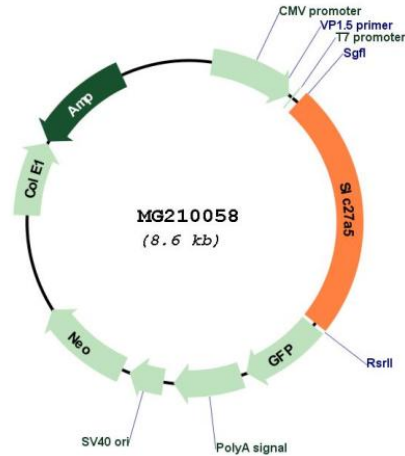
Restriction Sites:

SgfI-RsrII

Cloning Scheme:



Plasmid Map:



ACCN: NM_009512

ORF Size: 2067 bp

OTI Disclaimer: The molecular sequence of this clone aligns with the gene accession number as a point of reference only. However, individual transcript sequences of the same gene can differ through naturally occurring variations (e.g. polymorphisms), each with its own valid existence. This clone is substantially in agreement with the reference, but a complete review of all prevailing variants is recommended prior to use. [More info](#)

OTI Annotation: This clone was engineered to express the complete ORF with an expression tag. Expression varies depending on the nature of the gene.

Components: The ORF clone is ion-exchange column purified and shipped in a 2D barcoded Matrix tube containing 10ug of transfection-ready, dried plasmid DNA (reconstitute with 100 ul of water).

Reconstitution Method:

1. Centrifuge at 5,000xg for 5min.
2. Carefully open the tube and add 100ul of sterile water to dissolve the DNA.
3. Close the tube and incubate for 10 minutes at room temperature.
4. Briefly vortex the tube and then do a quick spin (less than 5000xg) to concentrate the liquid at the bottom.
5. Store the suspended plasmid at -20°C. The DNA is stable for at least one year from date of shipping when stored at -20°C.

RefSeq: [NM_009512.2](#)

RefSeq Size: 2310 bp

RefSeq ORF: 2070 bp

Locus ID: 26459

UniProt ID: [Q4LDG0](#)

Cytogenetics: 7 A1

Gene Summary: Acyl-CoA synthetase involved in bile acid metabolism. Proposed to catalyze the first step in the conjugation of C24 bile acids (choloneates) to glycine and taurine before excretion into bile canaliculi by activating them to their CoA thioesters. Seems to activate secondary bile acids entering the liver from the enterohepatic circulation (By similarity).[UniProtKB/Swiss-Prot Function]