

## Product datasheet for **MG210035**

### **Bmper (NM\_028472) Mouse Tagged ORF Clone**

#### **Product data:**

Product Type:	Expression Plasmids
Product Name:	Bmper (NM_028472) Mouse Tagged ORF Clone
Tag:	TurboGFP
Symbol:	Bmper
Synonyms:	3110056H04Rik; Cri; Crim3; Cv; CV-; CV-2; Cv2
Mammalian Cell Selection:	Neomycin
Vector:	pCMV6-AC-GFP (PS100010)
E. coli Selection:	Ampicillin (100 ug/mL)



[View online »](#)

**ORF Nucleotide Sequence:**

>MG210035 representing NM\_028472  
 Red=Cloning site Blue=ORF Green=Tags(s)

TTTTGTAATACGACTCACTATAGGGCGGCCGGAATTCGTCGACTGGATCCGGTACCGAGGAGATCTGCC  
 GCC**CGGATCGCC**

ATGCTCTGGTTCTTCAGCGTCAGGGCTCTGGCTGAGCGTCCTTGCCGACGCTCGCCTGGGATTACCTGCT  
 GCGTCTTGCTGCTGCTCAATTGCTCCGGGTCCCATGTCTCTGGCTTCTCCTTCTGACAGGGTCTGT  
 TGCAAAATGTGAAAATGAAGGGGAGGTCCTCAAATTCATTTATCACAGACAACCCTTGCATAATGTGT  
 GTGTGTTTGAACAAAGAGGTGACTTGTAAAGAGGAGAAGTGCCCTGTGCTGTACAGGGACTGTGCGTGG  
 CCATCAAGCAGAGAGGCGCTGTGTGAACGATGCAAAGGTTGTACCCATGAAGGAAGAACCTACAACAG  
 TTCCTTCAAGTGGCAAACCCCGGCTGAGCCATGTGTCTTCGGCAGTGCCAGGAGGGTGTGGTGACAGAG  
 TCTGAGGTGCGCTGTGTTGTTTATTGTAACAAAACCCGAGAGCATCAAGGAGCCTGCTGCCCTACCTGCC  
 CAGGCTGTGTGTTGAAGGTGTGCAATACCGGGAAGGAGAAGAATTTAGCCAGAAGGAAACAAATGTAT  
 TACATGCTCCTGCGTTGGAGGCAGGACACAGTGCCTGAGAGAAGTCTGTCCATTCTCTTGTCCCCAG  
 CACCTTAGTCACACACCCCTCAGGACAGTGTGCCCAAATGTTTGGGTACAGAAAAGTATTCGACCTTC  
 CCTTTGGGAGCTGCCTGTTTCGAGTGATGTTTATGACAATGGAGCCTCATTGTCTATGATAAAGTGCAC  
 AGTATGCACTTGAAGGACTCAACAATGGTTTGTAAAGAAGAGTGTCCACCCCTGGTGTCTGTAACAGT  
 GATGAGGATGCCTGTTGTGAAGACTGTCTTACGGGTGCCCCCTGAAGACATCAAAGTGTGCAAGTTTCG  
 GTAGCAAGATTTTCAGGGATGGAGAGATGTGGTCTCAGTCAACTGCAGCATCTGTGCTTGTGTGAAGGG  
 GAAGACAGAGTGTGAAAGAAGCAGTGTGTTCTGTGACGAGTGCACAGGTTAAAATCTCAACAGG  
 AAAGGATGCTGTCTATCTGCACTGAAAAACCTGGTGTGTGCACAGTATTCGGAGATCCCCACTACAACA  
 CTTTTGATGGGCGGACATTTAACTTTAGGGGACGTGTGAGTATGTTTTGACAAAAGACTGCTCCTCCCC  
 AGCCTCACCCCTCCAGGTGCTGGTGAAGAATGATGCACGGAGGACCCGTTCTTCTCCTGGACCAAGTCT  
 GTGGAGCTGATGCTGGGCGAAAGCACAGTCAGCCTGCAGCAGCACCTCACTGTGCGCTGGAATGGCTCTC  
 GCATTGCCCTTCCCTGCCACACACCCCACTTCCACATCGACCTGGACGGCTACCTTTTGAAGTACTAC  
 CAGAGCAGGTTTGGAGATATCGTGGATGGAGACAGTTTTGTGGAGGTCATGGCTGCCCTCATCTCAAG  
 GGCAAGCTCTGTGGTCTTTGTGGCACTACAATGGTCATAAACGTGATGACTTGATTGGTGGAGATGGGA  
 ACTTCAAGTTTGACGTGGATGACTTTGCTGAATCGTGGAGGGTGAATCCAACGAATTCTGCAACCGACC  
 ACAGAGAAAACCACTGAGCTCTGTCAAGGCACAGTGAAGGTGAAGCTTCGAGCCCATCGAGAATGC  
 CAGAACTCAAGTCTGGGAGTCCAGACCTGCCACTCTACAGTGGACTATACCCTTTCTACCGTCTCT  
 GTGTAACAGACATGTGTGAATGTCCAGTCCATAAAAACCTGTTACTGTGAGTCATTTCTGGCGTATACCCG  
 TGCTGTGAGAGAGGGGAATCAAAGTGCAGTGGGAACCTCAGCAGAGCTGTGCAGCCACCCAGTGCAAA  
 CATGGTGTGTGATGATACCTGTGCCAGGATGTGTGAAGACATGTGATAACTGGAATGAGATCGGCC  
 CATGCAATAAGCCCTGCATTGCAGGTTGCCACTGCCAGCAAATCTGGTCTTATAAGGGAAGGTGCAT  
 CAAGCCAGTCCTCTGTCTCAGCGA

**ACGCGT**ACGCGGCCGCTCGAG - GFP Tag - GTTTAA

**Protein Sequence:** >MG210035 representing NM\_028472  
 Red=Cloning site Green=Tags(s)

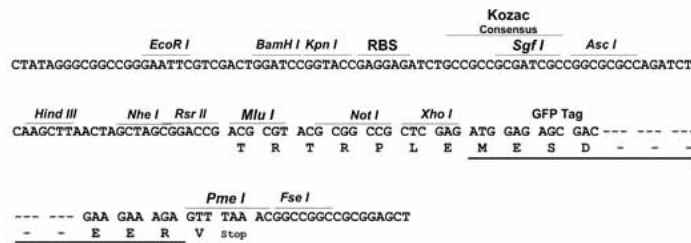
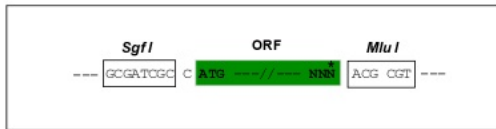
MLWFFSVRALAERPCRRSPGITCCVLLLLNCSGVPMSLASSFLTGSVAKCENEVEVLQIPFITDNPICIMC  
 VCLNKEVTCKREKCPVLSRDCALAIKQRGACCERCKGCTHEGRTYNSSFQWQTPAEPVLRQCQEGVVTE  
 SEVRCVHCKKPAEHQGAACPTCPGCVFEGVQYREGEEFQPEGNKITCSVGGRTQCVREVCPILSCPQ  
 HLSHTPSGQCCKLQQRKVFDPFGSCLFRSDVYDNGASFVYDNCTVCTCKDSTMVCKKKCSHPGVCNS  
 DEDACCEDCLLRVPPEDIKVKFGSKIIFRDGEMWSSVNCISICACVKGKTECRKKQCVPVSSCPQGKILNR  
 KGCCPICTEKGPGVCTVFGDPHYNTFDGRTFNFGTQCQYVLTKDCSSPASPFQVLVKNDARRTRFSWTKS  
 VELMLGESTVSLQQLTVRWNGSRIALPCHTPHFHIDL DGYLLKVTTRAGLEISWDGDSFVEVMAAPHLK  
 GKLCGLCGNYNGHKRDDLIGGDGNFKFDVDDFAESWRVESNEFCNRPQRKVPPEL CQGTVKVKLRAHREC  
 QKLSWEFQTCSTVDYTTFYRSCVDMCEP VHKNKYCESFLAYTRACQREGIKVHWEPQQSCAATQCK  
 HGAVYDTCGPGCVKTCDNWNEIGPCNKPCIAGCHCPANLVLHKGRICKPVLCPQR

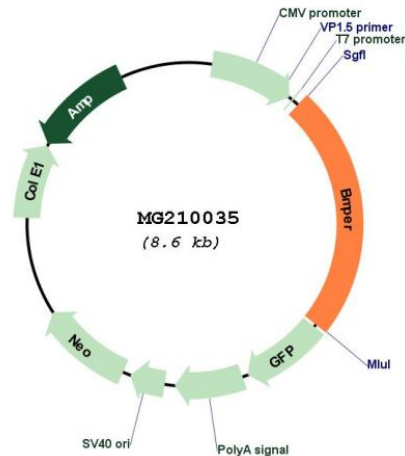
TRTRPLE - GFP Tag - V

**Restriction Sites:** SgfI-MluI

**Cloning Scheme:**

Cloning sites used for ORF Shuttling:



**Plasmid Map:**


**ACCN:** NM\_028472

**ORF Size:** 2055 bp

**OTI Disclaimer:** The molecular sequence of this clone aligns with the gene accession number as a point of reference only. However, individual transcript sequences of the same gene can differ through naturally occurring variations (e.g. polymorphisms), each with its own valid existence. This clone is substantially in agreement with the reference, but a complete review of all prevailing variants is recommended prior to use. [More info](#)

**OTI Annotation:** This clone was engineered to express the complete ORF with an expression tag. Expression varies depending on the nature of the gene.

**Components:** The ORF clone is ion-exchange column purified and shipped in a 2D barcoded Matrix tube containing 10ug of transfection-ready, dried plasmid DNA (reconstitute with 100 ul of water).

**Reconstitution Method:**

1. Centrifuge at 5,000xg for 5min.
2. Carefully open the tube and add 100ul of sterile water to dissolve the DNA.
3. Close the tube and incubate for 10 minutes at room temperature.
4. Briefly vortex the tube and then do a quick spin (less than 5000xg) to concentrate the liquid at the bottom.
5. Store the suspended plasmid at -20°C. The DNA is stable for at least one year from date of shipping when stored at -20°C.

**RefSeq:** [NM\\_028472.1](#), [NP\\_082748.1](#)

**RefSeq Size:** 3793 bp

RefSeq ORF: 2058 bp

Locus ID: 73230

UniProt ID: [Q8CJ69](#)

Cytogenetics: 9 A3

**Gene Summary:** This gene encodes a secreted protein that contains five Von Willebrand factor type C domains and a Von Willebrand factor type D domain and a trypsin inhibitory-like domain. The encoded protein binds to bone morphogenetic proteins (BMP) and regulates their activity. Mutation of the related gene in humans causes diaphanospondylodysostosis. [provided by RefSeq, Mar 2013]