

Product datasheet for **MG210030**

Masp2 (NM_001003893) Mouse Tagged ORF Clone

Product data:

Product Type:	Expression Plasmids
Product Name:	Masp2 (NM_001003893) Mouse Tagged ORF Clone
Tag:	TurboGFP
Symbol:	Masp2
Synonyms:	MAp19; MASP-2
Mammalian Cell Selection:	Neomycin
Vector:	pCMV6-AC-GFP (PS100010)
E. coli Selection:	Ampicillin (100 ug/mL)



[View online »](#)

**ORF Nucleotide
Sequence:**

>MG210030 representing NM_001003893
 Red=Cloning site Blue=ORF Green=Tags(s)

TTTTGTAATACGACTCACTATAGGGCGGCCGGGAATTCGTCGACTGGATCCGGTACCGAGGAGATCTGCC
 GCC**CGGATCGCC**

ATGAGGCTACTCATCTTCTGGGTCTGCTGTGGAGTTTGGTGGCCACACTTCTGGGTTCAAAGTGGCCTG
 AACCTGTATTCGGGCGCCTGGTGTCCCCTGGCTTCCCAGAGAAGTATGCTGACCATCAAGATCGATCCTG
 GACTACTGACACCCCTGGCTACCGCTGCGCCTCTACTTCACCCACTTTGACCTGGAACCTCTTTAC
 CGCTGCGAGTATGACTTTGTCAAGTTGAGCTCAGGGACCAAGGTCTGGCCACACTGTGTGGCAGGAGA
 GTACAGACACTGAGCAGGCACCTGGCAATGACACCTTCTACTCACTGGTCCCAGCCTAAAGTACACCTT
 CCACTCCGACTACTCCAATGAGAAGCCGTTACAGGGTTTGGGCCTTCTATGCAGCGGAGGATGTGGAT
 GAATGCAGAGTGTCTCTGGGAGACTCAGTCCCTTGTGACCATTATTGCCACAACACTTTGGGCGGCTACT
 ATTGCTCTGCAGAGCGGCTACGTTCTCCACCAGAACAAGCACACGTGCTCAGCCCTTTGTTCAAGCCA
 GGTGTTACAGGAAGATCTGGGTATCTCAGTAGCCCTGAGTACCCACAGCCATACCCCAAGCTCTCCAGC
 TGACCTACAGCATCCGCTGGAGGACGGCTTCACTGTCATCCTGGACTTCGTTGGAGTCTTCGATGTGG
 AGACGCACCTGAAGCCAGTGCCTTATGACTCCCTCAAGATCAAACAGACAAGGGGGAACACGGCCC
 ATTTTGTGGGAAGACGCTGCCTCCCAGGATTGAACTGACAGCCACAAGGTGACCATCACCTTTGCCACT
 GACGAGTCGGGAACACACAGGCTGGAAGATACACTACACAAGCACAGCACGGCCCTGCCTGATCCAA
 CGGCGCCACCTAATGGCAGCATTTACCTGTGCAAGCCATATATGCTCCTGAAGGACAGGTTTTCTGTCTT
 CTGCAAGACAGGCTTCGAGCTTCTGCAAGGTTCTGTCCCCTGAAATCATTCACTGCTGTCTGTGAGAAA
 GATGGATCTTGGGACCGCCGATGCCAGAGTGCAGCATTATTGATTGTGGCCCTCCTGATGACCTACCCA
 ATGGCCATGTGGACTATATCACAGGCCCTGAAGTGAAGTACTACAAAGCTGTGATTCACTACAGCTGTGA
 AGAGACTTCTACACAATGAGCAGCAATGGTAAATATGTGTGTGAGGCTGATGGATTCTGGACGAGCTCC
 AAAGGAGAAAACTCCCCCGTTTGTGAGCCTGTTTGTGGGCTGTCCACACACACTATAGGAGGACGCA
 TAGTTGGAGGGCAGCCTGCAAAGCCTGGTACTTTCCTTGGCAAGTCTTGTGCTGGGTCAAACACTACAGC
 AGCAGCAGGTGCACTTATACATGACAATTGGGTCTAACAGCCGCTCATGCTGTATATGAGAAAAGAAATG
 GCAGCGTCTCCCTGAACATCCGAATGGGCATCCTCAAAGGCTCTCACCTCATTACACTCAAGCCTGGC
 CCGAGGAAATCTTATACATGAAGGCTACACTCACGGTGTGGTTTTGACAATGATATAGCATTGATTAA
 ACTCAAGAACAAGTACAATCAACGGAAGCATCATGCCTGTTTGCCTACCGGAAAAGAAGCTGCATCC
 TTAATGAGAACAGACTTCACTGGAAGTGTGGCTGGCTGGGGTTAACCCAGAAGGGGCTTCTTGCTAGAA
 ACCTAATGTTTGTGGACATACCAATTGCTGACCACAAAATGTACCGCGTGTATGAAAAGCTCTATCC
 AGGAGTAAGAGTAAGCGTAACATGCTCTGTGCTGGCTTAGAGACTGGTGGCAAGGACAGCTGCAGAGGT
 GACAGTGGGGGGCATTAGTGTTCTAGATAATGAGACACAGCGATGGTTTGTGGGAGGAATAGTTTCTT
 GGGTTCCATTAATTGTGGGGCGCAGACCAGTATGGGGTCTACAAAAAGTCACTCAACTATATCCCTG
 GATTGAGAACATAATAAGTAATTTTC

ACGCGTACGCGGCCGCTCGAG – GFP Tag – GTTTAA

Protein Sequence: >MG210030 representing NM_001003893
 Red=Cloning site Green=Tags(s)

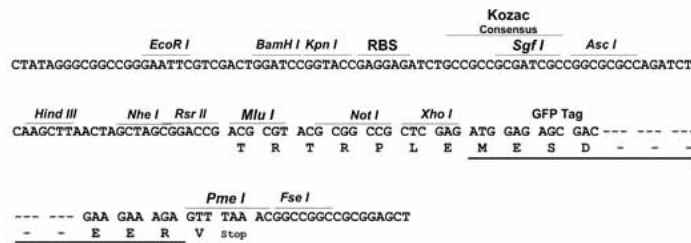
MRLLI FLGLLWSLVATLLGSKWPEPVFGR LVSPGFPEKYADHQDRSWTLTAPPGYRLRLYFTHFDLELSY
 RCEYDFVKLSSGKVLATLCGQESTDTEQAPGNDTFYSLGPSLKVTFHSDYSNEKPFTGFEAFYAAEDVD
 ECRVSLGDSVPCDHYCHNYLGGYYCSCRAGYVLHQNKHTCSALCSGQVFTGRSGYLSSPEYPQYPKLLS
 CTYSIRLEDGFSVILDFVESFDVETHPEAQCYPYDSLKIQTDKGEHGPFCGKTLPPRIETDSHKVITIFAT
 DESGNHTGWKIHYTSTARPCDPTAPPNGSISPVQAIYVLKDRFSVFCKTFELLQGSVPLKSFTAVCQK
 DGSWDRMPPECSIIDCGPPDDL PNGHVDYITGPEVTTYKAVIQYSCEETFYTMSSNGKYVCEADGFWTSS
 KGEKLPVCEPVCGLSTHTIGGRIVGGQPAKPGDFPWQVLLLGQTTAAAGAL IHDNWLTA AHAVYEKRM
 AASSLNIRMGILKRLSPHYTQAWPEEIFIHEGYTHGAGFDNDIALIKLKNKVTINGSIMPVCLPRKEAAS
 LMRTDFTGTVAGWGLTQKGLLARNLMFVDIPIADHQKCTAVYEKLYPGVRV SANMLCAGLETGGKDCRSG
 DSGALVFLDNETQRWFVGGIVSWG SINCGAADQYGVYTKVINYIPWIENIISNF

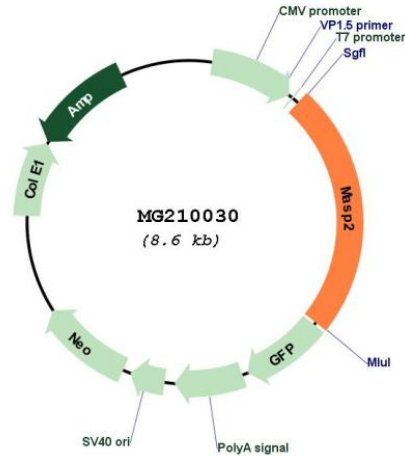
TRTRPLE - GFP Tag - V

Restriction Sites: SgfI-MluI

Cloning Scheme:

Cloning sites used for ORF Shuttling:



Plasmid Map:


ACCN: NM_001003893

ORF Size: 2055 bp

OTI Disclaimer: The molecular sequence of this clone aligns with the gene accession number as a point of reference only. However, individual transcript sequences of the same gene can differ through naturally occurring variations (e.g. polymorphisms), each with its own valid existence. This clone is substantially in agreement with the reference, but a complete review of all prevailing variants is recommended prior to use. [More info](#)

OTI Annotation: This clone was engineered to express the complete ORF with an expression tag. Expression varies depending on the nature of the gene.

Components: The ORF clone is ion-exchange column purified and shipped in a 2D barcoded Matrix tube containing 10ug of transfection-ready, dried plasmid DNA (reconstitute with 100 ul of water).

Reconstitution Method:

1. Centrifuge at 5,000xg for 5min.
2. Carefully open the tube and add 100ul of sterile water to dissolve the DNA.
3. Close the tube and incubate for 10 minutes at room temperature.
4. Briefly vortex the tube and then do a quick spin (less than 5000xg) to concentrate the liquid at the bottom.
5. Store the suspended plasmid at -20°C. The DNA is stable for at least one year from date of shipping when stored at -20°C.

RefSeq: [NM_001003893.2](#), [NP_001003893.1](#)

RefSeq Size: 3061 bp

RefSeq ORF: 2058 bp

Locus ID: 17175

UniProt ID: Q91WPO

Cytogenetics: 4 E2

Gene Summary: Serum protease that plays an important role in the activation of the complement system via mannose-binding lectin. After activation by auto-catalytic cleavage it cleaves C2 and C4, leading to their activation and to the formation of C3 convertase (By similarity).
[UniProtKB/Swiss-Prot Function]