

Product datasheet for **MG210029**

Fbln1 (BC007140) Mouse Tagged ORF Clone

Product data:

Product Type:	Expression Plasmids
Product Name:	Fbln1 (BC007140) Mouse Tagged ORF Clone
Tag:	TurboGFP
Symbol:	Fbln1
Mammalian Cell Selection:	Neomycin
Vector:	pCMV6-AC-GFP (PS100010)
E. coli Selection:	Ampicillin (100 ug/mL)



[View online »](#)

**ORF Nucleotide
Sequence:**

>MG210029 representing BC007140
 Red=Cloning site Blue=ORF Green=Tags(s)

TTTTGTAATACGACTCACTATAGGGCGGCCGGGAATTCGTCGACTGGATCCGGTACCGAGGAGATCTGCC
 GCC**CGGATCGCC**

ATGGAGCGCCCCGTGCCGTCGCGCCTCGTCCCGCTGCCGCTGCTGCTGCTCAGCAGCCTCTCGTGTCTGG
 CAGCCCGAGCGAATGCAGACATCTCCATGGAGGCTTGTGTCACGGATGGAAATCAGATGGCTAACCCAGCA
 CAGGGACTGCTCGCTGCCGTACACCTCAGAATCCAAGGAGTGCAGGATGGTCCAGGAGCAATGTTGTAC
 AACCAACTGGAAGAGCTGCACTGTGCCACGGGCATCAACCTGGCCAGCGAGCCAGAAGGCTGCGCCTCGC
 TCCACAGCTACAACAGTAGCCTTGAGACCATTTCATAAAGAGGTGCTGCCACTGTTGCATGCTGGGAAA
 GGCATCCCTGGCCGAGACCAGACCTGTGAACCCATTGTCATGATAAGCTACCAGTGTGGCTGGTGTTC
 CGTGCCTGCTGTGAAGGCCGGGAGAATTCAGACTTTGTCCAAGGCAACGGTGCAGACCTTCAGGACC
 CAGCTAAGATTCCTGACGAGGAGGACCAAGAAGACCCGTACCTGAATGACCGCTGTGAGGTGGCGGCC
 CTGTAAGCAGCAGTGCCGTGACACTGGGGACGAGGTGATCTGCTCTTGTGTTGTGGGCTACCAGCTGCAG
 TCGGATGGTGTCTCCTGCGAAGATATTAATGAATGCATCACAGGAGCCATAACTGCCGGCTGGGAGAAT
 CCTGCATCAATACAGTGGGCTCTTTCCGCTGCCAGCGGGACAGCAGCTGTGGGACTGGCTATGAGCTCAC
 AGAGGATAATAACTGCAAAGATATTGACGAATGTGAGACTGGTATTTCATAACTGCCCCCCGATTTTATC
 TGTGAGAACTCTGGGATCCTTCCGTTGCAGACCGAAGCTGCAGTGCAAGAGCGGCTTCATACAGGATG
 CTCTAGGCAACTGCATTGATATCAATGAGTGTTAAGTATCAGTGTCCATGCCCTGTGGGGCAGACATG
 CATCAATACAGAGGGCTCCTACACATGCCAGAAGAATGTGCCAACTGTGGCCGTGGTTATCATCTCAAT
 GAAGAGGGGACCCGCTGTGTTGATGTGGATGAGTGTCCCCACCAGCGGAGCCCTGTGGGAAGGGACACC
 ACTGCCTGAACCTCCCCGGCAGCTTCCGCTGCGAGTGCAAGGCTGGCTTCTATTTTGTGATGCATCAGCAG
 GACCTGCGTGGATATCAACGAGTGCCAGCGCTATCCCGGGCGCCTGTGTGGCCACAAGTGTGAGAACACG
 CAGGCTCCTTCCACTGCAGCTGCTCCGCCGTTTCCGGCTGTCTGTGGACGGCCGGTCTTGTGAAGATG
 TGAACGAGTGTCTCAACAGCCCTTGACGCCAGGAGTGCCTAATGTCTATGGCTCCTACCAGTGTATTG
 CCGACGAGGTTACCAGCTCAGTGACGTGGATGGGGTACCTGCGAAGATATTGATGAGTGTGCCCTGCC
 ACTGGAGGTCACATCTGCTCCTACCGCTGCATCAACATCCCCGGAAGCTTCCAGTGCAGCTGCCCTCAT
 CTGGCTACAGGCTAGCTCCCAATGGCCGCAACTGCCAAGACATTGATGAGTGTGTGACCGGCATCCACAA
 CTGTTCCATCAACGAGACTTGTCTCAACATCCAGGGCAGCTTCCGCTGTCTGTCTTTGAATGCCCCGAG
 AACTATCGCCGCTCCGCAGACACCCGCTGTGAGCGCTTGCCTTGCCATGAGAACCAGGAGTGCCCCAGGC
 TGCTCTGAGAATAACCTACTACCACCTCTTTTTCCACCAACATCCAAGTGCCAGCGGTGGTTTTCCG
 CATGGGCCCTTCCAGTGTGTCCCTGGGGACAGCATGCAGCTGGCCATCACCGCTGGCAATGAGGAGGGC
 TTTTTCACCACTCGAAAGGTGAGCCACCACAGTGGGGTGGTGGCCCTCACCAAACCCATCCCTGAGCCCA
 GGGACTTGCTCCTGACCGTCAAGATGGATCTTTATCGCCACGGCACAGTCAAGTCTCTTTGTGGCCAAAGCT
 TTTTCATCTTTGTGCTGCAGAGCTC

ACGCGTACGCGGCCGCTCGAG – GFP Tag – GTTTAA

Protein Sequence: >MG210029 representing BC007140
 Red=Cloning site Green=Tags(s)

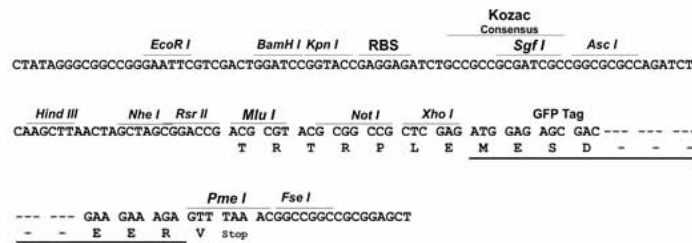
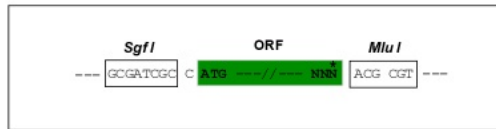
MERPVP SRLVPLPL LLLSSLSLLAARANADISMEACCTDGNQMANQHRDCSLPYTSESKECRMVQEQCCH
 NQLEELHCATGINLASEPEGCASLHSYNSLLETIFIKRCHCCMLGKASLARDQTCEPIVMISYQCGLVF
 RACCVKARENSDFVQNGADLQDPAKIPDEEDQEDPYLNDRRCRGGGPKQQRDTGDEVICSCFVGYQLQ
 SDGVSCEDINECITGSHNCRLGESCINTVGSFRCQRDSSCGTGYELTEDNNCKDIDECETGIHNCPPDFI
 CQNTLGSFRCRPLQCKSGFIQDALGNCIDINECLSSAPCPVGQTCINTEGYSYTCQKNVPNCGRGYHLN
 EEGTRCVDVDECSPPAEPGCGKHHCLNSPGSFRCECKAGFYFDGISRTCVDINECQRYPGRLCGHKCENT
 PGSFHCSCSAGFRLSVDGRSCEDVNECLNSPCSQECANVYGSYQCYCRRGYQLSDVDGVTCEDIDECALP
 TGGHICSYRCINIPGSFQCSCPSSGYRLAPNGRNCQDIDECVTGIHNCINETCFNIQGSFRCLSFECPE
 NYRRSADTRCERLPCHENQECPRPLRITYYHLSFPTNIQVPAVVFRMGPSAVPGDSMQLAITAGNEEG
 FFTTRKVVSHHSGVVALTKPIPEPRDLLLTVKMDLYRHGTVSSFVAKLFI FVSAEL

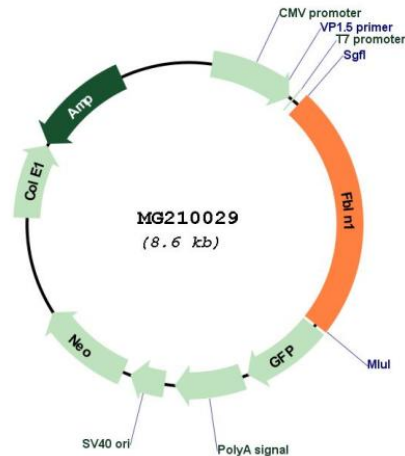
TRTRPLE - GFP Tag - V

Restriction Sites: SgfI-MluI

Cloning Scheme:

Cloning sites used for ORF Shuttling:



Plasmid Map:


ACCN: BC007140

ORF Size: 2055 bp

OTI Disclaimer: The molecular sequence of this clone aligns with the gene accession number as a point of reference only. However, individual transcript sequences of the same gene can differ through naturally occurring variations (e.g. polymorphisms), each with its own valid existence. This clone is substantially in agreement with the reference, but a complete review of all prevailing variants is recommended prior to use. [More info](#)

OTI Annotation: This clone was engineered to express the complete ORF with an expression tag. Expression varies depending on the nature of the gene.

Components: The ORF clone is ion-exchange column purified and shipped in a 2D barcoded Matrix tube containing 10ug of transfection-ready, dried plasmid DNA (reconstitute with 100 ul of water).

Reconstitution Method:

1. Centrifuge at 5,000xg for 5min.
2. Carefully open the tube and add 100ul of sterile water to dissolve the DNA.
3. Close the tube and incubate for 10 minutes at room temperature.
4. Briefly vortex the tube and then do a quick spin (less than 5000xg) to concentrate the liquid at the bottom.
5. Store the suspended plasmid at -20°C. The DNA is stable for at least one year from date of shipping when stored at -20°C.

RefSeq: [BC007140.1](#)

RefSeq Size: 2222 bp

RefSeq ORF: 2057 bp

Locus ID: 14114

Cytogenetics: 15 E2

Gene Summary: Incorporated into fibronectin-containing matrix fibers. May play a role in cell adhesion and migration along protein fibers within the extracellular matrix (ECM). Could be important for certain developmental processes and contribute to the supramolecular organization of ECM architecture, in particular to those of basement membranes.[UniProtKB/Swiss-Prot Function]