

Product datasheet for **MG210015**

Prpf3 (NM_027541) Mouse Tagged ORF Clone

Product data:

Product Type:	Expression Plasmids
Product Name:	Prpf3 (NM_027541) Mouse Tagged ORF Clone
Tag:	TurboGFP
Symbol:	Prpf3
Synonyms:	3632413F13Rik
Mammalian Cell Selection:	Neomycin
Vector:	pCMV6-AC-GFP (PS100010)
E. coli Selection:	Ampicillin (100 ug/mL)



[View online »](#)

ORF Nucleotide
Sequence:

>MG210015 representing NM_027541
 Red=Cloning site Blue=ORF Green=Tags(s)

TTTTGTAATACGACTCACTATAGGGCGGCCGGGAATTCGTCGACTGGATCCGGTACCGAGGAGATCTGCC
 GCC**CGGATCGCC**

ATGGCGCTGTCTAAGCGGGAGCTGGATGAGCTGAAGCCATGGATAGAGAAGACGGTGAAGAGAGTGTCTGG
 GCTTCTCAGAGCCACAGTGGTCACTGCAGCCTTGAACCTGTGGGGAAGGGCATGGACAAAAAGAAGGC
 GGCTGATCACCTGAAACCTTTTCTTGATGATTCCACTCTCCGATTTGTGGATAAGCTGTTTGAGGCTGTG
 GAGGAAGGCCGAAGCTCAAGGCATTCCAAGTCTAGTAGTACAGAAGCAGAAAAGCGAGAGTTAAAGGAGG
 TGTGGTGGTACTCTGAGATCTCAAAGGAATCATCGGGGTAAGAAGCGGGGATACCCCGTTTGA
 GGAGGTAGAAGAGGAGCCAGAGGTGATCCCTGGACCTCCATCAGAAAGCCCTGGCATGCTAACAAAGCTC
 CAGATCAAACAGATGATGGAAGCAGCAACACGACAAATCGAGGAACGGAAAAACAGCTGAGCTTCATCA
 GCCCCCTGCACCTCAGCCAAAGACACCTTCTTCTTCCCAACCTGAGCGACTTCCATCGGCAACACTAT
 TCAGCCCTCCCAGGCCGCTACCTTTATGAACGATGCCATTGAGAAGGCGAGGAAAGCTGCCGAGCTGCAA
 GCCCGAATCCAGGCCAGCTGGCATTGAAGCCAGGGCTTATTGGCAATGCCAACATGGTGGGCTAGCTA
 ATCTCCATGCCATGGGCATAGCTCCACCGAAAAGTAGAGTTAAAAGACCAAATAAGCCTACCCCATTTGAT
 CCTGGACGAGCAAGGCCCACTGTGGATGCAACAGGCAAGGAGGTGGAGCTCACACATCGCATGCCACC
 CTGAAGGCAAACATTCGGGCTGTGAAGAGGGAACAGTTCAAGCAGCAGCTAAAAGAAAAGCCATCAGAAG
 ACATGGAGTCTAATACCTTTTTTACCCCGAGTCTCAATTGCCCTTCCCAGCGCCAAAGACGCACTTT
 TAAATTCATGACAAGGGCAAATTTGAGAAAATGCTCAACGATTACGGACAAAGGCTCAATTGGAGAAG
 CTGCAAGCAGAGATTTACAAGCTGCTAGAAAAACAGGCATTCACTTCGACTAGACTTGCCCTCATTG
 CTCCAAAAAGGAGCTAAAGGAAGGCGATATCCCTGAGATTGAGTGGTGGGACTCGTACATCATACCCAA
 CGGCTTTGACCTTACAGAGGAAAAATCCCAAGAGAGAAGATTATTTTGGAAATCACAAATCTTGTTGAACAT
 CCAGCCCAGCTTAATCCTCCAGTTGACAATGATACACCAGTTACCTTGGGGTATATCTTACGAAGAAGG
 AGCAGAAGAACTTCGGAGGCAAACAAGAAGGGAAGCACAGAAAGAGCTACAAGAGAAAGTCAAGGCTAGG
 CCTGACACCTCCTCCAGAGCCCAAAGTGAAGTCTCAAATTTAATGCGAGTATTAGGAACAGAAGCAGTT
 CAAGACCCTACAAGGTAGAAGCCATGTCAGAGCTCAGATGGCAAAGAGACAGAAAGCGCATGAAGAGG
 CCAACGCGGCCGAAAACCTTACAGCAGAACAGAGAAAGGTCAAGAAAATAAAAAGCTTAAAGAAGACAT
 TTCACAGGGGTGCACATATCTGTGTATAGAGTTCGAAATTTGAGCAACCCAGCCAAGAAGTTCAAGATT
 GAGGCCAATGCTGGGAGCTGTACTGACAGGGTGGTGGTGTGCACAAAGATGTCAACGTGGTGGTAG
 TGAAGGGGGCCCAAAGCCAGAAGAAATTTAAGCGTCTCATGTACATCGGATAAAGTGGGATGAGCA
 GACATCTAACACGAAGGGAGATGATGATGAGGAATCTGATGAAGAAGCTGTGAAGAAAACAAATATGT
 GTACTAGTATGGGAGGTACAGCCAAAGACCGGAGCTTTGGAGAGATGAAGTTTAAACAGTGCCTACAG
 AGAACATGGCTCGTGAGCATTTCAAAAGCATGGGGCTGAACACTACTGGGACCTTGCACTGAGTGAATC
 TGTGTTGGAGTCCACCGAC

ACGCGTACGCGGCCGCTCGAG – GFP Tag – GTTTAA

Protein Sequence: >MG210015 representing NM_027541
 Red=Cloning site Green=Tags(s)

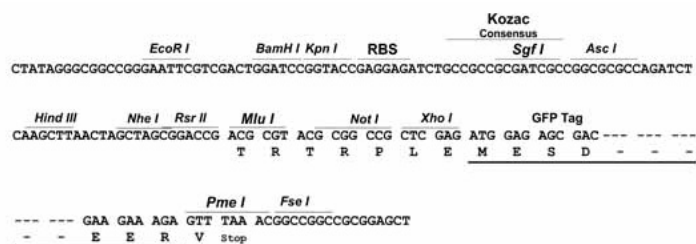
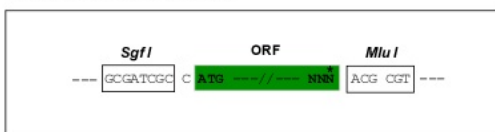
MALSKRELDLKPWIEKTVKRVLGFSEPTVVTAALNCVGGKMDKKAADHLKPFLDDSTLRFVDKLF EAV
 E EGRSSRHSKSSSDRSRKRELKEVFGDDSEISKESSGVKKRRI PRFEEVEEVEEPIVGPSPGMLTKL
 QIKQMEEAATRQIEERKKQLSFI SPPAPQPKTPSSSQPERLPIGNTIQPSQAATFMNDAIEKARKAAELQ
 ARIQAQLALKPGLIGNANMVGLANLHAMGIAPPKVELKDQTKPTPLILDEQGRTVDATGKEVELTHRMP
 LKANIRAVKREQFKQLKEKPESEDMSNTFFDPRVSIAPSQRQRRTFKFHDKGKFEKIAQRLRTKAQLEK
 LQAEISQAARKTGHTSTRLLAL IAPKKELKEGDIPEIEWWDSYIIPNGFDL TEENPKREDFYGITNLVEH
 PAQLNPPVDNDTPVTLGVYLTKKEQKKLRRQTRREAQKELQEKVRLGLTPPPEPKVRISNLMRVLGTEAV
 QDPTKVEAHVRAQMAKRQKAHEEANAARKLTAEQRKVKKIKKKLEDISQGVHISVYRVRNLSNPAKKFKI
 EANAGQLYLTGVVVLHKDVNVVVVEGGPKAQKFKRLMLHRIKWDEQTSNTKGDDEESDEEAVKKTNKC
 VLVWEGTAKDRSFGEMKFKQCPTENMAREHFKKHGAEHYDLAL SESVLESTD

TRTRPLE - GFP Tag - V

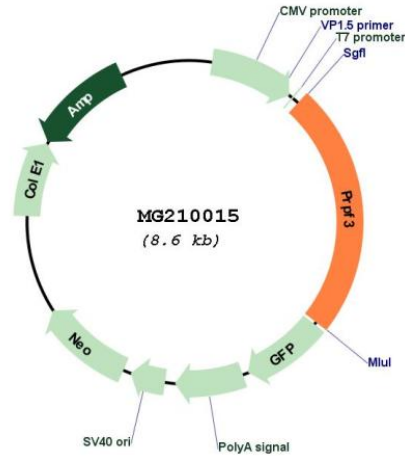
Restriction Sites: SgfI-MluI

Cloning Scheme:

Cloning sites used for ORF Shuttling:



Plasmid Map:



ACCN: NM_027541

ORF Size: 2049 bp

OTI Disclaimer: The molecular sequence of this clone aligns with the gene accession number as a point of reference only. However, individual transcript sequences of the same gene can differ through naturally occurring variations (e.g. polymorphisms), each with its own valid existence. This clone is substantially in agreement with the reference, but a complete review of all prevailing variants is recommended prior to use. [More info](#)

OTI Annotation: This clone was engineered to express the complete ORF with an expression tag. Expression varies depending on the nature of the gene.

Components: The ORF clone is ion-exchange column purified and shipped in a 2D barcoded Matrix tube containing 10ug of transfection-ready, dried plasmid DNA (reconstitute with 100 ul of water).

Reconstitution Method:

1. Centrifuge at 5,000xg for 5min.
2. Carefully open the tube and add 100ul of sterile water to dissolve the DNA.
3. Close the tube and incubate for 10 minutes at room temperature.
4. Briefly vortex the tube and then do a quick spin (less than 5000xg) to concentrate the liquid at the bottom.
5. Store the suspended plasmid at -20°C. The DNA is stable for at least one year from date of shipping when stored at -20°C.

RefSeq: [NM_027541.2](#), [NP_081817.2](#)

RefSeq Size: 2733 bp

RefSeq ORF: 2052 bp

Locus ID: 70767

UniProt ID: [Q922U1](#)

Cytogenetics: 3 F2.1

Gene Summary: Plays role in pre-mRNA splicing as component of the U4/U6-U5 tri-snRNP complex that is involved in spliceosome assembly, and as component of the precatalytic spliceosome (spliceosome B complex).[UniProtKB/Swiss-Prot Function]