

Product datasheet for **MG210010**

Mum1 (NM_023431) Mouse Tagged ORF Clone

Product data:

Product Type:	Expression Plasmids
Product Name:	Mum1 (NM_023431) Mouse Tagged ORF Clone
Tag:	TurboGFP
Symbol:	Mum1
Synonyms:	2610019J09; 9430059D04Rik; UBE-1C2
Mammalian Cell Selection:	Neomycin
Vector:	pCMV6-AC-GFP (PS100010)
E. coli Selection:	Ampicillin (100 ug/mL)



[View online »](#)

ORF Nucleotide
Sequence:

>MG210010 representing NM_023431
Red=Cloning site Blue=ORF Green=Tags(s)

TTTTGTAATACGACTCACTATAGGGCGGCCGGAATTCGTCGACTGGATCCGGTACCGAGGAGATCTGCC
GCC**CGGATCGCC**

ATGACGGATGCCAAGTATGTCCTCTGCCGATGGGGGAAGCGACTGTGGCCTGCGAAGGTTTTGGCCAGAA
CCGAGACTTCAGCAAAAAACAAGAAAAAGAAGGAATTCCTCTAGATGTTTCAGATACTCTCGCTGAAGGA
AAAGATCCAGGTTAAGAGCTCAGCCGTGGAGGCCCTGCAGAAGTCGCACATTGAGAACATTGCTGCCTTC
CTGGCCTCTCAGAATGAAGTCCCAGCTACTCCCCTGGAGGAGCTGACTTACCGACGCTCCCTGCGAGTGG
CCCTGGATGTCTTGAATGAGAGGACCAGTTTGTGCTGAAAGTCATCCAATAGAAGATGGGATTACACT
GTCTCAGAAGGAGAAAACAGATGCAGATGTGGCCTCGCAGGTCTCCAGTGTCTCTCCATCTCTCCTC
GGTGAAGATGGTCAAGCCGTGGTAGCCAGTGCATCCAAGAGGAGGTGGAGTACAGTCAAAAAGCC
TGTTGCCGTCTGCTGCATTAGAAGATCATCTCAGGTGCCAAGTGGGCCCAAGACAGGCCTCTCAGAGAG
TGGAGCTGGAGACAAGTCTCAGGATGATTCTGGGTTACAGCTGGACCATGGGCAGGAGAGACAACCAAA
AAGAGGCAGAGGAATTTGGGAGAGAAACCTACCCGGCGCCGAAGATCAGAGTCTGGCCTTTCCAAGGGAG
AAAGTGTCTTAAAGAGCCAGGGACAGGCATCCAGCTGTGTGGCCCTGGCTTACCTAGGCCGCCCTCCCA
AACCAGGGACGAGGAGCCCTGTGCCGGGTCAAAGGCTGTGACTGGGTCAAGTCATCAGGCAACATCAGG
CCACTCTCGGCCTCTGAGAGAAGCAGAGGATGCCCCACAAGAGACCACGCTTGGATGGAGGCCAGAACC
CACCTACCAGGCAGCTGGGGACTAGAAGTGTGGGGCAGCGCCCTGCCCTAGGAGCTGTTCTGGGGAGGT
CACGATGCTGTGAGTGTGGAGCGGTGACAAACCAGAGGAAGATCCTGTGTCTCAGAAGAATCCACA
GGGTTCAAGTCCACACTCCCTGCTGGAGGAGGAGGAGGAGGAAGAGGAGGAACCACCTCGGATCCTTC
TGATCACGAACCACGGTCAATTTGAAGTAGGAATGCTGGTCTGGCTTAAATACCAAAAAATCCCAATTCTG
GCCAGCTGTGGTCAAGAGTGTCCGGCGAAGAGACAAGAAGGCCAGTGTGCTCTTCATTGAGGGCAACATG
AACCCCAAGGGCCGAGGAATCACTGTGTGCTGCGACGGCTCAAGCACTTTGACTGCAAGGAAAAGCACG
CACTGCTGGACAGAGCCAAGGAGGACTTTGCCAGGCCATTGGCTGGTGTGTTTCACTCATCACTGACTA
CCGTGTGCGGCTGGGATGCGGCTCCTTTGCTGGGTCTTTCTTGAATACTACGCTGCTGATATCAGCTAC
CCTGTGCGCAAGTCTATCCAACAGGACGTCTGGGGACCAGGTTTCTCAGCTGGGCAAGGGGGACCCTG
AGGAGCCTGTAGGGGACAGCCAGCTGGGACAGTGGCGCCATGCAGGAAGGTGTGCTGACCGCTCCAG
GGCTGCACGGGATAGAGCCAACCAGAAGCTGGTGGAGTACATCGTGAAGGCCAAGGGTGCAGAGAGCCAC
CTGCGGGCTATCTTGACAGCCGAAGCCCTCACGCTGGCTGAAGACGTTCTGAGCTCCAGTCAGTGGC
TGACTTGCATGGAGACATACCTGGAGGATGAGGGCAGCTGGATGAGGTGGTGGAGTACCTGCAGGGCGT
CTGCAGAGACATGGACGGCCAGGTGCCTGAGCGCGGCAGTGGAGACCGCATTTCGTTTCATCTTGATGTG
CTGCTGCCCGAGGCAATCATCTGTGCCATTTCCGCGGTGGAGGCGGTGGATTACAAGACAGCCGAGCAGA
AGTACATTCGTGGCCCCACACTTAGCTACCGGGAAAAGGAAATCTTTGACAATGAACTCCTGGAGGAGAG
GAACCGACGCCGTCGC

ACGCGTACGCGGCCGCTCGAG – GFP Tag – GTTTAA

Protein Sequence: >MG210010 representing NM_023431
 Red=Cloning site Green=Tags(s)

MTDAKYVLCRWGKRLWPAKVLARTETSAKNKKKKEFFLDVQILSLKEKIQVKSSAVEALQKSHIENIAAF
 LASQNEVPATPLEELTYRRSLRVALDVLNERTSLSPESHPIEDGITLSQKEKTDADVASQVSSAPSPSLL
 GEDGQAVVAQCASKRRSEYSSKLLPSSALEDLRCQVGPKTGLSESGAGDKSQDDSGQLDHDGQESTTK
 KRQRNLGEKPTRRRRSEGLSKGESVLKSEQGASSCVLALASPRPPSQTRDEEPCAGVKGCDWVKSSGNIR
 PLSASERSRGCPTRPRLDGGQNPTRQLGTRTVGAAPCPRSCSGEVTMLCSAGAGDKPEEDPVSSEEST
 GFKSTHSLLEEEEEEEEEPPRILLYHEPRSFVGMVLVWLKYQKYPFWPVPVKSVRRRDKKASVLFIEGMM
 NPKGRGITVSLRRLKHFDCKEKHALLDRAKEDFAQAIIGWCVSLITDYRVRLGCGSFAGSFLEYAADISY
 PVRKSIQQDVLGTRFPQLGKGDPEEPVGDSQLGQWRPCRKVL PDRSRAARDRANQKLVEYIVKAKGAESH
 LRAILHSRKPSRWLKTFLSSSQVTCMETYLEDEAQLDEVVEYLQGVCRMDGQVPERGSGDRIRFILDV
 LLPEAIICAISAVEAVDYKTAEQKYIRGPTLSYREKEIFDNELLEERNRRRR

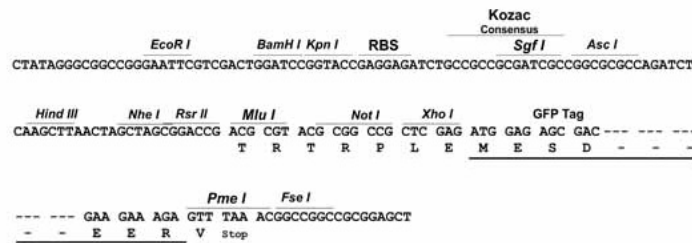
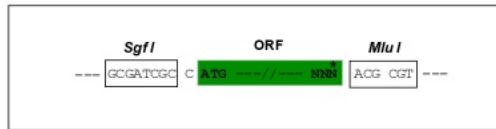
TRTRPLE - GFP Tag - V

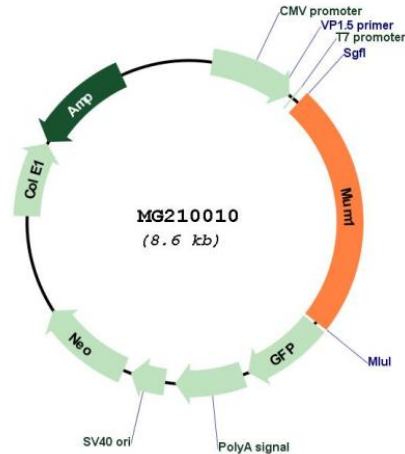
Restriction Sites:

Sgfl-MluI

Cloning Scheme:

Cloning sites used for ORF Shuttling:



Plasmid Map:


ACCN: NM_023431

ORF Size: 2046 bp

OTI Disclaimer: The molecular sequence of this clone aligns with the gene accession number as a point of reference only. However, individual transcript sequences of the same gene can differ through naturally occurring variations (e.g. polymorphisms), each with its own valid existence. This clone is substantially in agreement with the reference, but a complete review of all prevailing variants is recommended prior to use. [More info](#)

OTI Annotation: This clone was engineered to express the complete ORF with an expression tag. Expression varies depending on the nature of the gene.

Components: The ORF clone is ion-exchange column purified and shipped in a 2D barcoded Matrix tube containing 10ug of transfection-ready, dried plasmid DNA (reconstitute with 100 ul of water).

Reconstitution Method:

1. Centrifuge at 5,000xg for 5min.
2. Carefully open the tube and add 100ul of sterile water to dissolve the DNA.
3. Close the tube and incubate for 10 minutes at room temperature.
4. Briefly vortex the tube and then do a quick spin (less than 5000xg) to concentrate the liquid at the bottom.
5. Store the suspended plasmid at -20°C. The DNA is stable for at least one year from date of shipping when stored at -20°C.

RefSeq: [NM_023431.5](#), [NP_075920.4](#)

RefSeq Size: 3717 bp

RefSeq ORF: 2049 bp

Locus ID: 68114

UniProt ID: [Q6DID5](#)

Cytogenetics: 10 C1

Gene Summary: Involved in the DNA damage response pathway by contributing to the maintenance of chromatin architecture. Recruited to the vicinity of DNA breaks by TP53BP1 and plays an accessory role to facilitate damage-induced chromatin changes and promoting chromatin relaxation. Required for efficient DNA repair and cell survival following DNA damage (By similarity).[UniProtKB/Swiss-Prot Function]