

## Product datasheet for **MG209988**

### **Maml3 (NM\_001004176) Mouse Tagged ORF Clone**

#### **Product data:**

Product Type:	Expression Plasmids
Product Name:	Maml3 (NM_001004176) Mouse Tagged ORF Clone
Tag:	TurboGFP
Symbol:	Maml3
Synonyms:	AV234550; BC049812; Mam-2; mKIAA1816
Mammalian Cell Selection:	Neomycin
Vector:	pCMV6-AC-GFP (PS100010)
E. coli Selection:	Ampicillin (100 ug/mL)



[View online »](#)

**ORF Nucleotide  
Sequence:**

>MG209988 representing NM\_001004176  
 Red=Cloning site Blue=ORF Green=Tags(s)

TTTTGTAATACGACTCACTATAGGGCGGCCGGAATTCGTCGACTGGATCCGGTACCGAGGAGATCTGCC  
 GCC**CGGATCGCC**

ATGTC**CCCCAGCAGAGCAGCTCAAACAGATGGCTGCCAGCAACAACAGAGGGCAA**AACTCATGCAGCAGA  
 AGCAACAGCAGCAGCAGCAACAGCAGCAGCAGCAGCAACAACAACAACAGCAGCACTCAAATCA  
 GACTTCAAGTTGGTCTCCCTTAGGGCTCCGTCAGTCCATATGGAACAGCTTTTCTCAGAAAAACCA  
 AATAGCCCAATGATGTACCCCAAGCCTTAAACAACAAAGCACTATAGTGCCTGCAATGGCAAACAGCC  
 TGCAGAAGACGACCATGAACAACACCTCCCTTCAATCACATGAATATGATCAGTCAGCAGCCAAATAA  
 CTTGGGTACAACCTCTTAAACAACAGCACAATATTCTACCTATGGCAACACTAAGCCTCTGACCCAT  
 TTTAATGCGGACTTGAGTCGAGAATGACGCCCTATGGCAACCCCAACAAAACCCCTTGATGCCCT  
 ACATCCAGCAGCCTCAGCAGTCGCAGCAGCCAGCCGAGCCGAGCCAGCAGCAGCCACCGCTCCCCC  
 GCAGCTGCAGGCTCCAGGGCGCACCTGAGCGAGGACCAGAAACGCATGCTTCTCATTAAAGCAGAAAGGA  
 GTGATGAACCCACCCATGGCCTATGCTGCGCTTCTGCCACGGTCAGGAGCAGCAGCAGTCGGTATTC  
 CCCGGACCACAGGCCCTATGCAGAACTCTGTGCCCTCGGGTTCGGGCAGCATGGTCTCCGGAGCCAGTCC  
 TGGGGGCTTGGATTTCTAGGCAGCCAGCCACAGGCAGCCATCATGAAGCAGATGCTAATGGACCAACGG  
 GCCCAGCTGATGGAGCACCAGAAGCAACAGTTCCTTCGGGAGCAGAGGCAGCAGCAGCAACAGCAGCAGC  
 AGCAGCAACAGCAGCAGCAGCAGCAGCAGCAGATCCTGGCTGAGCAGCAGTTACAGCAGCCGACCTGCC  
 CCGTCAGCACCTCCAGCAACAGCGGAACCCATACCCAGTCAGCAGGTCAACAGTTTCAAGGTTCAACC  
 CAGGACATAGCAGCTGTGAGAAACAGGTGGCTCTCCAGAGCATCGGAGCATCGAGTTGATTGCACAGA  
 ATGCGGGCATGATGGGAATGGGACCTCCAGAAACCCAGGGACGATGGCTACGGCAGCAGCGCAGTCAGA  
 GATAGGTCTGGCCTCTTACAGTGCCCTCCAACCAGCCAACCAGGAATGTACAACATGAACACAGGAATG  
 ACCCAAATGTTGCAGCATTCCAATCAGAGTGGAATGGGCATCCACACAACCAATCCAGGGACCCAGGC  
 CGCCAGCTCCAGCCAGGGGTCGGCATGGTGAGCGGCTTCGGTCAGAGCATGCTGGTGAACCTCGGCTCT  
 CTCGCAGCAGCACCAGCAGCTGAAAGGGTCTGTGGCCAGGCCTTGCTAGGCCCCAGGGCCCTCCAAGG  
 CTTCAGAGTGTCATGGGAACCGTCCAGCAAGGAGCACAAAACCTGGCAACAGAGGAGCTTACAAGGGTGC  
 CTGGGAGGACTAGTGGGAGTTGGGACCATTCAACAATGGCGCCAGCTACCCATTGCAAGCCGTCAGCC  
 AAGACTGACCAACAGCACTTCCCACAGGGGTGAGCCAGCCGTCATGGATGCTAACACTGGCGCAGTG  
 AGAACCTCAACCCAGCAGCTATGGGACGTGAGATGATGCCAACCTGGCAGGACAGCAGAGTGCCAGCC  
 AGGTGAGGCCATTGGTCAATGCCTGGTCTGAGCCAGGGTGTCCCTGGCATGCCAGCATTACGCCAGCCCC  
 AGCACAGCAGCAGATAGCGGGTGGCAACTTTGCTGCGAGCAACCAGGGCCAGGCCTATGAGCGGACCCCT  
 GCTCAGGACATGTATACAGTTATAGCGGGAAGGTGTGGGGCTGCCTCCCTGGCCTCCAGACAGTA  
 CAGACCTCGTGACTCCATCATCAAAGTGGCCAGGGGATGAATGGATGCAAGAGCTTGATGAACCTGTT  
 TGGTAACCCC

**ACGCGT**ACGCGGCCGCTCGAG – GFP Tag – GTTTAA

Protein Sequence: >MG209988 representing NM\_001004176  
 Red=Cloning site Green=Tags(s)

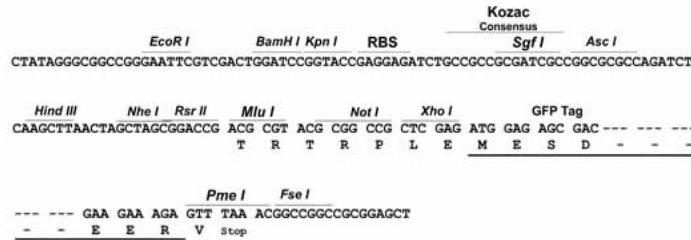
MSPAEQLKQMAAQQQRAKLMQKQKQQQQQQQQQQQQQHSNQTSSWSPLGPPSSPYGTAFASEKP  
 NSPMMYPQAFNNQSTIVPAMANS LQKTTMNNYLP SNHMNMISQQPNNLGTNSLNKQHNILTYGNTKPLTH  
 FNADLSPRMTPPMANPNK TPLMPYIQPPQSSQPPQPPPPPPQLQAPRAHLSAQKRMILLIKQKQ  
 VMNPPMAYAALPAHGQEQHAVGIPRTTGPMQNSVPSGSGSMVSGASPGGLGFLGSPQAAIMKQMLMDQR  
 AQLMEHQKQFLREQRQQQQQQQQQQQQQQQILAEQQLQPHLPRQHLQQQRNPYPVQQVNFQGS  
 QDIAAVRNQVALQSMRASRLIAQNAAGMMGMGPSQNPMTATAAAQSEIGLASYSAPPTSQPGMYNMNTGM  
 TQMLQHSNQSGMGIHPNQSQGPRPPASSQGVGMVSGFGQSM LVNSALSQHQQLKGSVQALPRPQGP  
 LQSVMTVQGAQNWQRSLQGVPRGRTSGELGPFNNGASYPLQAGQPRLTKQHFPPGLSQPVMDANTGAV  
 RTLNPAAMGRQMMPTLAGQQSASQVRPLVMPGLSQGVGMPAFSQPPAQQQIAGGNFAASNQGGAYERTP  
 AQDMSYSYSGEGVGAAPGLPDS TDLVDSIIKSGPGDEWMQELDELFGNP

TRTRPLE - GFP Tag - V

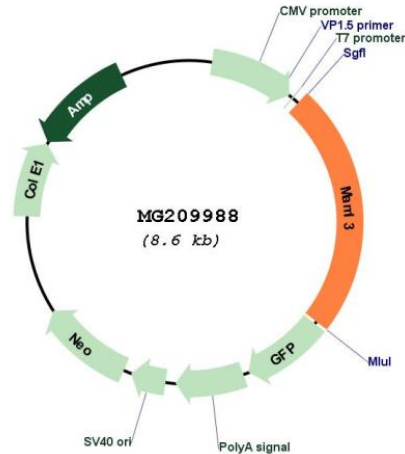
Restriction Sites: SgfI-MluI

Cloning Scheme:

Cloning sites used for ORF Shuttling:



## Plasmid Map:



ACCN: NM\_001004176

ORF Size: 2040 bp

OTI Disclaimer: The molecular sequence of this clone aligns with the gene accession number as a point of reference only. However, individual transcript sequences of the same gene can differ through naturally occurring variations (e.g. polymorphisms), each with its own valid existence. This clone is substantially in agreement with the reference, but a complete review of all prevailing variants is recommended prior to use. [More info](#)

OTI Annotation: This clone was engineered to express the complete ORF with an expression tag. Expression varies depending on the nature of the gene.

Components: The ORF clone is ion-exchange column purified and shipped in a 2D barcoded Matrix tube containing 10ug of transfection-ready, dried plasmid DNA (reconstitute with 100 ul of water).

Reconstitution Method:

1. Centrifuge at 5,000xg for 5min.
2. Carefully open the tube and add 100ul of sterile water to dissolve the DNA.
3. Close the tube and incubate for 10 minutes at room temperature.
4. Briefly vortex the tube and then do a quick spin (less than 5000xg) to concentrate the liquid at the bottom.
5. Store the suspended plasmid at -20°C. The DNA is stable for at least one year from date of shipping when stored at -20°C.

RefSeq: [NM\\_001004176.1](#), [NP\\_001004176.1](#)

RefSeq Size: 6514 bp

RefSeq ORF: 3408 bp  
Locus ID: 433586  
Cytogenetics: 3 C