

Product datasheet for **MG209983**

1200016B10Rik (BC055064) Mouse Tagged ORF Clone

Product data:

Product Type:	Expression Plasmids
Product Name:	1200016B10Rik (BC055064) Mouse Tagged ORF Clone
Tag:	TurboGFP
Symbol:	1200016B10Rik
Synonyms:	1200016B10Rik; C1orf26
Mammalian Cell Selection:	Neomycin
Vector:	pCMV6-AC-GFP (PS100010)
E. coli Selection:	Ampicillin (100 ug/mL)



[View online »](#)

ORF Nucleotide
Sequence:

>MG209983 representing BC055064
Red=Cloning site Blue=ORF Green=Tags(s)

TTTTGTAATACGACTCACTATAGGGCGGCCGGGAATTCGTCGACTGGATCCGGTACCGAGGAGATCTGCC
GCCCGCATCGCC

ATGCTGCTTTGACTACCAAGCTTGAGACTGTTTATGACCATAAGTTTCTAAAGATGTCTA
TCAAAGAATCTTGTGCAAGGAAGAAAAGTCTCAGAAAAACAGACTATCTCTTACCAACTTTTAAATGA
AGACAAGAAAAAGGGAGAAATCTCAGCAGGTTCTACTAGTTCAGAACATGGTGTTCAGCCTGTTTCAACC
AAGAAGAGAAAAGTAAAGCAGATGATACAGACAATGTAGACTATAATGCAAAACAGAAAAACAGTAAAA
GATTGAATGTAGAAGTTTTCATTCTAAAAAGAGACTAAAATTCAGTTCTTCGACCCAAGCGGTATCATA
TTTAAATAATAATCAAATGACTTCACACAGTTGTTTCATCAAATGGAACAAAGATACTAAAGTTAAAGAT
TGTAATTGACAAATATTGGAAGTAAGCTTAATTATGAAATTAACCATAGCCGCATTAATAATACCA
AAGATATGAAATCTAACTGTAGACCAGACAAAGGAAAAGAATTGGCCTTCTTTGCTTATTGAGAAAG
GATGAAAGAACTCAAGAAAGAAAAAATAATAAGACAGTTCTGAAGAATTGGAGAAATGCAAGAAAAAT
CACCTTCTCAGAAATATAATTTAGCAATATGATCAAGGAATCATTGAAATCAGGAAGAAAAGAAATTA
GCTTCAAAATTCAAAAAATCCTCTACTACCTCCAGAAGCTTGTGCAAGAAAAGATCTTTACTATAGA
TTCTAGCAAGTCAAAGAGTAAGCAGGAGGAGAAGCAACACTTGCAAAGTCAACAGATGTCATTAATCTG
GCCAGGCACAAAAGTAAAGTCAATTTTTCAGATTCTACACATAAGCAGTCTGTTTGTGAGAGGATAAGAA
AGGACCTTGTGAGCACAAGGAACGAGTAGTTCGATTTAAGGAAAACCATGCCAGAGTTTGTAAAC
ACCATGTTCTTCAGTGTCTGAGGATACCAAGATGCAGATGAAGAGATGCAGATAGTAGAAGAGCTC
CACGCTGCACGTGTCGGGAGAAGCGTGGATTTGCCTGTGGTCCACCGTCTGTAGAGTCTATGAGCATGG
AGATTGACCTGGTGGATGAGGACGCACATCCCTCTGCTGCACACACTGCCTCAGACACGAAGCTTCTCAT
TGTTATGGACACAAATGTTCTCATGAATCATCTCAAATTCGTTAAAATTTGAAGACGACAGAAATACCA
GGATTTGACACACTTGTGTTAATAATTCCTTGGGTGGTATACAAGAGCTAGATCGTATGAAGGCAGGAA
AATTACTAAAACATGTTTCAGCATAAAGCTGTACCTGCAATTCATTTTATCAACAACAGCCTCAAAAGTCA
AGACAGAAAGCTGTGGGGCCAGTCATTACAGCTGGCATCCAAAAACTTTATGGACTGAGTGACGAGAAC
AATGATGACCGAGTATTAAGTGTCTTTCAGTACCAGCAATTAATCCCGTGTCTCTTGTATTCTGT
GCACGGATGATAGAAATTAAGAACTAAAGGCCTGATAAGTGGTGTGAAGTCCCTCAGTAAAGAAGATCT
GGATACAGAGATATTAATTTAACTCTGAACACAGATTTGTGTCATCAGCCTTGTATTTCTAAGCAGCAG
TTGAACGCAGAAGTACCACCTGCGAAAGAGACTCCTAAGGAAGGAGCTGCAAATCCGGACTGTCCATTC
TACTGGAGCGGATCATTGTGATCTTGAATAATGCCTTGGGACAGCTTTATCTTCAATATTAGAAACAGA
AATGAAAATTGCTTTTGGAAATCTTTGGATGGAGGTGCTGATTTGAAACCACCATGGACTCTAATAAAT
CTATTACAGTGCCTTAAAAACATTGGCTGGCTGTATTTGGATTAGTTATGGAAAATAACTTGTCTGTAA
CTGTTGAGAGCCTATATGAAAATCTCTGTAAAGGTCAAGACAAAAGTGAAGCCAAGTTCTTCAGAAAGCA
CAAGGAG

ACGCGTACGCGGCCGCTCGAG - GFP Tag - GTTTAA

Protein Sequence: >MG209983 representing BC055064
Red=Cloning site Green=Tags(s)

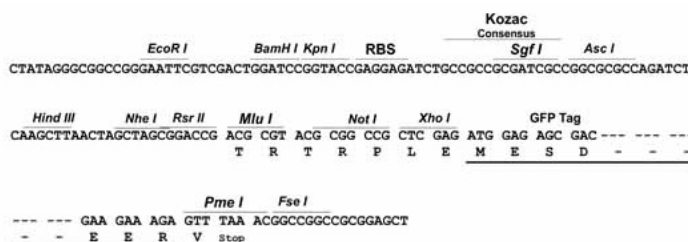
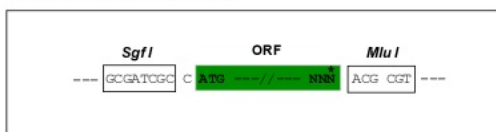
MLLCTTSAHKLETVYDHKFLKMSIKESCAKEEKSQKKQTISSPTFNEDKKKGEISAGSTSSEHGVPVST
 KKRKLKADDDNVDYNANRKNKRLNVEVFIKKRLKFSSTQAVSYLNNQMTSHSCSSNGTKDVKVD
 CKLTNIGSKLNYEIKNHSRIKITKDMKSKPVDQTKENWPSLLIQKKMKELKKEKNNKDSSELEKCKKN
 HLPQNYNFSNMIKESFESGRKKISFKIPKKSSTTLQKLVEEKIFTIDSSKSKSQEELQHLQSHQMSLNL
 ARHKTENSFSDSTHKQSVCEIRKDHCEHQGTSSSDSKENHAQSFETPCSSVSSEDTQDADEEMQIVEEL
 HAARVGRSVDLPVPPSVELMSMEIDLVEDAHPAAAHTASDTKLLIVMDTNVLMNHLKFKVILKTTEIP
 GFDTLVLIIPWVVIQELDRMKAGKLLKHVQHKAVPAIHFINNSLKSQDRKLWGQSLQLASQKLYGLSDEN
 NDDRVLKCLQYQLFPCSLVILCTDDNRLRTKGLISGVKSLSKEDLDEILNLTLNTDLCHQPCISKQQ
 LNAEVPKAKETPKEGAANGLSILLERIICDLEKCLGTALSSILETEMKIAFGNLWMEVLYLKPPWTLIN
 LLQCFKKHVLAVFGLVMENLLVTVESLYENLCKGQDKTEAKFFRKHKE

TRTRPLE - GFP Tag - V

Restriction Sites: SgfI-MluI

Cloning Scheme:

Cloning sites used for ORF Shuttling:



ACCN: BC055064

ORF Size: 2039 bp

OTI Disclaimer: The molecular sequence of this clone aligns with the gene accession number as a point of reference only. However, individual transcript sequences of the same gene can differ through naturally occurring variations (e.g. polymorphisms), each with its own valid existence. This clone is substantially in agreement with the reference, but a complete review of all prevailing variants is recommended prior to use. [More info](#)

OTI Annotation: This clone was engineered to express the complete ORF with an expression tag. Expression varies depending on the nature of the gene.

Components: The ORF clone is ion-exchange column purified and shipped in a 2D barcoded Matrix tube containing 10ug of transfection-ready, dried plasmid DNA (reconstitute with 100 ul of water).

Reconstitution Method:

1. Centrifuge at 5,000xg for 5min.
2. Carefully open the tube and add 100ul of sterile water to dissolve the DNA.
3. Close the tube and incubate for 10 minutes at room temperature.
4. Briefly vortex the tube and then do a quick spin (less than 5000xg) to concentrate the liquid at the bottom.
5. Store the suspended plasmid at -20°C. The DNA is stable for at least one year from date of shipping when stored at -20°C.

RefSeq: [BC055064](#), [AAH55064](#)

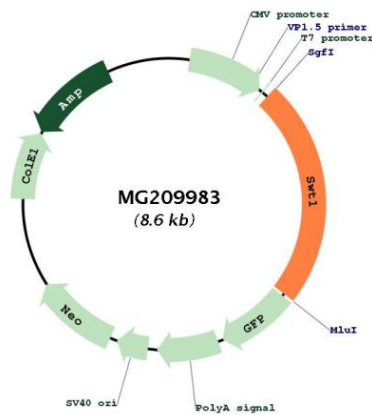
RefSeq Size: 2865 bp

RefSeq ORF: 2039 bp

Locus ID: 66875

Cytogenetics: 1 G1

Product images:



Circular map for MG209983