

Product datasheet for **MG209974**

Gas2l1 (BC031785) Mouse Tagged ORF Clone

Product data:

Product Type:	Expression Plasmids
Product Name:	Gas2l1 (BC031785) Mouse Tagged ORF Clone
Tag:	TurboGFP
Symbol:	Gas2l1
Synonyms:	TU-71.1, GAR22, RP23-64E17.7
Mammalian Cell Selection:	Neomycin
Vector:	pCMV6-AC-GFP (PS100010)
E. coli Selection:	Ampicillin (100 ug/mL)



[View online »](#)

ORF Nucleotide
Sequence:

>MG209974 representing BC031785
Red=Cloning site Blue=ORF Green=Tags(s)

TTTTGTAATACGACTCACTATAGGGCGGCCGGAATTCGTCGACTGGATCCGGTACCGAGGAGATCTGCC
GCCGCGATCGCC

ATGGCGAACCAGTGGCGGCATCGCAGGCTCTGCCGCCAAGAGTGTGCGACCCTCCGATCCAGTGAGG
CCTATGTGGAAGCCATGAAGGAAGACCTGGCCGATTGGCTCAATGCTTTGTACAGTCTAGGTCTCCCGG
CAGTGGCGATGGCTTCTCACGGGCTGGCCACAGGCACAACCCTGTGCCAACATGCCAACGCTGTCACC
GAGGCTGCCCGGCTCTGGCTGCTGCCCGTCCAACCCGAGGTGTGGCTTCCAGGCACACAGTGTGGCGC
CTGGCTCCTTATGGCCGAGACAACGTGGCTCTTTCATCGGCTGGTGGCGGCTGAGCTGGGCGTGCC
TGAAGTGTCTATGTTGAGACAGAGGACCTGGTGTACGCAAGAACGAGAAGAGTGTGGTGTCTGCCTG
CTGGAGGTGCGCCGGCTGGGCGCGCCTTGGCTGCTTGCCCGAGGCTGGTACAGTTCGAGCAGGAGA
TCGAGCGGGAGCTTCGAGCTACCCCTCAGGTTTCCAGCGTCCCTGCTGCTGAAGAGGATGCTACTGAAAT
TGCCACTGTACCAGGGGTTCCACCCGACACCCCGCATGACGCCAATGACCTTCGAAACCTTGATGAG
CTGGTAAGGGAGATCCTAGGCAGGTGCACCTGCCCGACCAAGTTCCCATGATCAAGGTCTCCGAGGGGA
AGTACCGAGTGGGAGACTCCAGCTTGTCTATCTTCGTGAGGGTGTGAGGAGTACGTGATGGTGGCAGT
GGGGGGCGGCTGGGACACACTGGAGCACTACCTAGACAAGCATGACCCTTGTGCTGCTCGTCTTCTACG
CACCGTGTGCCAGCAGAGGACCGGGACTTCTCCCGCAGAGGGGATCACCCACTCTAGCCCCCGCC
CCGGTAGCCAGTCCCTGGGAGTGAAGCGCAGGAGCTCCCGGCCGAAAGTAACCCCATCAGCCTGCGAGG
CACAAAGGAGGGGCTGAGACCCGCTCAGGCCCGGATCAGCTGCCCGCCCTTCCCGCTCCCGCCG
TACTCTGGGACAGTACTCCTCAGCCTCTCTGCTCAGAGCGGCCCATGGGTGCCCGCAGCGACGATT
CAGCCACTGGCTCCCGGAGGGAGCGGCCAGCCACCGCCGACCTCCTGTCTTCCGGCTCCCGGAGACG
GCCGACCGCGCCTCGCAGCCAGTCTCGAGACCGGCTGGACCGGGGACGGCCCGCGTGGCCCCAGGAGGC
CGAGGCGCTCAGCTGTGACCTCCAGCCAGCAAGGCGCACCCGAGCCAGAGCCGCGAGGAACAGGCGG
TACTGATGGTGGCAGGGACCGAGACGGCCAGCACTCGTGGGTGGCCCGGGGAGGGGTGGCGGGGATC
AGGAGGTTCTGGGAGGAGTACCCCGCAGACTCCGCGTGCCTCAGCCCTGCAGCACCCCGGCTTCCAGG
GGCCCCAGCCCCGGCCAGAGCTGGTGGCACACCTGCCAGCATCTTCCGCACGCCCTGCAGCTTGACC
CACAGCAGGAGCAGCAGCTGTTCAAGGCGCTGGAAGAGGAATTCTTAGCCAATGCCCGCCTTGGAGGC
TGCTGCCAGCCATACCCCATGGGATCTGCCCTGACCTCCAGCTCCGACTCTGCTTACTGTTTATCC
AGCTCCTCGTCTTCACTCACTCAGTGTCTGGGTGGCAAATGTGGCCAACCTGGGAGTCAAGCCGCACAG
CCAATGGGCTGCCTGGGCCCCGAGCCAAGCTCTGTCCAGTCTTCCGATGAGGGCAGCCCTACCTTGC
TGTAGGAGGGGCACTGGATGCAACCAGGAGCTTTGGCTGGCCAGAACCCTCACTGACCTGGGCAAGG
GGGCGGATGGACACACAACCAGACCGTAAACCCTCACGCATACCGACACCTCGGGGACCCCGCCGCCAT
CGGGACCCATAGAACTCGGGGCTTGGCATGCCAGCATTCCGTCACCCCAAGGACCGAGCCAGATTCTTC
GATG

ACGCGTACGCGGCCGCTCGAG - GFP Tag - GTTTAA

Protein Sequence: >MG209974 representing BC031785
 Red=Cloning site Green=Tags(s)

MANPVAGIAGSAAKSVRPFSSSEAYVEAMKEDLADWLNALYSGLPGSGDGF LTGLATGTTLCQHNAV T
 EAARALAAARPTRGVAFQAHSVAPGSMARDNVASF IGWCRAELGVPEVLMFETEDLVLRKNEKSVVLC L
 LEVARRGARLGLLAPRLVQFEQEIERELRATPQVSSVPAEEEDVTEIATVPGVPTRTPRMTPNDLRNLDE
 LVREILGRCTCPDQFPMIKVSEGKYRVGDSLLIFVRVLRSHVMVRVGGWDTLEHYLDKHDPCCRSSST
 HRLPQQRTGTFSPQRGSPTSPRPGSPVPGSERSSRPEVTPISLRGTKEGPETPLRPRDQLPPLPRSRR
 YSGDSDSSASSAQSGPMGARSDDSATGSRREPRSHRPTSCLPASRRPTAPRSQSRDRLDRGRPRVAPGG
 RGAQLSTSSPARTRRSQSREEQAVLMVRRDRDQHSWVARGRGGGGSGGSRSTPQTTPRALSPAAPRPSR
 GPSPGPELAATPASIFRTPLQLDPQQEQQLFRRLEEEFLANARALEAAASHTPMGSAPDPPAPDSAYCSS
 SSSSSSLSVLGGKCGQPGEGRGTANGLPGPRSQUALSSSSDEGSPYLAVGGALDATRSSLAGPEPSLTWAR
 GRMDTQPDRKPSRIPTPRGPRRPSGPIELGAWHAQHSVTPRTEPDSSM

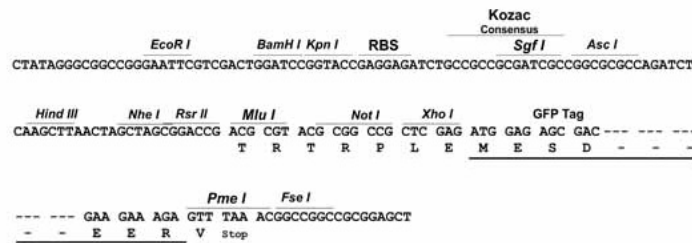
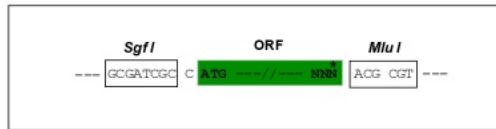
TRTRPLE - GFP Tag - V

Restriction Sites:

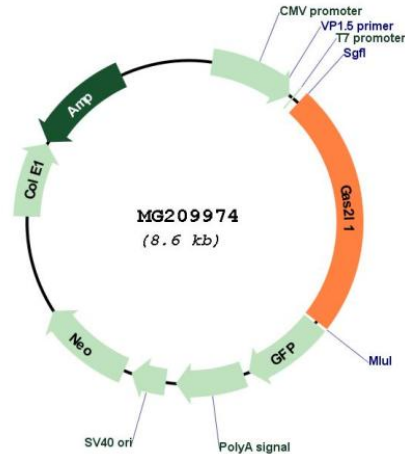
Sgfl-MluI

Cloning Scheme:

Cloning sites used for ORF Shuttling:



Plasmid Map:



ACCN: BC031785

ORF Size: 2036 bp

OTI Disclaimer: The molecular sequence of this clone aligns with the gene accession number as a point of reference only. However, individual transcript sequences of the same gene can differ through naturally occurring variations (e.g. polymorphisms), each with its own valid existence. This clone is substantially in agreement with the reference, but a complete review of all prevailing variants is recommended prior to use. [More info](#)

OTI Annotation: This clone was engineered to express the complete ORF with an expression tag. Expression varies depending on the nature of the gene.

Components: The ORF clone is ion-exchange column purified and shipped in a 2D barcoded Matrix tube containing 10ug of transfection-ready, dried plasmid DNA (reconstitute with 100 ul of water).

Reconstitution Method:

1. Centrifuge at 5,000xg for 5min.
2. Carefully open the tube and add 100ul of sterile water to dissolve the DNA.
3. Close the tube and incubate for 10 minutes at room temperature.
4. Briefly vortex the tube and then do a quick spin (less than 5000xg) to concentrate the liquid at the bottom.
5. Store the suspended plasmid at -20°C. The DNA is stable for at least one year from date of shipping when stored at -20°C.

RefSeq: [BC031785](#), [AAH31785](#)

RefSeq Size: 2561 bp

RefSeq ORF: 2036 bp

Locus ID: 78926

Cytogenetics: 11 A1

Gene Summary: This gene encodes a member of the Gas2 family, actin-associated proteins expressed at high levels in growth-arrested cells. The gene expression is negatively regulated by serum and growth factors. Alternative splicing results in multiple transcript variants. [provided by RefSeq, Jun 2010]