

Product datasheet for **MG209972**

Gnpat (NM_010322) Mouse Tagged ORF Clone

Product data:

Product Type:	Expression Plasmids
Product Name:	Gnpat (NM_010322) Mouse Tagged ORF Clone
Tag:	TurboGFP
Symbol:	Gnpat
Synonyms:	AU019525; D1Ertd819e; DHAPAT
Mammalian Cell Selection:	Neomycin
Vector:	pCMV6-AC-GFP (PS100010)
E. coli Selection:	Ampicillin (100 ug/mL)



[View online »](#)

ORF Nucleotide
Sequence:

>MG209972 representing NM_010322
Red=Cloning site Blue=ORF Green=Tags(s)

TTTTGTAATACGACTCACTATAGGGCGGCCGGAATTCGTCGACTGGATCCGGTACCGAGGAGATCTGCC
GCCGCGATCGCC

ATGGACGTTCTAGCTCCTCCAGCTCCCGATTCTCGGTCGGCTCGGCCAGCCCTAGCAGTGTGCTCCTCT
ATGCGAAAGACCTCAAAAAGTGGGATGAGTTTGAAGATCTGTTAGAGGAGAGGAGACACATCAGTGA
CAAATTTGCAATGAAGTGTACACCCCGCCTTGATAGGGGATCACTCCCTGCAAGCCAGGGGACATC
AAGTCCATTGTCCTCAGTCTGAAGAGATCAACTATGTCATTAAGCAGCTTTCTAGGGAGTCGCTGACAG
GTGTGGATGTCCTCCGAGAGGAAGCCAGTGAATCCTCGAGGAGATGAGCCACAACTGCGCATAGGAGC
CATTGGTTCTTTGCCTTTGTTCTGAGCAAAATCTTTAAACAGATCTTCTCAAAGGTGTGTGTAATGAA
GAAGGCATTCAAAGCTACAACGCGCTGTCCAGGAGCACCTGTGGTCTGCTGCCAGTACCCGAGCT
ACATTGACTTCTCATGTGTCTTCTTCTACAGCTATGACCTGCCTGTGCCAGTATCGCAGCAGG
AATGGACTTCTGGGAATGAGAGTGGTCACTGAGCTGCTCAGGATGTCTGGAGCCTTCTTATGCGACGC
ACTTTTGGAGGAAATAAACTCTACTGGGCGTATTCTCTGAATATGTGAAGACCATGCTGCGGTGTGGTT
ATGCTCCTGTTGAATTTTCTCGAAGGACGAGGAGCCGAGCTGCCAAGACCCTGACTCCTAAGTTTGG
TCTCCTGAATATTGTGATGGAACATTTTTTAAAAGAGAAGTCTTCGATACCTACTTTGTCCCAATTAGC
ATCAGTTATGATAAAATATTGGAAGAGAGTCTTTATGCATATGAGATCCTCGGAGTTCCTAAGCCGAAGG
AGTCCACCAGTGGATTGTTGAAAGCTAGACGGATTCTCTCTGAGAAGTCTTGAAGCATCCATGTGACTT
CGGAGACCCTGTACTGCGTTCTAGCTGCAGGGCGGCTCAATCGGAACACGTATAAAGTGGTGCC
AGATGCATCCCTCAGAAGCAGCTGAGGACGTGCAAGCCTTTGCTACTGAGGTGCGCTATAAGATGCAGC
TTCTGCAGATTGAAAACCTGGCTCTGAGCCCATGGCTCCTGGTGGTCAACATTCTACTTCAAACAGCT
ATCCATGGACTTTGACGCCCTGGTGGAGAAGACTCTGTGGCTGAAGGGCGTAACCCAGGTGTTGCGCGGG
TTCTGCTTTGGCCTGATAACAACTTCTGAGGAAGTGGTCCAGTCCAGCATCCTCCTGCACTCTAACC
TGGCCAGCCTTGTCAAAGACCAGGTGGTCTGAAAATGAACTCTGGAAGCTCACAAGTGGTCAACGGGCT
TGTGCCGAACATATCGCCCTCCTCATGTGCTCTGCCTACAGGAACCAGCTGCTCAACATTTTTGCCCCT
CCTTCTTAGTCGCCCTGGCTTTGCACATGACACCTGGGCTCAGGAAAGAGGATGTCTTCAAGTGTCTTT
CCTTCTCGCAATGTGTTTTAGATGAGTTCATCTTCTCCAGGAAACACACTCAGGGACTTTGAGGA
AGGCTGTACTTGTGTAAAGCTGAGGCTATGCAGATGGCTGGGAAGGACATCATCCTCACAGACAAA
GGGACTGTGTGTACAGTTCCTACAAGCCTTTAAGCCTTTGTGGAATCATATCAGTTACTTTGCA
GATACCTTTGATGAAGAGGACTACTTTGGTGAAGGAATACTTGGTTGCAGCCAGGAAGTTCACCCG
TCAGTCTTGGATCAAGGCTCCTCAGTGTACGATGCGCTGTCTTCTGAACTGCAGAAAAATGCCTTA
GCAGCTTTCGTGAGACTGGGGTGGTGGAAAAGAAGATAGATAGTAAGTATGTGATATATGTGAACG
GGCCTGCCACAAGCAAGTTAGAAGAAATGCTCGGATGTAAGAAGCCAATAGGAAAACCAGCCACTGCAAA
ACTA

ACGCGTACGCGGCCGCTCGAG - GFP Tag - GTTTAA

Protein Sequence: >MG209972 representing NM_010322
 Red=Cloning site Green=Tags(s)

MDVPSSSSSRFSVGSASPSSVLLYAKDLKKWDEFEDLLEERRHISDFKFAMKCYTPPLYRGITPCKPGDI
 KSIVLSSEEINYVIKQLSRESL TGVDVLRREEASEILEEMSHKLRI GAIRFFAFVLSKIFKQIFSKVCVNE
 EGIQKLQRAVQEHVPVLLPSHRSYIDFLMLSFILYSYDLPVPIAAGMDFLGMRVYSELLRMSGAFFMRR
 TFGGNKLYWAVFSEYVKTMLRCGYAPVEFFLEGTRSRRAKTLTPKFGLLNIVMEPFFKREVFDTYFVPIS
 ISYDKILEESLYAYEILGVPKPESTTGLLKARRILSENFSGIHVYFGDPVSLRSLAAGRLNRNTYNLVP
 RCIPQKQPEDVQAFVTEVAYKMQLLQIENLALSPWLLVVTILLQNQLSMDFDALVEKTLWLKGVTVQVFGG
 FLLWPDNKLPEEVVQSSILLHSNLASLVKDQVVLKMNSGSSQVVNGLVPEHIALLMCSAYRNQLLNIFAR
 PSLVALALHMTPLGRKEDVFSFSLRNVSDEFIFLPGNTRDFEEGCYLLCKAEAMQMAGKDIILTDK
 GTAVLQFLTSLFKPFVSYQLLCRYLLHEEDYFGEKEYLVAARKFTRQLLDQSSQCYDALSSELQKNAL
 AAFVRLGVVEKKKIDSKYVVYVNGPATSKLEMLGCKKPIGKPATAKL

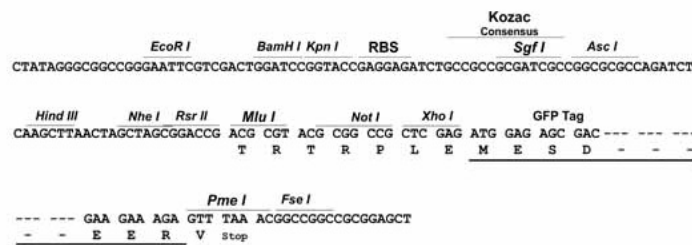
TRTRPLE - GFP Tag - V

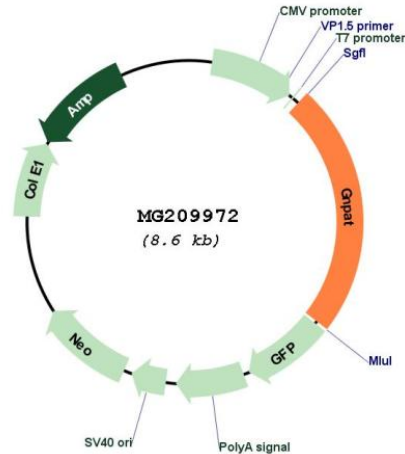
Restriction Sites:

Sgfl-MluI

Cloning Scheme:

Cloning sites used for ORF Shuttling:



Plasmid Map:


ACCN: NM_010322

ORF Size: 2034 bp

OTI Disclaimer: The molecular sequence of this clone aligns with the gene accession number as a point of reference only. However, individual transcript sequences of the same gene can differ through naturally occurring variations (e.g. polymorphisms), each with its own valid existence. This clone is substantially in agreement with the reference, but a complete review of all prevailing variants is recommended prior to use. [More info](#)

OTI Annotation: This clone was engineered to express the complete ORF with an expression tag. Expression varies depending on the nature of the gene.

Components: The ORF clone is ion-exchange column purified and shipped in a 2D barcoded Matrix tube containing 10ug of transfection-ready, dried plasmid DNA (reconstitute with 100 ul of water).

Reconstitution Method:

1. Centrifuge at 5,000xg for 5min.
2. Carefully open the tube and add 100ul of sterile water to dissolve the DNA.
3. Close the tube and incubate for 10 minutes at room temperature.
4. Briefly vortex the tube and then do a quick spin (less than 5000xg) to concentrate the liquid at the bottom.
5. Store the suspended plasmid at -20°C. The DNA is stable for at least one year from date of shipping when stored at -20°C.

RefSeq: [NM_010322.2](#), [NP_034452.2](#)

RefSeq Size: 2959 bp

RefSeq ORF: 2037 bp
Locus ID: 14712
UniProt ID: [P98192](#)
Cytogenetics: 8 72.81 cM
Gene Summary: Dihydroxyacetonephosphate acyltransferase involved in plasmalogen biosynthesis.
[UniProtKB/Swiss-Prot Function]