

Product datasheet for **MG209967**

Chgb (NM_007694) Mouse Tagged ORF Clone

Product data:

Product Type:	Expression Plasmids
Product Name:	Chgb (NM_007694) Mouse Tagged ORF Clone
Tag:	TurboGFP
Symbol:	Chgb
Synonyms:	Scg-1
Mammalian Cell Selection:	Neomycin
Vector:	pCMV6-AC-GFP (PS100010)
E. coli Selection:	Ampicillin (100 ug/mL)



[View online »](#)

ORF Nucleotide Sequence:

>MG209967 representing NM_007694
 Red=Cloning site Blue=ORF Green=Tags(s)

TTTTGTAATACGACTCACTATAGGGCGGCCGGAATTCGTCGACTGGATCCGGTACCGAGGAGATCTGCC
 GCC**CGCATCGCC**

ATGCAGCCGGCTATGCTCCTCGGCCTCCTGGGCGCAGCGGCTCTGGCCGCTGTCAGCTCAGCTCCAGTGG
 ATAACAGGGATCACAATGAAGAAATGGTACTCGCTGCATTATCGAAGTCCTCTCAAATGCCCTATCCAA
 GTCAGTGTTC AACGATCACCCCTGAGTGCCGCAAGTCCTGAAGAAGAGTGAAAAAGAGGTCAAAGGT
 GAAGAGAAAGGTGAAAACCAAGAAGCTCGAAGTTTGAAGTACGGTTGCTAAGAGACCCAGCCGATGCCTCAG
 GAACCCGCTGGGCTCCAGTAGGGAGGATGCAGGCGCTCCAGTAGAAGACTCTCAAGGCCAGACGAAGGT
 AGGCAATGAGAAGTGGACAGAAGGAGGAGGACACAGCCGAGAGGGAGTGGATGATCAAGAGAGTCTCCGT
 CCCTCAAACCAACAGCGTCAAAGAAGCAAAGATATACCATTGGAAGAGAGGGTGGGAAAAGAGAGGG
 AGAAAGAAGAAGCAAGATTTACCCAATGGGGAGCACAGGGAAGATGCTGGTGAAGAGAAGAAACACAT
 TGAAGATTCTGGAGAGAAGCCGAACACCTTCTCCAACAAAAGAAGCGAGGCTTCCGTAAGAAAAAGAT
 GAGTCAGTGGCCAGAGCAGATGCACACTCCATGGAGCTGGAGGAGAAGACACACAGTAGGGAGCAAAGCA
 GCCAGGAGAGTGGAGAGGAGACAAGGAGGCAGGAGAAACCCAGGAGCTTACCGACCAGGACCAGAGCCA
 GGAAGAATCCCAGGAAGGCGAGGAAGGTGAGGAAGGCGAGGAAGGCGAGGAAGGCCAGGAAGACTCAGCC
 TCTGAAGTAACCAACGCAGGCCAGACACCACCGGAGAGCGGGTCCAACAAGTCTCTTACGAAG
 GGCATCTCTATCTGAGGAAAGGAGACCCTCTCCAAGGAGTCCAAGGAGGCAGATGTGGCCACAGTCCG
 TTTAGGGGAAAAAGGAGTACCATCTAGCTACTACAGGGCTTCAAGAAGAAGCTGAATATGGGGAA
 GAATCGAGAAGCTATCGGGGACTACAGTACCGGGTAGAGGAAGCGAAGAGGACAGAGCCCAAGGCCTC
 GGAGTGAGGAGAGTCAGGAAAGGGAGTATAAGAGAAACCAACCCGACTCTGAAGTGGAAAGCACAGCAAA
 CAGACATGGTGAAGAAACCGAGGAAGAGAGGAGCTACGAGGGGGCAATGGACGCCAACACAGAGGCAGG
 GGGCGGGAGCCAGGAGCCATTCTGCTCTTGACACCAGAGAAGAAAAAGGCTCTTGATGAAGGGCACT
 ACCCTGTTGCGAAAGCCCAATAGATACGGCAAAAAGGTACCCACAAAGCAAATGGCAAGAGCAGGAGAA
 AAAGTACCTCAACTATGGCGAGGAAGGGGACCAAGGGAGATGGTGGCAGCAGGAAGAGCAGCTAGGACCG
 GAAGAAAGCAGGGAGGAAGTAAAGTTTCCAGACAGACAATATGAGCCCTATCCCATCACTGAAAAGAGGA
 AGAGGTTAGGGGCGCTGTTCAACCCGACTTTGACCCCTCCAGTGAAGAATAGTGACTTTGAGAAAAG
 AGGCAACCCAGATGACAGTTTTCTTGGAGTGAAGGTGAAGACAGAAATGGGGTACCTTGACTGAGAAG
 AATTCCTTCCCAGAGTAACTATGACTGGTGGGAGAGAAGGCCCTTCTCAGAGGATGTGAATTGGGGAT
 ATGAGAAGAGAAGCTTTGCCAGGGCCCTCAGCTCGACTTGAAACGGCAATATGATGGAGTGGCCGAGTT
 GGACCAGCTGTTCACTACAGGAAGAAGGCAGACGAATTTCCCGATTTCTACGACTCGGAGGAGCAGATG
 GGGCTCACAGGAGGCAACGATGAAAAGGCCAGGGCTGACCAGAGAGTTCTGACGGCGGAAGAGAAAA
 AGGAACTGGAGAAGTGGCTGCGATGGATCTGAACTCCAGAAGATAGCGGAAAAGTTACGCCAGCGGGG
 C

ACGCGTACGCGGGCCGCTCGAG – GFP Tag – GTTTAA

Protein Sequence: >MG209967 representing NM_007694
 Red=Cloning site Green=Tags(s)

MQPAMLLGLLGAAALAAVSSAPVDNRDHNEEMVTRCIIIEVLSNALSKSSVPTITPECRQVLKKSQKEVKG
 EEKGENQNSKFEVRLLRDPADASGTRWASSREDAGAPVEDSQGQTKVGNKWTGEGGHSREGVDDQESLR
 PSNQQASKEAKIYHSEERVGKERKEEGKIYPMGEHREDAGEEKKHIEDSGEKPNTFSNKRSEASAKKDD
 ESVARADAHSMEELEEKTHSREQSSQESGEETRRQEKPELTDQDQSQEESQEGEEGEEGEEGEEEDSA
 SEVTKRRRPRHHHGRSGSNKSSYEGHPLSEERRPSPKESKEADVATVRLGKCRSHHLAHRASEEPEYGE
 ESRSYRGLQYRGRGSEEDRAPRPRSEESQEREYKRNPDPSELESTANRHGEEETEERSYEGANGRQHRGR
 GREPGAHSALDTREERKLLDEGHYPVRESPIDTAKRYPQSKWQEQEKNYLNYGEEGDQGRWWQEEQLGP
 EESREEVRFDPDRQYEPYPI TEKRKRLGALFNPFYDPLQWKNDFEKRGNPDDSFLEDEGEDRNGVTLTEK
 NSFPEYNDWERRPFSEVDNNGYEKRSFARAPQLDLKRQYDGAELDQLLHYRKKADEFPDFYDSEEQM
 GPHQEANDEKARADQRLTAEEKKELENLAAMDLELQKIAEKFSQRG

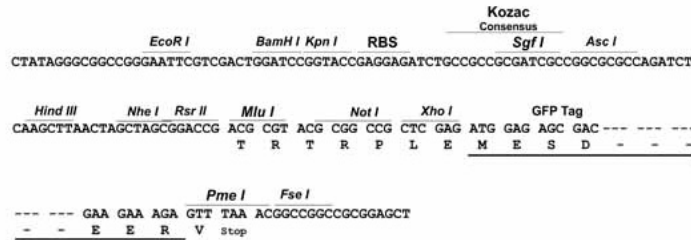
TRTRPLE - GFP Tag - V

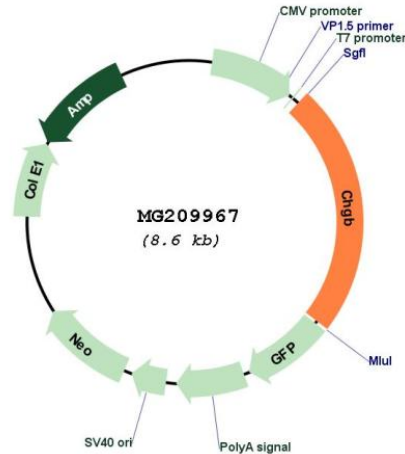
Restriction Sites:

Sgfl-MluI

Cloning Scheme:

Cloning sites used for ORF Shuttling:



Plasmid Map:


ACCN: NM_007694

ORF Size: 2031 bp

OTI Disclaimer: The molecular sequence of this clone aligns with the gene accession number as a point of reference only. However, individual transcript sequences of the same gene can differ through naturally occurring variations (e.g. polymorphisms), each with its own valid existence. This clone is substantially in agreement with the reference, but a complete review of all prevailing variants is recommended prior to use. [More info](#)

OTI Annotation: This clone was engineered to express the complete ORF with an expression tag. Expression varies depending on the nature of the gene.

Components: The ORF clone is ion-exchange column purified and shipped in a 2D barcoded Matrix tube containing 10ug of transfection-ready, dried plasmid DNA (reconstitute with 100 ul of water).

Reconstitution Method:

1. Centrifuge at 5,000xg for 5min.
2. Carefully open the tube and add 100ul of sterile water to dissolve the DNA.
3. Close the tube and incubate for 10 minutes at room temperature.
4. Briefly vortex the tube and then do a quick spin (less than 5000xg) to concentrate the liquid at the bottom.
5. Store the suspended plasmid at -20°C. The DNA is stable for at least one year from date of shipping when stored at -20°C.

RefSeq: [NM_007694.5](#)

RefSeq Size: 2733 bp

RefSeq ORF: 2034 bp

Locus ID: 12653

UniProt ID: [P16014](#)

Cytogenetics: 2 64.74 cM

Gene Summary: Secretogranin-1 is a neuroendocrine secretory granule protein, which may be the precursor for other biologically active peptides.[UniProtKB/Swiss-Prot Function]