

## Product datasheet for **MG209953**

### **Pelp1 (BC016444) Mouse Tagged ORF Clone**

#### **Product data:**

Product Type:	Expression Plasmids
Product Name:	Pelp1 (BC016444) Mouse Tagged ORF Clone
Tag:	TurboGFP
Symbol:	Pelp1
Synonyms:	RP23-42P20.4
Mammalian Cell Selection:	Neomycin
Vector:	pCMV6-AC-GFP (PS100010)
E. coli Selection:	Ampicillin (100 ug/mL)



[View online »](#)

ORF Nucleotide  
Sequence:

>MG209953 representing BC016444  
Red=Cloning site Blue=ORF Green=Tags(s)

TTTTGTAATACGACTCACTATAGGGCGGCCGGGAATTCGTCGACTGGATCCGGTACCGAGGAGATCTGCC  
GCCCGCATCGCC

ATGCTTCAGGGAGGAGCCTCTGGAGAAGCCTTGCTCACCCACCTGCTCAGTGACATCTCCCCTCCAGCTG  
ATGCTCTTAAGCTATGCAGTACCAGGGGAAGCTCTGATGGAGGTTTGCAAAGTGGGAAGCCAAGTCTCC  
TAAGAAGCTCAAGCTCGATATGGGGGAAGCTTTGGCTCCACCCAGCCAAAAGGAAAGGAGATAGGAATGCC  
AACAGTGACGTGTGCGCAGCTGCACTGAGAGGCCTCAGTCGGACCATCCTTATGTGCGGGCCTCTCATCA  
AGGAGGAGACTCACAGGAGACTTCATGATCTAGTCCTGCCCTGGTCATGAGTGTCCAGCAGGGTGAGGT  
CCCGGGCAGCTCTCCTTACAACAGTTCTGCTGTCGCCTCGGGCTCTACCGCCTGCTGCTGGCTTTATTG  
CTGGCACCTTCCCCTCGGTGCCCTCCTCCTTTGCTGTGCCCTGAAAGCTTTCTCTTTGGCCAATGGG  
AAGATAGTCTTGAGGTCTCCTCTTTTTGCTCAGAAGCTCTGGTGACCTGTGCTGCTGACACACCCCCG  
AGTACCTCCTCTACAGAGCTCAGGCCCTGCCTGCCCCACTCCTGCCCCCTGCCCTCCTCCTGAGGCCCA  
TCTTCATTACAGGCCCGGCCCTTCCATCCTCCAGGCCCATGCCCTCCATAGGTGCTGTGCCATCCACAG  
GCCATTACCCTCAGCAGGCCCATCCACAGTAGGCTCTATGGCGTCCACAGGCCAAGTGCCCTCTCG  
CCCTGGACCTCCAGCAACAGCCAACATTTAGGCCTCTGTGCCAGGCCTGGTATCTGTTCCACCCAGG  
CTCCTTCTGGCCCTGAAAACACCGTGCAGGCTCCGGTGAGGATCCTGTCTTGTCTCTAGTGGGACCC  
CTCCGCCTAGCATACCTCCAGATGAAACTTTTGGGGGAGAGTACCTAGGCCAGCCTTTGTCCACTACGA  
TAAGGAGGAGGCATCTGATGTAGAGATCCTTGGAAAGCGACTCTGATGACAGTGTGGTATTGTACCT  
GAGGGGCTTCCCTCCCTGCCACCTGCACCACCTCAGGCACTCTCCCTGCGGCTCCTGCCGGCCAC  
CAACAGCCTCACCTCCTGTGCCAGCTAAGGAGGATTCTGAAGAAGTGCCTGCAACCCAGGGCCTCCACC  
CCACCCCCACCCCAACCCCAACCGGCCTCTGGTCTGTGACACTTCTCCACCCAGCTGGTCCCTGAA  
GGGACTCCTGGAGGGGAGGACCCACAGCCATGGAAGAAGATTTGACAGTTATTAATATCAACAGCAGTG  
ATGAAGAGGAGGAGGAGGAAGAGGAAGAGGAGGAAGAAGATGAAGATGAGGAAGAAGAAGACTTTGAGGA  
AGAGGAAGAAGATGAAGAAGAATATTTTGAAGAGGAAGAAGAGGAAGAAGAGTTTGAAGGAGGAAATTTGAG  
GAGGAAGAAGGTGAATTAGAAGAGGAAGAAGAAGAGGAGGAAGAAGAGTTAGATGAGGTAGAAGATGTGG  
AGTTTGGTTCAGCAGGGGAGGTGGAAGAAGGTGGACCTCCACCCCAACACTGCCACCTGCTCTGCCACC  
TTCAGACTCGCCAAAGTACAGCCTGAGGCAGAACCTGAACCTGGGCTCTTATTGGAAGTTGAGGAGCCA  
GGCCAGAGGAGGTGCCTGGGCCTGAGACTGCTCTACCTGGCCCTGAAGTGTCCCCTCCCAGGAGG  
AGGGGGAGCAGGAAGTGGGAAGCCCTGCAGCAGGGCCACCTCAGGAGCTTGTGAAGAGTCTCTGCTCC  
CCCTGCCCTGCTGGAAGAGGGGACTGAGGTGGAGGTGACAAAAGTGCCACCCCAACCGGAGACCTGCA  
GAAGAAATGGAGACAGAAGCAGAAGTCCAGCTCCTCAGGAAAAGGAGCAAGATGATACAGCTGCCATGC  
TGCTGATTTTCATCGATTGTCCCCTGACGATGAGAAGCCACCACCTGCTACAGAGCCTGACTCG

ACCGGTACGCGGGCCGCTCGAG – GFP Tag – GTTTAA

**Protein Sequence:** >MG209953 representing BC016444  
 Red=Cloning site Green=Tags(s)

MLQGGASGEALLTHLLSDISPPADALKLCSTRGSSDGGGLQSGKPSAPKCLKLDMGEALAPPSQRKGD  
 NSDVCAALRGLSRTILMCGPLIKEETHRRLHDLVPLVMSVQQGEVPGSSPYNSSCRLGLYRLLALL  
 LAPSPRCPPPLACALKAFSLGQWEDSLEVSSFCSEALVTCAALTHPRVPLQSSGPACPTAPVPPPPEAP  
 SSFRAPAFHPPGMPPSIGAVPSTGPLPSAGPIPTVGSMASTGQVPSRPGPPATANHLGLSVPGLVSVPPR  
 LLPGPENHRAGSGEDPVLAPSGTPPPSIPPDETFGGRVPRPAFVHYDKEEASDVEISLESDDSVVIVP  
 EGLPSLPPAPPSGTPPPAAPAGPPTASPPVPAKEDSEELPATPGPPPPPPPPPPASGPVTLPPPQLVPE  
 GTPGGGGPTAMEEDLTVININSSDEEEEEEEEEEEDEEEEEDEEEEEDEEEYEEEEEEEEEEEEFE  
 EEEGELEEEEEEEEEELDEVEDVEFGSAGEVEEGPPPPTLPPALPPSDSPKVQPEAEPEGLLLEVEEP  
 GPPEVPGPETAPTLAPEVLPSEQEEGEQEVGSPAAGPPQELVESSAPPALLEEGTEGGDKVPPPPETPA  
 EEMETA EVPAPQEKEQDDTAAMLADFIDCPPDDEKPPPAT EPDS

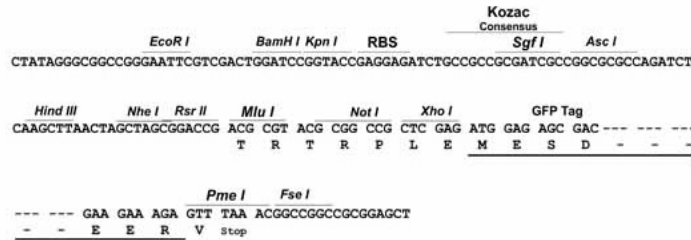
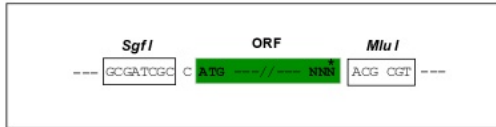
TRTRPLE - GFP Tag - V

**Restriction Sites:**

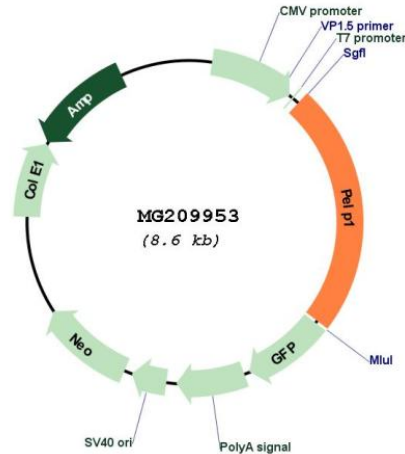
Sgfl-MluI

**Cloning Scheme:**

Cloning sites used for ORF Shuttling:



Plasmid Map:



ACCN: BC016444

ORF Size: 2027 bp

OTI Disclaimer: The molecular sequence of this clone aligns with the gene accession number as a point of reference only. However, individual transcript sequences of the same gene can differ through naturally occurring variations (e.g. polymorphisms), each with its own valid existence. This clone is substantially in agreement with the reference, but a complete review of all prevailing variants is recommended prior to use. [More info](#)

OTI Annotation: This clone was engineered to express the complete ORF with an expression tag. Expression varies depending on the nature of the gene.

Components: The ORF clone is ion-exchange column purified and shipped in a 2D barcoded Matrix tube containing 10ug of transfection-ready, dried plasmid DNA (reconstitute with 100 ul of water).

Reconstitution Method:

1. Centrifuge at 5,000xg for 5min.
2. Carefully open the tube and add 100ul of sterile water to dissolve the DNA.
3. Close the tube and incubate for 10 minutes at room temperature.
4. Briefly vortex the tube and then do a quick spin (less than 5000xg) to concentrate the liquid at the bottom.
5. Store the suspended plasmid at -20°C. The DNA is stable for at least one year from date of shipping when stored at -20°C.

RefSeq: [BC016444](#), [AAH16444](#)

RefSeq Size: 2272 bp

RefSeq ORF: 2027 bp

Locus ID: 75273

Cytogenetics: 11 B3

**Gene Summary:** Coactivator of estrogen receptor-mediated transcription and a corepressor of other nuclear hormone receptors and sequence-specific transcription factors. Plays a role in estrogen receptor (ER) genomic activity when present in the nuclear compartment by activating the ER target genes in a hormonal stimulation dependent manner. Can facilitate ER non-genomic signaling via SRC and PI3K interaction in the cytosol. Plays a role in E2-mediated cell cycle progression by interacting with RB1. May have important functional implications in ER/growth factor cross-talk. Interacts with several growth factor signaling components including EGFR and HRS. Involved in nuclear receptor signaling via its interaction with AR and NR3C1. May promote tumorigenesis via its interaction with and modulation of several oncogenes including SRC, PI3K, STAT3 and EGFR. Plays a role in cancer cell metastasis via its ability to modulate E2-mediated cytoskeleton changes and cell migration via its interaction with SRC and PI3K (By similarity). Functions as the key stabilizing component of the Five Friends of Methylated CHTOP (5FMC) complex; the 5FMC complex is recruited to ZNF148 by methylated CHTOP, leading to desumoylation of ZNF148 and subsequent transactivation of ZNF148 target genes (PubMed:22872859). Component of the PELP1 complex involved in the nucleolar steps of 28S rRNA maturation and the subsequent nucleoplasmic transit of the pre-60S ribosomal subunit. Regulates pre-60S association of the critical remodeling factor MDN1 (By similarity). [UniProtKB/Swiss-Prot Function]