

Product datasheet for **MG209937**

Gas6 (NM_019521) Mouse Tagged ORF Clone

Product data:

Product Type:	Expression Plasmids
Product Name:	Gas6 (NM_019521) Mouse Tagged ORF Clone
Tag:	TurboGFP
Symbol:	Gas6
Synonyms:	Gas-6
Mammalian Cell Selection:	Neomycin
Vector:	pCMV6-AC-GFP (PS100010)
E. coli Selection:	Ampicillin (100 ug/mL)



[View online »](#)

ORF Nucleotide
Sequence:

>MG209937 representing NM_019521
Red=Cloning site Blue=ORF Green=Tags(s)

TTTTGTAATACGACTCACTATAGGGCGGCCGGGAATTCGTCGACTGGATCCGGTACCGAGGAGATCTGCC
GCCGCGATCGCC

ATGCCCCACCGCCCGGCCCGCCGCCCTGGGCACTGCGCTTCTGCTGCTCCTGCTGGCTTCCGAGT
CTTCTCACAACGTGCTGTTGCGGGCGCGTGAGGCGGCGCAGTTTCTGCGGCCAGGCAGCGCCGCGCCTA
CCAAGTCTTCGAGGAGGCCAAGCAGGGCCACCTGGAACGGGAGTGCCTGGAGGAGGTGTGCAGCAAAGAG
GAGGCCAGAGAGGTGTTGAGAACGACCCCGAGACGGAGTATTTCTATCCACGATATCAAGAGTGCATGA
GAAAATATGGCAGGCCTGAAGAAAAAACCAGATTTGCGCAAATGTGTTGAGAAGTTCCTGACCAAGT
CACCCCAAACCTTGTGATAAGAAGGTAATCATATCTGCCAAGACCTCATGGGCAACTTCTTCTGCGTG
TGCACAGATGGCTGGGGAGGCCGCTCTGTGACAAAGATGTCAATGAGTGTGTCCAGAAGAATGGGGCT
GCAGCCAGGTCTGCCACAACAAACCAGGAAGCTTCCAATGTGCCTGCCATAGTGGCTTCTCGCTTGCATC
AGACGGCCAGACCTGCCAAGATATCGATGAATGCACAGACTCAGACACCTGTGGGACGCGCGATGCAAG
AACTTGCCAGGCTCCTACTCTTGCTCTGCGATGAGGGATATACATACAGCTCCAAGGAGAAGACCTGCC
AAGATGTGGACGAGTGCCAGCAGGATCGCTGTGAGCAGACCTGTGTCAACTCCCCAGGCAGCTATACCTG
CCTGTGATGGGCGAGGGGGCCTAAAACATATCCCAGACATGGATACTTGTGAGGACATCTTACCATGT
GTGCCCTTACGATGGCCAAGAGCGTGAAGTCTTGTACCTGGGCGCATGTTACGCGGGACCCCGTGTA
TTAGACTACGCTTCAAGAGGCTTACGCTACCAGGCTGCTGGCTGAATTTGACTTCCGCACTTTTGACCC
TGAAGGAGTCTCTTCTCGCTGGAGGCCGTTACAGACAGCACCTGGATTGCTGGGCTAAGAGCTGGG
CGGCTTGAGCTGCAGCTTCGGTACAATGGCGTTGGGCGCATCACCAGCAGCGGGCCAACCATCAACCAGC
GCATGTGGCAAACATATCTCCGTGGAAGAGCTGGAACGTAACCTTGTCAAGGTCAACAAGATGCTGT
AATGAAGATCGCGTAGCTGGGGAGCTGTTTCAGCTGGAGAGGGGCTCTATCACCTGAATCTCACCGTG
GGCGGCATTCCCTTCAAGGAGAGTGAGCTCGTCCAGCCGATTAACCCTCGCTGGATGGGTGCATGAGGA
GTTGAACTGGCTGAACGGGGAAGACAGCGCCATCCAGGAGACAGTCAAGGCAAACAAAAATGCAGTG
CTTCTCTGTGACAGAAAGGGCTCCTTCTCCCGGGGAATGGATTTGCTACCTACAGGCTCAACTACACC
CGAACATCGTGGATGTCGGCACGGAACACCTGGGAAGTTAAAGTTGTGGCTCGGATCCGCCCTGCCA
CGGACACGGGGTGTGCTGGCGCTGGTGGGGACGACGATGTCGTCCCCATCTGTGGCCCTAGTCGA
CTACCACTCTACAAAGAAGCTCAAGAAGCAGTTGGTGGTCTGGCAGTTGAGGATGTTGCCCTGGCACTG
ATGGAATCAAGGTGTGCGACAGCCAGGAACACACGGTCACTGTCTCCCTGCGGGAGGGTGAGGCCACCC
TAGAAGTGGATGGCACAAGGGCCAGAGTGAAGTGAGCACTGCCAGCTGCAGGAGCGACTGGACACACT
TAAGACACATCTGCAAGGCTCTGTGCACACCTATGTTGGAGGCCTGCCAGAAGTATCGGTGATTTCTGCA
CCCCTACTGCGTTCTACCGCGGATGCATGACTCTGGAGGTAACGGGAAAATCCTGGACCTGGATACGG
CCTCGTACAAGCACAGTGACATCACCTCCCACTCTGCCCGCTGTGGAGCATGCCACCC

ACGCGTACGCGGGCCGCTCGAG - GFP Tag - GTTTAA

Protein Sequence: >MG209937 representing NM_019521
 Red=Cloning site Green=Tags(s)

MPPPPGPAALGTALLLLLLASESSHTVLLRAREAAQFLRPRQRRAYQVFEEAKQGHLEECVVEVCSKE
 EAREVFENDPETEYFYPRYQECMRKYGRPEEKNPDKFAKCVQNLPDQCTPNPCDKKGTHICQDLMGNFFCV
 CTDGWGGRLCDKDVNECVQKNGGCSQVCHNKPGSFQCACHSGFSLASDGQTCQDIDECTDSDTCGDARCK
 NLPGSYSCLCDEGYTYSSKEKTCQDVDECQQRCEQTCVNSPGSYTCHCDGRGGLKLSPDMDTCEDILPC
 VPFMAKSVKSLYLGRMFSGTPVIRLRFKRLQPTRLLAEFDFRTFDPEGVLFAGGRSDSTWIVLGLRAG
 RLELQLRYNGVGRITSSGPTINHGMWQTIISVEELERNLVIKVNKDAVMKIAVAGELFQLERGLYHLNLT
 VGGIPFKESELVQPINRDLGCMRSWNWLNVEDSAIQETVKANTKMQCFVTERGSFFPGNGFATYRLNYT
 RTSLDVGTETTWEVKVVARIRPATDTGVLLALVGDDVVPISVALVDYHSTKLLKQLVVLAVEDVALAL
 MEIKVCDSEHTVTVSLREGEATLEVDGKQSEVSTAQLQERLDTLKTHLQGSVHTYVGGLEPVSVISA
 PVTAFYRGCMTLEVNGKILDLDTASYKHSIDITSHSCPPVEHATP

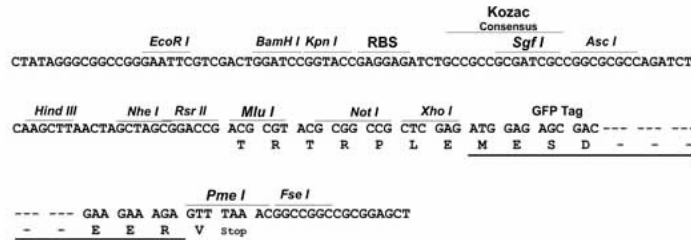
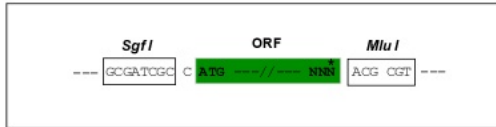
TRTRPLE - GFP Tag - V

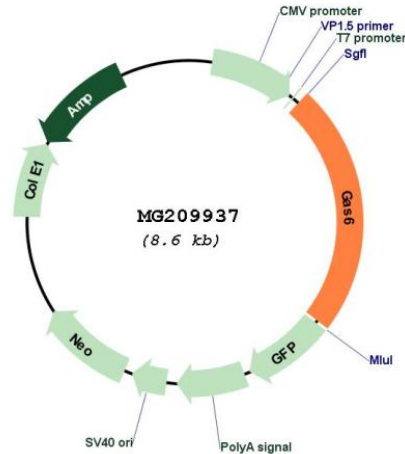
Restriction Sites:

Sgfl-MluI

Cloning Scheme:

Cloning sites used for ORF Shuttling:



Plasmid Map:


ACCN: NM_019521

ORF Size: 2019 bp

OTI Disclaimer: The molecular sequence of this clone aligns with the gene accession number as a point of reference only. However, individual transcript sequences of the same gene can differ through naturally occurring variations (e.g. polymorphisms), each with its own valid existence. This clone is substantially in agreement with the reference, but a complete review of all prevailing variants is recommended prior to use. [More info](#)

OTI Annotation: This clone was engineered to express the complete ORF with an expression tag. Expression varies depending on the nature of the gene.

Components: The ORF clone is ion-exchange column purified and shipped in a 2D barcoded Matrix tube containing 10ug of transfection-ready, dried plasmid DNA (reconstitute with 100 ul of water).

Reconstitution Method:

1. Centrifuge at 5,000xg for 5min.
2. Carefully open the tube and add 100ul of sterile water to dissolve the DNA.
3. Close the tube and incubate for 10 minutes at room temperature.
4. Briefly vortex the tube and then do a quick spin (less than 5000xg) to concentrate the liquid at the bottom.
5. Store the suspended plasmid at -20°C. The DNA is stable for at least one year from date of shipping when stored at -20°C.

RefSeq: [NM_019521.2](#)

RefSeq Size: 2573 bp

RefSeq ORF: 2025 bp

Locus ID: 14456

UniProt ID: [Q61592](#)

Cytogenetics: 8 6.06 cM

Gene Summary: Ligand for tyrosine-protein kinase receptors AXL, TYRO3 and MER whose signaling is implicated in cell growth and survival, cell adhesion and cell migration. GAS6/AXL signaling plays a role in various processes such as endothelial cell survival during acidification by preventing apoptosis, optimal cytokine signaling during human natural killer cell development, hepatic regeneration, gonadotropin-releasing hormone neuron survival and migration, platelet activation, or regulation of thrombotic responses.[UniProtKB/Swiss-Prot Function]