

Product datasheet for **MG209926**

Spg20 (NM_144895) Mouse Tagged ORF Clone

Product data:

| | |
|---------------------------|---|
| Product Type: | Expression Plasmids |
| Product Name: | Spg20 (NM_144895) Mouse Tagged ORF Clone |
| Tag: | TurboGFP |
| Symbol: | Spg20 |
| Synonyms: | AI840044; C79168; mKIAA0610; SPARTIN; TAHCCP1 |
| Mammalian Cell Selection: | Neomycin |
| Vector: | pCMV6-AC-GFP (PS100010) |
| E. coli Selection: | Ampicillin (100 ug/mL) |



[View online »](#)

ORF Nucleotide
Sequence:

>MG209926 representing NM_144895
 Red=Cloning site Blue=ORF Green=Tags(s)

TTTTGTAATACGACTCACTATAGGGCGGCCGGGAATTCGTGCGACTGGATCCGGTACCGAGGAGATCTGCC
 GCC**CGGATCGCC**

ATGGAGAGAGAACCAGAAAAATGGAGAACCTGCTGAAATTAAGATCATCAAGGAAGCATACGAGAAGGCCT
 TTATGTTTTGTTAATAAAGGACTGAACACGACGAGTTAGGGCAGAAGGAAGAAGCAAAGAACTATTACAA
 GCAAGGAATAGGACACCTGCTTAGGGGCATCAGCATCGCGGCTGCAGAGCCGGGGCACACAGGCCCTGCG
 TGGGAGGCTGCCAGGCAGATGCAACAGAAAAATGAAGAAACGCTTCAGAACGTCCGCACCAGGCTAGAGA
 TCCTGGAGAAGGGCCTTGCCACTTCTCTACGGAATGACCTTCAGGATGTGCCAAGCTATACCCAGAGTT
 CCCGCCTAAAGACGCGTGAAGAAGTCCCAGAGCAGGAGTCCGTTAGTACAGCGCCCCAGCGTGTGAA
 GTCGATGGGAGCGCTCAGCCGCGTGTCCGGCCCAAGTGGTGCCTTCTGCTCTGCCGTACCATCGC
 CCAGCTGCCCTGCCAAGCGCCACCAGCCTACAGCCACAGGCTGCTGAGGGCCACTACACTGTTTCCTA
 TGGAACAGATTCCGGGGAGTTTTTCATCCGTGGGAGAAGACTTCTACAGGAACCGTCCCAGCCGCCCT
 CTTGAGACCTTGGGGCTCGATGCAGATGAGTTGATCTTGATACCAAACGGAGTGCAGATCTTTTTGTAA
 ACCCTGCGGGAGAGGTCAGTGCTCCCTCGTACCCTGGGTATCTGCGGATCGTGCGGTTCTTGGAATTC
 TCTGGATACAGTTCTGAACCGCCCTCCTGGGTTTCTCCAGGTGTGTGACTGGTTATACCCTCTAGTTCT
 GATAGGTCACCAGTTCTGAAGTGCAGTGTGGGAGCCTACATGTTCCAGATACCATGTTACAAGCTGCTG
 GGTGCTTCGTAGGGGTTGTTCTTTCATCTGAGCTCCCAGAAGATGACAGAGAGCTGTTTGAGGATCTGTT
 GAGACAGATGTCTGACCTTCGGCTCCAGGCAACTGGAATAGAGAAGAAGATGAATTCCAAATCCCTGGG
 AGATCAAGTCACCCCTCTGAACCACCGAAGGAAGCTTCTGGCACTGATGTCAGGCAGTCAAGTTCTTCAG
 GTTCTCAATAGACCAAGCAGCAAGGATGCCCGCCATAAAGGAAAGCGTGGGAAAAAGACCAAAGATT
 AAGTGAAGAAGTTAATCTGAGCCAGATTGTGCCCTGTGAGCCGAGTTCAGAAGAAAAATCGAAAGAATTG
 CCTGAATGGAGCGAGAAAGTGGCCACAAACATCCTGTCAGGTGCTTCTGGGTGAGCTGGGTTTGTCA
 AAGGTGCTGAATTTACTGGCAAAGCAATTCAGAAAGGTGCTTCTAAACTCAGAGAGCGCATTTCAGCCGGA
 GGAAAAGCCAGTGGAGGTGAGCCAGCTGTACCAGGGGTCTCTACATAGCGAAGCAGGCAACCGGAGGA
 GCAGCCAAAGTCAGCCAGCTCCTGGTTGACGGCGTCTGCACAGTAGCGAATTGTGTTGGTAAAGAACTTG
 CTCACACGTCAAGAAGCACGGAAGCAAACCTGGTTCGGGAATCCCTGAAGAGGGACAAAGACGGGAAATC
 TGCCCTGGATGGCGCCATGGTCGTGGCAGCGAGTAGTGTCAAGGATTCTCAACTGTCTGCAAGGGTTG
 GAATGTGCAGCTAAATGCATCGTTAACAACGTGTCTGCAGAACTGTACAGACTGTGAGATACAAGTATG
 GGCACAACGCAGGAGAAGCTACACATAACGCAGTGGATTGAGCTATCAATGTTGGGCTCACTGCCTACAA
 TATTGACAACATCGGCATCAAAGCCATGGTGAAGAAAACCTGCCAAGCAGACGGGACACACTCTCCTCGAG
 GACTACCAGATCGTTGAGCGCCCTCAGAGGGAGAGTCAGGGAGGACCACAAGCACAGAAGGGAGAAGAG
 ACATAGGAAAGCAGGTGGAGGAAGAGAGCCAGGGGCAGGAAAGAAGGACAAA

AG**CGGACCG**ACGCGTACGCGGCCGCTCGAG - GFP Tag - GTTTAA

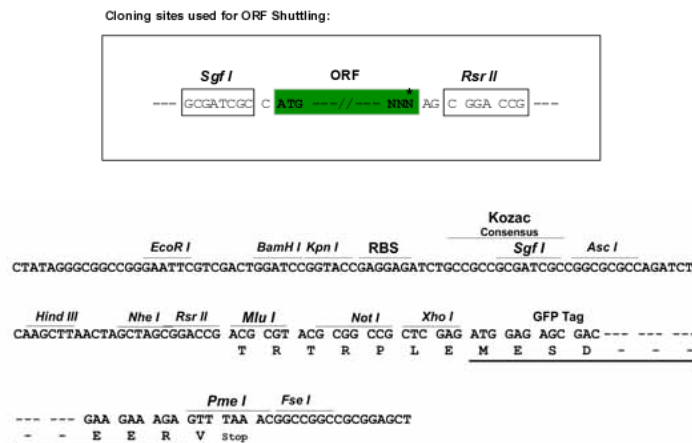
Protein Sequence: >MG209926 representing NM_144895
Red=Cloning site Green=Tags(s)

```
MEREPENGEPAEIKIIEKAYEKAFMFVNKGLNTDELGQKEEAKNYYKQGIGHLLRGISIAAAEPGHTGPA
WEAARQMQQMKETLQNVTRLEILEKGLATSLRNDLQDVPKLYPEFPPKDACKKSPEQESVSTAPQRAE
VDGSASAACAGPSGAPSALPVPSPSCPAEAPPAYSPQAAEGHYTVSYGTDSGEFSSVGEDFYRNRSQPPP
LETLGLDADELILIPNGVQIFFVNPAGEVSAPSYPGYLRIVRFLDNSLDTVLNRPPGFLQVCDWLYPLVP
DRSPVLKCTVGAYMFPDTMLQAAGCFVGVVLSSELPEDDRELFEDLLRQMSDLRLQANWNREEDEFQIPG
RSSHPSEPPKEASGTDVRQSSSSGSSIDQGSKDARHKGKRGKTKDSSEEVNLSQLVPCPSSEEKSKEL
PEWSEKVAHNILSGASWVSWGLVKGAFTGKAIQK GASKLRERIQPEEKPVEVSPAVTRGLYIAKQATGG
AAKVSQLLVDGCVTANCVGKELAPHVKKHGSGLVPESLKRDKDGK SALDGAMVVAASSVQGFSTVWQGL
ECAAKCIVNNSAETVQTVRYKYGHNAGEATHNAVDSAINVGLTAYNIDNIGIKAMVKKAKQTGHTLLE
DYQIVERPQRESQGGATSTEGRRDIGKQVEEEKPGAGKKDK
```

SGPTRRRLE - GFP Tag - V

Restriction Sites: SgfI-RsrII

Cloning Scheme:



ACCN: NM_144895

ORF Size: 2013 bp

OTI Disclaimer: The molecular sequence of this clone aligns with the gene accession number as a point of reference only. However, individual transcript sequences of the same gene can differ through naturally occurring variations (e.g. polymorphisms), each with its own valid existence. This clone is substantially in agreement with the reference, but a complete review of all prevailing variants is recommended prior to use. [More info](#)

OTI Annotation: This clone was engineered to express the complete ORF with an expression tag. Expression varies depending on the nature of the gene.

Components: The ORF clone is ion-exchange column purified and shipped in a 2D barcoded Matrix tube containing 10ug of transfection-ready, dried plasmid DNA (reconstitute with 100 ul of water).

Reconstitution Method:

1. Centrifuge at 5,000xg for 5min.
2. Carefully open the tube and add 100ul of sterile water to dissolve the DNA.
3. Close the tube and incubate for 10 minutes at room temperature.
4. Briefly vortex the tube and then do a quick spin (less than 5000xg) to concentrate the liquid at the bottom.
5. Store the suspended plasmid at -20°C. The DNA is stable for at least one year from date of shipping when stored at -20°C.

RefSeq: [NM_144895.2](#), [NP_659144.1](#)

RefSeq Size: 3797 bp

RefSeq ORF: 2016 bp

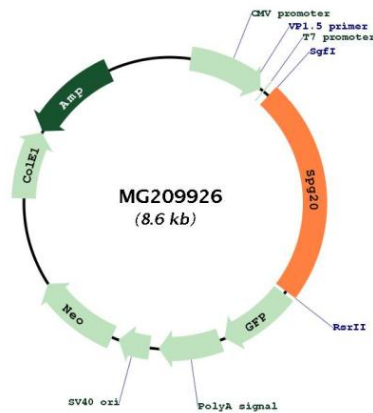
Locus ID: 229285

UniProt ID: [Q8R1X6](#)

Cytogenetics: 3 C

Gene Summary: May be implicated in endosomal trafficking, or microtubule dynamics, or both. Participates in cytokinesis.[UniProtKB/Swiss-Prot Function]

Product images:



Circular map for MG209926