

Product datasheet for **MG209913**

Mtmr1 (NM_016985) Mouse Tagged ORF Clone

Product data:

Product Type:	Expression Plasmids
Product Name:	Mtmr1 (NM_016985) Mouse Tagged ORF Clone
Tag:	TurboGFP
Symbol:	Mtmr1
Synonyms:	AW049210
Mammalian Cell Selection:	Neomycin
Vector:	pCMV6-AC-GFP (PS100010)
E. coli Selection:	Ampicillin (100 ug/mL)



[View online »](#)

ORF Nucleotide
Sequence:

>MG209913 representing NM_016985
Red=Cloning site Blue=ORF Green=Tags(s)

TTTTGTAATACGACTCACTATAGGGCGGCCGGGAATTCGTGCGACTGGATCCGGTACCGAGGAGATCTGCC
GCCCGCATCGCC

ATGGACAGGCCAGTGGCGGGCGGCCGCCGCATCTGCGGCGAGCTGCGAGGGCGCTGGGGGCCCGGGC
CAGGGCCGGGCGCTAGCTGGAGACCCTCTCGGGTTGCGGGGGCGCCCTCGGCCAGCTCCCGCACCCAG
CATTGAGACCCTTGACAGTCCTACAGGGTCACATGTTGAATGGTGTAAACAGCTTATAGCTGCTACAATT
TCTAGTCAGATTTAGGTTTCACTGACATCAGAAAATGTGTCAAGAGATTACAAGGCTCTAAGGGATGGAA
ATAAACTGGCACAGATGGAAGAAGCTCCACTTTCCAGGAGAATCAATTAAGGCCATTGTGAAAGACGT
CATTTATATCTGTCCATTTATGGGAGCAGTGAGTGGGACCCTGACAGTGACGGACTTTAAAATGTACTTC
AAAAATGTAGAAAGGGACCCACATTTTCCTTGTGATGTTCTTGGAGTGATCAGCAGAGTGGAGAAGA
TTGGTGACAGAGCCATGGGATAATTCTTGTGGTATAGAGATTGTGTGCAAGGATATGAGGAACCTGAG
ACTTGCAATATAAGCAGGAAGAAGCAGCGAAAACCTGGGATATTTGAAAACCTCAACAAGCATGCTTTTCCT
CTTCCAATGGGACGGTGTATTTGCATTCAACTATAAAGAAAAGTTTCCAGTTAATGGCTGGAAAAGTTT
ATGATCCAGTGTCTGAATATAAGAGACAGGGCTTGCCAAATGAGAGTTGAAAAATATCAAAAATAACAG
TAATTATGAGTTCTGTGATACCTATCCTGCCATCATTGTTGTGCCAACTAGTGTGAAAGATGATGACCTT
TCAAAAGTGGCAGCCTTTCGAGCGAAAGGCAGAGTCCCTGTGTTGTATGGATTACCCAGAAAAGTCAGG
CAACAATTACACGTTGCAGCCAGCCATTAGTGGTCCCAATGATAAACCGTGCAAAAGAAGATGAGAAATA
CCTGCAGACAATAATGGATGCTAATGCACAGTCACATAAACTTACTATCTTTGATGCCAGACAAAACAGC
GTTGCTGATACCAACAAGGCAAAGGGTGGTGGATATGAAAATGAAAGTGCTTACCCTAATGCCGAACTCA
TATTCTTGGAGATCCACAATATTCATGTGATGAGGGAGTCACTTCGTAATTAAGGAGATTGTGTATCC
TTCAATTGATGAGTCACATTGGCTATCCAATGTGGATGGGACACATTGGCTGGAATATATACGGGTTCTC
CTTGCTGGGGCAGTGAGAATTGCTGATAAAATAGAATCTGGGAAAACCTCCGTGGTCATCCACTGCAGTG
ATGGGTGGGATCGAACATCCAGCTCACATCTCTGGCAATGCTGATGTTAGACAGTTATTACCGACCAT
TAAAGGATTTGAGGCTCTCATAGAAAAGGAGTGGATAAGCTTTGGACACAGGTTTGCCTGAGAGTGGGC
CATGGTGATGACAACCATGCAGATGCTGACCGATCACCTATATTTCTCAGTTTATTGATTGTGTTTGGC
AGATGACAAGACAGTTCCTTCAGCATTGAGTTTAAATGAATTATTCTTGATTACAATTTTGGATCACCT
CTATAGTTGCTTTTTGGGACCTTTTTGTGCAACTGTGAACAACAGCGAATCAAAGAGGATGTATATACA
AATACTATATCTTTATGGTCTTATCAATAGCCAACCTAGATGAATTCTCAAATCCCTTCTTTGTGAATT
ATGAGAACCATGTGTTATATCCTGTTGCTAGTATGAGTCACTTGGAAATTGTGGTAAATTATTATGTACG
GTGGAATCCACGGATGAGACCACAGATGCCAATTCATCAGAATCTCAAGGAACTGCTGGCTATCAAGGCT
GAGCTGCAGAAGCGTGTGGAGGACTTGCAGCGGGAGATGGCCACCCGGACCATCTCATCTTCTCTGAGA
GGGCTCCTCACCTACCACTCAGTACTCCTGTACACACCTCAGTC

ACGCGTACGCGGGCCGCTCGAG - GFP Tag - GTTTAA

Protein Sequence: >MG209913 representing NM_016985
 Red=Cloning site Green=Tags(s)

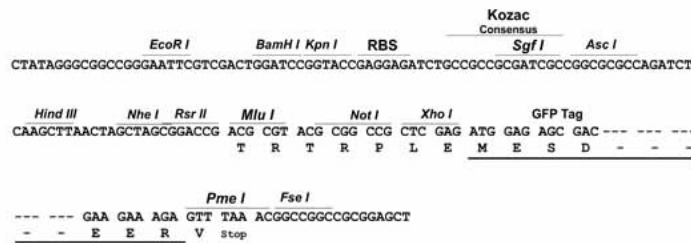
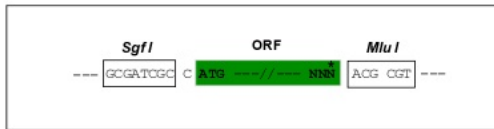
MDRPVAAAAAASAAASCEGAGGPGPGASWRPSRVAGGASASSRHPSIETLDSPTGSHVEWCKQLAATI
 SSQISGSVTSENVSRDYKALRDGNKLAQMEEAPLFPGESIKAIVKDVIYICPFMGAVSGTLTVDFKMYF
 KNVERDPHFVLDVPLGVI SRVEKIGAQSHGDNSCGIEIVCKDMRNLRLAYKQEEQRKLGIFENLNKHAFP
 L SNGQVLF AFNYKEKFPVNGWKVYDVPVSEYKRQGLPNESWKISKINSNYEFCDTYPAIIIVVPTS VKDDDL
 SKVA AFR AKGRV PLSWIHPESQATITRCSQPLVGPNDKRCKEDEKYLQTIMDANAQSHKLTIFDARQNS
 VADTNKAKGGGYENESAYPNAELIFLEIHNHVMRESLRKLKEIVYPSIDESHWLSNVDGTHWLEYIRVL
 LAGAVRIADKIESGKTSVVIHCSGDGWDRTSQLTSLAMLMLDSYIRTIKGFEALIEKEWISFGHRFALRVG
 HGDDNHADADRSPIFLQFIDCVWQMRQFP S AFEFNEFLITILDHLYSCLFGTFLCNCEQQRKEDVYT
 NTISLSWYINSQLDEF SNPFFVNYENHVLVPVASM SHLELWVNYVVRWNP RMRPQMPIHQNLKELLAIKA
 ELQKRVEDLQREMATRTISSSSERGS SPTHSATPVHTSV

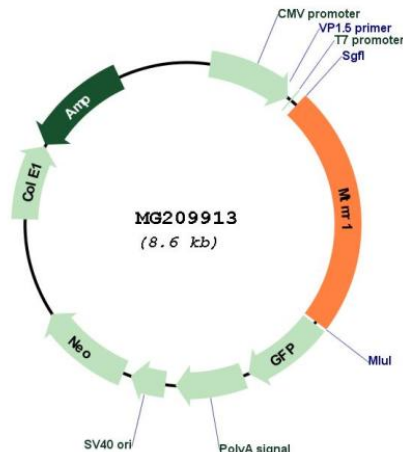
TRTRPLE - GFP Tag - V

Restriction Sites: SgfI-MluI

Cloning Scheme:

Cloning sites used for ORF Shuttling:



Plasmid Map:


ACCN: NM_016985

ORF Size: 2007 bp

OTI Disclaimer: The molecular sequence of this clone aligns with the gene accession number as a point of reference only. However, individual transcript sequences of the same gene can differ through naturally occurring variations (e.g. polymorphisms), each with its own valid existence. This clone is substantially in agreement with the reference, but a complete review of all prevailing variants is recommended prior to use. [More info](#)

OTI Annotation: This clone was engineered to express the complete ORF with an expression tag. Expression varies depending on the nature of the gene.

Components: The ORF clone is ion-exchange column purified and shipped in a 2D barcoded Matrix tube containing 10ug of transfection-ready, dried plasmid DNA (reconstitute with 100 ul of water).

Reconstitution Method:

1. Centrifuge at 5,000xg for 5min.
2. Carefully open the tube and add 100ul of sterile water to dissolve the DNA.
3. Close the tube and incubate for 10 minutes at room temperature.
4. Briefly vortex the tube and then do a quick spin (less than 5000xg) to concentrate the liquid at the bottom.
5. Store the suspended plasmid at -20°C. The DNA is stable for at least one year from date of shipping when stored at -20°C.

RefSeq: [NM_016985.2](#), [NP_058681.1](#)

RefSeq Size: 4652 bp

RefSeq ORF: 2010 bp

Locus ID: 53332

UniProt ID: [Q9Z2C4](#)

Cytogenetics: X A7.3

Gene Summary: Lipid phosphatase that has high specificity for phosphatidylinositol 3-phosphate and has no activity with phosphatidylinositol 4-phosphate, phosphatidylinositol (4,5)-bisphosphate and phosphatidylinositol (3,4,5)-trisphosphate (PubMed:12217958). Activity with phosphatidylinositol (3,5)-bisphosphate is controversial; it has been shown for the human ortholog (By similarity). In contrast, PubMed:12217958 find no activity with this substrate. [UniProtKB/Swiss-Prot Function]