

Product datasheet for **MG209911**

Daglb (NM_144915) Mouse Tagged ORF Clone

Product data:

Product Type:	Expression Plasmids
Product Name:	Daglb (NM_144915) Mouse Tagged ORF Clone
Tag:	TurboGFP
Symbol:	Daglb
Synonyms:	E330036I19Rik
Mammalian Cell Selection:	Neomycin
Vector:	pCMV6-AC-GFP (PS100010)
E. coli Selection:	Ampicillin (100 ug/mL)



[View online »](#)

ORF Nucleotide
Sequence:

>MG209911 representing NM_144915
Red=Cloning site Blue=ORF Green=Tags(s)

TTTTGTAATACGACTCACTATAGGGCGGCCGGAATTCGTCGACTGGATCCGGTACCGAGGAGATCTGCC
GCCCGGATCGCC

ATGCCGGGATGGTGCTGTTTCGGCCGGCGTGGTCTCTAGCCAGCGACGACTTGGTGTTCCCGGGTCTT
TTGAGCTGTTCTGCGTGTGCTGTGGTGGATTGTCAGTCTGACGTTGTATCTCACGCACAGAAGGAGGCT
GGACTGTCCCGGTGGAGTCTTGCTCAGCACGTACCTGATAGTCCTCCTGTTCTCCTGGCAGTTATTATA
TGCACCGTGTGGCCATCGTGTGTGTCAGCATGAGAGGAACCATTTGTAACCCTGGACCTCGAAAGTCTA
TGTCTAAGCTGCTCTATATCCGCTGGCGCTCTTCTGCCAGAGATGGTCTGGGCTTCTCTGGGGCCGC
CTGGGTGGCAAAGGTATCCAGTGTGACAGGACAGTTGTCATTGGCATCATCGCCACCGTCAATTGTCAGC
TGGATTGTCATTGCTGCCACCATGGTACCATCATCTTTGTCTTTGACCCGCTGGCGGGGAAGATGGCTC
CGTATCCCCATGCATCCCGGAGCACCTGGACAGTAACAGCTCAAACCGTTACTGACTGGCCTGAAGAC
GGCTGCGAAGAGCGTGTGGGAGACCCGGTGCAGTTCTGCTGCTGCTGCGTTGGGCAGGATGATAACACC
AGGGTGGCGTTTTCCAGCACTGCCGACCTGTTCTCCACCTACTTCTCTGACACAGACCTGGTGCCTAGTG
ATATCGCAGCAGGCTTCCACCTTCTCCACCAGCAACAAGACAATATCAGCCACAGCCGGGAGCCTCCGGA
GGTCGTGACCCACACACCAGGACAGCCTCAGGAACTGAGTTAGATGCAGAAGTGGAGAAGTCCCATCAT
TACATGCCGTTTGCAGCAGCTGCCTATGGGTGGCCGCTCTACATCTACAGGAACCCGTTACAGGGGCTGT
GCAGGATTGGTGGCGACTGTTGCAGAGCCAGAGACATAGAGTACGATGCAGTGGAAAGGTGACCAGACAA
CTGCCACTTCGCCTCCATCCTGAAGACCACAGGGCTGCAGTACAGGGATTTCAATCACATAAGCTTTCAC
GACAAGGTGTATGAGCTGCCCTTCATAGTGTTCTGGACCACAGGAAGGAGTCTGTTGTGGTCCCGTGA
GAGGGACCATGTCTCCAGGACGTCTGACCGACCTGTCTGCCGAGAGTGAGACCCTGGAGCTGGGGAT
TGAGCTACAGGACTGTGTGGCCACAAGGGAATTGCTCAAGCGGCCAGATACATTCACCGCAGACTGGTC
AATGATGGGATTCTGAGCCAAGCCTTCACTGTCGCTCCGGAGTACCAGCTCGTTCTGGTGGGCACAGCC
TAGGAGCCGGCGCTGCGGCCCTGTAGCCATCATGCTCCGGGGGCTACCCACAAGTCCGTGCTTATGC
CTTCTCCCGCCAGGGGCTGCTCAGCAAATCCCTTTACGAGTACTCCAAGGACTTTGTCGTGTCGCTT
ATCCTAGGGATGGATGTGATCCCAGGTTAAGTGTGACCAACATGGAGGACCTCAAGAGGAGGATCCTGA
GAGTGATCGCTAACTGCAATAAGCCGAAGTACAAGATCTTGTGTCATGGTGTGGTACGGACTGTTCCG
AGGAAGCCCTGATAACTTTCAACTGAACTGGATGAGGGCACCCAGGGGCTGACTCAGCCTCTTCTT
GGAGAGCAGACTTCTAACCCGATACTCCCGGGCTACTGTTCCAGCGACTCCCCTGGACTCCCCCA
CCAAGTACCCACTCTGTACCCACTGGCAGGATCATCCACTGGAAGAGGAGGGTGGTTCAGGGAGGTT
TGCTGCTGTTCTGCTGCCAGTACAGAGCGAGGTGGGCACACGAAGCAGAATTCAGTAAGATCCTGATA
GGCCAAAGATGCTGATTGACCACATGCCTGACGTGATTCGGGCCCTGGACAGAGTCTTGGCCGACA
GGACAGCTGCGTCTCCTGCCAGGGCAAGCGGCTCAAGTGTACCG

ACCGTACGCGGCCGCTCGAG - GFP Tag - GTTAA

Protein Sequence: >MG209911 representing NM_144915
 Red=Cloning site Green=Tags(s)

MPGMVLFGRRWLASDDLVPFSGFELFLRVLWWIVSLTLYLTHRRRLDCPGVLLSTYLIVLLVLLAVII
 CTVLAIVCVSMRGTICNPGPRKSMKLLYIRLALFLPEMVWASLGAAWVAKGIQCDRTVVIGIATVIVS
 WIVIAATMVTIIFVFDPLGGKMAPYPPCIPEHLDSNSSNRLTGLKTAASVWETRVQFCCCCVGQDDNT
 RVAFSSTADLFSTYFSDTDLVPSDIAAGFTLLHQQDNISSSREPPEVVTHTPGQPQETELDAEVENCHH
 YMPFAAAAYGWPLYIYRNPFTGLCRIGGCCRRARDIEYDAVEGDQHCHFASILKTTGLQYRDFIHSFH
 DKVYELPFIVVLDHRKESVVVAVRGTMSLQDVLTDLSAESETLELGIELQDCVAHKGIAQAARYIHRRLV
 NDGILSQAFSVAPEYQLVLVGHSLGAGAAALLAIMLRGAYQVRAAFSPRGLLSKSLYEYSKDFVVS
 ILGMDVIPRLSVTNMEDLKRRILRVIANCNPKPKYKILLHGCWYGLFGGSPDNFTELDEGTQGALQPLL
 GEQTLTRYSPGYCSDSPLDSPTKYPTLYPPGRIIHLEEEGGSGRFGCCSAAQYRARWAHEAEFSKILI
 GPKMLIDHMPDVMIRALDRVLADRTACVSCPGQGGSSVP

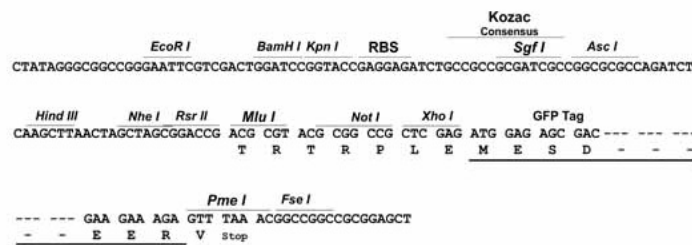
TRTRPLE - GFP Tag - V

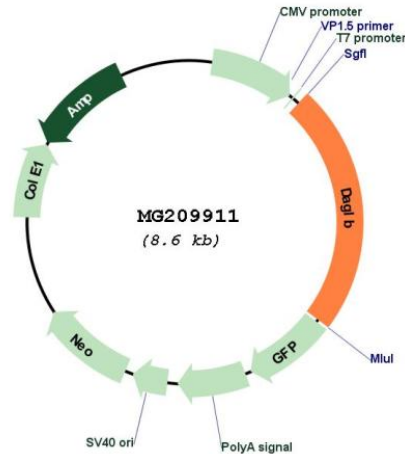
Restriction Sites:

Sgfl-MluI

Cloning Scheme:

Cloning sites used for ORF Shuttling:



Plasmid Map:


ACCN: NM_144915

ORF Size: 2007 bp

OTI Disclaimer: The molecular sequence of this clone aligns with the gene accession number as a point of reference only. However, individual transcript sequences of the same gene can differ through naturally occurring variations (e.g. polymorphisms), each with its own valid existence. This clone is substantially in agreement with the reference, but a complete review of all prevailing variants is recommended prior to use. [More info](#)

OTI Annotation: This clone was engineered to express the complete ORF with an expression tag. Expression varies depending on the nature of the gene.

Components: The ORF clone is ion-exchange column purified and shipped in a 2D barcoded Matrix tube containing 10ug of transfection-ready, dried plasmid DNA (reconstitute with 100 ul of water).

Reconstitution Method:

1. Centrifuge at 5,000xg for 5min.
2. Carefully open the tube and add 100ul of sterile water to dissolve the DNA.
3. Close the tube and incubate for 10 minutes at room temperature.
4. Briefly vortex the tube and then do a quick spin (less than 5000xg) to concentrate the liquid at the bottom.
5. Store the suspended plasmid at -20°C. The DNA is stable for at least one year from date of shipping when stored at -20°C.

RefSeq: [NM_144915.3](#), [NP_659164.2](#)

RefSeq Size: 3257 bp

RefSeq ORF: 2010 bp

Locus ID: 231871

UniProt ID: [Q91WC9](#)

Cytogenetics: 5 G2

Gene Summary: Catalyzes the hydrolysis of diacylglycerol (DAG) to 2-arachidonoyl-glycerol (2-AG), the most abundant endocannabinoid in tissues. Required for axonal growth during development and for retrograde synaptic signaling at mature synapses (By similarity).[UniProtKB/Swiss-Prot Function]